

KEY WEST, FLORIDA

COPTER TACAN W RWY 4

TACAN NOX Chan 78	APCH CRS 044°	Fix/Idg TDZE Arpt Elev	7001 4 6
----------------------	------------------	------------------------------	----------------

AL-21.4 (USN)

KEY WEST NAS (BOCA CHICA FLD) (KNQX)

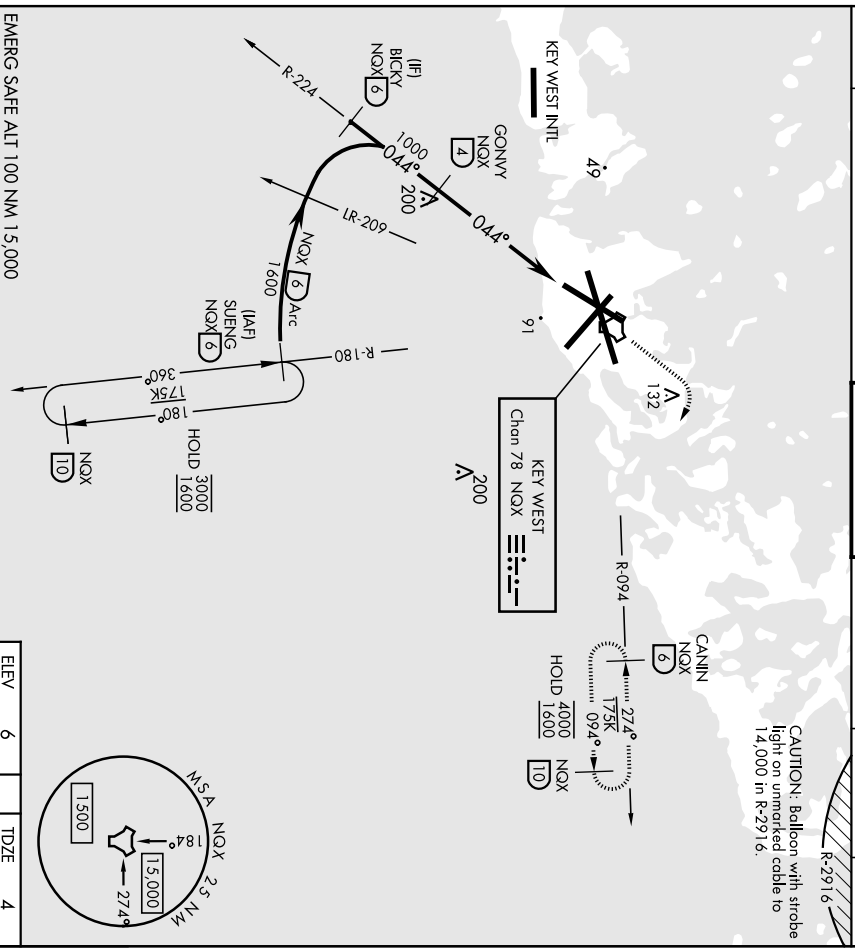
RADAR required

MISSED APPROACH: Climb to 1600 via NOX TACAN R-224 to NOX, then via NOX R-094 to CANIN and hold

ATIS ★ 307.025	NAVY KEY WEST APP CON 124.025 313.7	NAVY KEY WEST TOWER ★ 118.575 361.25
-------------------	--	---

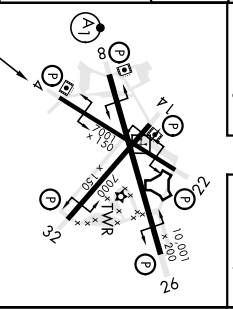
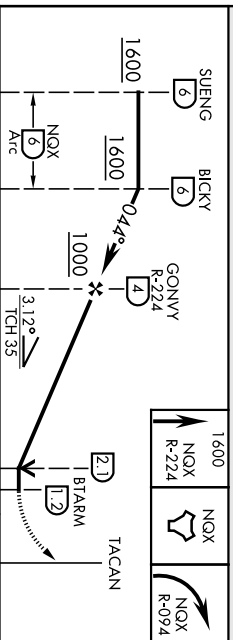
GND CON 121.7 336.45	CINC DEL 121.2 357.4	ASR/PAR
-------------------------	-------------------------	---------

CAUTION: Balloon with strobe light on unmarked cable to 14,000 in R-291.6



EMERG SAFE ALT 100 NM 15,000

CATEGORY	S-4	360-1	356	COPTER	(400-1)	ELEV	6	TDZE	4
⑨ CIRCLING		440-1	434		(500-1)				



KEY WEST, FLORIDA
Amdt 2 23FEB23

KEY WEST NAS (BOCA CHICA FLD) (KNQX)
COPTER TACAN W RWY 4

HI-TACAN W RWY 8

VORTAC EYW 113.5 Chon 82	APCH CRS 098°	Rwy Idg 10,001	TDZE 4	Appr Elev 6
--------------------------------	------------------	-------------------	-----------	----------------

AL-21.4 [USN]

KEY WEST NAS [BOCA CHICA FLD] (KNQX)

RADAR required ▼	ALSF-1 A1
---------------------	--------------

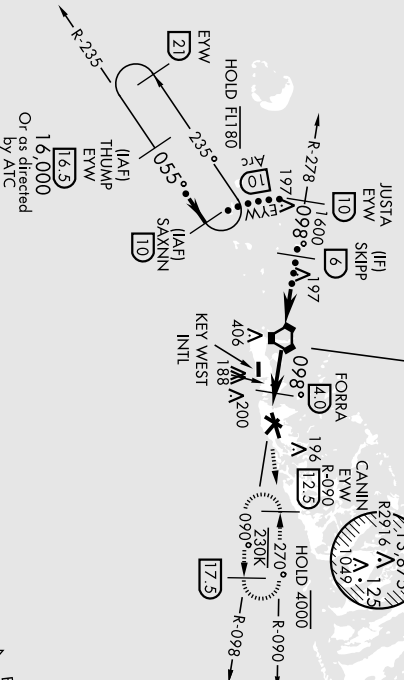
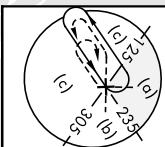
MISSED APPROACH: Climbing left turn to 1600 Intercept EYW VORTAC R-090 to CANIN and hold.

ATIS ★ 307.025	NAVY KEY WEST APP CON 124.025 313.7	NAVY KEY WEST TOWER ★ 118.575 340.25	GND CON 121.7 336.45	CINC DEL 121.2 357.4	ASR/PAR
-------------------	--	---	-------------------------	-------------------------	---------

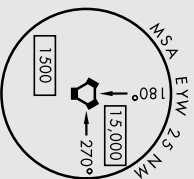
CAUTION: Excessive descent gradients multiple segments

KEY WEST
113.5 EYW
Chon 82

CAUTION: Balloon with strobe light on unmarked cable to 14,000 In R-2916.



EMERG SAFE ALT 100 NM 15,000



THUMP 16.5	SAXNN R-235	T or as directed by ATC	CANIN EYW 12.5	ELEV 6	TDZE 4		
	JUSTA R-278			1600 EYW R-090			
3.11° TCH 44	Aic 10	Aic 10	SKIPP 6	VORTAC 40	FORRA 40	ECIPA 5.5	HIRL all rwys
+5600		+098°		+098°			
1600		1600		560			
4.8 NM		1.5 NM					
CATEGORY	C	D	E				
S-8	440-1½	436 (500-1¼)	554 (600-2)				
◻ CIRCLING	500-1½ 494 (500-1¼)	560-2	554 (600-2)				

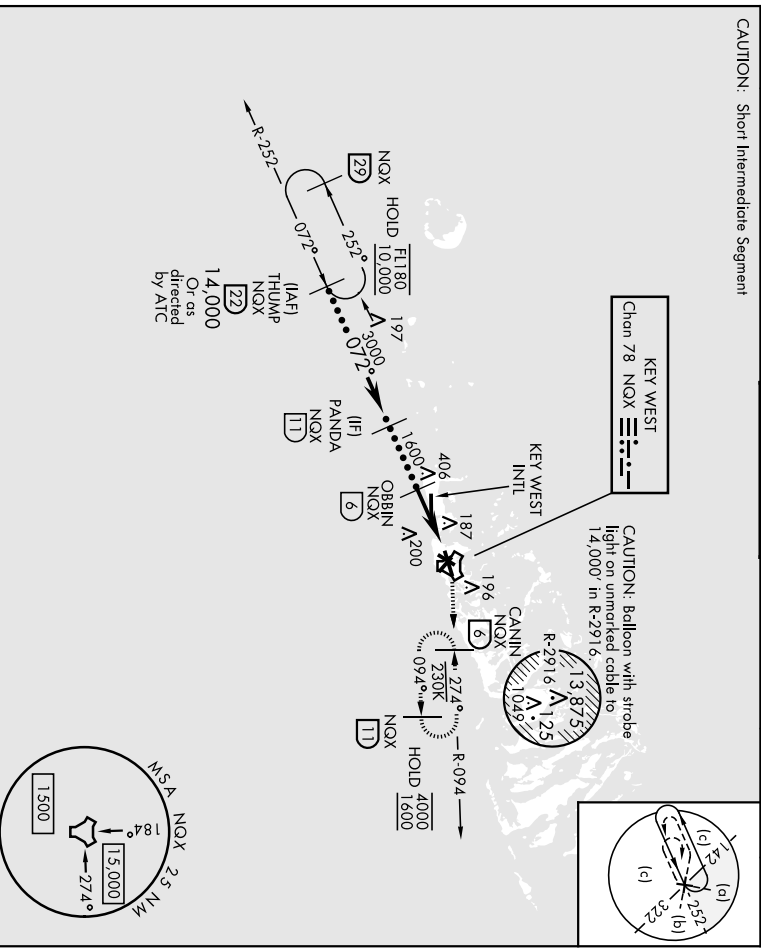
KEY WEST, FLORIDA
Amdt 4 23FEB23

24°34'N-81°41'W KEY WEST NAS [BOCA CHICA FLD] (KNQX)

HI-TACAN W RWY 8

TACAN NOX Chon 78	APCH CRS 072°	Fix/Idg 10,001	TDZE 4	Aspl Elev 6
RADAR required * When ALS inop, increase vis to 1 1/2 miles.				
ATIS * 307.025	NAVY KEY WEST APP CON 124.025 313.7		MISSED APPROACH: Climb to 1600 via R-252 to NOX TACAN then via R-094 to CANNIN (NOX R-094/6 DME) and hold.	

ALS-F-1 	NAVY KEY WEST TOWER * 118.575 340.25	GND CON 121.7 336.45	CINC DEL 121.2 357.4	ASR/PAR
CAUTION: Short Intermediate Segment				

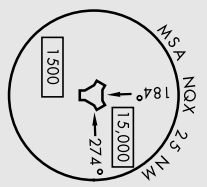
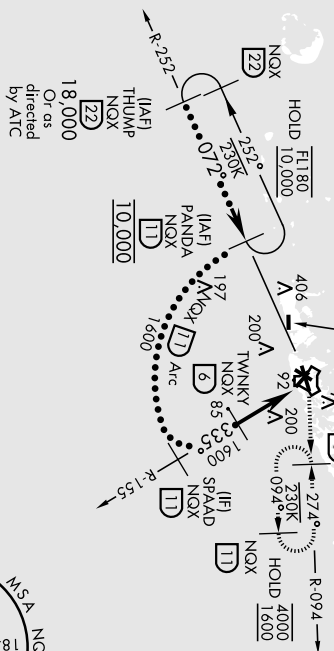
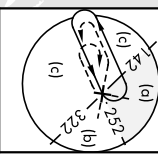


EMERG SAFE ALT 100 NMA 15,000

CATEGORY		C	D	E	HI-TACAN X RWY 8
S-8 *		440-3/4	436	(500-3/4)	
ⓐ CIRCILING		500-1 1/2 494 (500-1 1/2)	560-2	554 (600-2)	
KEY WEST, FLORIDA Amdt 4 23FEB23 24°34'N-81°41'W KEY WEST NAS (BOCA CHICA FID) (KNOX) HRLd all rwy's					

HI-TACAN Z RWY 32

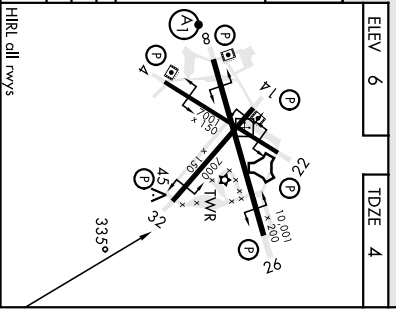
KEY WEST, FLORIDA	TACAN NQX Chon 78	APCH CRS 335°	Req'd Idg TDZE Appl Elev	7000 4 6	AI-21.4 [USN]	KEY WEST NAS [BOCA CHICA FLD] (KNQX)
RADAR required				MISSED APPROACH: Climb to 1600 via NQX TACAN R-155 to NQX, then climbing right turn to CANNIN and hold.		
ATIS *	NAVY KEY WEST APP CON 307.025	NAVY KEY WEST TOWER *	124.025 313.7	GND CON	118.575 340.25	CINC DEL
CAUTION: Short Intermediate Segment				ASR/PAR	121.7 336.45	121.2 357.4



EMERG SAFE ALT 100 NM 15,000

THUMP R-252 (22)	PANDA R-252 (11)	SPAAD R-155 (11)	TWNKY (6)	JATAL (3)	NOX (5)	TACAN (5)
18,000	10,000	1600	1600	1600	1600	1600
Or as directed by ATC	Or as directed by ATC	Or as directed by ATC	Or as directed by ATC	Or as directed by ATC	Or as directed by ATC	Or as directed by ATC
Arc	Arc	Arc	Arc	Arc	Arc	Arc
10.72°	33.5°	33.5°	2.99°	2.99°	2.99°	2.99°
1600	1600	1600	720	720	720	720
1.5 NM	1.5 NM	1.5 NM	1.5 NM	1.5 NM	1.5 NM	1.5 NM

CATEGORY	C	D	E
S-32	500-1 1/2	360-1	36
QIRCLING	494 (500-1 1/2)	560-2	54 (600-2)



KEY WEST, FLORIDA
Amdt 4 23FEB23
24°34'N-81°41'W KEY WEST NAS (BOCA CHICA FLD) (KNQX)
HI-TACAN Z RWY 32

HI-TACAN Z RWY 4

TACAN NQX Chan 78	APCH CRS 044°	Req'd Idg TDZE App'l Elev	7001 4 6
----------------------	------------------	---------------------------------	----------------

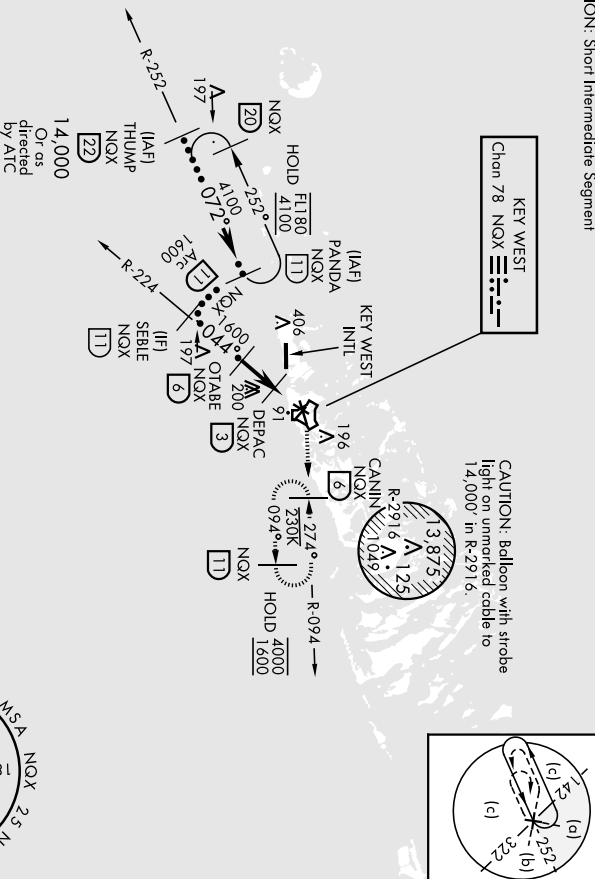
AL-21.4 (USN)

KEY WEST NAS (BOCA CHICA FLD) (KNQX)

RADAR required		MISSED APPROACH: Climb to 1600 via NQX TACAN R-224 to NQX then via NQX R-094 to CANNIN and hold.	
----------------	--	--	--

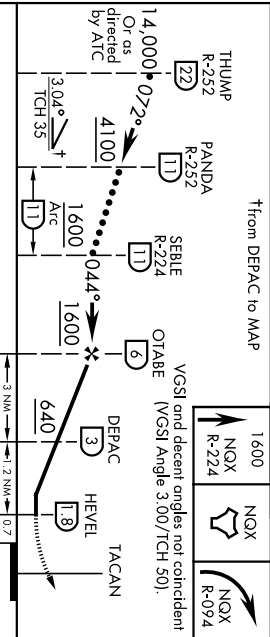
ATIS ★ 307.025	NAVY KEY WEST APP CON 124.025 313.7	NAVY KEY WEST TOWER ★ 118.575 340.25	GND CON 121.7 336.45	CINC DEL 121.2 357.4	ASR/PAR
-------------------	--	---	-------------------------	-------------------------	---------

CAUTION: Short Intermediate Segment

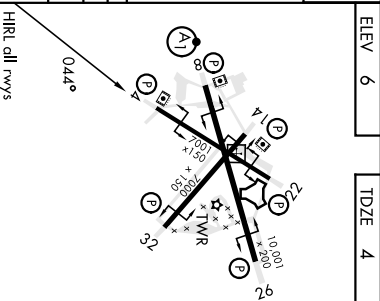


EMERG SAFE ALT 100 NM 15,000

†from DEPAC to MAP



CATEGORY	C	D	E
S-4	360-1	356 (400-1)	
☑ CIRCLING	500-1½ 494 (500-1½)	560-2	554 (600-2)



KEY WEST, FLORIDA
 24°34'N-81°41'W KEY WEST NAS (BOCA CHICA FLD) (KNQX)
 Arr'd 4 23FEB23

HI-TACAN Z RWY 4

KEY WEST, FLORIDA

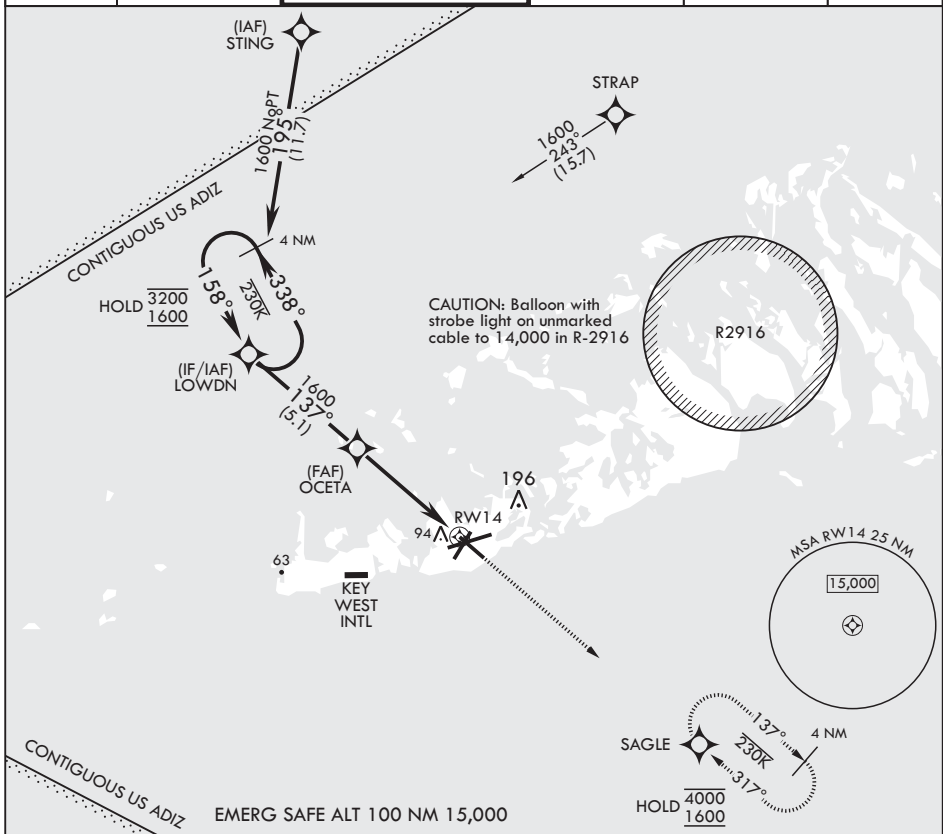
RNAV (GPS) RWY 14

APCH CRS	Rwy Idg	7000
137°	TDZE	4
	Arprt Elev	6

AL-214 (USN) KEY WEST NAS (BOCA CHICA FLD) (KNQX)

RNP APCH MISSED APPROACH: Climb to 1600 direct SAGLE and hold.

ATIS*	APP CON	NAVY KEY WEST TOWER*	GND CON	CLNC DEL	ASR/PAR
307.025	124.025 313.7	118.575 340.25	121.7 336.45	121.2 357.4	



	1600	SAGLE	ELEV 6	TDZE 4
--	------	-------	--------	--------

CATEGORY	A	B	C	D
LNAV MDA	380-1	376	(400-1)	
☑ CIRCLING	440-1 434 (500-1)	500-1 494 (500-1)	500-1½ 494 (500-1½)	560-2 554 (600-2)

HIRL all Rwys

KEY WEST, FLORIDA

24°34'N - 81°41'W

KEY WEST NAS (BOCA CHICA FLD) (KNQX)

Amdt 2 23FEB23

RNAV (GPS) RWY 14

SE-3, 22 FEB 2024 to 21 MAR 2024

SE-3, 22 FEB 2024 to 21 MAR 2024

KEY WEST, FLORIDA

RNAV (GPS) RWY 26

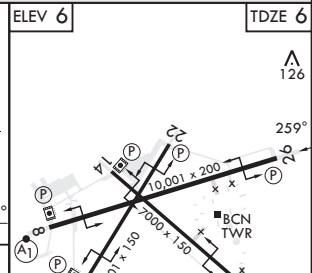
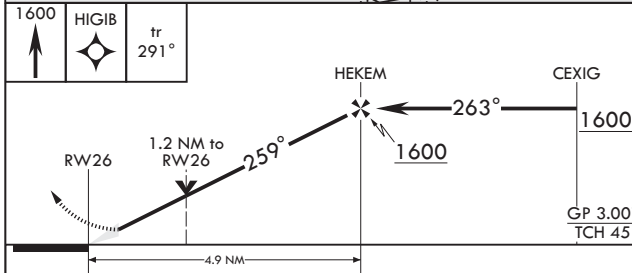
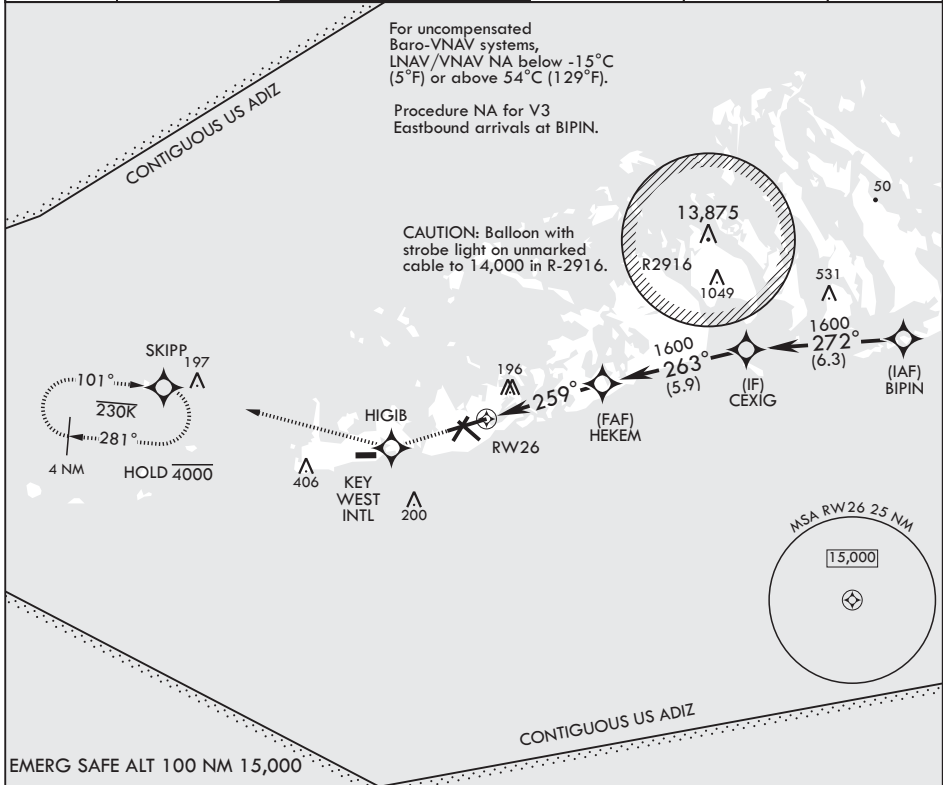
APCH CRS	Rwy Idg	10,001
259°	TDZE	6
	Arprt Elev	6

AL-214 (USN)

KEY WEST NAS (BOCA CHICA FLD) (KNQX)

RNP APCH	MISSED APPROACH: Climb to 1600 direct HIGIB, track 291° to SKIPP and hold.
----------	--

ATIS ★ 307.025	APP CON 124.025 313.7	NAVY KEY WEST TOWER ★ 118.575 340.25	GND CON 121.7 336.45	CLNC DEL 121.2 357.4	ASR/PAR
-------------------	--------------------------	---	-------------------------	-------------------------	---------



CATEGORY	A	B	C	D
LNAV/VNAV DA	291-7/8 285 (300-7/8)	302-7/8 296 (300-7/8)	310-7/8 304 (400-7/8)	321-7/8 315 (400-7/8)
LNAV MDA	420-1 414 (500-1)	500-1 (500-1)	420-1 414 (500-1)	500-1 (500-1)
CIRCLING	440-1 434 (500-1)	500-1 494 (500-1)	500-1 1/2 494 (500-1 1/2)	560-2 554 (600-2)

HIRL all Rwys

KEY WEST, FLORIDA
Amdt 2 23FEB23

24°34'N - 81°41'W

KEY WEST NAS (BOCA CHICA FLD) (KNQX)

RNAV (GPS) RWY 26

SE-3, 22 FEB 2024 to 21 MAR 2024

SE-3, 22 FEB 2024 to 21 MAR 2024

KEY WEST, FLORIDA

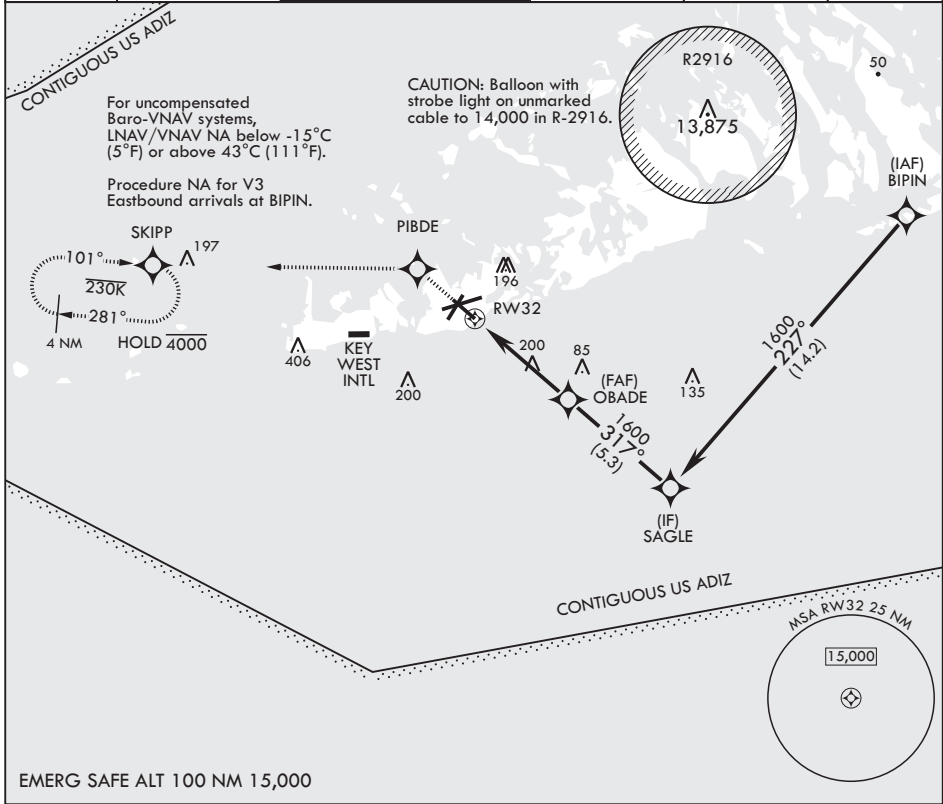
RNAV (GPS) RWY 32

APCH CRS 317°	Rwy Idg TDZE Arprt Elev	7000 4 6
------------------	-------------------------------	----------------

AL-214 (USN) KEY WEST NAS (BOCA CHICA FLD) (KNQX)

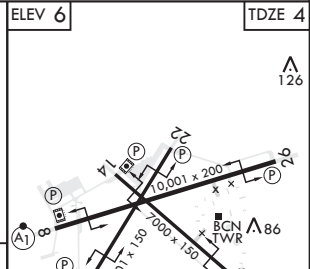
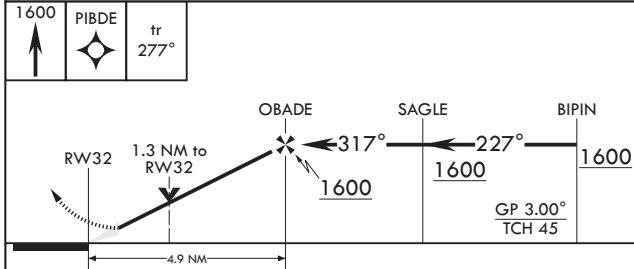
RNP APCH	MISSED APPROACH: (Do not exceed 230 KIAS until PIBDE.) Climb to 1600 direct PIBDE, track 277° to SKIPP and hold, continue climb-in-hold to 1600.
----------	--

ATIS* 307.025	APP CON 124.025 313.7	NAVY KEY WEST TOWER* 118.575 340.25	GND CON 121.7 336.45	CLNC DEL 121.2 357.4	ASR/PAR
------------------	--------------------------	--	-------------------------	-------------------------	---------



SE-3, 22 FEB 2024 to 21 MAR 2024

SE-3, 22 FEB 2024 to 21 MAR 2024



CATEGORY	A	B	C	D
LNAV/VNAV DA	254-¾		250	(300-¾)
LNAV MDA	460-1	456 (500-1)	460-1½	456 (500-1½)
✪ CIRCLING	460-1 454 (500-1)	500-1 494 (500-1)	500-1½ 494 (500-1½)	560-2 554 (600-2)

HIRL all Rwys

KEY WEST, FLORIDA
Amdt 2 23FEB23

24°34'N - 81°41'W

KEY WEST NAS (BOCA CHICA FLD) (KNQX)

RNAV (GPS) RWY 32

KEY WEST, FLORIDA

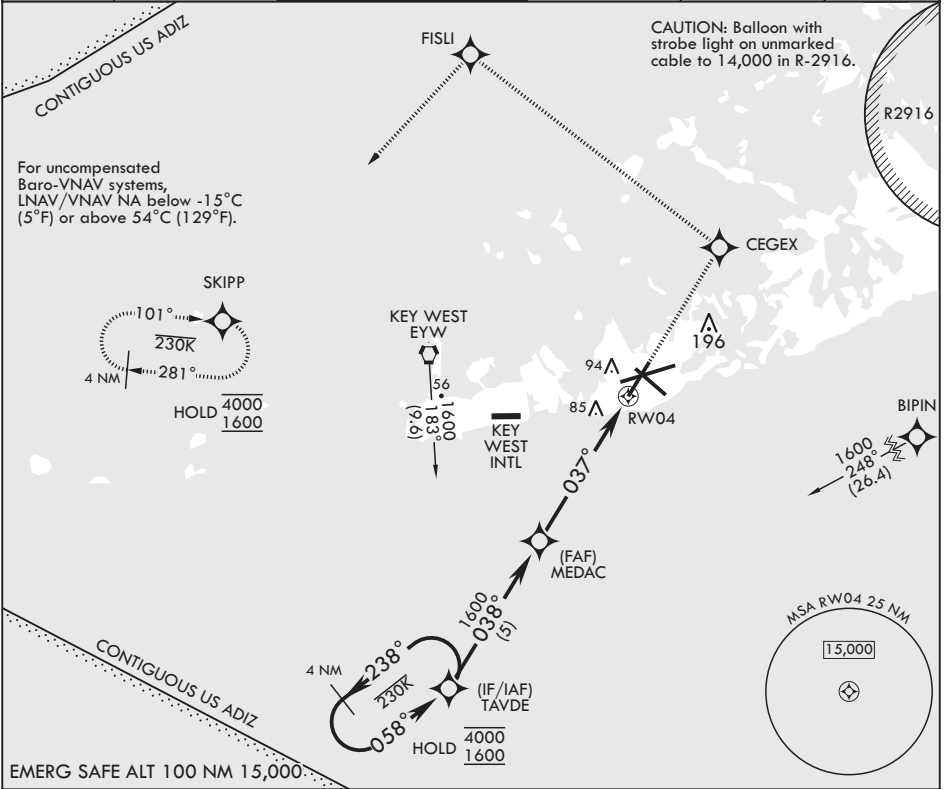
RNAV (GPS) RWY 4

APCH CRS	Rwy Idg	7001
037°	TDZE	4
	Arprt Elev	6

AL-214 (USN) KEY WEST NAS (BOCA CHICA FLD) (KNQX)

RNP APCH	MISSED APPROACH: (Do not exceed 230 KIAS until CEGEX.) Climb to 1600 direct CEGEX, track 314° to FISLI, track 229° to SKIPP and hold.		
RADAR required			

ATIS★ 307.025	APP CON 124.025 313.7	NAVY KEY WEST TOWER★ 118.575 340.25	GND CON 121.7 336.45	CLNC DEL 121.2 357.4	ASR/PAR
------------------	--------------------------	--	-------------------------	-------------------------	---------



VGSi and RNAV glidepath not coincident (VGSi Angle 3.00/TCH 35).					1600	CEGEX	ELEV 6	TDZE 4
4 NM Holding Pattern					4000	← 238°	← 038°	← 058°
GP 3.00°					1600	← 058°	← 038°	← 037°
TCH 45					1.3 NM to RW04			
4.9 NM					RW04			
CATEGORY	A	B	C	D				
LNAV/VNAV DA	245-¾		250	(300-¾)				
LNAV MDA	460-1	456 (500-1)	460-1½	456 (500-1½)				
✪ CIRCLING	460-1	500-1	500-1½	560-2				
	454 (500-1)	494 (500-1)	494 (500-1½)	554 (600-2)				

KEY WEST, FLORIDA 24°34'N - 81°41'W KEY WEST NAS (BOCA CHICA FLD) (KNQX)

Amdt 2 23FEB23

RNAV (GPS) RWY 4

SE-3, 22 FEB 2024 to 21 MAR 2024

SE-3, 22 FEB 2024 to 21 MAR 2024

KEY WEST, FLORIDA

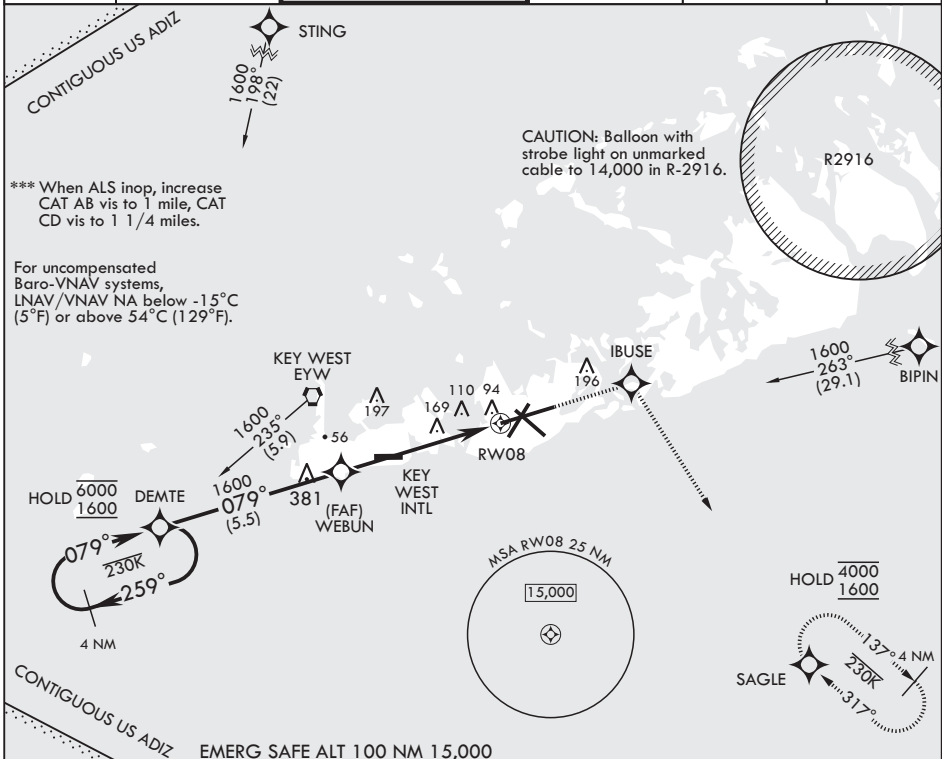
RNAV (GPS) RWY 8

WAAS CH 65107 W08A	APCH CRS 079°	Rwy ldg TDZE 10,001 Arprt Elev 6
--------------------------	------------------	---

AL-214 (USN) KEY WEST NAS (BOCA CHICA FLD) (KNQX)

RNP APCH * When ALS inop, increase vis to 3/4 mile. ** When ALS inop, increase vis to 1 1/4 miles.	ALS-1 	MISSED APPROACH: (Do not exceed 230 KIAS until IBUSE) Climb to 1600 direct IBUSE, track 154° to SAGLE and hold.
--	-----------	---

ATIS* 307.025	APP CON 124.025 313.7	NAVY KEY WEST TOWER* 118.575 340.25	GND CON 121.7 336.45	CLNC DEL 121.2 357.4	ASR/PAR
------------------	--------------------------	--	-------------------------	-------------------------	---------



SE-3, 22 FEB 2024 to 21 MAR 2024

SE-3, 22 FEB 2024 to 21 MAR 2024

4 NM Holding Pattern	1600	IBUSE	tr 154°	ELEV 6'	TDZE 4'
	DEMRTE	WEBUN	1.2 NM to RW08	RW08	
GP 3.00°	6000	1600	4.9 NM		
TCH 45					
CATEGORY	A	B	C	D	
LPV DA*	204-1/2	200	(200-1/2)		
LNAV/VNAV DA**	427-3/4	423	(500-3/4)		
LNAV MDA***	440-1/2 436 (500-1/2)	440-3/4 436 (500-3/4)			
CIRCLING	440-1 434 (500-1)	500-1 494 (500-1)	500-1 1/2 494 (500-1 1/2)	560-2 554 (600-2)	

HIRL all Rwys

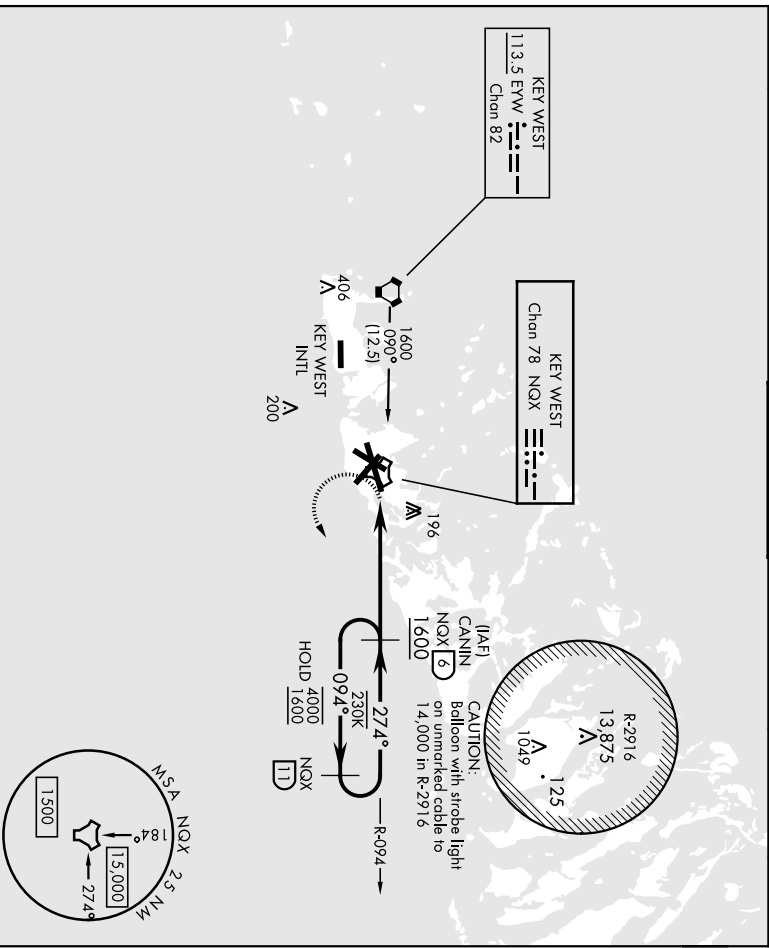
KEY WEST, FLORIDA
Amdt 3 23FEB23

24°34'N - 81°41'W KEY WEST NAS (BOCA CHICA FLD) (KNQX)

RNAV (GPS) RWY 8

TACAN NOX Chan 78	APCH CRS 274°	Fix/Idg TDZE Appt Elev	10 001 6 6	AL-214 (USN)	KEY WEST NAS (BOCA CHICA FLD) (KNQX)
AIS ★ 307.025	NAVY KEY WEST APP CON 124.025 313.7	NAVY KEY WEST TOWER ★ 118.575 340.25	GND CON 121.7 336.45	CINC DEL 121.2 357.4	ASR/PAR

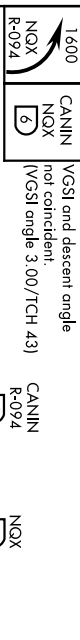
MISSED APPROACH: Climbing left turn to 1600 to intercept NOX R-094 to CANIN (NOX R-094/5 DME) and hold.



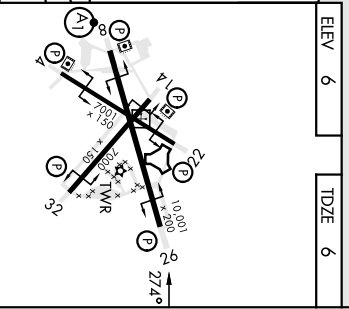
SE-3, 22 FEB 2024 to 21 MAR 2024

SE-3, 22 FEB 2024 to 21 MAR 2024

EMEG SAFE ALT 100 NM 15,000	ELEV 6	TDZE 6
-----------------------------	--------	--------



CATEGORY	A	B	C	D
S-26	460-1	454 (500-1)	460-1 3/8	454 (500-1 3/8)
CIRCLING	460-1	500-1	500-1 1/2	560-2
	454 (500-1)	494 (500-1)	494 (500-1 1/2)	554 (600-2)



KEY WEST, FLORIDA
 Andd 4 23FEB23
 24°34'N-81°41'W
 KEY WEST NAS (BOCA CHICA FLD) (KNQX)
 TACAN RWY 26

KEY WEST, FLORIDA

TACAN Y RWY 32

TACAN NOX Chan 78	APCH CRS 335°	Fix/Ideg TDZE Appt Elev	7000 4 6
----------------------	------------------	-------------------------------	-------------------------------------

AL-21.4 [USN]

KEY WEST NAS (BOCA CHICA FLD) (KNOX)

MISSED APPROACH: Climb to 500. Then climbing right turn to 1600. Intercept NOX R-094 to CANNIN (NOX R-094/6 DME) and hold.

AIS ★ 307.025	NAVY KEY WEST APP CON 124.025 313.7
-------------------------	---

NAVY KEY WEST TOWER ★ 118.575 340.25
--

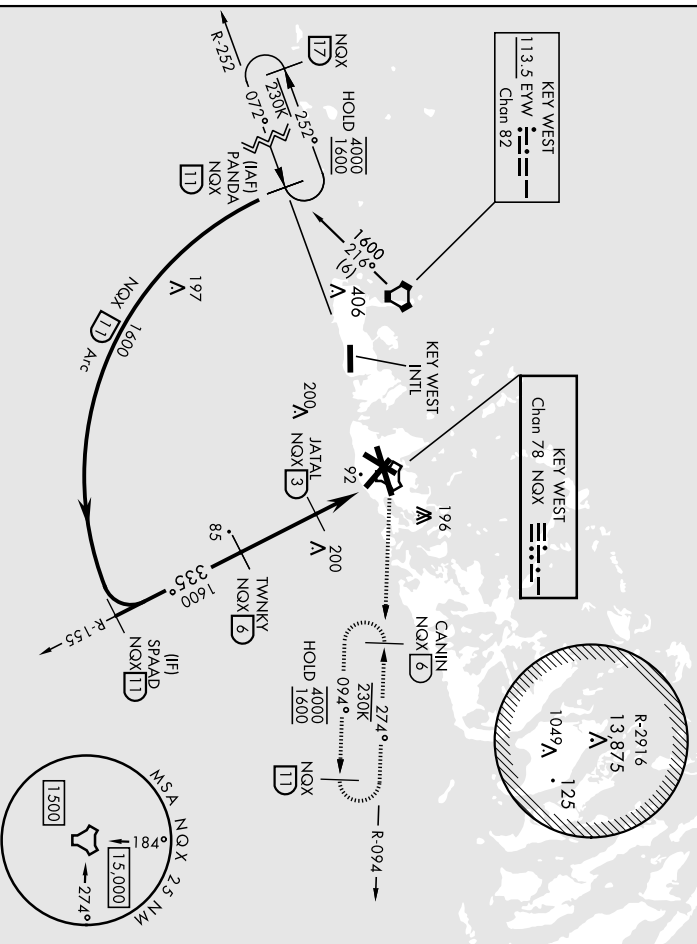
GND CON 121.7 336.45

CLNC DEL 121.2 357.4

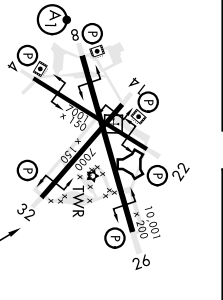
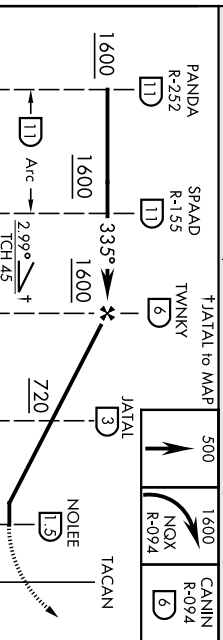
ASR/PAR 121.5 357.4

CAUTION: Short Intermediate Segment

CAUTION: Balloon with strobe light on unmarked cable to 14,000 in R-2916.



EMERG SAFE ALT 100 NM 15,000



CATEGORY	A	B	C	D
S-32	360-1	500-1	356	(400-1)
☑ CIRCLING	440-1 434 (500-1)	500-1 494 (500-1)	500-1 1/2 494 (500-1 1/2)	560-2 554 (600-2)

KEY WEST, FLORIDA
 KEY WEST, FLORIDA
 Orig 23FEB23
 24°34'N-81°41'W KEY WEST NAS (BOCA CHICA FLD) (KNOX)
 HIRL all rwy's
TACAN Y RWY 32

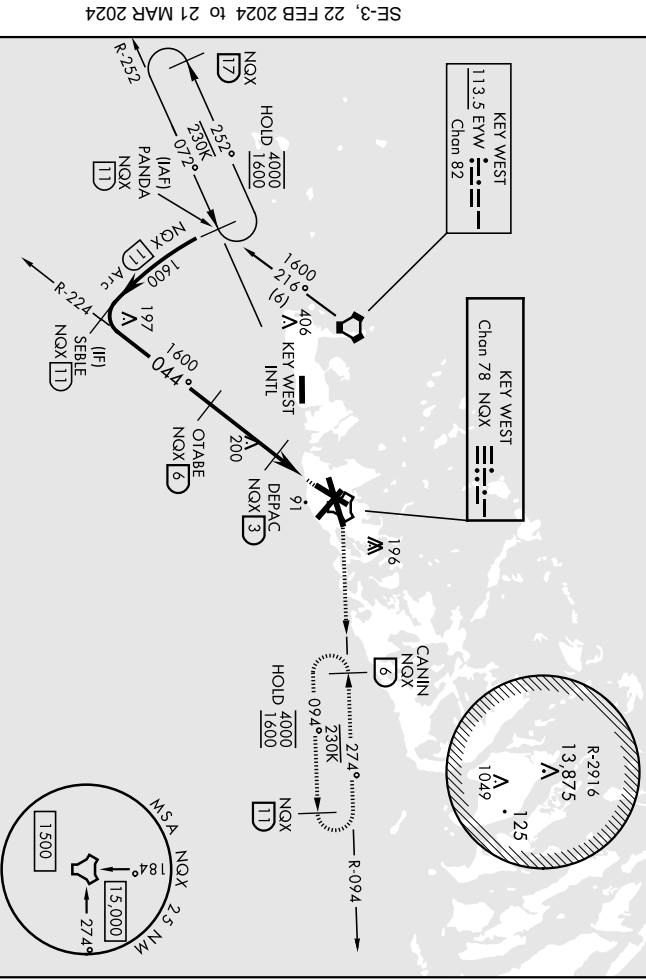
TACAN Y RWY 4

TACAN NOX Chan 78	APCH CRS 044°	Fix/Idg TDZE Appt Elev	7001 4 6	AL-21.4 [USN]	KEY WEST NAS (BOCA CHICA FLD) (KNQX)
ATIS ★ 307.025	NAVY KEY WEST APP CON 124.025 313.7	NAVY KEY WEST TOWER ★ 118.575 340.25	GND CON 121.7 336.45	CINC DEL 121.2 357.4	ASR/PAR

MISSED APPROACH: Climb to 1600 via NOX TACAN R-224 to NOX, then via NOX R-094 to CANNIN and hold.

CAUTION: Short Intermediate Segment

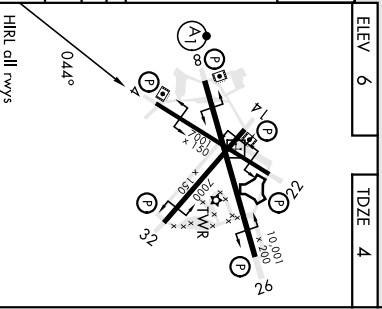
CAUTION:
Balloon with strobe light on unmarked stubble to 14,000 ft R-291.6.



EMERG SAFE ALT 100 NM 15,000

CATEGORY	A	B	C	D
	360-1	356 (400-1)	500-1½	560-2
S-4	440-1	500-1	500-1½	560-2
Ⓢ CIRCLING	434 (500-1)	494 (500-1)	494 (500-1½)	554 (600-2)

PANDA R-252	SEBLE R-224	OTABE 6	DEBPAC 3	HEVEL 18	TACAN R-094
1600	1600	1600	1600	1600	1600
TD	TD	6	3	18	NOX
1600	1600	1600	640	3.04°	NOX R-094
11 Arc	11 Arc	3 NM	TCH 35	1.2 NM	NOX R-094
				0.7	



TACAN Y RWY 4

24°34'N-81°41'W KEY WEST NAS (BOCA CHICA FLD) (KNQX)

TACAN NOX Chan 78	APCH CRS 072°	Fix/Ide TDZE Appl Elev	10,001 4 6
----------------------	------------------	------------------------------	------------------

ALSIF-1 (A1)	AL-21.4 (USN)
-----------------	---------------

MISSED APPROACH: Climb to 1,600 via R-252 to NOX TACAN then via R-094 to CANNIN (NOX R-094/6 DME) and hold.	KEY WEST NAS (BOCA CHICA FLD) (KNOX)
---	--------------------------------------

ATIS * 307.025	NAVY KEY WEST APP CON 124.025 313.7
-------------------	--

NAVY KEY WEST TOWER * 118.575 340.25

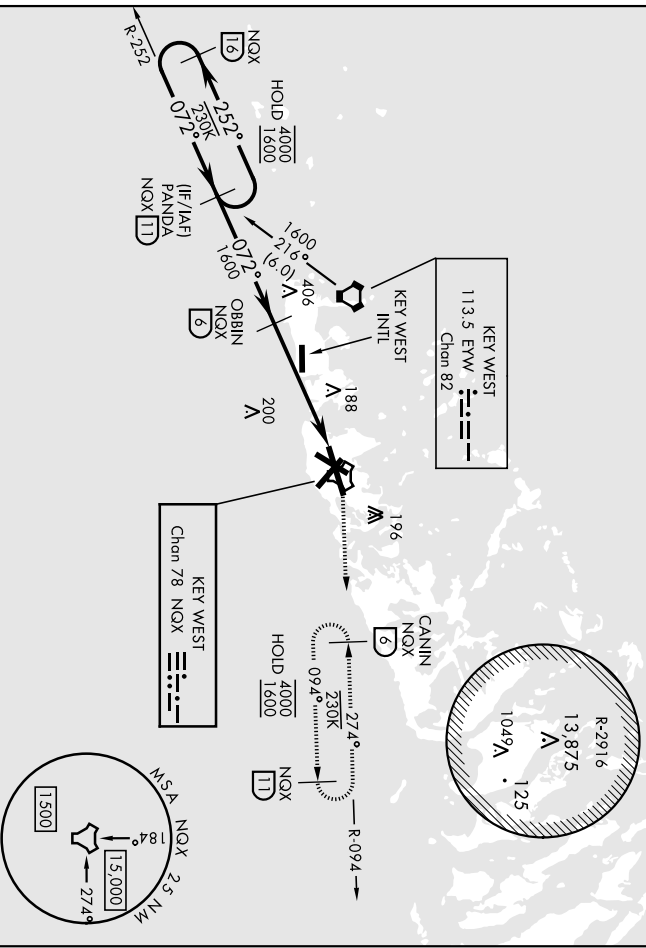
GND CON 121.7 336.45

CINC DEL 121.2 357.4

ASR/PAR

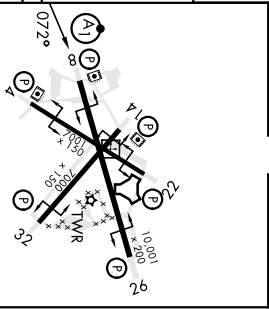
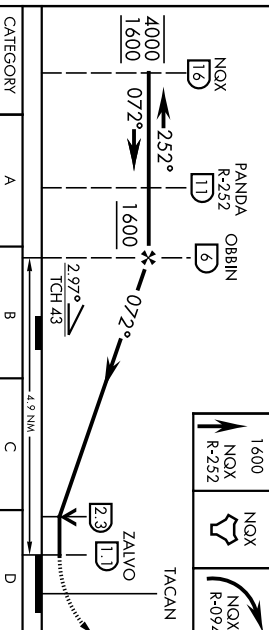
CAUTION: Short Intermediate Segment

CAUTION:
Bollon with strobe light
on unmarked cable to
14,000 in R-2916.



EMERG SAFE ALT 100 NM 15,000

ELEV 6	TDZE 4
--------	--------



CATEGORY	A	B	C	D
S-8 *	440-1/2 436 (500-1/2)	440-3/4 436 (500-3/4)		
CIRCLING	440-1 434 (500-1)	500-1 494 (500-1)	500-1 1/2 494 (500-1 1/2)	560-2 554 (600-2)

KEY WEST, FLORIDA
24°34'N-81°41'W KEY WEST NAS (BOCA CHICA FLD) (KNOX)
HRL all rwy's

VOR/DME RWY 26

EWV VORTAC 113.5 Chan 82	APCH CRS 270°	Rwy Idg TDZE Appt Elev	10 001 6 6
--	-------------------------	------------------------------	---------------------------------------

AL-214 (USN)

KEY WEST NAS (BOCA CHICA FID)

(KNOX)

NAVY KEY WEST APP CON
307.025 **124.025** **313.7**

NAVY KEY WEST TOWER *
118.575 **340.25**

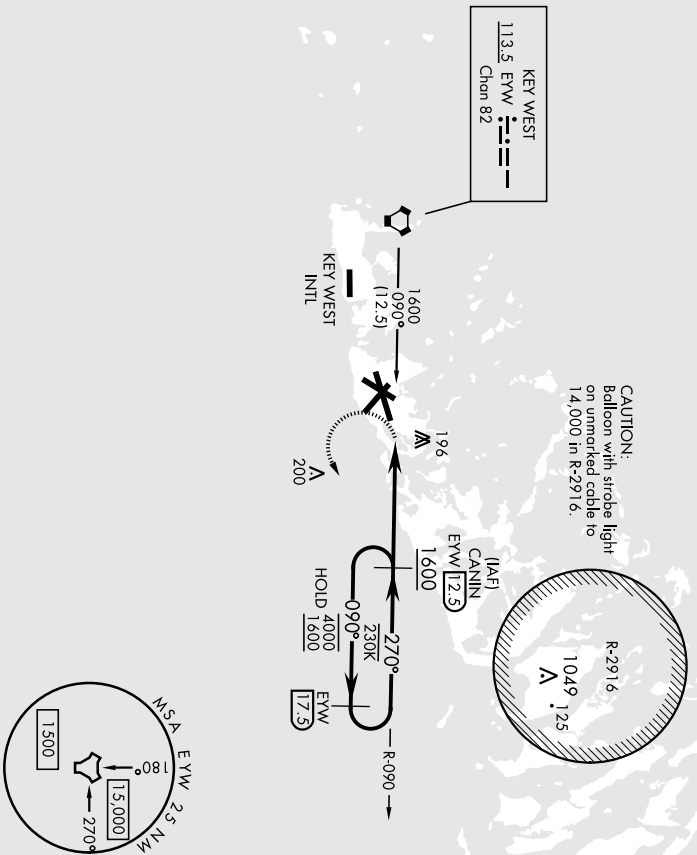
GND CON
121.7 **336.45**

CLNC DEL
121.2 **357.4**

ASR/PAR

MISSED APPROACH: Climb to 500, then climbing left turn to 1600 to intercept EWV VORTAC R-090 to CANIN and hold.

CAUTION: Final approach course crosses the extended runway centerline 5018' from threshold.



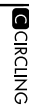
EMERG SAFE ALT 100 NM 15,000



CANIN ELEV (VGS) angle 3.00/TCH 43
CANIN ELEV (VGS) angle 3.00/TCH 43
CANIN ELEV (VGS) angle 3.00/TCH 43



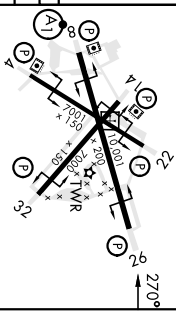
CATEGORY	A	B	C	D
S-26	460-1	454 (500-1)	460-1 3/4	454 (500-1 3/4)
QIRCLING	460-1	500-1	500-1 1/2	560-2
	454 (500-1)	494 (500-1)	494 (500-1 1/2)	554 (600-2)



KEY WEST, FLORIDA

24°34'N-81°41'W

KEY WEST NAS (BOCA CHICA FID) (KNOX)



VOR/DME RWY 26

VOR/DME or TACAN Z RWY 8

EWV VORTAC 113.5 Chan 82	APCH CRS 098°	Req'd Idg TDZE Appt Elev	10,001 4 6
--	-------------------------	--------------------------------	---------------------------------------

ALSF-1

MISSED APPROACH: Climbing left turn to 1,600 to intercept EWV R-090 to CANIN and hold.

AL-21.4 (USN) KEY WEST NAS (BOCA CHICA FLD) (KNQX)

AIS ★ 307.025	NAVY KEY WEST APP CON 124.025 313.7
--------------------------------	---

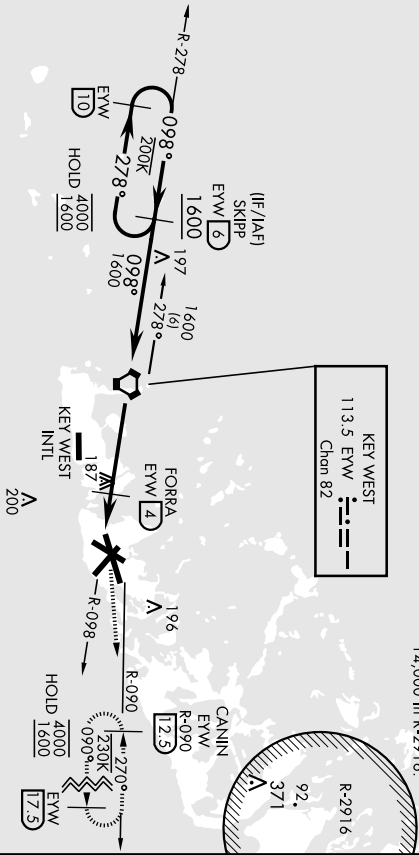
NAVY KEY WEST TOWER ★ 118.575 340.25

GND CON 121.7 336.45

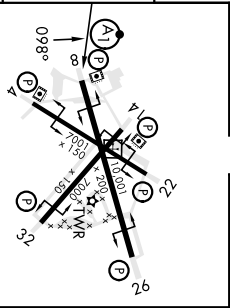
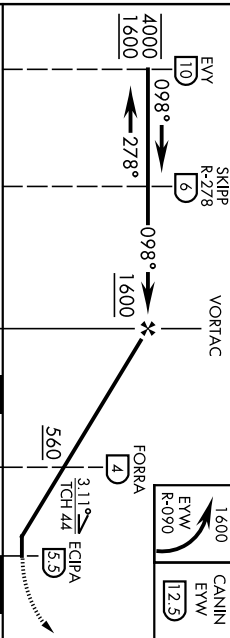
CING DEL 121.2 357.4

ASR/PAR

CAUTION:
Balloon with strobe light on unmarked cable to 14,000 In R-2916.



EMERG SAFE ALT 100 NM 15,000



CATEGORY	A	B	C	D
S-8	440-1 436 (500-1)	500-1	440-1½ 436 (500-1½)	560-2
CIRCLING	440-1 434 (500-1)	500-1	494 (500-1½)	554 (600-2)

KEY WEST, FLORIDA	ELEV 6	TDZE 4
-------------------	--------	--------

KEY WEST, FLORIDA

24°34'N-81°41'W KEY WEST NAS (BOCA CHICA FLD) (KNQX)

Arr'd 4 23FEB23

VOR/DME or TACAN Z RWY 8