

NDB OEL 380	APP CRS 341°	Rwy Idg TDZE Apt Elev	5000 3035 3045
-----------------------	------------------------	-----------------------------	---

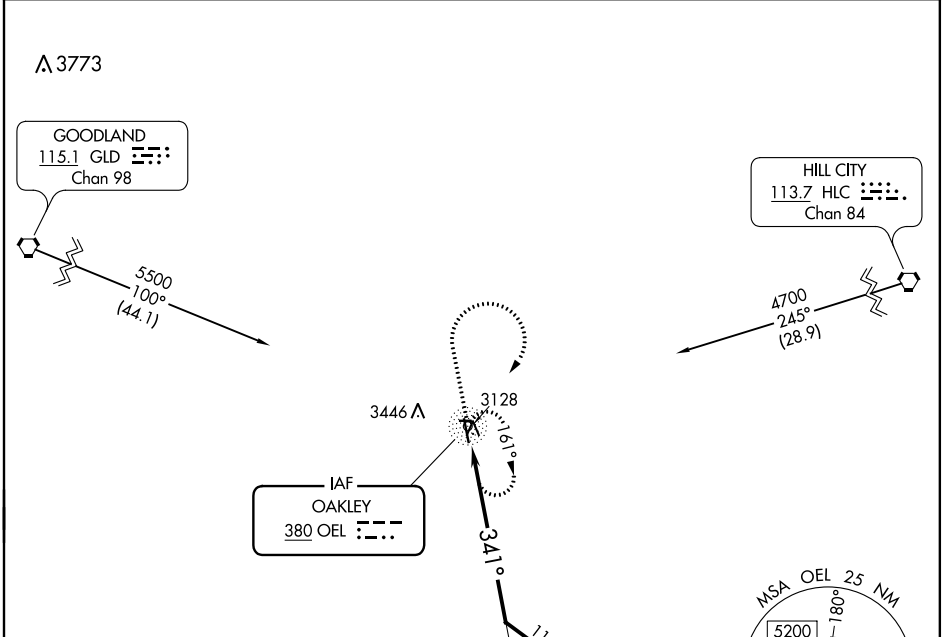
NDB RWY 34

OAKLEY MUNI (OEL)

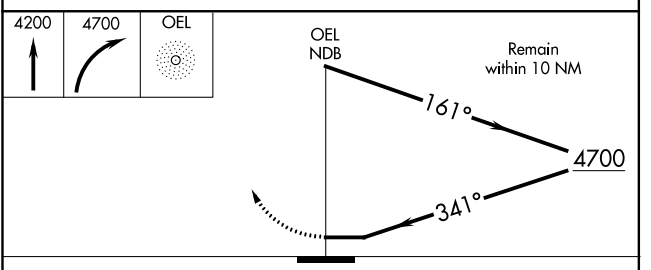
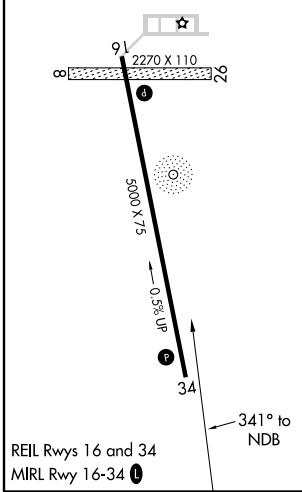
⚠ When local altimeter setting not received, use Renner Fld/Goodland Muni altimeter setting: increase all MDA 200 feet and visibility Circling Cat B ½ SM and Cat C ¾ SM. Circling NA to Rwys 8 and 26. Circling Rwy 16 NA at night.

⚠ MISSED APPROACH: Climb to 4200, then climbing right turn to 4700 direct OEL NDB and hold.

AWOS-3 118.325	DENVER CENTER 132.7 226.675	UNICOM 122.8 (CTAF) 0
--------------------------	---------------------------------------	---------------------------------



ELEV 3045	D	TDZE 3035
-----------	----------	-----------



CATEGORY	A	B	C	D
S-34	3640-1	605 (600-1)	3640-1¾ 605 (600-1¾)	NA
CIRCLING	3640-1 595 (600-1)	3800-1 755 (800-1)	3800-2¼ 755 (800-2¼)	NA

NC-2, 19 MAY 2022 to 16 JUN 2022

NC-2, 19 MAY 2022 to 16 JUN 2022

WAAS CH 69500 W34A	APP CRS 341°	Rwy Idg TDZE Apt Elev	5000 3035 3045
--	------------------------	-----------------------------	---

RNAV (GPS) RWY 34

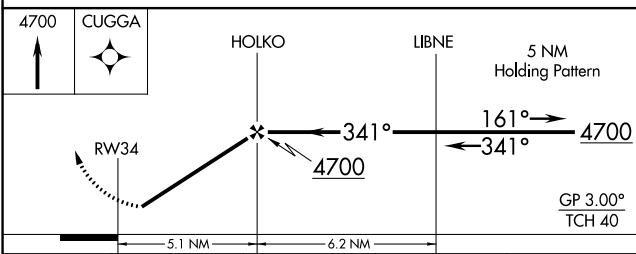
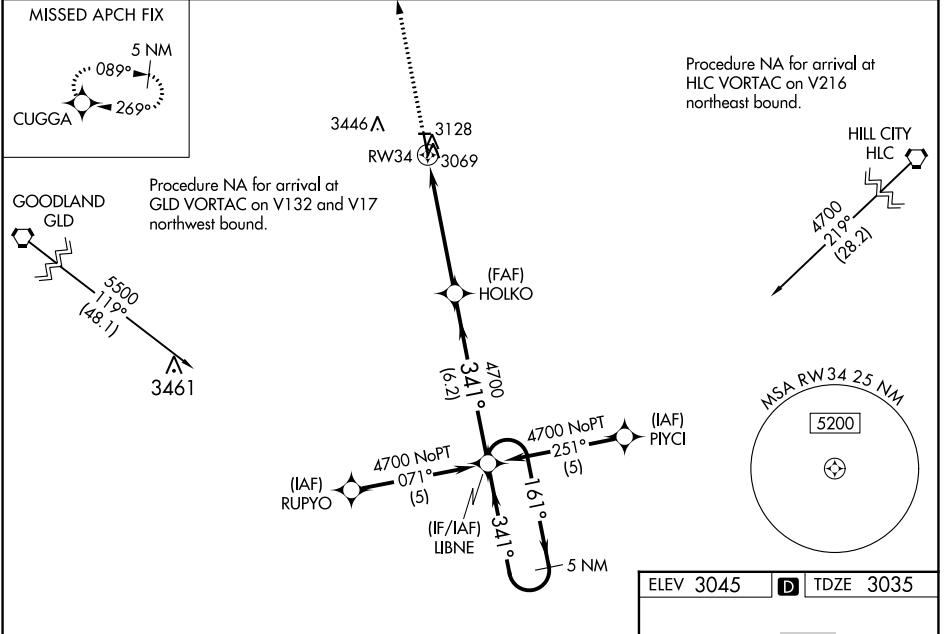
OAKLEY MUNI (OEL)

RNP APCH.

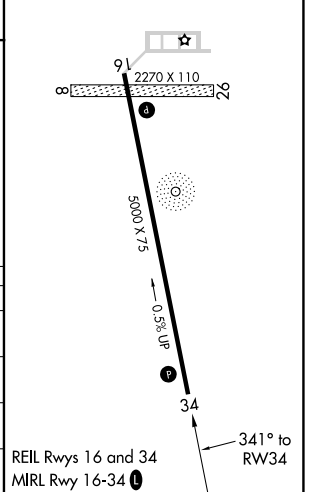
When local altimeter setting not received, use Renner Fld/Goodland Muni altimeter setting: increase LPV DA to 3471 feet and LNAV/VNAV DA to 3658 feet; increase all MDA 200 feet and visibility LNAV Cat C ¾ SM and Circling Cat C ¾ SM. For uncompensated Baro-VNAV systems, LNAV/VNAV NA below -21°C or above 42°C. Baro-VNAV NA when using Renner Fld/Goodland Muni altimeter setting. Circling NA to Rwy 8 and 26. Circling Rwy 16 NA at night.

MISSED APPROACH: Climb to 4700 direct CUGGA and hold.

AWOS-3 118,325	DENVER CENTER 132.7 226.675	UNICOM 122.8 (CTAF)
--------------------------	---------------------------------------	-------------------------------



ELEV 3045	TDZE 3035
-----------	-----------



CATEGORY	A	B	C	D
LPV DA		3285-1	250 (300-1)	NA
LNAV/VNAV DA		3472-1½	437 (500-1½)	NA
LNAV MDA		3380-1	345 (400-1)	NA
CIRCLING	3480-1½ 435 (500-1½)	3800-1½ 755 (800-1½)	3800-2¼ 755 (800-2¼)	NA

NC-2, 19 MAY 2022 to 16 JUN 2022

NC-2, 19 MAY 2022 to 16 JUN 2022