

**TOP ALTITUDE:  
3000**

AWOS-3  
124.85  
CLNC DEL  
126.15  
UNICOM  
122.7 (CTAF)  
POTOMAC DEP CON  
120.45 306.925



(CLTCH2,CLTCH) 18088  
CLTCH TWO DEPARTURE (RNAV)

AL-5251

WINCHESTER RGNL (OKV)  
WINCHESTER, VIRGINIA

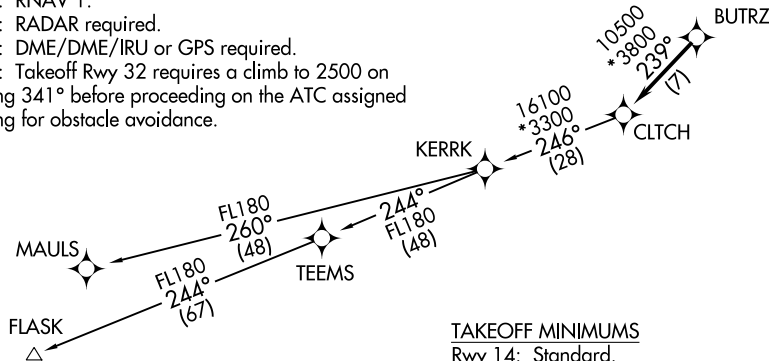
**DEPARTURE ROUTE DESCRIPTION**

Climb on heading assigned by ATC, expect RADAR vectors to BUTRZ, then on track 239° to CLTCH, thence. . . .

. . . . on assigned transition, maintain altitude assigned by ATC, expect clearance to filed altitude within ten (10) minutes after departure.

FLASK TRANSITION (CLTCH2.FLASK)  
MAULS TRANSITION (CLTCH2.MAULS)

NOTE: RNAV 1.  
NOTE: RADAR required.  
NOTE: DME/DME/IRU or GPS required.  
NOTE: Takeoff Rwy 32 requires a climb to 2500 on heading 341° before proceeding on the ATC assigned heading for obstacle avoidance.



**TAKEOFF MINIMUMS**

Rwy 14: Standard.  
Rwy 32: Standard with minimum climb of 240' per NM to 1900.



NOTE: Chart not to scale.

CLTCH TWO DEPARTURE (RNAV)  
(CLTCH2,CLTCH) 29MARI8

WINCHESTER, VIRGINIA  
WINCHESTER RGNL (OKV)

AWOS-3  
124.85  
CLNC DEL  
126.15  
UNICOM  
122.7 (CTAF)  
POTOMAC DEP CON  
120.45 306.925

**TOP ALTITUDE:  
3000**



P-56A



**DEPARTURE ROUTE DESCRIPTION**

Climb on heading assigned by ATC, expect RADAR vectors to HAFNR, then on track 225° to JDUBB, thence. . . .

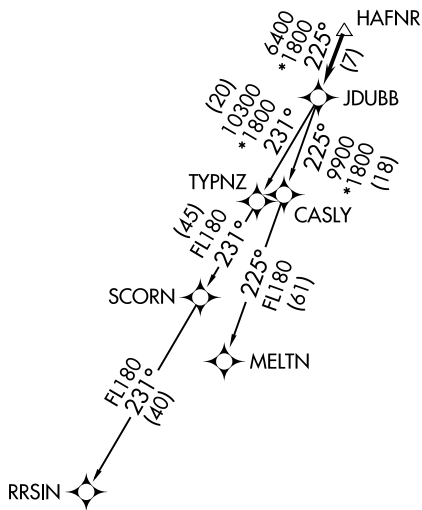
. . . . on assigned transition, maintain 3000, expect clearance to filed altitude within ten (10) minutes after departure.

MELTN TRANSITION (JDUBB3.MELTN)

RRSIN TRANSITION (JDUBB3.RRSIN)

NE-3, 10 SEP 2020 to 08 OCT 2020

NE-3, 10 SEP 2020 to 08 OCT 2020



NOTE: RNAV 1.  
 NOTE: RADAR required.  
 NOTE: DME/DME/IRU or GPS required.  
 NOTE: Takeoff Rwy 32 requires a climb to 2500 on heading 341° before proceeding on the ATC assigned heading for obstacle avoidance.

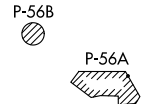
TAKEOFF MINIMUMS

Rwy 14: Standard  
 Rwy 32: Standard with minimum climb of 240' per NM to 1900.

NOTE: Chart not to scale.

**TOP ALTITUDE:  
3000**

AWOS-3  
124.85  
CLNC DEL  
126.15  
UNICOM  
122.7 (CTAF)  
POTOMAC DEP CON  
120.45 306.925



(SCRAM5.SCRAM) 20086  
**SCRAM FIVE DEPARTURE (RNAV)**  
AL-5251  
WINCHESTER RGNL (OKT)  
WINCHESTER, VIRGINIA

**SCRAM FIVE DEPARTURE (RNAV)**  
(SCRAM5.SCRAM) 20086  
WINCHESTER, VIRGINIA  
WINCHESTER RGNL (OKT)

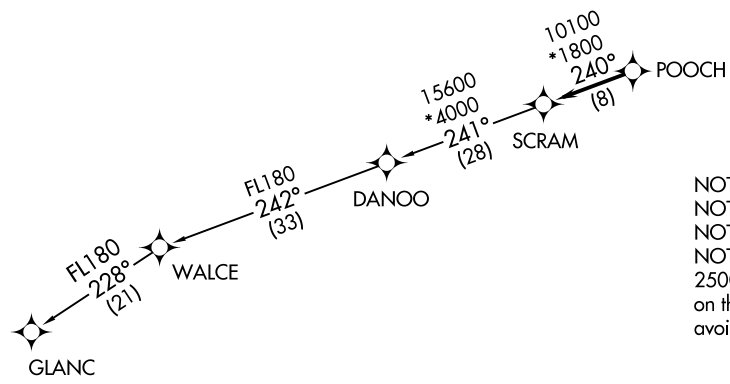
**DEPARTURE ROUTE DESCRIPTION**

Climb on heading assigned by ATC, expect RADAR vectors to POOCH, then on track 240° to SCRAM, thence. . . .

. . . . on GLANC transition, maintain 3000, expect clearance to filed altitude within ten (10) minutes after departure.

GLANC TRANSITION (SCRAM5.GLANC):

**TAKEOFF MINIMUMS**  
Rwy 14: Standard.  
Rwy 32: Standard with minimum climb of 240' per NM to 1900.



NOTE: RNAV 1.  
NOTE: RADAR required.  
NOTE: DME/DME/IRU or GPS required.  
NOTE: Takeoff Rwy 32 requires a climb to 2500 on heading 341° before proceeding on the ATC assigned heading for obstacle avoidance.



NOTE: Chart not to scale.