

(BRKSR.AANDY2) 22307

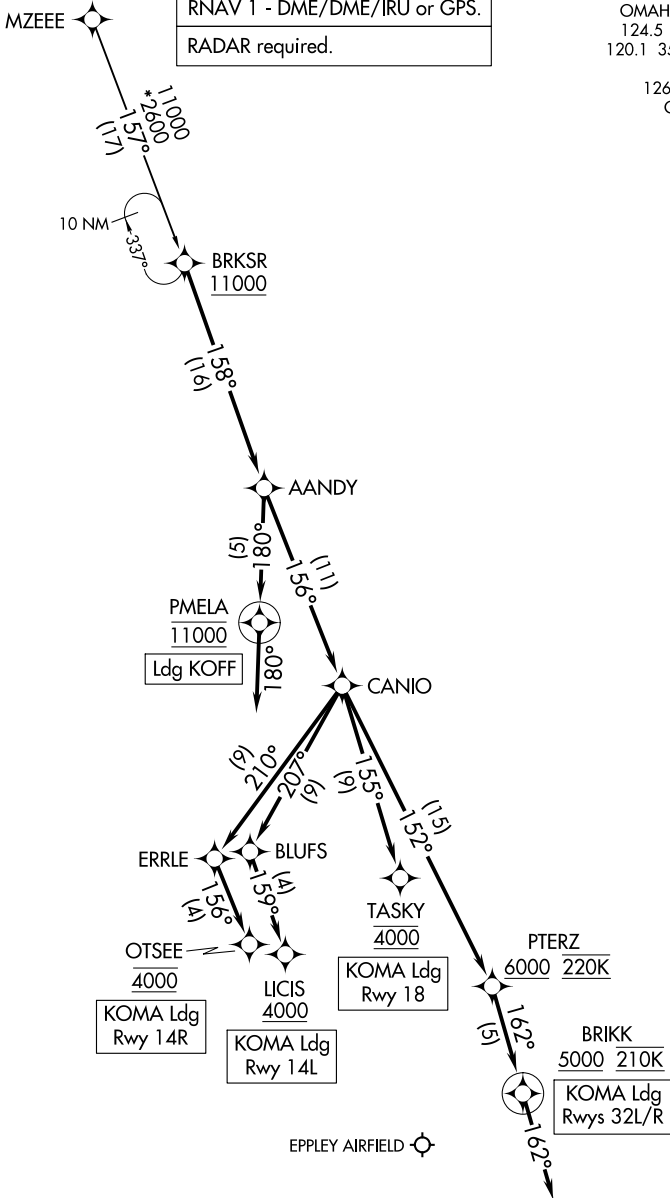
AANDY TWO ARRIVAL (RNAV)

AL-304 (FAA)

OMAHA, NEBRASKA

RNAV 1 - DME/DME/IRU or GPS.
RADAR required.

OMAHA APP CON
 124.5 263.0 EAST
 120.1 354.05 WEST
 KOFF ATIS
 126.025 273.5
 OMA D-ATIS
 120.4



NC-2, 22 FEB 2024 to 21 MAR 2024

NC-2, 22 FEB 2024 to 21 MAR 2024

(NARRATIVE ON FOLLOWING PAGE)

© OFFUTT AFB

NOTE: Chart not to scale.

AANDY TWO ARRIVAL (RNAV)

OMAHA, NEBRASKA

(BRKSR.AANDY2) 03NOV22

ARRIVAL ROUTE DESCRIPTION

MZEEE TRANSITION (MZEEE.AANDY2)

LANDING KOMA

From BRKSR on track 158° to AANDY, then on track 156° to CANIO.

LANDING RUNWAY 14L: From CANIO on track 207° to BLUFS, then on track 159° to cross LICIS at or above 4000. Expect RNAV (RNP) Z RWY 14L or RADAR vectors for the ILS RWY 14L approach.

LANDING RUNWAY 14R: From CANIO on track 210° to ERRLE, then on track 156° to cross OTSEE at 4000. Expect RNAV (RNP) Z RWY 14R or ILS RWY 14R approach.

LANDING RUNWAY 18: From CANIO on track 155° to cross TASKY at 4000. Expect RNAV (RNP) RWY 18 or ILS RWY 18 approach.

LANDING RUNWAYS 32L/R: From CANIO on track 152° to cross PTERZ at or above 6000 and at 220K, then on track 162° to cross BRIKK at or above 5000 and at 210K, then on track 162°. Expect RADAR vectors to final approach course.

LANDING KOFF

From BRKSR on track 158° to AANDY, then on track 180° to cross PMELA at 11000, then on track 180°. Expect RADAR vectors to final approach course.

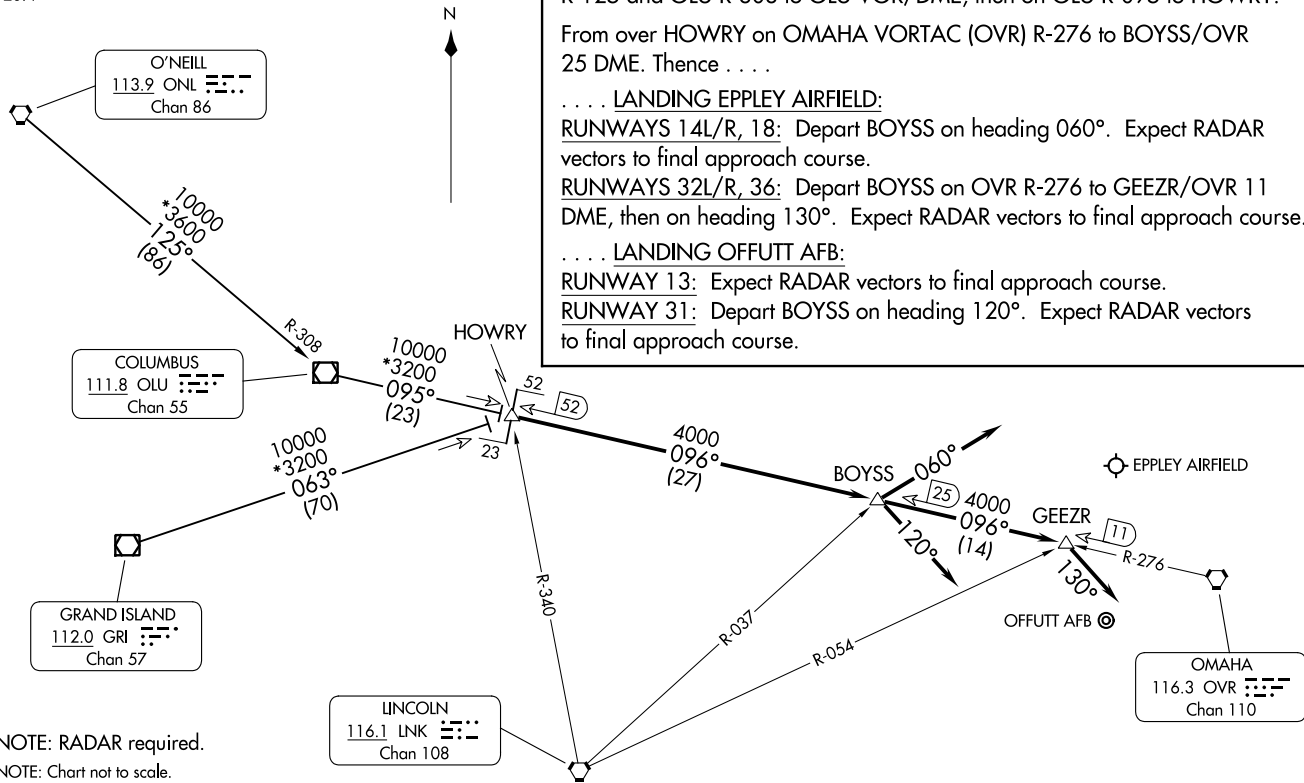
NC-2, 22 FEB 2024 to 21 MAR 2024

NC-2, 22 FEB 2024 to 21 MAR 2024

HOWRY THREE ARRIVAL
(HOWRY.HOWRY3) 20APR23

OMAHA, NEBRASKA

OMAHA APP CON
124.5 263.0 EAST
120.1 354.05 WEST
KOFF ATIS
126.025 273.5
OMA D-ATIS
120.4



NOTE: RADAR required.
NOTE: Chart not to scale.

ARRIVAL ROUTE DESCRIPTION

GRAND ISLAND TRANSITION (GRI.HOWRY3): From over GRI VOR/DME on GRI R-063 to HOWRY.

O'NEILL TRANSITION (ONL.HOWRY3): From over ONL VORTAC on ONL R-125 and OLU R-308 to OLU VOR/DME, then on OLU R-095 to HOWRY.

From over HOWRY on OMAHA VORTAC (OVR) R-276 to BOYSS/OVR 25 DME. Thence

. . . . LANDING EPPLEY AIRFIELD:

RUNWAYS 14L/R, 18: Depart BOYSS on heading 060°. Expect RADAR vectors to final approach course.

RUNWAYS 32L/R, 36: Depart BOYSS on OVR R-276 to GEEZR/OVR 11 DME, then on heading 130°. Expect RADAR vectors to final approach course.

. . . . LANDING OFFUTT AFB:

RUNWAY 13: Expect RADAR vectors to final approach course.

RUNWAY 31: Depart BOYSS on heading 120°. Expect RADAR vectors to final approach course.

(HOWRY.HOWRY3) 23334
HOWRY THREE ARRIVAL

AL-304 (FAA)

OMAHA, NEBRASKA

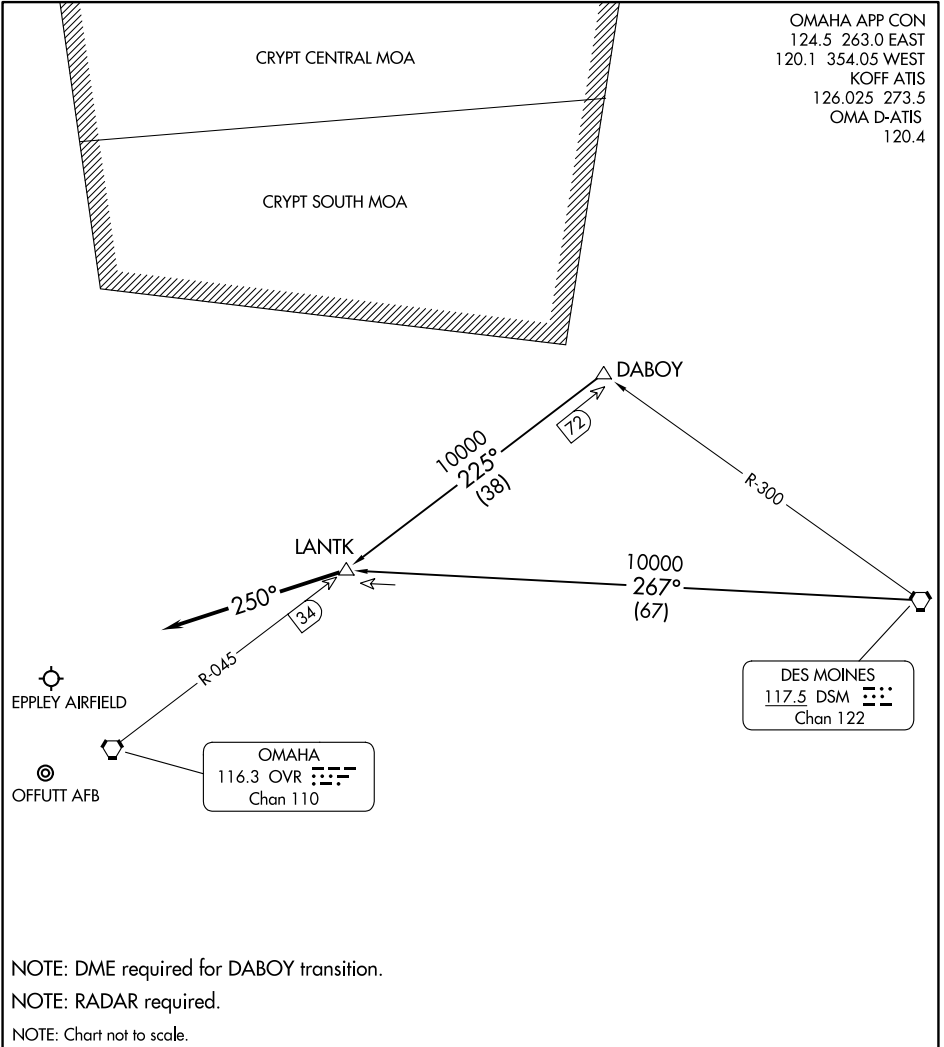
(LANTK.LANTK2) 23334

LANTK TWO ARRIVAL

AL-304 (FAA)

OMAHA, NEBRASKA

OMAHA APP CON
 124.5 263.0 EAST
 120.1 354.05 WEST
 KOFF ATIS
 126.025 273.5
 OMA D-ATIS
 120.4



NC-2, 22 FEB 2024 to 21 MAR 2024

NC-2, 22 FEB 2024 to 21 MAR 2024

- NOTE: DME required for DABOY transition.
- NOTE: RADAR required.
- NOTE: Chart not to scale.

ARRIVAL ROUTE DESCRIPTION

DABOY TRANSITION (DABOY.LANTK2): From over DABOY on OVR R-045 to LANTK. Thence. . .

DES MOINES TRANSITION (DSM.LANTK2): From over DSM VORTAC on DSM R-267 to LANTK. Thence. . .

. . . From over LANTK fly heading 250° and expect RADAR vectors to final approach course.


LANTK TWO ARRIVAL

(LANTK.LANTK2) 08SEP22

OMAHA, NEBRASKA

EPPLEY AIRFIELD

OMAHA APP CON
124.5 263.0 EAST
120.1 354.05 WEST
KOFF ATIS
126.025 273.5
OMA D-ATIS
120.4

OMAHA
116.3 OVR 
Chan 110

OFFUTT AFB

R-120

320°
300°
(17)


SWAAB

300°
(21)

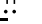
38

MARWI

10000
275°
(52)

LAMONI
116.7 LMN 
Chan 114

10000
344°
(50)

ST JOSEPH
115.5 STJ 
Chan 102

NOTE: RADAR required.
NOTE: DME required.

ARRIVAL ROUTE DESCRIPTION

LAMONI TRANSITION (LMN.MARWI4): From over LMN VOR/DME on LMN R-275 to MARWI.

ST. JOSEPH TRANSITION (STJ.MARWI4): From over STJ VORTAC on STJ R-344 to MARWI.

LANDING EPPLEY AIRFIELD:

RUNWAYS 14L/R, 18: Depart MARWI on OVR R-120 to SWAAB then on heading 320°. Thence

RUNWAYS 32L/R, 36: Depart MARWI on OVR R-120 to SWAAB then on OVR R-120 to OVR VORTAC. Thence

LANDING OFFUTT AFB:

Depart MARWI on heading 280°. Thence

. . . . Expect RADAR vectors to final approach course.

NOTE: Chart not to scale.

NC-2, 22 FEB 2024 to 21 MAR 2024

NC-2, 22 FEB 2024 to 21 MAR 2024

(HILRS.TIMMO1) 22307

TIMMO ONE ARRIVAL (RNAV)

AL-304 (FAA)

OMAHA, NEBRASKA

OMAHA APP CON
124.5 263.0 EAST
120.1 354.05 WEST
KOFF ATIS
126.025 273.5
OMA D-ATIS
120.4

RNAV 1-DME/DME/IRU or GPS.

RADAR required.

CRPET
5000 210K

Ldg KOMA Rwy's
14L/R, 18

EPPLEY AIRFIELD

ARRIVAL ROUTE DESCRIPTION

HTHWY TRANSITION (HTHWY.TIMMO1)

LANDING KOMA

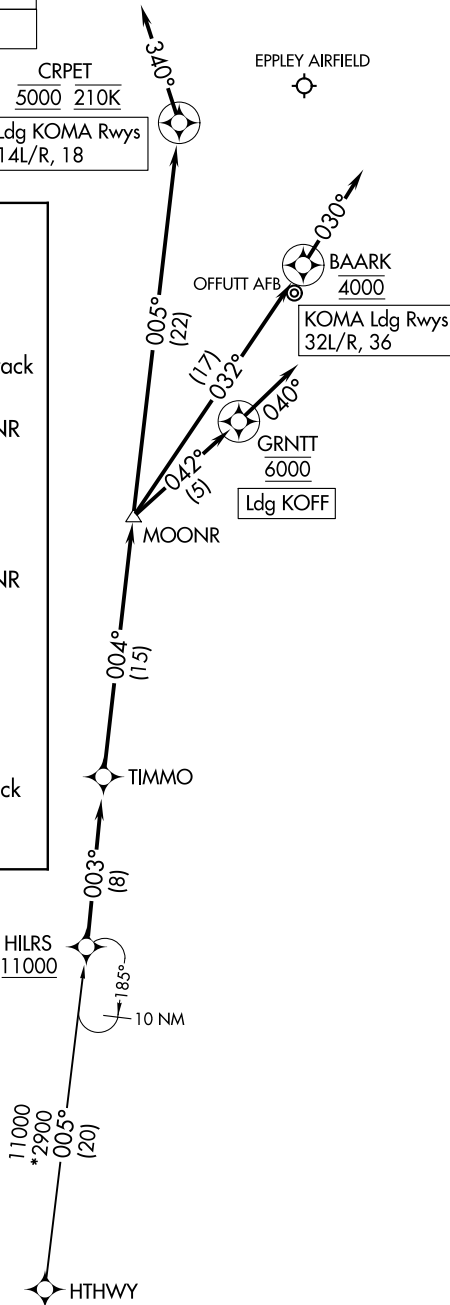
From HILRS on track 003° to TIMMO, then on track 004° to MOONR.

LANDING RUNWAYS 14L/R, 18: From MOONR on track 005° to cross CRPET at 5000, and at 210K, then on heading 340° or as assigned by ATC. Expect RADAR vectors to final approach course.

LANDING RUNWAYS 32L/R, 36: From MOONR on track 032° to cross BAARK at 4000, then on track 030°. Expect RADAR vectors to final approach course.

LANDING KOFF

From HILRS on track 004° to MOONR, then on track 042° to cross GRNTT at 6000, then on track 040°. Expect RADAR vectors to final approach course.



NOTE: For non-GPS equipped aircraft, LNK DME must be operational.

NOTE: Chart not to scale.

TIMMO ONE ARRIVAL (RNAV)

OMAHA, NEBRASKA

(HILRS.TIMMO1) 27JAN22

NC-2, 22 FEB 2024 to 21 MAR 2024

NC-2, 22 FEB 2024 to 21 MAR 2024