

LOC/DME I-OLX 111.55 Chan 52 (Y)	APP CRS 128°	Rwy Idg TDZE Apt Elev	6000 8 8
-----------------------------------------------	------------------------	-----------------------------	-------------------------------------

ILS or LOC RWY 12

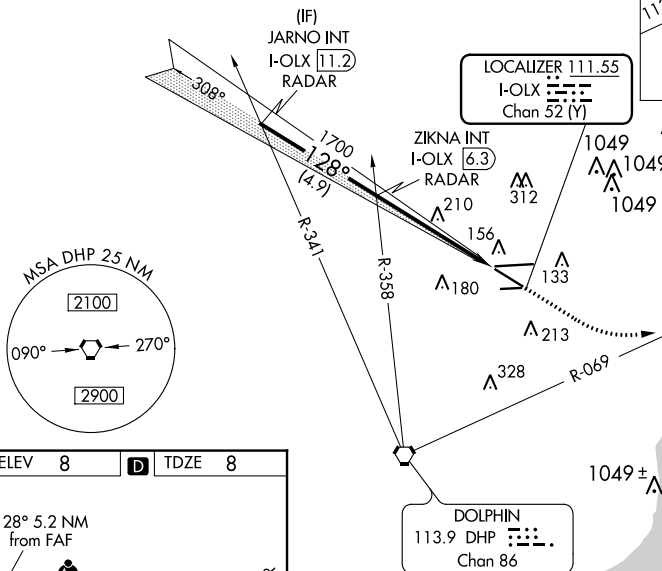
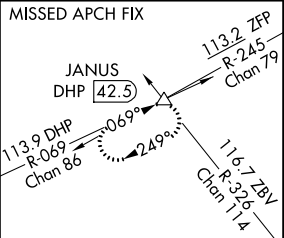
MIAMI-OPA LOCKA EXEC (OPF)

⚠ Inop table does not apply to S-ILS 12. Helicopter visibility reduction below 3/4 SM NA. VDP NA with Miami Intl altimeter setting. When local altimeter setting not received, use Miami Intl altimeter setting and increase all DA/MDA 20 feet and Circling Cat D visibility 1/4 SM. For inop MALSR, increase S-LOC 12 Cats A and B visibility to 1 mile and Cats C and D visibility to 1 1/8 miles.

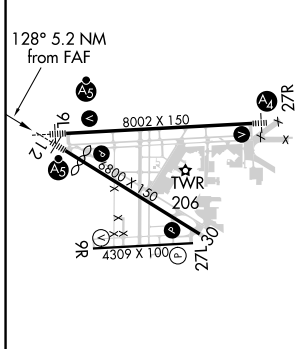
MALSR
MISSED APPROACH: Climb to 800 then climbing left turn to 2000 on heading 090° and DHP VORTAC R-069 to JANUS INT/DHP 42.5 DME and hold.

ATIS 125.9	MIAMI APP CON 128.6 306.975	OPA LOCKA TOWER * 134.675 (CTAF) 0	GND CON 120.025	CLNC DEL 119.2	GCO 119.45
----------------------	---------------------------------------	----------------------------------------------	---------------------------	--------------------------	----------------------

RADAR REQUIRED



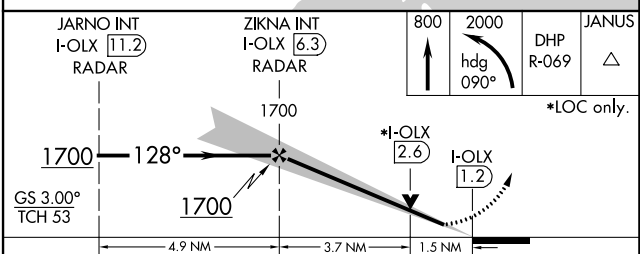
ELEV 8	D	TDZE 8
--------	----------	--------



MIRL Rwy 9R-27L
HIRL Rwys 9L-27R and 12-30

FAF to MAP 5.2 NM

Knots	60	90	120	150	180
Min:Sec	5:12	3:28	2:36	2:05	1:44



CATEGORY	A	B	C	D
S-ILS 12	208-3/4 200 (200-3/4)			
S-LOC 12	520-3/4	512 (600-3/4)	520-1	512 (600-1)
CIRCLING	540-1	532 (600-1)	620-1 3/4 612 (700-1 3/4)	740-2 1/4 732 (800-2 1/4)

SE-3, 22 FEB 2024 to 21 MAR 2024

SE-3, 22 FEB 2024 to 21 MAR 2024

LOC/DME I-PLJ 111.35 Chan 50 (Y)	APP CRS 273°	Rwy Idg 8002 TDZE 8 Apt Elev 8
-----------------------------------------------	------------------------	-----------------------------------------------

ILS or LOC RWY 27R

MIAMI-OPA LOCKA EXEC (OPF)

⚠ DME required. When local altimeter setting not received, use Miami Intl altimeter setting and increase all DA/MDA 20 feet and Circling Cat D visibility ¼ SM. For inop MALS, increase S-ILS 27R all Cats visibility to 7/8 mile and S-LOC Cats C/D visibility to 1 1/8 mile. Helicopter visibility reduction below 3/4 SM NA. Autopilot coupled approach NA below 700 feet.

MALS

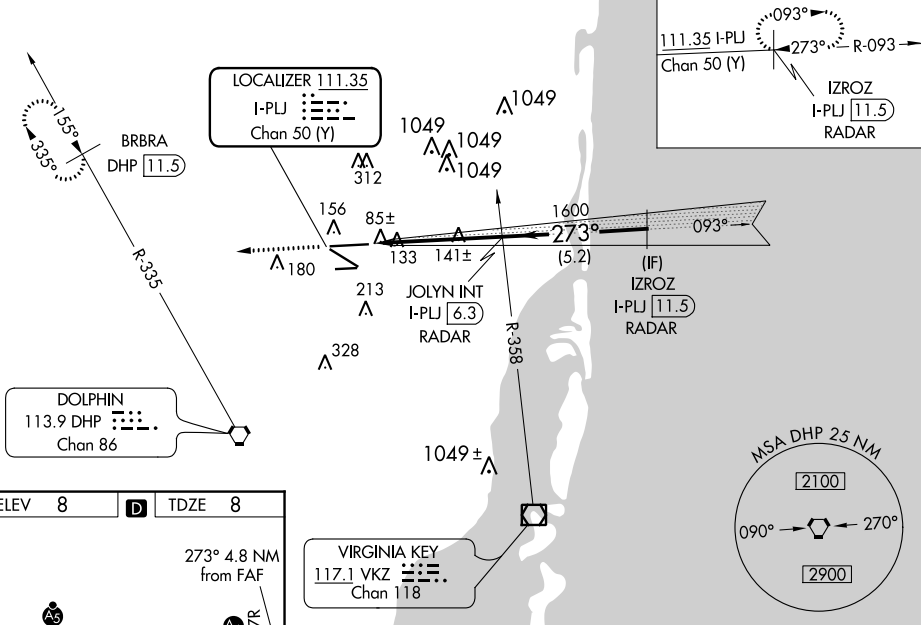


MISSED APPROACH: Climb to 2000 heading 273° and DHP VORTAC R-335 to BRBRA/DHP 11.5 DME and hold.

ATIS 125.9	MIAMI APP CON 128.6 306.975	OPA LOCKA TOWER ★ 134.675 (CTAF) 0	GND CON 120.025	CLNC DEL 119.2	GCO 119.45
----------------------	---------------------------------------	-----------------------------------------------------	---------------------------	--------------------------	----------------------

RADAR REQUIRED

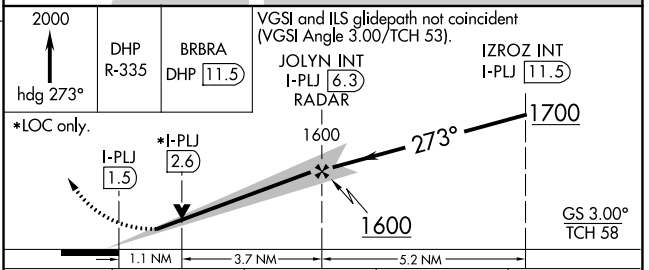
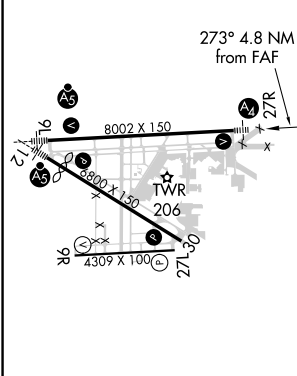
ALTERNATE MISSED APCH FIX



SE-3, 22 FEB 2024 to 21 MAR 2024

SE-3, 22 FEB 2024 to 21 MAR 2024

ELEV 8	D	TDZE 8
--------	----------	--------



MIRL Rwy 9R-27L
HIRL Rwys 9L-27R and 12-30 **0**

FAF to MAP 4.8 NM

Knots	60	90	120	150	180
Min:Sec	4:48	3:12	2:24	1:55	1:36


CATEGORY	A	B	C	D
S-ILS 27R	291-3/4 283 (300-3/4)			
S-LOC 27R	420-3/4	412 (500-3/4)	420-1	412 (500-1)
CIRCLING	540-1	532 (600-1)	620-1 3/4 612 (700-1 3/4)	740-2 1/4 732 (800-2 1/4)

LOC I-OPF 110.5	APP CRS 093°	Rwy Idg 8002 TDZE 8 Apt Elev 8
---------------------------	------------------------	-----------------------------------------------------------

ILS or LOC RWY 9L

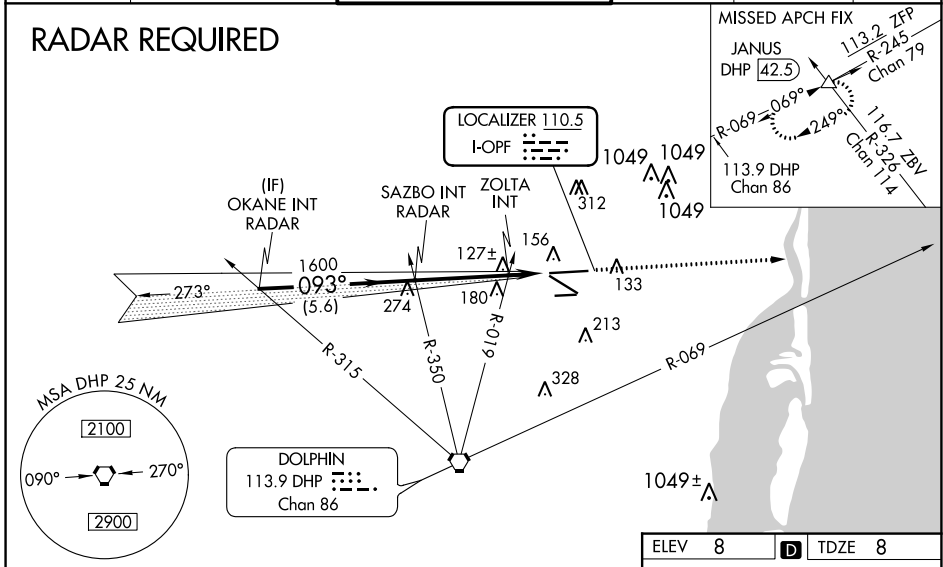
MIAMI-OPA LOCKA EXEC(OPF)

⚠ Inop table does not apply. Helicopter visibility reduction below $\frac{3}{4}$ SM NA.
⚠ Caution: Lights on highway 0.7 NM north may be mistaken for runway.
 When local altimeter setting not received, use Miami Intl altimeter setting and increase all DA/MDA 20 feet and Circling Cat D visibility $\frac{1}{4}$ SM. For inop MALSRL, increase S-LOC 9L Cats A and B visibility to 1 mile and Cats C and D visibility to $1\frac{3}{8}$ miles. ZOLTA Fix Minimums, for inop MALSRL, increase S-LOC 9L all Cats visibility to 1 mile. ZOLTA Fix Minimums, for inop MALSRL, when using Miami Intl altimeter setting, increase Cats A and B visibility to 1 mile and Cats C and D visibility to $1\frac{1}{8}$ miles. For inop MALSRL, when using Miami Intl altimeter setting, increase S-ILS 9L all Cats visibility to $\frac{7}{8}$ mile.

MALSRL

 MISSED APPROACH: Climb to 2000 heading 093° and DHP VORTAC R-069 to JANUS INT/DHP 42.5 DME and hold.

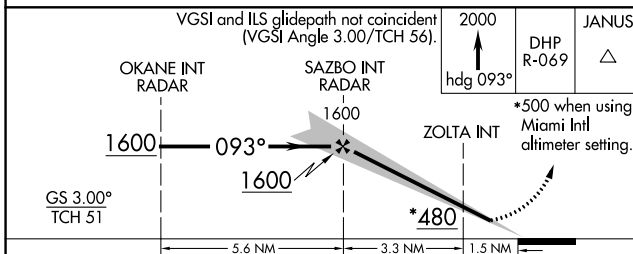
ATIS 125.9	MIAMI APP CON 128.6 306.975	OPA LOCKA TOWER ★ 134.675 (CTAF) 0	GND CON 120.025	CLNC DEL 119.2	GCO 119.45
----------------------	---------------------------------------	----------------------------------------------	---------------------------	--------------------------	----------------------

RADAR REQUIRED



SE-3, 22 FEB 2024 to 21 MAR 2024

SE-3, 22 FEB 2024 to 21 MAR 2024



ELEV 8	TDZE 8
MIRL Rwy 9R-27L	
HIRL Rwys 9L-27R and 12-30	
FAF to MAP 4.8 NM	
Knots	60 90 120 150 180
Min:Sec	4:48 3:12 2:24 1:55 1:36


CATEGORY	A	B	C	D
S-ILS 9L	258- $\frac{3}{4}$		250 (300- $\frac{3}{4}$)	
S-LOC 9L	480- $\frac{3}{4}$ 472 (500- $\frac{3}{4}$)		480-1 472 (500-1)	
CIRCLING	540-1 532 (600-1)		620-1 $\frac{3}{4}$ 740-2 $\frac{1}{4}$ 612 (700-1 $\frac{3}{4}$) 732 (800-2 $\frac{1}{4}$)	
ZOLTA FIX MINIMUMS				
S-LOC 9L	380- $\frac{3}{4}$		372 (400- $\frac{3}{4}$)	
CIRCLING	540-1 532 (600-1)		620-1 $\frac{3}{4}$ 740-2 $\frac{1}{4}$ 612 (700-1 $\frac{3}{4}$) 732 (800-2 $\frac{1}{4}$)	

WAAS CH 69522 W12A	APP CRS 128°	Rwy Idg TDZE Apt Elev	6000 8 8
----------------------------------------	------------------------	-----------------------------	-------------------------------------

RNAV (GPS) RWY 12

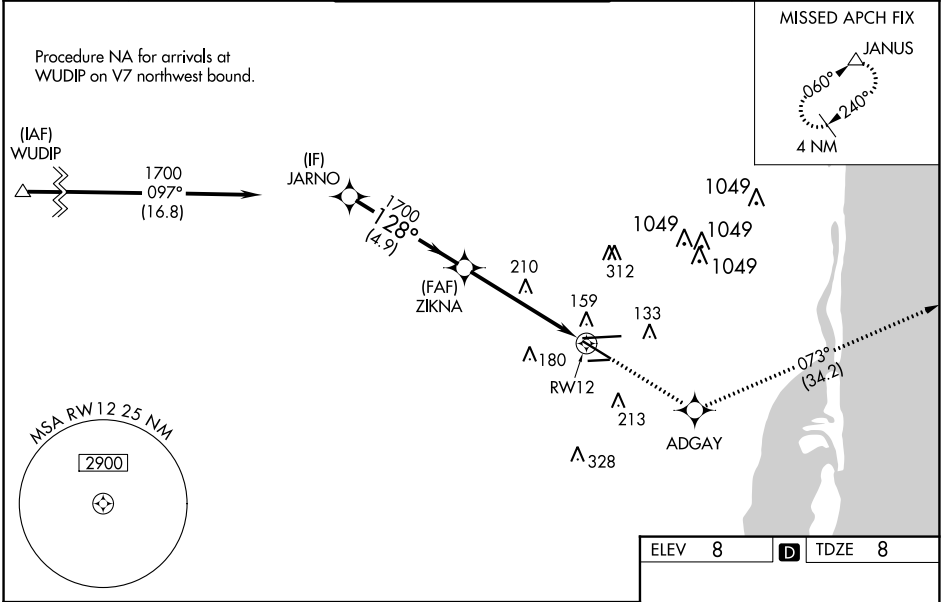
MIAMI-OPA LOCKA EXEC (OPF)

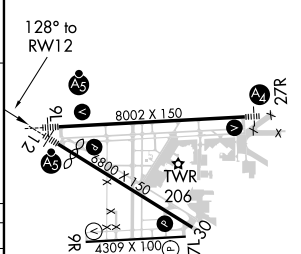
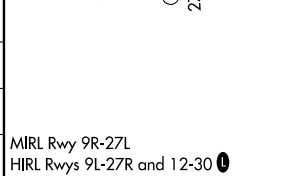

⚠ Baro-VNAV NA when using Miami Intl altimeter setting. For uncompensated Baro-VNAV systems, LNAV/VNAV NA below -1.5°C (5°F) or above 43°C (109°F). Helicopter visibility reduction below 3/4 SM NA. DME/DME RNP-0.3 NA. VDP NA with Miami Intl altimeter setting. When local altimeter setting not received, use Miami Intl altimeter setting and increase all DA/MDA 20 feet and Circling Cat D visibility 1/4 SM. Inop table does not apply. For inop MALSR, increase LNAV/VNAV all Cats visibility and LNAV Cats A and B to 1 mile and LNAV Cats C and D visibility to 1 1/8 miles. For inop MALSR, when using Miami Intl altimeter setting, increase LNAV/VNAV all Cats visibility and LNAV Cats A and B visibility to 1 mile.

MALSR


MISSED APPROACH:
Climb to 2000 direct ADGAY and on track 073° to JANUS and hold.

ATIS 125.9	MIAMI APP CON 128.6 306.975	OPA LOCKA TOWER ★ 134.675 (CTAF) 	GND CON 120.025	CLNC DEL 119.2	GCO 119.45
----------------------	---------------------------------------	------------------------------------------------------------------------------------------------------------------------------	---------------------------	--------------------------	----------------------



ELEV 8		D TDZE 8	
JARNO		ZIKNA	
1700		1700	
GP 3.00° TCH 53		*LNAV only.	
4.9 NM		3.7 NM	
128°		073°	
1700		RW12	
2000		ADGAY	
↑		✧	
*1.5 NM to RW12		tr	
ADGAY		JANUS	
✧		△	
128° to RW12		8002 X 150	
			
CATEGORY	A	B	C
LPV DA		208-3/4	200 (200-3/4)
LNAV/VNAV DA		320-3/4	312 (400-3/4)
LNAV MDA	520-3/4	512 (600-3/4)	520-1 512 (600-1)
CIRCLING	540-1	532 (600-1)	620-1 3/4 612 (700-1 3/4) 740-2 1/4 732 (800-2 1/4)
MIRL Rwy 9R-27L HIRL Rwys 9L-27R and 12-30 			

SE-3, 22 FEB 2024 to 21 MAR 2024


SE-3, 22 FEB 2024 to 21 MAR 2024

WAAS CH 62922 W27A	APP CRS 273°	Rwy Idg 8002 TDZE 8 Apt Elev 8
----------------------------------------	------------------------	-----------------------------------------------------------

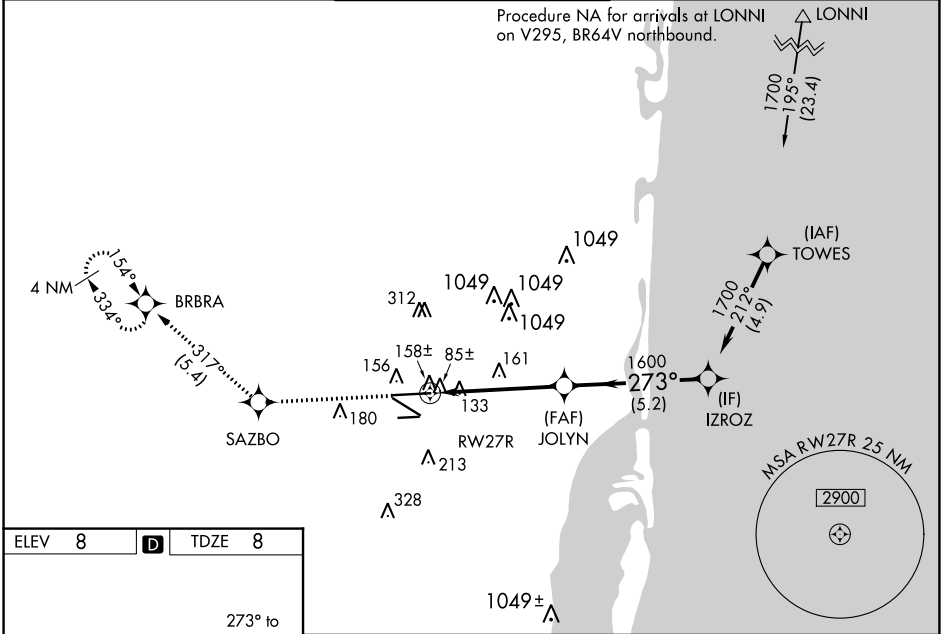
RNAV (GPS) RWY 27R

MIAMI-OPA LOCKA EXEC (OPF)

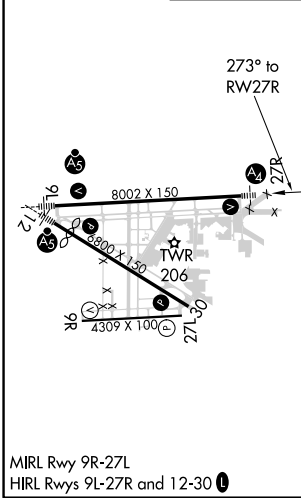
⚠ Baro-VNAV NA when using Miami Intl altimeter setting. For uncompensated Baro-VNAV systems, LNAV/VNAV NA below 5°C (41°F) or above 54°C (130°F). DME/DME RNP-0.3 NA. When local altimeter setting not received, use Miami Intl altimeter setting and increase all DA/MDA 20 feet and Circling Cat D visibility ¼ SM. For inop MALS, increase LPV all Cats visibility to ¾ mile, LNAV/VNAV all Cats to 1¾, and LNAV Cats C and D visibility to 1½ mile. Helicopter visibility reduction below ¾ SM NA.

MALS  MISSED APPROACH: Climb to 2000 direct SAZBO and on track 317° to BRBRA and hold.

ATIS 125.9	MIAMI APP CON 128.6 306.975	OPA LOCKA TOWER ★ 134.675 (CTAF) 0	GND CON 120.025	CLNC DEL 119.2	GCO 119.45
----------------------	---------------------------------------	----------------------------------------------	---------------------------	--------------------------	----------------------



ELEV 8	D	TDZE 8
---------------	----------	---------------



CATEGORY	A	B	C	D
LPV DA		291-¾	283 (300-¾)	
LNAV/VNAV DA		413-1	405 (500-1)	
LNAV MDA	420-¾	412 (500-¾)	420-1	412 (500-1)
CIRCLING	540-1	532 (600-1)	620-1¾ 612 (700-1¾)	740-2¼ 732 (800-2¼)

SE-3, 22 FEB 2024 to 21 MAR 2024

SE-3, 22 FEB 2024 to 21 MAR 2024

WAAS CH 53644 W30A	APP CRS 308°	Rwy Idg TDZE Apt Elev	6800 8 8
----------------------------------------	------------------------	-----------------------------	-------------------------------------

RNAV (GPS) RWY 30

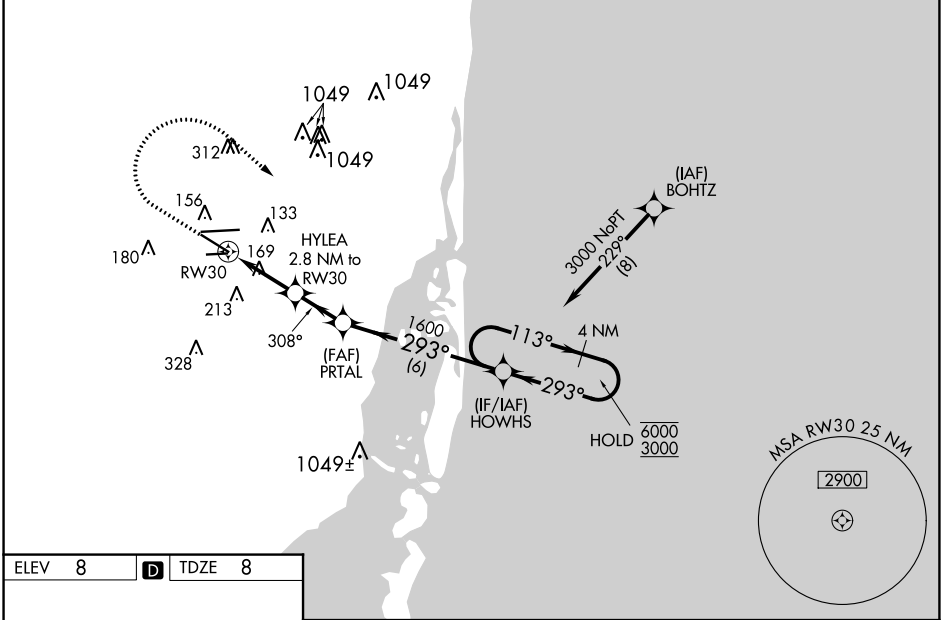
MIAMI-OPA LOCKA EXEC (OPF)

RNP APCH - GPS.

▼ Baro-VNAV and VDP NA when using Miami Intl altimeter setting.
▲ Rwy 30 helicopter visibility reduction below $\frac{3}{4}$ SM NA. For uncompensated Baro-VNAV systems, LNAV/VNAV NA below 7°C or above 54°C. When local altimeter setting not received, use Miami Intl altimeter setting; increase LPV DA to 276 feet and all visibilities $\frac{1}{8}$ SM; increase LNAV/VNAV DA to 438 feet and all visibilities $\frac{1}{8}$ SM; increase all MDAs 20 feet and LNAV visibility Cat C/D $\frac{1}{8}$ SM and Circling visibility Cat D $\frac{1}{4}$ SM.

MISSED APPROACH: Climb to 800 then climbing right turn to 3000 direct HOWHS and hold, continue climb-in-hold to 3000.

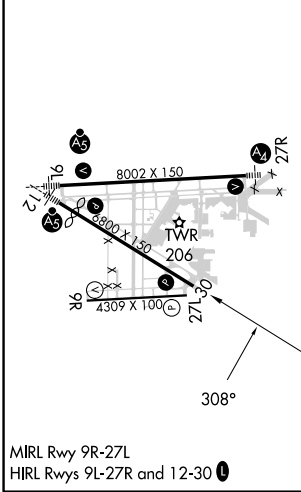
ATIS 125.9	MIAMI APP CON 128.6 306.975	OPA LOCKA TOWER ★ 134.675 (CTAF) 0	GND CON 120.025	CLNC DEL 119.2	GCO 119.45
----------------------	---------------------------------------	----------------------------------------------	---------------------------	--------------------------	----------------------



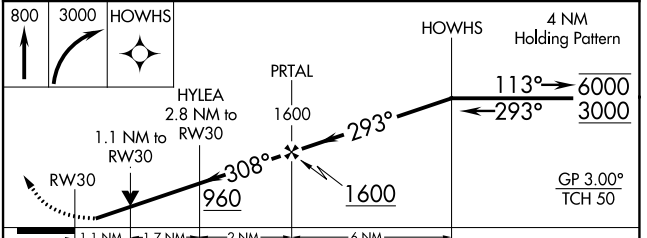
SE-3, 22 FEB 2024 to 21 MAR 2024

SE-3, 22 FEB 2024 to 21 MAR 2024

ELEV 8	D	TDZE 8
--------	----------	--------



MIRL Rwy 9R-27L
 HIRL Rwy 9L-27R and 12-30



CATEGORY	A	B	C	D
LPV DA		258- $\frac{3}{4}$	250 (300- $\frac{3}{4}$)	
LNAV/VNAV DA		420- $\frac{1}{8}$	412 (500- $\frac{1}{8}$)	
LNAV MDA	420-1	412 (500-1)	420- $\frac{1}{8}$	412 (500- $\frac{1}{8}$)
C CIRCLING	480-1 472 (500-1)	520-1 512 (600-1)	620- $\frac{1}{4}$ 612 (700- $\frac{1}{4}$)	740- $\frac{1}{4}$ 732 (800- $\frac{1}{4}$)


WAAS CH 53422 W09A	APP CRS 093°	Rwy Idg 8002 TDZE 8 Apt Elev 8
----------------------------------------	------------------------	-----------------------------------------------------------

RNAV (GPS) RWY 9L

MIAMI-OPA LOCKA EXEC (OPF)

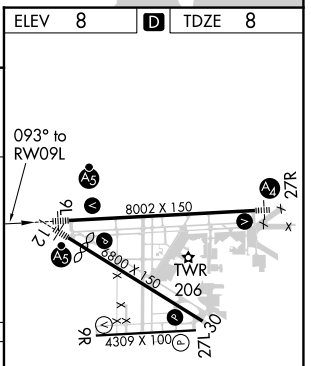
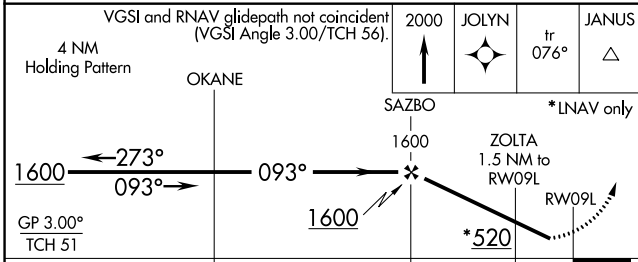
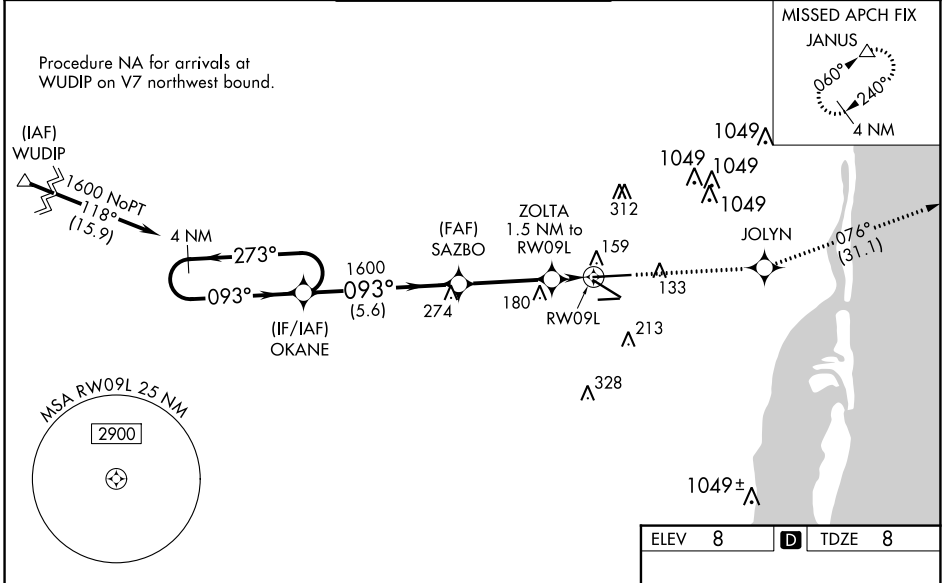
⚠ Baro-VNAV NA when using Miami Intl altimeter setting. For uncompensated Baro-VNAV systems, LNAV/VNAV NA below -15°C (5°F) or above 43°C (109°F). DME/DME RNP-0.3 NA. Helicopter visibility reduction below 3/4 SM NA. When local altimeter setting not received, use Miami Intl altimeter setting and increase all DA/MDA 20 feet and Circling Cat D visibility 1/4 SM. For inop MALSRL, increase LNAV/VNAV all Cats visibility to 1 mile, LNAV Cats A and B visibility to 1 mile and Cats C and D visibility to 1 1/2 miles. For inop MALSRL, when using Miami Intl altimeter setting, increase LPV all Cats visibility to 3/8 mile, LNAV/VNAV all Cats visibility to 1 1/2 miles and LNAV Cats A and B visibility to 1 mile. Inop table does not apply to LPV all Cats. Caution: Lights on highway 0.7 NM north may be mistaken for runway.

MALSRL



MISSED APPROACH:
Climb to 2000 direct JOLYN and on track 076° to JANUS and hold.

ATIS 125.9	MIAMI APP CON 128.6 306.975	OPA LOCKA TOWER * 134.675 (CTAF) 0	GND CON 120.025	CLNC DEL 119.2	GCO 119.45
----------------------	---------------------------------------	----------------------------------------------	---------------------------	--------------------------	----------------------



	5.6 NM		3.3 NM		1.5 NM	
CATEGORY	A		B		C	
LPV DA	258-3/4		250 (300-3/4)			
LNAV/VNAV DA	321-3/4		313 (400-3/4)			
LNAV MDA	420-3/4		412 (500-3/4)			
CIRCLING	540-1 532 (600-1)		620-1 3/4 612 (700-1 3/4)		740-2 1/4 732 (800-2 1/4)	

MIRL Rwy 9R-27L
HIRL Rlys 9L-27R and 12-30 0

SE-3, 22 FEB 2024 to 21 MAR 2024

SE-3, 22 FEB 2024 to 21 MAR 2024