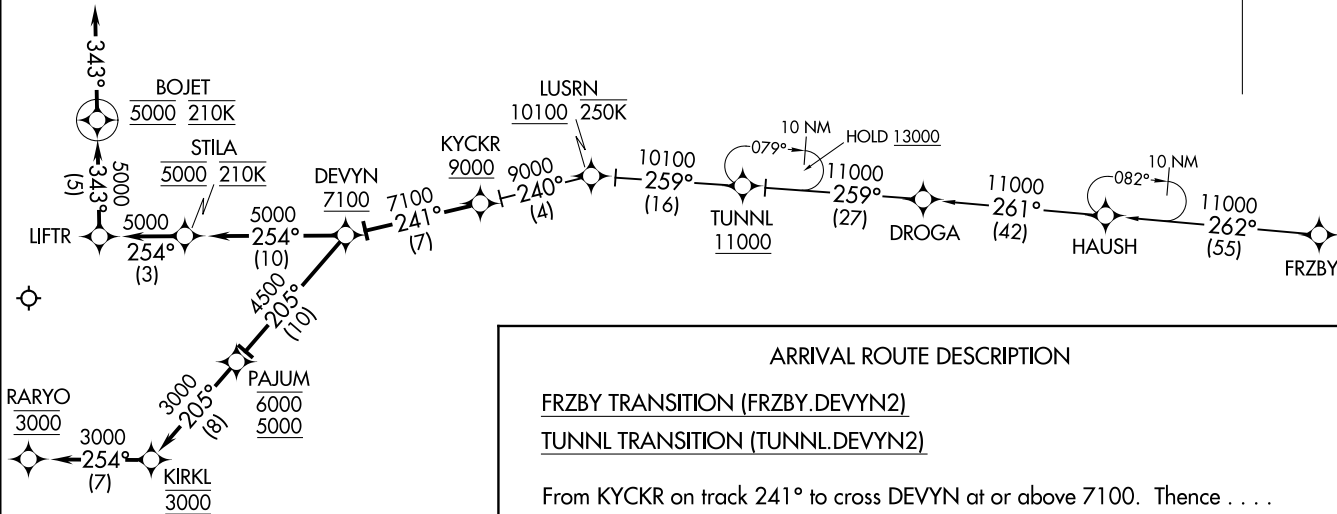


DEVYN TWO ARRIVAL (RNAV)
(KYCKR.DEVYN2) 07/DEC17

(KYCKR.DEVYN2) 23278
DEVYN TWO ARRIVAL (RNAV)

SEATTLE APP CON
128.5 306.9
ATIS
128.65

NOTE: RADAR required.
NOTE: RNAV 1.
NOTE: DME/DME/IRU or GPS required.
NOTE: FRZBY TRANSITION: For non-GPS equipped aircraft, MWH, GEG and OLM DMEs must be operational.
NOTE: TUNNLL TRANSITION ATC assigned only.



ARRIVAL ROUTE DESCRIPTION

FRZBY TRANSITION (FRZBY.DEVYN2)

TUNNLL TRANSITION (TUNNLL.DEVYN2)

From KYCKR on track 241° to cross DEVYN at or above 7100. Thence . . .

LANDING RUNWAY 16R: From DEVYN on track 254° to cross STILA at 5000 and at 210K, then on track 254° to LIFTR, then on track 343° to cross BOJET at 5000 and at 210K, then on heading 343° or as assigned by ATC. Expect RADAR vectors to final approach course.

LANDING RUNWAY 34L: From DEVYN on track 205° to cross PAJUM between 5000 and 6000, then on track 205° to cross KIRKL at 3000, then on track 254° to cross RARYO at 3000. Expect RNAV (GPS) RWY 34L approach.

NOTE: Chart not to scale.

EVERETT, WASHINGTON
SEATTLE PAINE FLD INTL (PAE)

SEATTLE PAINE FLD INTL (PAE)
EVERETT, WASHINGTON

CHINS FIVE ARRIVAL
(CHINS, CHINS5) 08SEP22

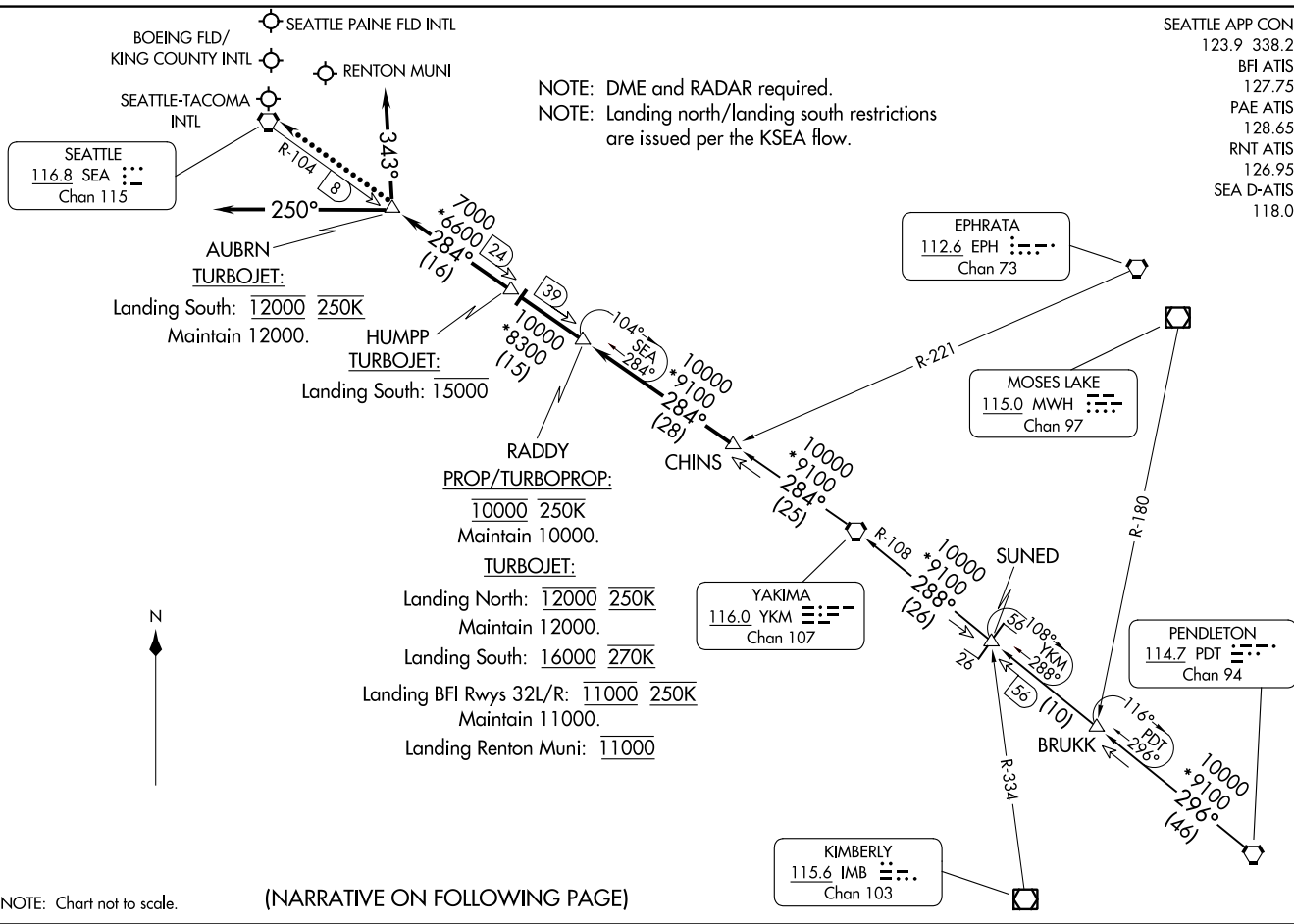
(CHINS, CHINS5) 23278
CHINS FIVE ARRIVAL

AL-582 (FAA)

SEATTLE, WASHINGTON

SEATTLE APP CON
123.9 338.2
BFI ATIS
127.75
PAE ATIS
128.65
RNT ATIS
126.95
SEA D-ATIS
118.0

NOTE: DME and RADAR required.
NOTE: Landing north/landing south restrictions
are issued per the KSEA flow.



SEATTLE, WASHINGTON

ARRIVAL ROUTE DESCRIPTION

PENDLETON TRANSITION (PDT.CHINS5): From over PDT VORTAC on PDT R-296 to BRUKK, then on PDT R-296 to SUNED, then on YKM R-108 to YKM VORTAC, then on YKM R-284 to CHINS, thence

SUNED TRANSITION (SUNED.CHINS5): From SUNED on YKM R-108 to YKM VORTAC, then on YKM R-284 to CHINS, thence

YAKIMA TRANSITION (YKM.CHINS5): From over YKM VORTAC on YKM R-284 to CHINS, thence

. . . . from CHINS on YKM R-284 and SEA R-104 to RADDY, then on SEA R-104 to HUMPP, then on SEA R-104 to AUBRN, thence

LANDING NORTH: Heading 250° for vectors to final approach course.

LANDING SOUTH: Heading 343° for vectors to final approach course.

LANDING RENTON MUNI: Heading 343° for vectors to final approach course.

LANDING SEATTLE PAINE FLD INTL: Heading 343° for vectors to final approach course.

LOST COMMUNICATIONS: After AUBRN proceed direct SEA VORTAC.

NW-1, 22 FEB 2024 to 21 MAR 2024

NW-1, 22 FEB 2024 to 21 MAR 2024

OLYMPIA TWO ARRIVAL

AL-582 (FAA)

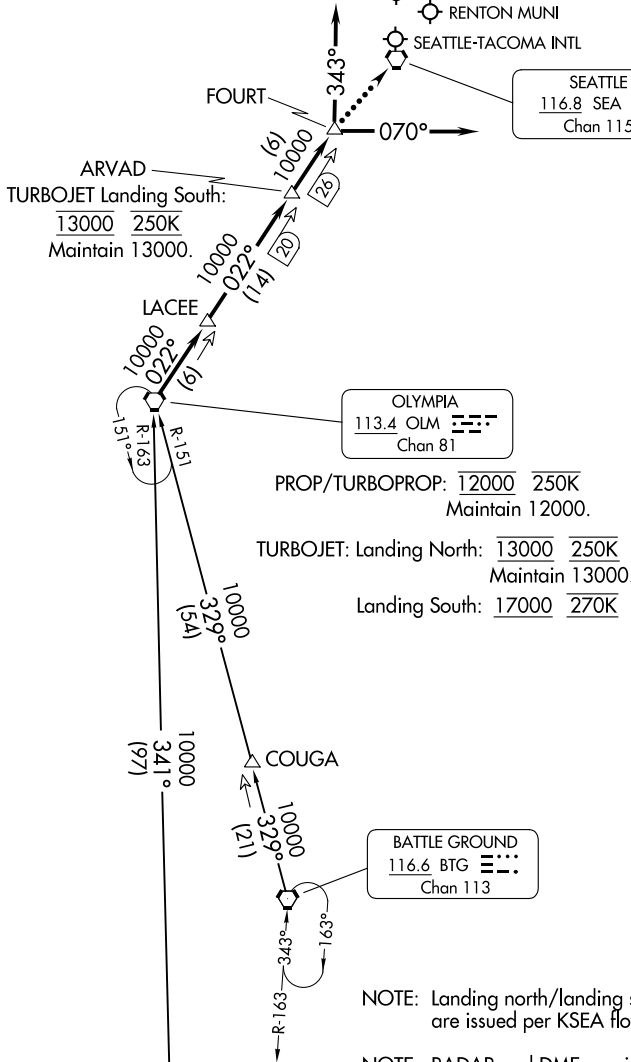
SEATTLE, WASHINGTON

SEATTLE APP CON
 125.6 273.45
 BFI ATIS
 127.75
 PAE ATIS
 128.65
 RTN ATIS
 126.95
 SEA D-ATIS
 118.0

SEATTLE PAINE FLD INTL

BOEING FLD/
 KING COUNTY INTL
 RENTON MUNI
 SEATTLE-TACOMA INTL

SEATTLE
 116.8 SEA
 Chan 115



ARVAD
 TURBOJET Landing South:
 13000 250K
 Maintain 13000.

PROP/TURBOPROP: 12000 250K
 Maintain 12000.

TURBOJET: Landing North: 13000 250K
 Maintain 13000.
 Landing South: 17000 270K

BATTLE GROUND
 116.6 BTG
 Chan 113

NEWBERG
 117.4 UBG
 Chan 121

NOTE: Landing north/landing south restrictions
 are issued per KSEA flow.

NOTE: RADAR and DME required.

(NARRATIVE ON FOLLOWING PAGE)

NOTE: Chart not to scale.

NW-1, 22 FEB 2024 to 21 MAR 2024

NW-1, 22 FEB 2024 to 21 MAR 2024

OLYMPIA TWO ARRIVAL

SEATTLE, WASHINGTON

ARRIVAL ROUTE DESCRIPTION

BATTLE GROUND TRANSITION (BTG.OLM2): From over BTG VORTAC on BTG R-329 to COUGA, then on BTG R-329 and OLM R-151 to OLM VORTAC. Thence. . . .

NEWBERG TRANSITION (UBG.OLM2): From over UBG VOR/DME on UBG R-341 and OLM R-163 to OLM VORTAC. Thence. . . .

. . . . from over OLM VORTAC on OLM R-022 to LACEE, then on OLM R-022 to ARVAD, then on OLM R-022 to FOURT, thence. . . .

. . . . LANDING NORTH SEA/BFI: Depart FOURT heading 070° for vectors to final approach course.

. . . . LANDING SOUTH SEA/BFI: Depart FOURT heading 343° for vectors to final approach course.

. . . . LANDING SEATTLE PAINE FLD INTL: Depart FOURT heading 343° for vectors to final approach course.

. . . . LANDING RENTON MUNI: Depart FOURT heading 343° for vectors to final approach course.

LOST COMMUNICATIONS: From over FOURT, proceed direct SEA VORTAC.

NW-1, 22 FEB 2024 to 21 MAR 2024

NW-1, 22 FEB 2024 to 21 MAR 2024