

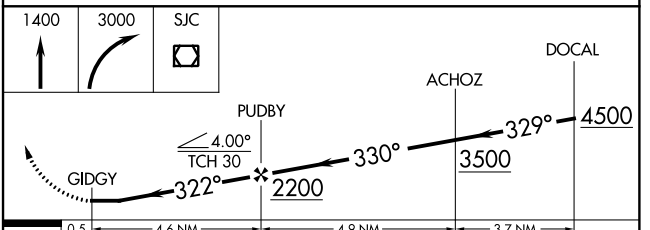
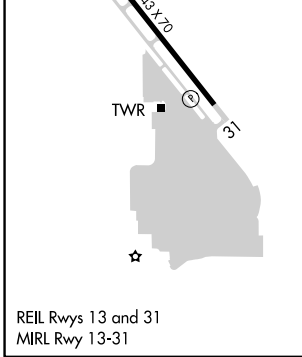
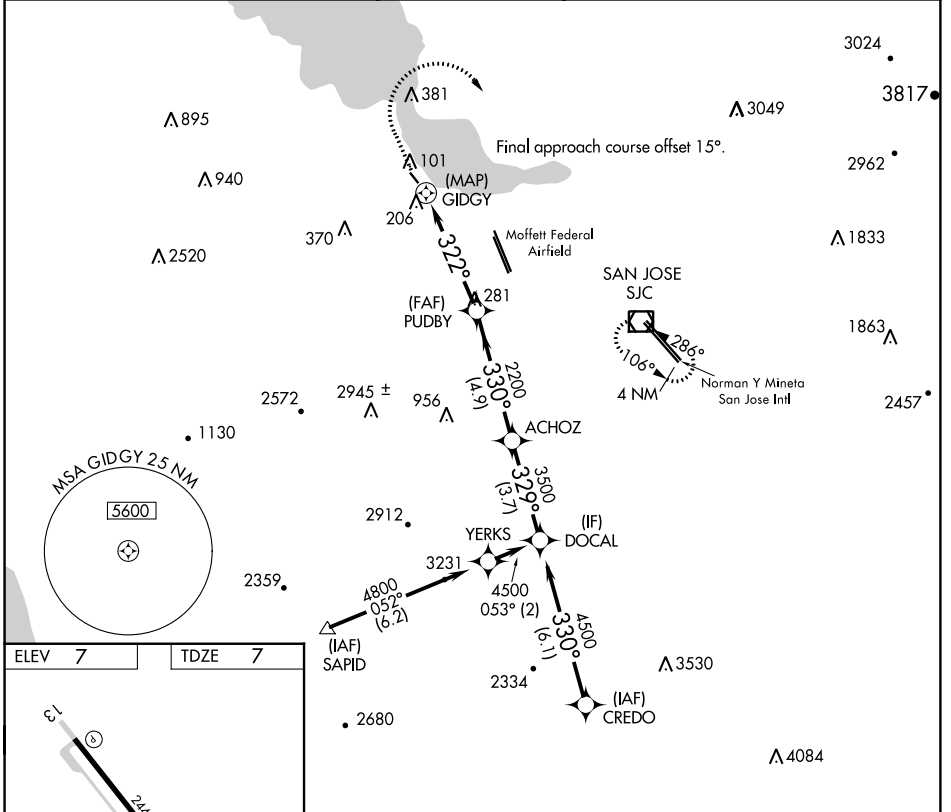
APP CRS	Rwy Idg	2443
322°	TDZE	7
	Apt Elev	7

RNAV (GPS) RWY 31

PALO ALTO (PAO)

RNP APCH	Circling NA southwest of Rwy 13-31. Rwy 31 helicopter visibility reduction below 1 SM NA. Procedure NA at night. When control tower closed, use Norman Y Mineta San Jose Intl altimeter setting and increase all MDAs 40 feet.		MISSED APPROACH: Climb to 1400 then climbing right turn to 3000 direct SJC VOR/DME and hold.	
----------	--	--	--	--

ATIS	NORCAL APP CON	PALO ALTO TOWER*	GND CON	UNICOM
135.275	121.3 270.35	118.6 (CTAF)	125.0	122.95



CATEGORY	A	B	C	D
LNAV MDA	460-1	453 (500-1)	NA	
<input checked="" type="checkbox"/> CIRCLING	460-1	520-1	NA	
	453 (500-1)	513 (600-1)		

SW-2, 27 FEB 2020 to 26 MAR 2020

SW-2, 27 FEB 2020 to 26 MAR 2020

VOR/DME SJC 114.1 Chan 88	APP CRS 286°	Rwy Idg TDZE Apt Elev 2443 7 7
---	------------------------	--

VOR RWY 31

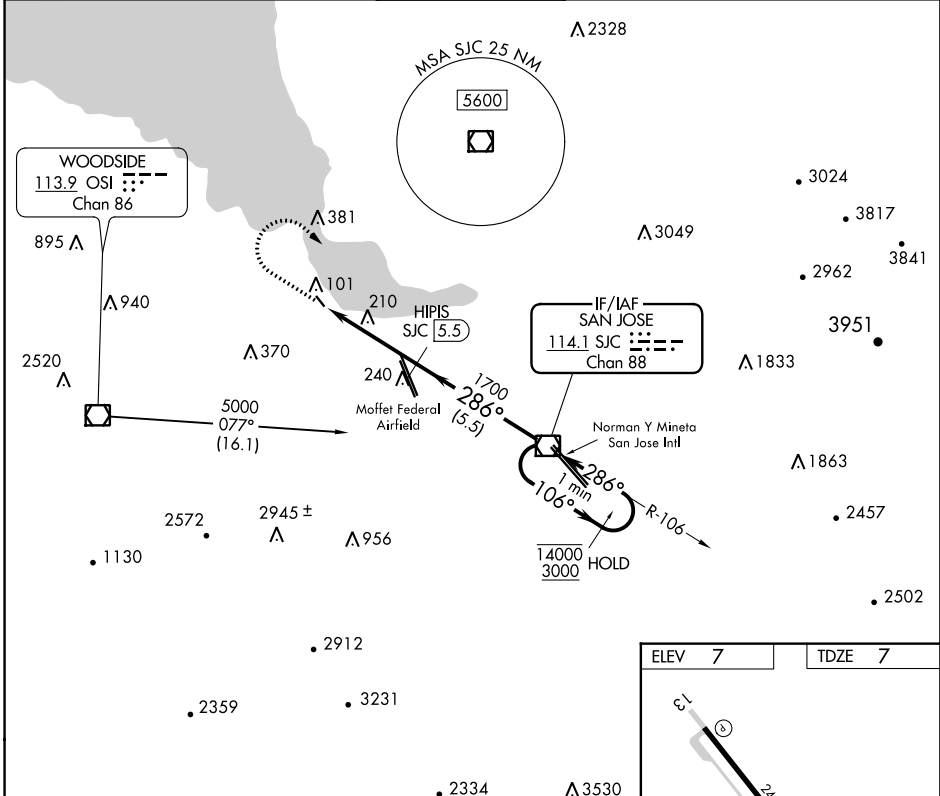
PALO ALTO (PAO)

DME Required

⚠ Circling NA southwest of Rwy 13-31. Rwy 31 helicopter visibility reduction below 1 SM NA. When control tower closed, use Norman Y Mineta San Jose Intl altimeter setting and increase all MDAs 40 feet. Procedure NA at night.

MISSED APPROACH: Climb to 1000 then climbing right turn to 3000 direct SJC VOR/DME and hold.

ATIS 135.275	NORCAL APP CON 121.3 270.35	PALO ALTO TOWER* 118.6 (CTAF)	GND CON 125.0	UNICOM 122.95
------------------------	---------------------------------------	--	-------------------------	-------------------------



SW-2, 27 FEB 2020 to 26 MAR 2020

SW-2, 27 FEB 2020 to 26 MAR 2020

1000	3000	SJC	
↑	↷	☐	
SJC VOR/DME		One Minute Holding Pattern	
CATEGORY	A	B	C
S-31	480-1	473 (500-1)	NA
CIRCLING	480-1	520-1	NA
	473 (500-1)	513 (600-1)	

