

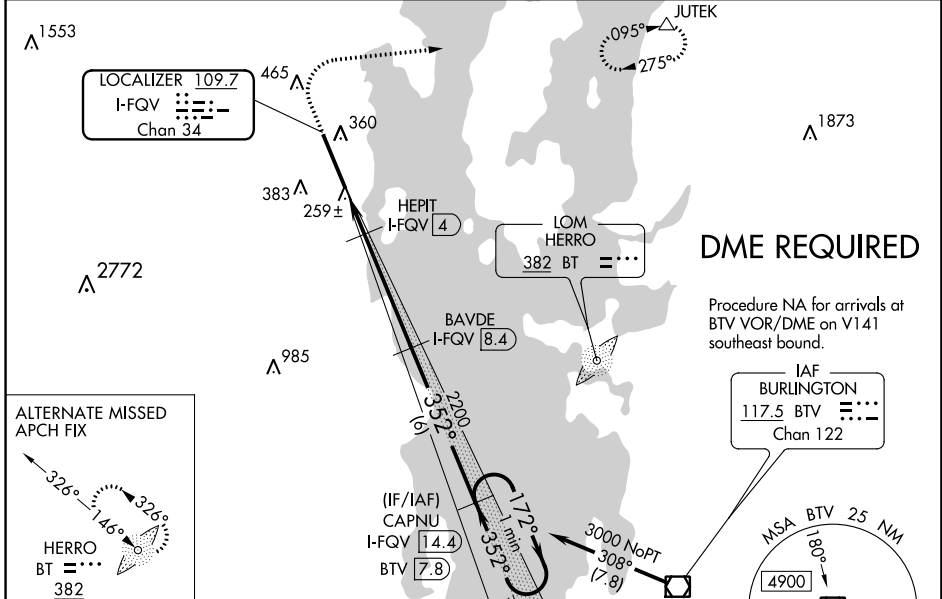
LOC/DME I-FQV 109.7 Chan 34	APP CRS 352°	Rwy ldg TDZE 177 Apt Elev 234	11759
---	------------------------	---	--------------

ILS or LOC RWY 35

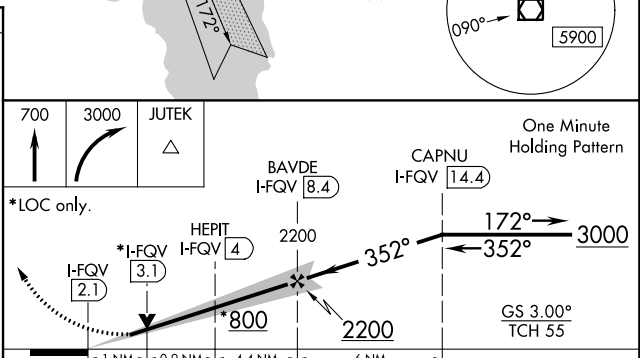
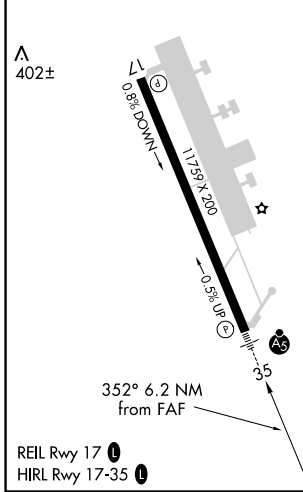
PLATTSBURGH INTL (PBG)

 RNAV 1-GPS required.	MALSR 	MISSED APPROACH: Climb to 700 then climbing right turn to 3000 direct JUTEK and hold.

ASOS 132.225	BURLINGTON APP CON * 121.1 278.8	CLNC DEL 121.85	UNICOM 122.7 (CTAF)
------------------------	--	---------------------------	-------------------------------



ELEV 234	TDZE 177
-----------------	-----------------



CATEGORY	A	B	C	D
S-ILS 35	377-1/2		200 (200-1/2)	
S-LOC 35	520-1/2	343 (300-1/2)	520-5/8	343 (300-5/8)
CIRCLING	720-1 486 (500-1)	740-1 506 (600-1)	800-1 1/2 566 (600-1 1/2)	960-2 1/4 726 (800-2 1/4)

NE-2, 15 AUG 2019 to 12 SEP 2019

NE-2, 15 AUG 2019 to 12 SEP 2019

WAAS CH 40402 W17A	APP CRS 172°	Rwy Idg TDZE 234 Apt Elev 234	11759
--	------------------------	---	--------------

RNAV (GPS) RWY 17

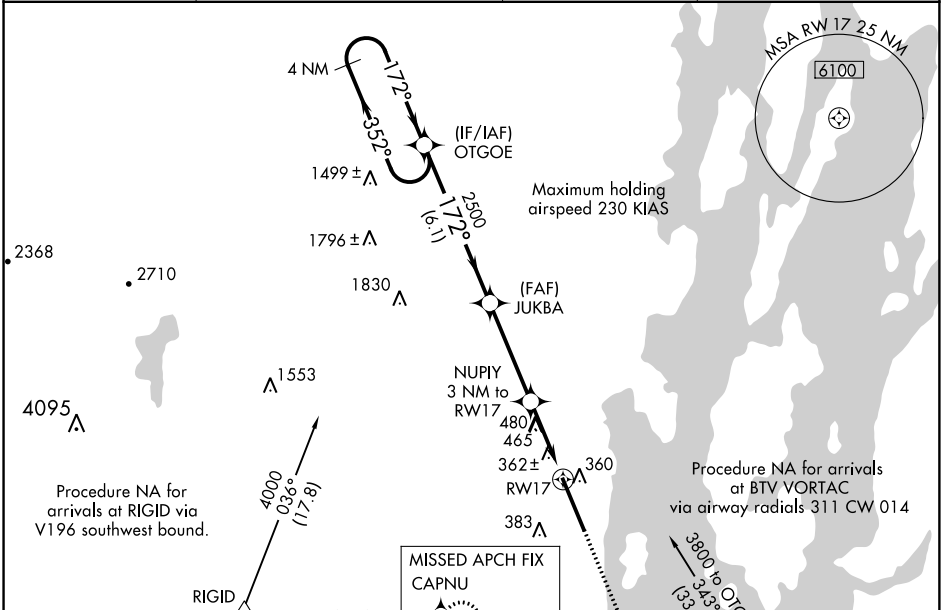
PLATTSBURGH INTL (PBG)

NA When local altimeter setting not received, use Burlington Intl altimeter setting and increase all DA 54 feet, all MDA 60 feet, LPV all Cats visibility ¼ mile, LNAV/VNAV all Cats visibility ½ mile, LNAV Cats C, D and E visibility ¼ mile and Circling Cat C visibility ¼ mile. VDP NA when using Burlington Intl altimeter setting. Baro-VNAV NA. DME/DME RNP-0.3 NA. Helicopter visibility reduction below ¾ SM NA.

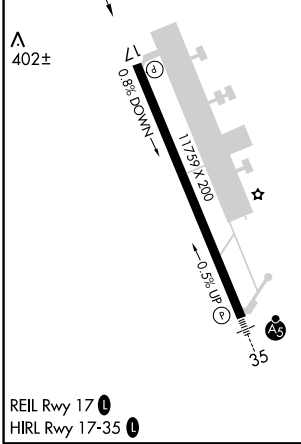
ALSF-1

MISSED APPROACH: Climb to 3100 direct CAPNU and hold.

ASOS 132.225	BURLINGTON APP CON * 121.1 278.8	CLNC DEL 121.85	UNICOM 122.7 (CTAF)
------------------------	--	---------------------------	-------------------------------



ELEV	234	TDZE	234
------	-----	------	-----



4 NM Holding Pattern

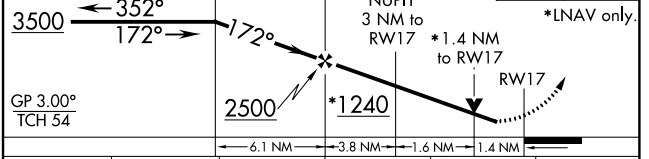
OTGOE

JUKBA

NUPIY 3 NM to RWY 17

3100 CAPNU

*LNAV only.



CATEGORY	A	B	C	D	E
LPV DA	561-1 327 (400-1)				
LNAV/VNAV DA	706-1 5/8 472 (500-1 5/8)				
LNAV MDA	740-1	506 (600-1)	740-1 3/8	506 (600-1 3/8)	
CIRCLING	740-1	506 (600-1)	780-1 1/2 546 (600-1 1/2)	800-2 566 (600-2)	980-2 3/4 746 (800-2 3/4)

NE-2, 15 AUG 2019 to 12 SEP 2019


NE-2, 15 AUG 2019 to 12 SEP 2019

WAAS CH 78003 W35A	APP CRS 353°	Rwy ldg TDZE 177 Apt Elev 234	11759
---------------------------------	------------------------	---	--------------

RNAV (GPS) RWY 35

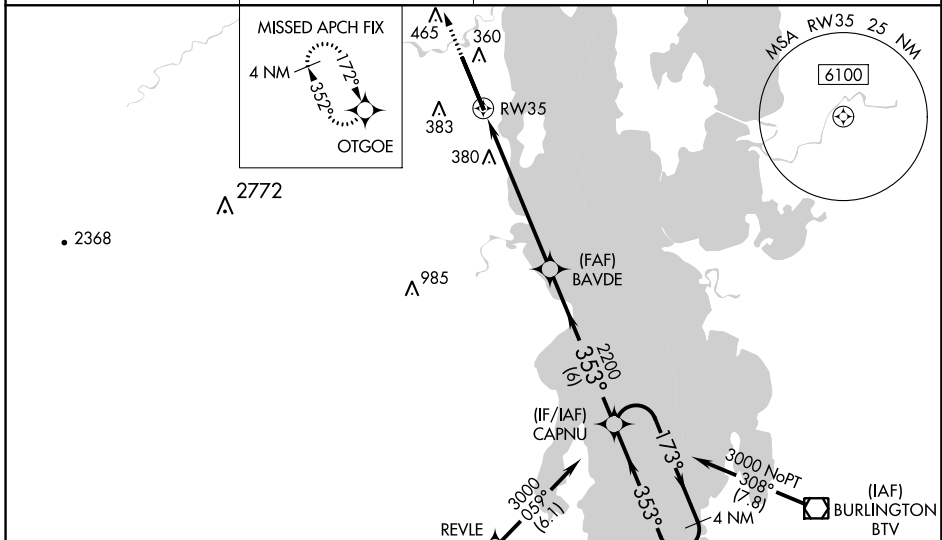
PLATTSBURGH INTL (PBG)

⚠ For uncompensated Baro-VNAV systems, LNAV/VNAV NA below -18°C (0°F) or above 54°C (130°F). DME/DME RNP-0.3 NA. For inop MALSR, increase LPV and LNAV/VNAV all Cats visibility to ¾ mile. For inop MALSR when using Burlington altimeter setting, increase LPV and LNAV/VNAV all Cats visibility to 1 mile. When local altimeter setting not received, use Burlington altimeter setting and increase all DA 54 feet and all MDA 60 feet; increase LPV and LNAV/VNAV all Cats visibility to ¾ mile, LNAV Cats C, D visibility to 1¼ mile, and increase Circling Cats C/D visibility ¼ mile. VDP and Baro-VNAV NA when using Burlington Intl altimeter setting.

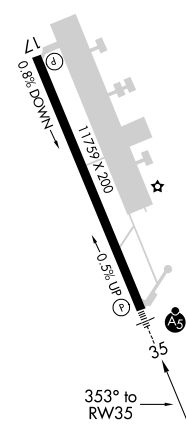
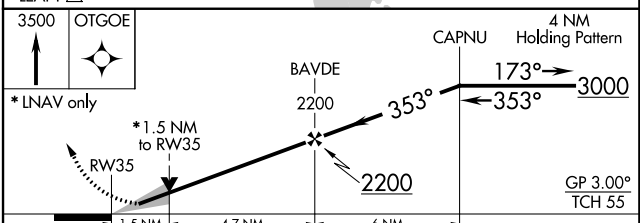
MALSR


MISSED APPROACH: Climb to 3500 direct OTGOE and hold, continue climb-in-hold to 3500.

ASOS 132.225	BURLINGTON APP CON ★ 121.1 278.8	CLNC DEL 121.85	UNICOM 122.7 (CTAF) 0
------------------------	--	---------------------------	---------------------------------



ELEV 234	D TDZE 177
----------	-------------------

CATEGORY	A	B	C	D
LPV DA		427-½	250 (200-½)	
LNAV/VNAV DA		434-½	257 (200-½)	
LNAV MDA	700-½	523 (500-½)	700-1	523 (500-1)
C CIRCLING	720-1 486 (600-1)	740-1 506 (600-1)	800-1½ 566 (700-1½)	960-2¼ 726 (800-2¼)

NE-2: 15 AUG 2019 to 12 SEP 2019

NE-2: 15 AUG 2019 to 12 SEP 2019