

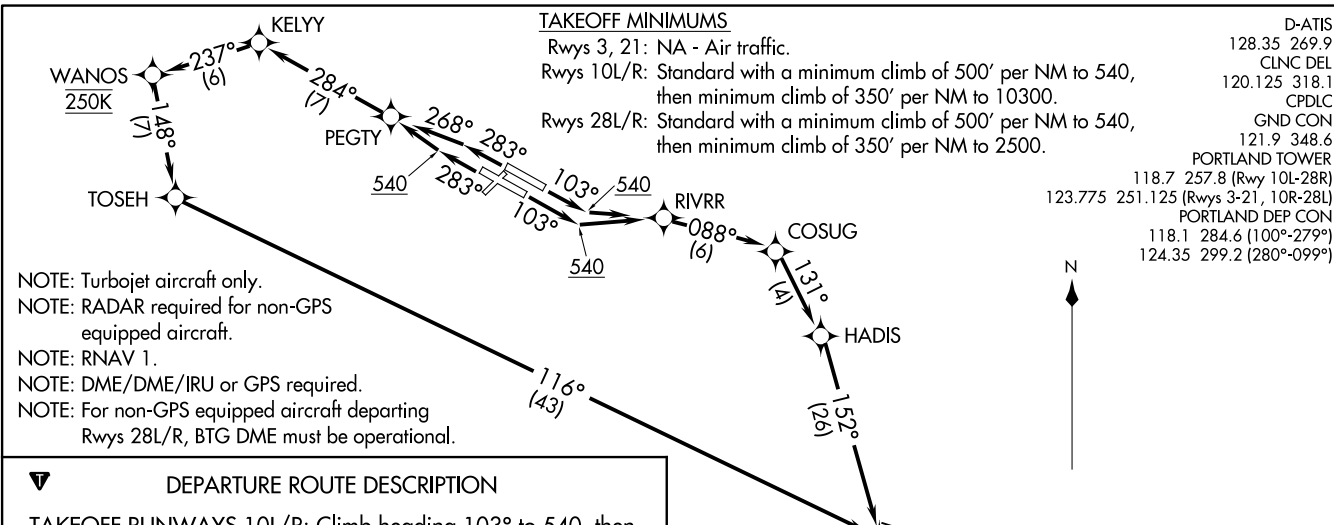
CASCADE TWO DEPARTURE (RNAV)
 (CASCD2.CHISM) 13NOV14

(CASCD2.CHISM) 17341
 CASCADE TWO DEPARTURE (RNAV)

D-ATIS
 128.35 269.9
 CLNC DEL
 120.125 318.1
 CPDLC
 GND CON
 121.9 348.6
 PORTLAND TOWER
 118.7 257.8 (Rwy 10L-28R)
 123.775 251.125 (Rwys 3-21, 10R-28L)
 PORTLAND DEP CON
 118.1 284.6 (100°-279°)
 124.35 299.2 (280°-099°)

TAKEOFF MINIMUMS

Rwys 3, 21: NA - Air traffic.
 Rwys 10L/R: Standard with a minimum climb of 500' per NM to 540, then minimum climb of 350' per NM to 10300.
 Rwys 28L/R: Standard with a minimum climb of 500' per NM to 540, then minimum climb of 350' per NM to 2500.



- NOTE: Turbojet aircraft only.
- NOTE: RADAR required for non-GPS equipped aircraft.
- NOTE: RNAV 1.
- NOTE: DME/DME/IRU or GPS required.
- NOTE: For non-GPS equipped aircraft departing Rwys 28L/R, BTG DME must be operational.

DEPARTURE ROUTE DESCRIPTION

TAKEOFF RUNWAYS 10L/R: Climb heading 103° to 540, then direct to RIVRR, then on depicted route to CHISM, thence. . . .
TAKEOFF RUNWAY 28L: Climb heading 283° to 540, then direct PEGTY, then on depicted route to CHISM, thence. . . .
TAKEOFF RUNWAY 28R: Climb heading 283°, intercept course 268° to PEGTY, then on depicted route to CHISM, thence. . . .
 . . . via (transition), maintain assigned altitude, expect filed altitude 10 minutes after departure.

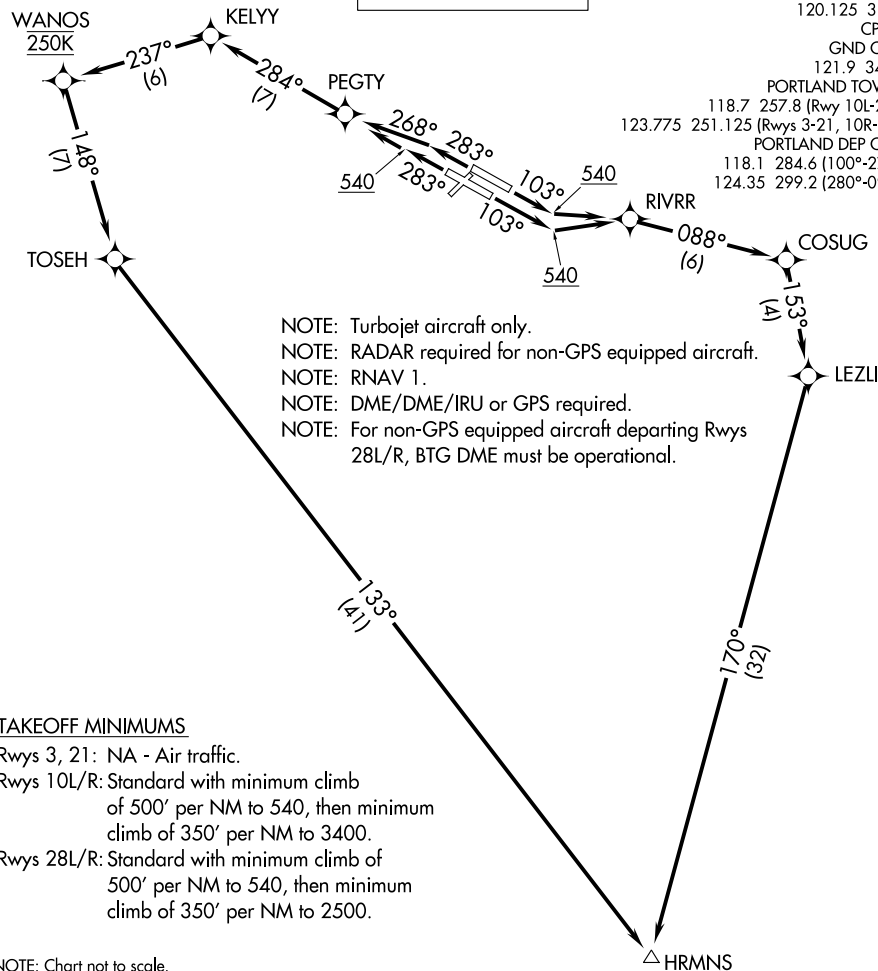
- DESCHUTES TRANSITION (CASCD2.DSD)
- JOGEN TRANSITION (CASCD2.JOGEN)
- PAWLI TRANSITION (CASCD2.PAWLI)
- SMIGE TRANSITION (CASCD2.SMIGE)

NOTE: Chart not to scale.

PORTLAND, OREGON
 PORTLAND INTL (PDX)

PORTLAND INTL (PDX)
 PORTLAND, OREGON

**TOP ALTITUDE:
ASSIGNED BY ATC**



D-ATIS
128.35 269.9
CLNC DEL
120.125 318.1
CPDLC
GND CON
121.9 348.6
PORTLAND TOWER
118.7 257.8 (Rwy 10L-28R)
123.775 251.125 (Rwys 3-21, 10R-28L)
PORTLAND DEP CON
118.1 284.6 (100°-279°)
124.35 299.2 (280°-099°)

- NOTE: Turbojet aircraft only.
- NOTE: RADAR required for non-GPS equipped aircraft.
- NOTE: RNAV 1.
- NOTE: DME/DME/IRU or GPS required.
- NOTE: For non-GPS equipped aircraft departing Rwys 28L/R, BTG DME must be operational.

TAKEOFF MINIMUMS

Rwys 3, 21: NA - Air traffic.
Rwys 10L/R: Standard with minimum climb of 500' per NM to 540, then minimum climb of 350' per NM to 3400.
Rwys 28L/R: Standard with minimum climb of 500' per NM to 540, then minimum climb of 350' per NM to 2500.

NOTE: Chart not to scale.

DEPARTURE ROUTE DESCRIPTION

TAKEOFF RUNWAYS 10L/R: Climb heading 103° to 540, then direct to RIVRR, then on depicted route to HRMNS, thence. . . .

TAKEOFF RUNWAY 28L: Climb heading 283° to 540, then direct PEGTY, then on depicted route to HRMNS, thence. . . .

TAKEOFF RUNWAY 28R: Climb heading 283°, intercept course 268° to PEGTY, then on depicted route to HRMNS, thence. . . .

. . . .maintain assigned altitude, expect filed altitude 10 minutes after departure.

NW-1, 22 FEB 2024 to 21 MAR 2024

NW-1, 22 FEB 2024 to 21 MAR 2024

DEPARTURE ROUTE DESCRIPTION

TAKEOFF RUNWAYS 10L/R: Climb heading 103° to 540, then direct to RIVRR, then on depicted route to LAVAA, thence. . .

TAKEOFF RUNWAY 28L: Climb heading 283° to 540, then direct PEGTY, then on depicted route to LAVAA, thence. . .

TAKEOFF RUNWAY 28R: Climb heading 283°, intercept course 268° to PEGTY, then on depicted route to LAVAA, thence. . .

. . . via (Transition), maintain assigned altitude, expect filed altitude 10 minutes after departure.

PENDLETON TRANSITION (LAVAA6.PDT)

YAKIMA TRANSITION (LAVAA6.YKM)

NOTE: Turbojet aircraft only.

NOTE: RADAR required for non-GPS equipped aircraft.

NOTE: RNAV 1.

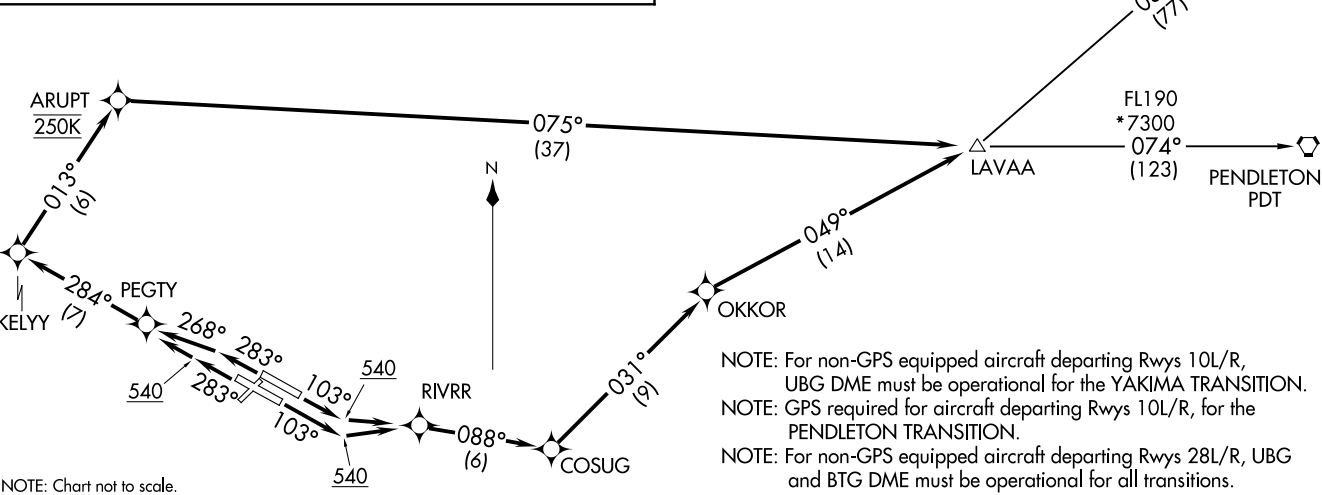
NOTE: DME/DME/IRU or GPS required.

TAKEOFF MINIMUMS

Rwys 3, 21: NA - ATC

Rwys 10L/R, 28L/R: Standard with minimum climb of 500' per NM to 540, then minimum climb of 350' per NM to FL190.

D-ATIS
128.35 269.9
CLNC DEL
120.125 318.1
CPDLC
GND CON
121.9 348.6
PORTLAND TOWER
118.7 257.8 (Rwy 10L-28R)
123.775 251.125 (Rwys 3-21, 10R-28L)
PORTLAND DEP CON
124.35 299.2



NOTE: Chart not to scale.

NOTE: For non-GPS equipped aircraft departing Rwys 10L/R, UBG DME must be operational for the YAKIMA TRANSITION.

NOTE: GPS required for aircraft departing Rwys 10L/R, for the PENDLETON TRANSITION.

NOTE: For non-GPS equipped aircraft departing Rwys 28L/R, UBG and BTG DME must be operational for all transitions.

LAVAA SIX DEPARTURE (RNAV)
(LAVAA6.LAVAA) 08JAN15

(LAVAA6.LAVAA) 21056
LAVAA SIX DEPARTURE (RNAV)

PORTLAND, OREGON
PORTLAND INTL (PDX)

PORTLAND INTL (PDX)
PORTLAND, OREGON

A-330 (FAA)

(MINNE5.MINNE) 17341

MINNE FIVE DEPARTURE (RNAV)

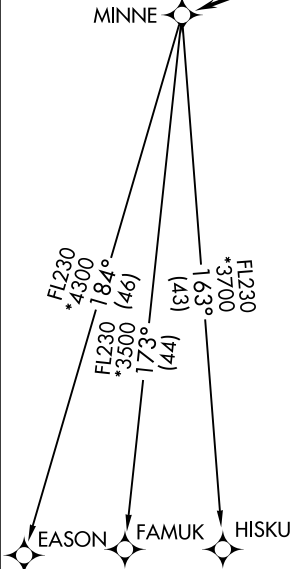
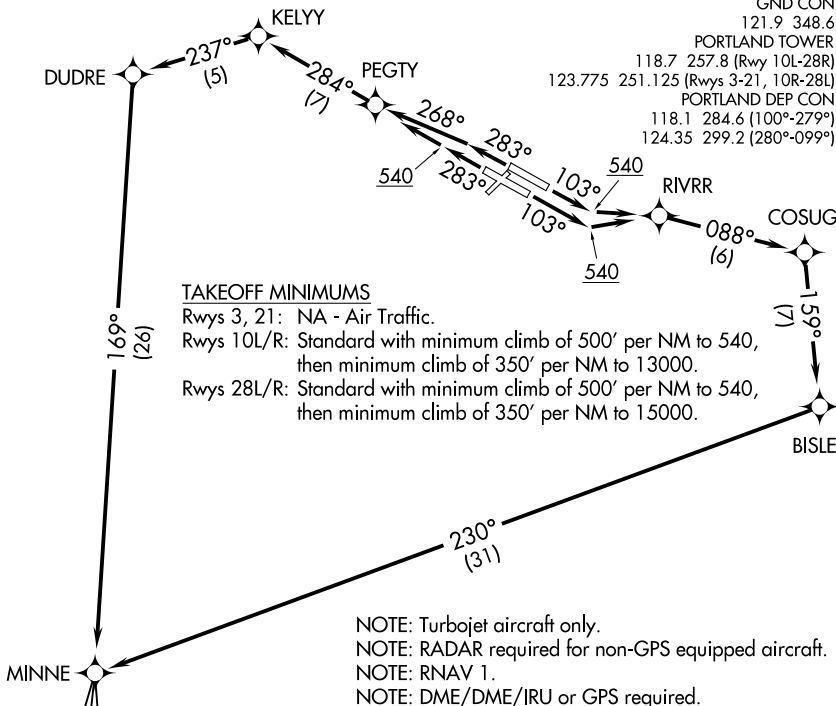
AL-330 (FAA)

PORTLAND INTL (PDX)
PORTLAND, OREGON

NW-1, 22 FEB 2024 to 21 MAR 2024

NW-1, 22 FEB 2024 to 21 MAR 2024

- D-ATIS 128.35 269.9
- CLNC DEL 120.125 318.1
- CPDLC
- GND CON 121.9 348.6
- PORTLAND TOWER 118.7 257.8 (Rwy 10L-28R)
- 123.775 251.125 (Rwys 3-21, 10R-28L)
- PORTLAND DEP CON 118.1 284.6 (100°-279°)
- 124.35 299.2 (280°-099°)



DEPARTURE ROUTE DESCRIPTION

TAKEOFF RUNWAYS 10L/R: Climb heading 103° to 540, then direct to RIVRR, then on depicted route, thence. . .

TAKEOFF RUNWAY 28L: Climb heading 283° to 540, then direct to PEGTY, then on depicted route, thence. . .

TAKEOFF RUNWAY 28R: Climb heading 283°, intercept course 268° to PEGTY, then on depicted route thence. . .

. . . via (Transition), maintain assigned altitude, expect filed altitude 10 minutes after departure.

EASON TRANSITION (MINNE5.EASON)

FAMUK TRANSITION (MINNE5.FAMUK)

HISKU TRANSITION (MINNE5.HISKU)

MINNE FIVE DEPARTURE (RNAV)
(MINNE5.MINNE) 08JAN15

PORTLAND, OREGON
PORTLAND INTL (PDX)

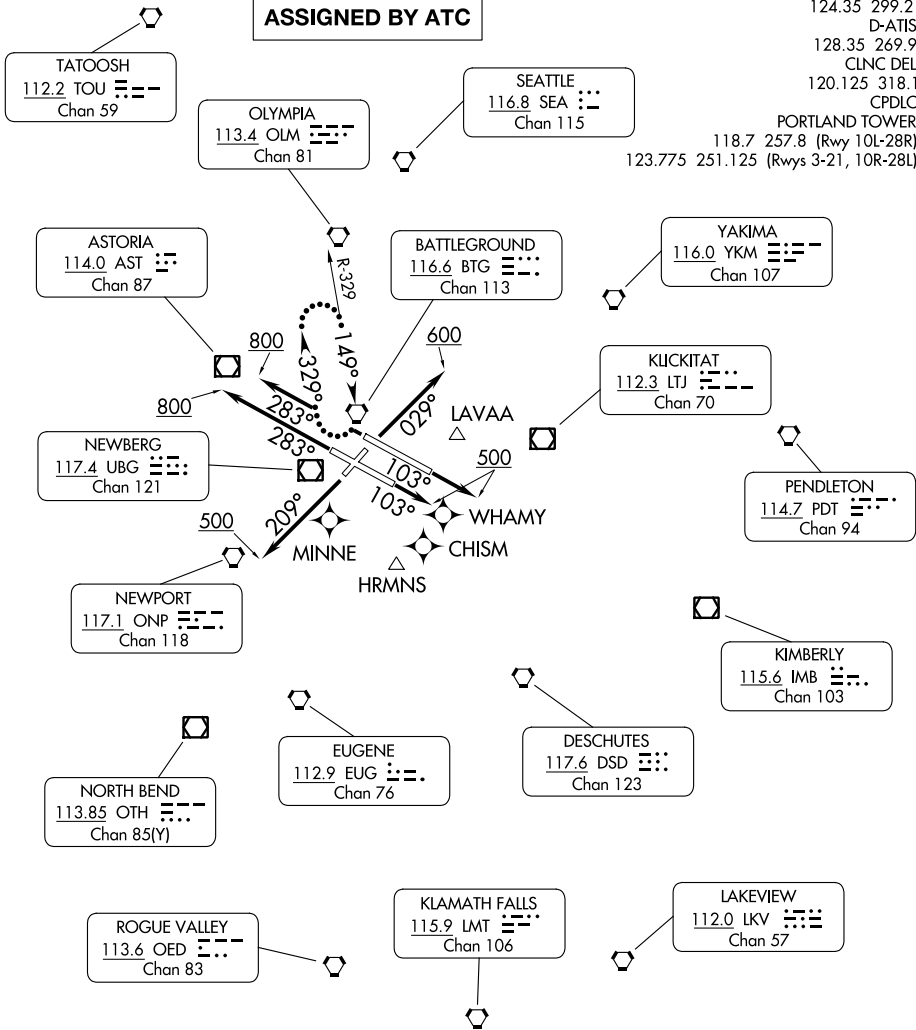
PORTLAND TWO DEPARTURE

AL-330 (FAA)

PORTLAND INTL (PDX)
PORTLAND, OREGON

**TOP ALTITUDE:
ASSIGNED BY ATC**

PORTLAND DEP CON
124.35 299.2
D-ATIS
128.35 269.9
CLNC DEL
120.125 318.1
CPDLC
PORTLAND TOWER
118.7 257.8 (Rwy 10L-28R)
123.775 251.125 (Rwys 3-21, 10R-28L)



NW-1, 22 FEB 2024 to 21 MAR 2024

NW-1, 22 FEB 2024 to 21 MAR 2024

TAKEOFF MINIMUMS

- Rwy 3: Standard with minimum climb of 375' per NM to 5300.
- Rwy 10L: Standard with minimum climb of 350' per NM to 5900.
- Rwy 10R: Standard with minimum climb of 400' per NM to 5000.
- Rwy 21: Standard with minimum climb of 430' per NM to 4000.
- Rwy 28L: Standard with minimum climb of 375' per NM to 4500.
- Rwy 28R: Standard with minimum climb of 340' per NM to 5400.

NOTE: RADAR required.

NOTE: Chart not to scale.

(CONTINUED ON FOLLOWING PAGE)

PORTLAND TWO DEPARTURE

PORTLAND, OREGON
PORTLAND INTL (PDX)



DEPARTURE ROUTE DESCRIPTION

TAKEOFF RUNWAY 3: Climb heading 029° to 600, thence. . . .

TAKEOFF RUNWAY 10L: Climb heading 103° to 500, thence. . . .

TAKEOFF RUNWAY 10R: Climb heading 103° to 500, thence. . . .

TAKEOFF RUNWAY 21: Climb heading 209° to 500, thence. . . .

TAKEOFF RUNWAY 28L: Climb heading 283° to 800, thence. . . .

TAKEOFF RUNWAY 28R: Climb heading 283° to 800, thence. . . .

. . . . climb on assigned heading for RADAR vectors to assigned route/fix.
Maintain assigned altitude, expect filed altitude five minutes after departure.

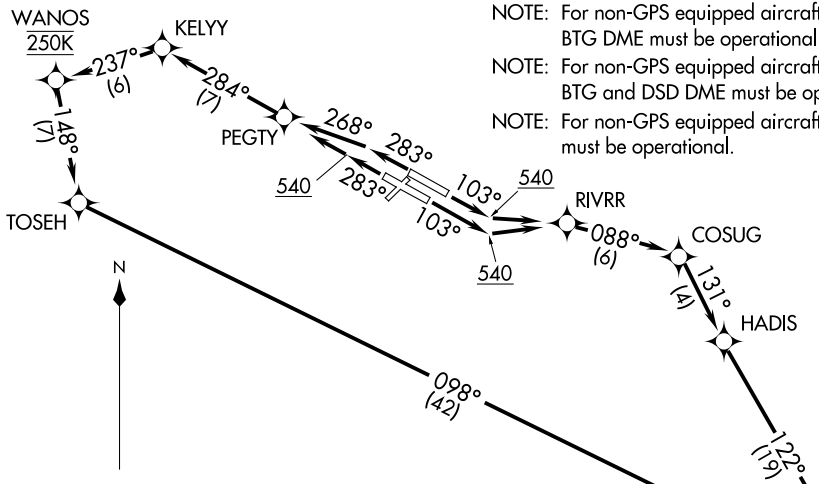
LOST COMMUNICATIONS: If no contact with ATC within 10 NM of airport, continue climb to assigned altitude and proceed direct BTG VORTAC. Climb in BTG VORTAC holding pattern to cross BTG VORTAC at or above MCA/MEA before proceeding on course.

NW-1, 22 FEB 2024 to 21 MAR 2024

NW-1, 22 FEB 2024 to 21 MAR 2024

WHAMMY FOUR DEPARTURE (RNAV)
(WHAMMY4.WHAMMY) 13NOV14

PORTLAND, OREGON
PORTLAND INTL (PDX)



- NOTE: For non-GPS equipped aircraft departing Rwy's 10L/R, UBG and BTG DME must be operational for the KOATA transition.
- NOTE: For non-GPS equipped aircraft departing Rwy's 10L/R, UBG, BTG and DSD DME must be operational for the IMB transition.
- NOTE: For non-GPS equipped aircraft departing Rwy's 28L/R, BTG DME must be operational.

D-ATIS	128.35	269.9
CLNC DEL	120.125	318.1
CPDLC		
GND CON	121.9	348.6
PORTLAND TOWER	118.7	257.8 (Rwy 10L-28R)
PORTLAND DEP CON	123.775	251.125 (Rwy's 3-21, 10R-28L)
	118.1	284.6 (100°-279°)
	124.35	299.2 (280°-099°)

TAKEOFF MINIMUMS

- Rwy's 3, 21: NA - Air traffic.
- Rwy's 10L/R: Standard with a minimum climb of 500' per NM to 540', then minimum climb of 350' per NM to 6600.
- Rwy's 28L/R: Standard with a minimum climb of 500' per NM to 540, then minimum climb of 350' per NM to 2500.

DEPARTURE ROUTE DESCRIPTION

TAKEOFF RUNWAYS 10L/R: Climb heading 103° to 540, then direct to RIVRR, then on depicted route to WHAMMY, thence. . .

TAKEOFF RUNWAY 28L: Climb heading 283° to 540, then direct PEGTY, then on depicted route to WHAMMY, thence. . .

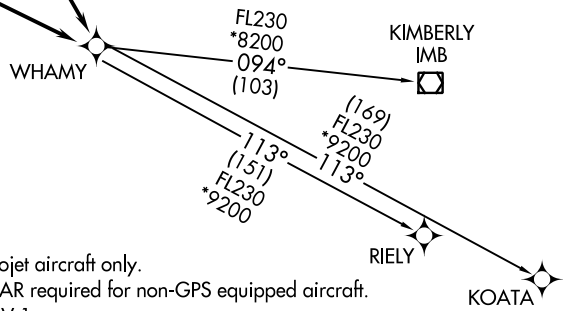
TAKEOFF RUNWAY 28R: Climb heading 283°, intercept course 268° to PEGTY, then on depicted route to WHAMMY, thence. . .

. . . via (transition), maintain assigned altitude, expect filed altitude 10 minutes after departure.

KIMBERLY TRANSITION (WHAMMY4.IMB)

KOATA TRANSITION (WHAMMY4.KOATA)

RIELY TRANSITION (WHAMMY4.RIELY)



- NOTE: Turbojet aircraft only.
- NOTE: RADAR required for non-GPS equipped aircraft.
- NOTE: RNAV 1.
- NOTE: DME/DME/IRU or GPS required.
- NOTE: Cross WANOS at 250K.

NOTE: Chart not to scale.

(WHAMMY4.WHAMMY) 17341
WHAMMY FOUR DEPARTURE (RNAV)

AL-330 (FAA)

PORTLAND INTL (PDX)
PORTLAND, OREGON