

WAAS CH 78220 W12A	APP CRS 117°	Rwy Idg TDZE Apt Elev	3449 940 940
---------------------------------	------------------------	-----------------------------	---

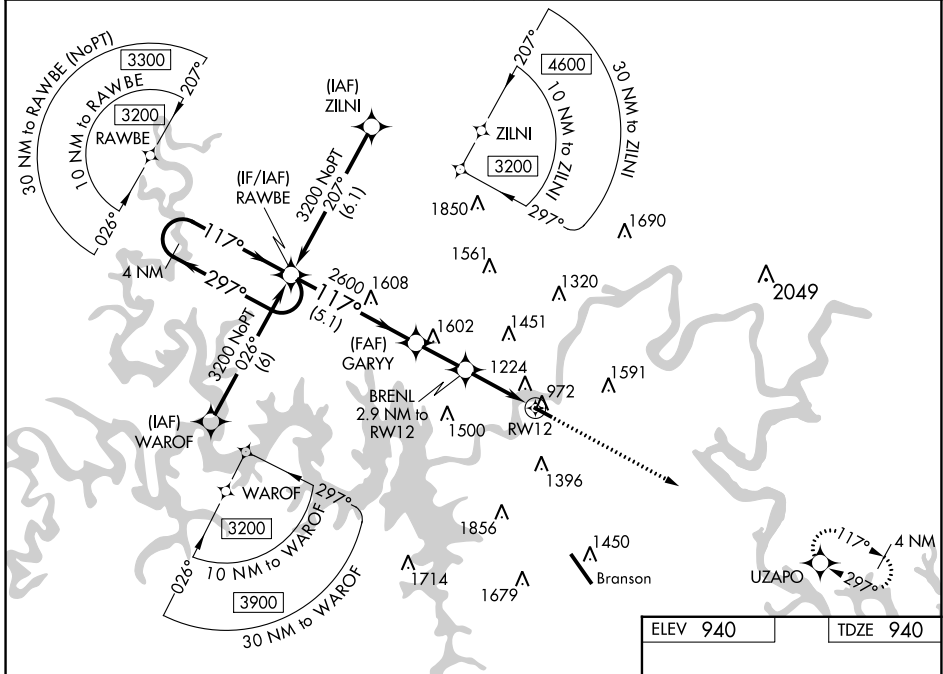
RNAV (GPS) RWY 12

M GRAHAM CLARK DOWNTOWN (PLK)

NA Baro-VNAV NA when using Branson altimeter setting. For uncompensated Baro-VNAV systems, LNAV/VNAV NA below -16°C (4°F) or above 54°C (130°F). DME/DME RNP-0.3 NA. VDP NA with Branson altimeter setting. Obtain local altimeter setting on CTAF; when not received, use Branson altimeter setting and increase all DA 65 feet and all MDA 80 feet; increase LPV all Cats visibility 1/8 mile and LNAV/VNAV all Cats visibility 1/4 mile.

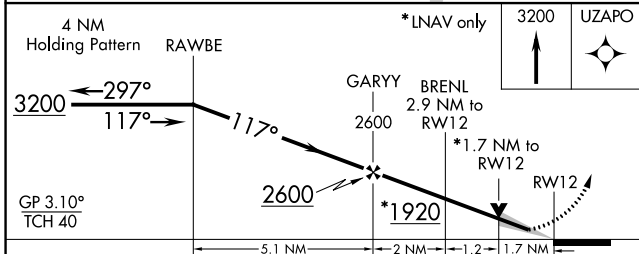
MISSED APPROACH:
Climb to 3200 direct UZAPO and hold.

SPRINGFIELD APP CON 126.35	UNICOM 122.7 (CTAF) 0
--------------------------------------	---------------------------------



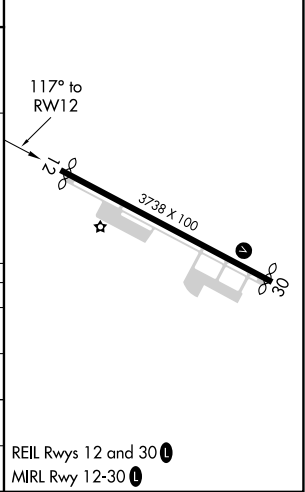
NC-3, 22 FEB 2024 to 21 MAR 2024

NC-3, 22 FEB 2024 to 21 MAR 2024



ELEV 940	TDZE 940
----------	----------

CATEGORY	A	B	C	D
LPV DA	1140-3/4	200 (200-3/4)		NA
LNAV/VNAV DA	1416-15/8	476 (500-15/8)		NA
LNAV MDA	1540-1	600 (600-1)		NA
CIRCLING	1560-1	620 (700-1)		NA



WAAS CH 50420 W30A	APP CRS 297°	Rwy Idg TDZE Apt Elev	3428 939 940
--	------------------------	-----------------------------	---

RNAV (GPS) RWY 30

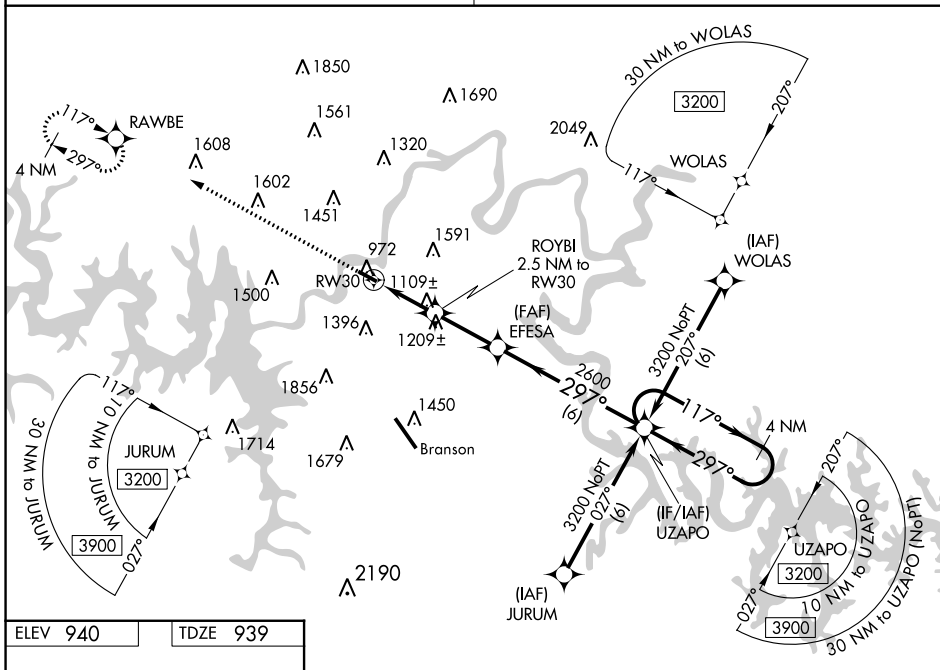
M GRAHAM CLARK DOWNTOWN (PLK)

⚠ Baro-VNAV NA when using Branson altimeter setting. For uncompensated Baro-VNAV systems, LNAV/VNAV NA below -16°C (4°F) or above 54°C (130°F). DME/DME RNP-0.3 NA. VDP NA with KBBG altimeter setting. Obtain local altimeter setting on CTAF; when not received, use Branson altimeter setting and increase all DA 65 feet and all MDA 80 feet; increase LPV and LNAV/VNAV all Cats visibility 1/4 mile.

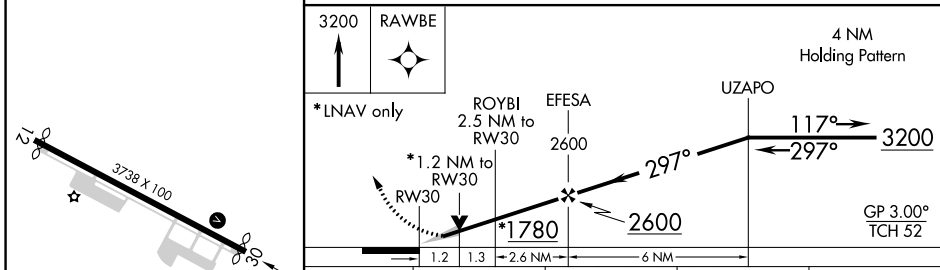
MISSED APPROACH:
Climb to 3200 direct RAWBE and hold.

SPRINGFIELD APP CON
126.35

UNICOM
122.7 (CTAF) 0



ELEV 940	TDZE 939
----------	----------



CATEGORY		A	B	C	D
LPV DA		1189-3/4	250 (300-3/4)		NA
LNAV/VNAV DA		1224-7/8	285 (300-7/8)		NA
LNAV MDA		1360-1	421 (500-1)		NA
CIRCLING		1560-1	620 (700-1)		NA

REIL Rws 12 and 30
MIRL Rwy 12-30

NC-3, 22 FEB 2024 to 21 MAR 2024

NC-3, 22 FEB 2024 to 21 MAR 2024