

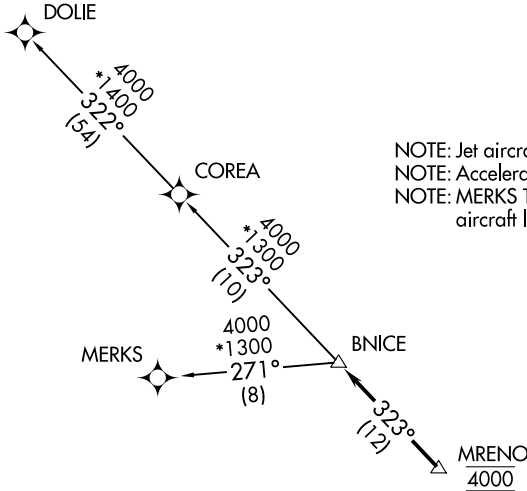
BNICE ONE DEPARTURE (RNAV)

RNAV 1 - DME/DME/IRU or GPS.

RADAR required.

**TOP ALTITUDE:
ASSIGNED BY ATC**

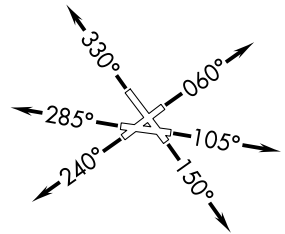
ATIS
120.55
GND CON
121.9
POMPANO BEACH TOWER *
125.4 (CTAF)
MIAMI DEP CON
126.05 251.1



NOTE: Jet aircraft only.
NOTE: Accelerate to 250K, if unable, advise ATC.
NOTE: MERKS Transition ATC assigned only except aircraft landing: MKY, RSW, APF, PGD, FMY.

TAKEOFF MINIMUMS

Rwys 6, 10, 15, 24, 28, 33: Standard with minimum climb of 500' per NM to 520.



NOTE: Chart not to scale.



DEPARTURE ROUTE DESCRIPTION

- TAKEOFF RUNWAY 6: Climb on heading 060° or as assigned by ATC for vectors to cross MRENO at 4000, thence. . .
- TAKEOFF RUNWAY 10: Climb on heading 105° or as assigned by ATC for vectors to cross MRENO at 4000, thence. . .
- TAKEOFF RUNWAY 15: Climb on heading 150° or as assigned by ATC for vectors to cross MRENO at 4000, thence. . .
- TAKEOFF RUNWAY 24: Climb on heading 240° or as assigned by ATC for vectors to cross MRENO at 4000, thence. . .
- TAKEOFF RUNWAY 28: Climb on heading 285° or as assigned by ATC for vectors to cross MRENO at 4000, thence. . .
- TAKEOFF RUNWAY 33: Climb on heading 330° or as assigned by ATC for vectors to cross MRENO at 4000, thence. . .

. . . on track 323° to BNICE, then on assigned transition, maintain ATC assigned altitude, expect clearance to filed altitude within 10 minutes after departure.

- COREA TRANSITION (BNICE1.COREA)
- DOLIE TRANSITION (BNICE1.DOLIE)
- MERKS TRANSITION (BNICE1.MERKS)

(DORRL1.DORRL) 23110

AL-5972 (FAA)

POMPANO BEACH AIRPARK (PMP)
POMPANO BEACH, FLORIDA

DORRL ONE DEPARTURE (RNAV)

ATIS
120.55
GND CON
121.9

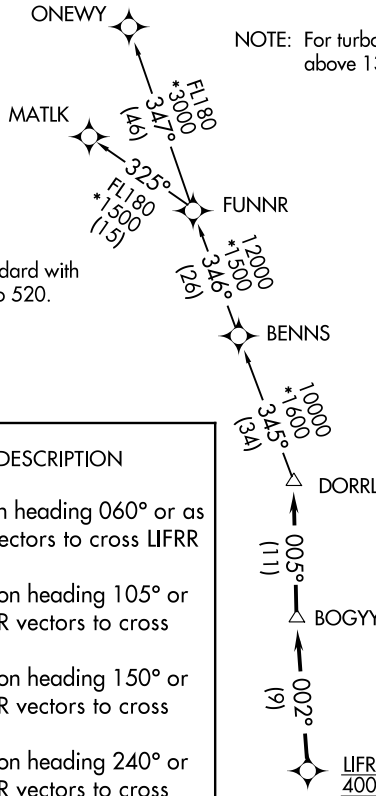
POMPANO BEACH TOWER ★
125.4 (CTAF)
MIAMI DEP CON
126.05 251.1

**TOP ALTITUDE:
ASSIGNED BY ATC**

RNAV 1 - DME/DME/IRU or GPS.

RADAR required.

NOTE: For turbo-props/props filed at or above 13000.



TAKEOFF MINIMUMS

Rwys 6, 10, 15, 24, 28, 33: Standard with minimum climb of 500' per NM to 520.

DEPARTURE ROUTE DESCRIPTION

TAKEOFF RUNWAY 6: Climb on heading 060° or as assigned by ATC for RADAR vectors to cross LIFRR at 4000, thence. . . .

TAKEOFF RUNWAY 10: Climb on heading 105° or as assigned by ATC for RADAR vectors to cross LIFRR at 4000, thence. . . .

TAKEOFF RUNWAY 15: Climb on heading 150° or as assigned by ATC for RADAR vectors to cross LIFRR at 4000, thence. . . .

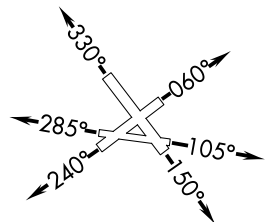
TAKEOFF RUNWAY 24: Climb on heading 240° or as assigned by ATC for RADAR vectors to cross LIFRR at 4000, thence. . . .

TAKEOFF RUNWAY 28: Climb on heading 285° or as assigned by ATC for RADAR vectors to cross LIFRR at 4000, thence. . . .

TAKEOFF RUNWAY 33: Climb on heading 330° or as assigned by ATC for RADAR vectors to cross LIFRR at 4000, thence. . . .

. . . .on track 002° to BOGY, then on track 005° to DORRL then on (transition), maintain altitude as assigned by ATC, expect filed altitude 10 minutes after departure.

MATLK TRANSITION (DORRL1.MATLK)
ONEWY TRANSITION (DORRL1.ONEWY)



NOTE: Chart not to scale.

DORRL ONE DEPARTURE (RNAV)

(DORRL1.DORRL) 19MAY22

POMPANO BEACH, FLORIDA
POMPANO BEACH AIRPARK (PMP)

SE-3, 22 FEB 2024 to 21 MAR 2024

SE-3, 22 FEB 2024 to 21 MAR 2024

(FEALX2.FEALX) 22167

AL-5972 (FAA)

POMPANO BEACH AIRPARK (PMP)
POMPANO BEACH, FLORIDA

FEALX TWO DEPARTURE (RNAV)

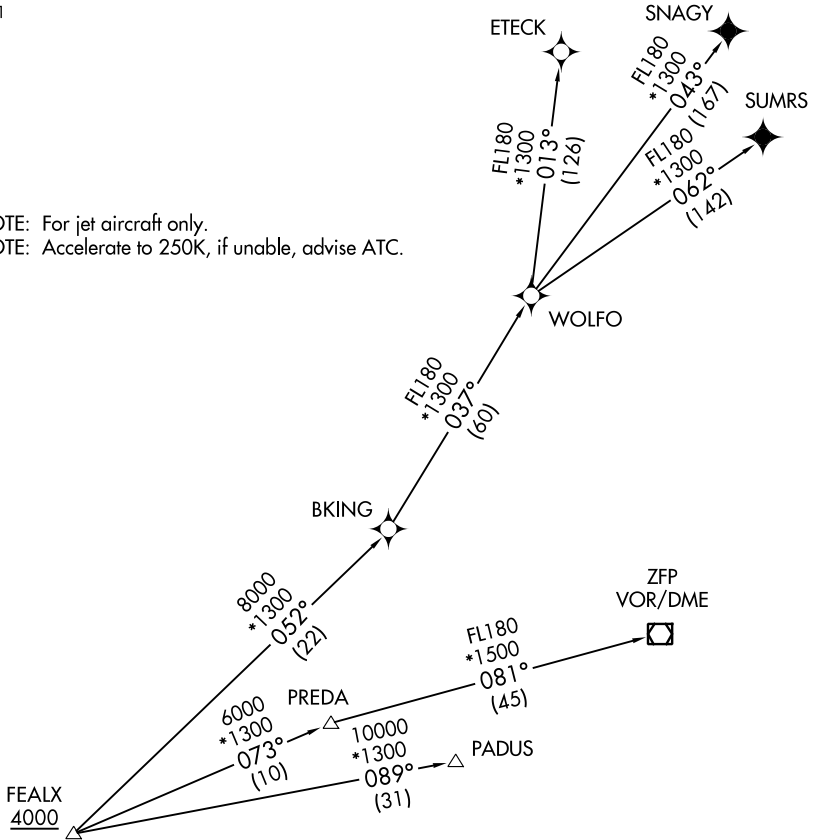
ATIS
120.55
GND CON
121.9
POMPANO BEACH TOWER ★
125.4 (CTAF)
MIAMI DEP CON
126.05 251.1

**TOP ALTITUDE:
ASSIGNED BY ATC**

RNAV 1 - DME/DME/IRU or GPS.
From WOLFO to SNAGY, SUMRS - GPS.

RADAR required.

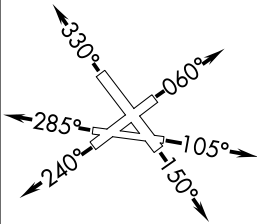
NOTE: For jet aircraft only.
NOTE: Accelerate to 250K, if unable, advise ATC.



TAKEOFF MINIMUMS

Rwys 6, 24, 28, 33: Standard.

Rwys 10, 15: Standard with minimum climb of 500' per NM to 520.



(NARRATIVE ON FOLLOWING PAGE)

NOTE: Chart not to scale.

FEALX TWO DEPARTURE (RNAV)

(FEALX2.FEALX) 19MAY22

POMPANO BEACH, FLORIDA
POMPANO BEACH AIRPARK (PMP)

SE-3, 22 FEB 2024 to 21 MAR 2024

SE-3, 22 FEB 2024 to 21 MAR 2024

FEALX TWO DEPARTURE (RNAV)



DEPARTURE ROUTE DESCRIPTION

TAKEOFF RUNWAY 6: Climb on heading 060° or as assigned by ATC for vectors to cross FEALX at or above 4000, thence. . .

TAKEOFF RUNWAY 10: Climb on heading 105° or as assigned by ATC for vectors to cross FEALX at or above 4000, thence. . .

TAKEOFF RUNWAY 15: Climb on heading 150° or as assigned by ATC for vectors to cross FEALX at or above 4000, thence. . .

TAKEOFF RUNWAY 24: Climb on heading 240° or as assigned by ATC for vectors to cross FEALX at or above 4000, thence. . .

TAKEOFF RUNWAY 28: Climb on heading 285° or as assigned by ATC for vectors to cross FEALX at or above 4000, thence. . .

TAKEOFF RUNWAY 33: Climb on heading 330° or as assigned by ATC for vectors to cross FEALX at or above 4000, thence. . .

. . .(transition). Maintain ATC assigned altitude. Expect clearance to filed altitude ten minutes after departure.

ETECK TRANSITION (FEALX2.ETECK)

FREEPORT TRANSITION (FEALX2.ZFP)

PADUS TRANSITION (FEALX2.PADUS)

SNAGY TRANSITION (FEALX2.SNAGY)

SUMRS TRANSITION (FEALX2.SUMRS)

WOLFO TRANSITION (FEALX2.WOLFO)

SE-3, 22 FEB 2024 to 21 MAR 2024

SE-3, 22 FEB 2024 to 21 MAR 2024

FORT LAUDERDALE ONE DEPARTURE



DEPARTURE ROUTE DESCRIPTION

TAKEOFF RUNWAYS 6, 10, 24, 28, 33: Climb on assigned heading, thence. . . .

TAKEOFF RUNWAY 15: Climb on heading 146° to 500, then climb on assigned heading, thence. . . .

. . . .altitude as assigned by ATC, expect RADAR vectors to appropriate transition.
Expect further clearance to filed altitude ten (10) minutes after departure.

AARPS TRANSITION (FLL1.AARPS): From over FLL VOR/DME on FLL R-358 to AARPS.

BEECH TRANSITION (FLL1.BEECH): From over FLL VOR/DME on FLL R-104 to BEECH.

BNICE TRANSITION (FLL1.BNICE): From over DHP VORTAC on DHP R-321 to BNICE.

DORRL TRANSITION (FLL1.DORRL): From over DHP VORTAC on DHP R-003 to DORRL.

FEALX TRANSITION (FLL1.FEALX): From over FLL VOR/DME on FLL R-069 to FEALX.

FREEPORT TRANSITION (FLL1.ZFP): From over FLL VOR/DME on FLL R-069 to FEALX, then on ZFP R-257 to ZFP VOR/DME.

FRSBE TRANSITION (FLL1.FRSBE): From over DHP VORTAC on DHP R-348 to FRSBE.

HROCK TRANSITION (FLL1.HROCK): From over FLL VOR/DME on FLL R-311 to HROCK.

MAYNR TRANSITION (FLL1.MAYNR): From over DHP VORTAC on DHP R-196 to MAYNR.

SE-3, 22 FEB 2024 to 21 MAR 2024

SE-3, 22 FEB 2024 to 21 MAR 2024

(FRSBE2.FRSBE) 23110

AL-5972 (FAA)

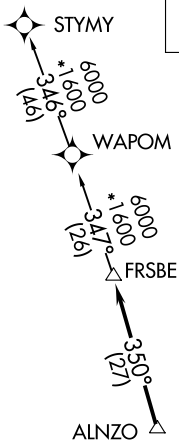
POMPANO BEACH AIRPARK (PMP)
POMPANO BEACH, FLORIDA

FRSBE TWO DEPARTURE (RNAV)

**TOP ALTITUDE:
ASSIGNED BY ATC**

RNAV 1-DME/DME IRU or GPS.
RADAR required.

ATIS
120.55
GND CON
121.9
POMPANO BEACH TOWER*
125.4 (CTAF)
MIAMI DEP CON
126.05 251.1



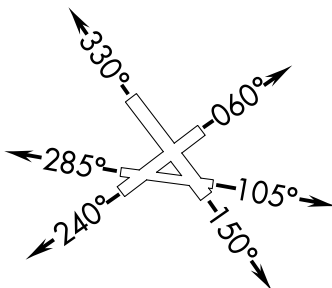
TAKEOFF MINIMUMS

Rwys 6, 24, 28, 33: Standard.

Rwy 10: 300-1¼ or standard with minimum climb of 265' per NM to 300.

Rwy 15: 300-2 or standard with minimum climb of 425' per NM to 500.

- NOTE: Jet aircraft only.
- NOTE: Accelerate to 250K, if unable, advise ATC.
- NOTE: WAPOM Transition for KMCO, KDAB, and KMLB area arrivals.



NOTE: Chart not to scale.

DEPARTURE ROUTE DESCRIPTION

TAKEOFF RUNWAY 6: Climb on heading 060° or as assigned by ATC for RADAR vectors to ALNZO, thence. . . .

TAKEOFF RUNWAY 10: Climb on heading 105° or as assigned by ATC for RADAR vectors to ALNZO, thence. . . .

TAKEOFF RUNWAY 15: Climb on heading 150° or as assigned by ATC for RADAR vectors to ALNZO, thence. . . .

TAKEOFF RUNWAY 24: Climb on heading 240° or as assigned by ATC for RADAR vectors to ALNZO, thence. . . .

TAKEOFF RUNWAY 28: Climb on heading 285° or as assigned by ATC for RADAR vectors to ALNZO, thence. . . .

TAKEOFF RUNWAY 33: Climb on heading 330° or as assigned by ATC for RADAR vectors to ALNZO, thence. . . .

. . . . on track 350° to FRSBE, then on (transition). Maintatin ATC assigned altitude, expect filed altitude 10 minutes after departure.

STYMY TRANSITION (FRSBE2.STYMY)

WAPOM TRANSITION (FRSBE2.WAPOM)

FRSBE TWO DEPARTURE (RNAV)

(FRSBE2.FRSBE) 20APR23

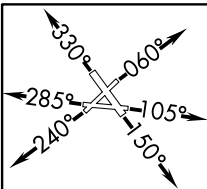
POMPANO BEACH, FLORIDA
POMPANO BEACH AIRPARK (PMP)

SE-3, 22 FEB 2024 to 21 MAR 2024

SE-3, 22 FEB 2024 to 21 MAR 2024

GABOW TWO DEPARTURE (RNAV)
(GABOW2.GABOW) 19MAY22

POMPANO BEACH, FLORIDA
POMPANO BEACH AIRPARK (PMP)

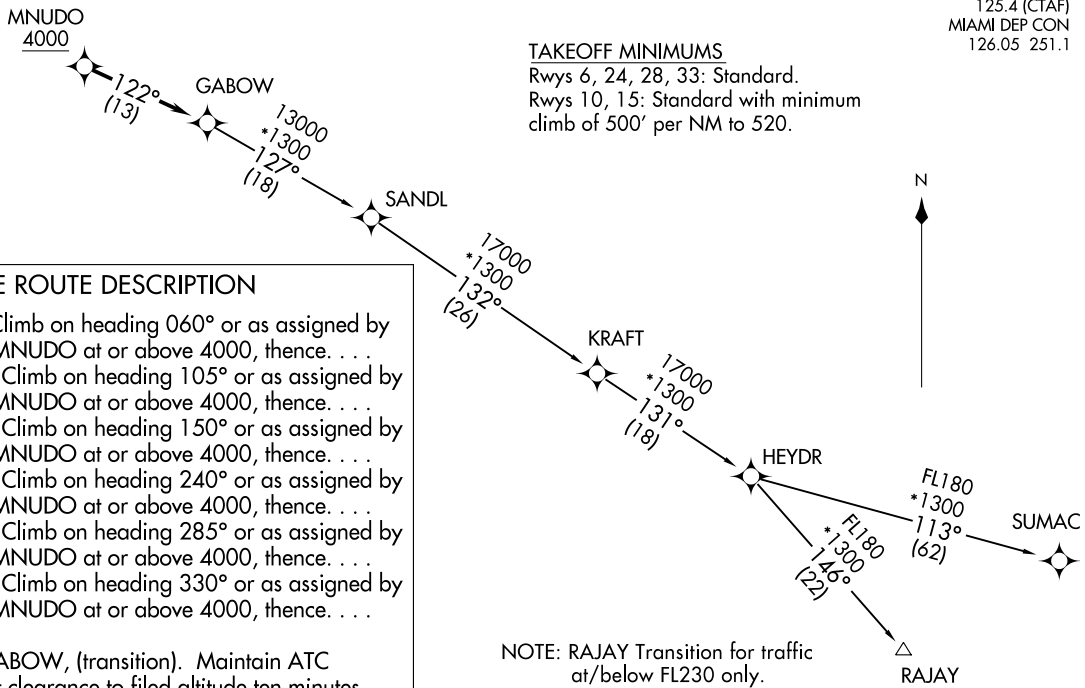


**TOP ALTITUDE:
ASSIGNED BY ATC**

RNAV 1 - DME/DME/IRU or GPS.
From KRAFT - GPS.
RADAR required.

ATIS 120.55
GND CON 121.9
POMPANO BEACH TOWER * 121.9
125.4 (CTAF)
MIAMI DEP CON 126.05 251.1

TAKEOFF MINIMUMS
Rwys 6, 24, 28, 33: Standard.
Rwys 10, 15: Standard with minimum
climb of 500' per NM to 520.



NOTE: Chart not to scale.

DEPARTURE ROUTE DESCRIPTION

- TAKEOFF RUNWAY 6:** Climb on heading 060° or as assigned by ATC for vectors to cross MNUDO at or above 4000, then...
- TAKEOFF RUNWAY 10:** Climb on heading 105° or as assigned by ATC for vectors to cross MNUDO at or above 4000, then...
- TAKEOFF RUNWAY 15:** Climb on heading 150° or as assigned by ATC for vectors to cross MNUDO at or above 4000, then...
- TAKEOFF RUNWAY 24:** Climb on heading 240° or as assigned by ATC for vectors to cross MNUDO at or above 4000, then...
- TAKEOFF RUNWAY 28:** Climb on heading 285° or as assigned by ATC for vectors to cross MNUDO at or above 4000, then...
- TAKEOFF RUNWAY 33:** Climb on heading 330° or as assigned by ATC for vectors to cross MNUDO at or above 4000, then...

... on track 122° to GABOW, (transition). Maintain ATC assigned altitude. Expect clearance to filed altitude ten minutes after departure.

- RAJAY TRANSITION (GABOW2.RAJAY)
- SANDL TRANSITION (GABOW2.SANDL)
- SUMAC TRANSITION (GABOW2.SUMAC)

NOTE: RAJAY Transition for traffic at/below FL230 only.

(GABOW2.GABOW) 22139
GABOW TWO DEPARTURE (RNAV)

POMPANO BEACH AIRPARK (PMP)
POMPANO BEACH, FLORIDA
AL-5972 (FAA)

RNAV 1-DME/DME/IRU or GPS.
RADAR required.

**TOP ALTITUDE:
ASSIGNED BY ATC**

ATIS 120.55
GND CON 121.9
POMPANO BEACH TOWER ★ 125.4
MIAMI DEP CON 126.05 251.1

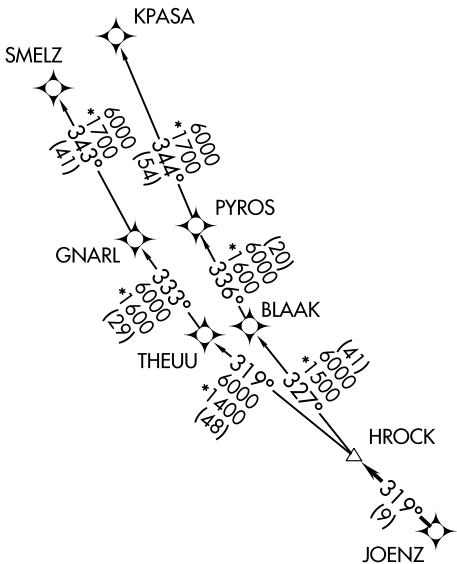
(HROCK2, HROCK) 23110
HROCK TWO DEPARTURE (RNAV)

AL-5972 (FAA)

POMPANO BEACH AIRPARK (PMBP)
POMPANO BEACH, FLORIDA

HROCK TWO DEPARTURE (RNAV)
(HROCK2, HROCK) 20APR23

POMPANO BEACH, FLORIDA
POMPANO BEACH AIRPARK (PMBP)



TAKEOFF MINIMUMS

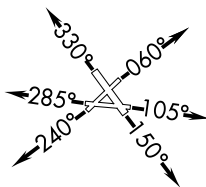
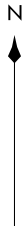
Rwys 6, 24, 28, 33: Standard.

Rwy 10: 300-1¼ or standard with minimum climb of 265' per NM to 300.

Rwy 15: 300-2 or standard with minimum climb of 425' per NM to 500.

NOTE: Jet aircraft only.

NOTE: Accelerate to 250K, if unable, advise ATC.



(NARRATIVE ON FOLLOWING PAGE)

NOTE: Chart not to scale.

HROCK TWO DEPARTURE (RNAV)



DEPARTURE ROUTE DESCRIPTION

TAKEOFF RUNWAY 6: Climb on heading 060° or as assigned for RADAR vectors to cross JOENZ, thence. . . .

TAKEOFF RUNWAY 10: Climb on heading 105° or as assigned for RADAR vectors to cross JOENZ, thence. . . .

TAKEOFF RUNWAY 15: Climb on heading 150° or as assigned for RADAR vectors to cross JOENZ, thence. . . .

TAKEOFF RUNWAY 24: Climb on heading 240° or as assigned for RADAR vectors to cross JOENZ, thence. . . .

TAKEOFF RUNWAY 28: Climb on heading 285° or as assigned for RADAR vectors to cross JOENZ, thence. . . .

TAKEOFF RUNWAY 33: Climb on heading 330° or as assigned for RADAR vectors to cross JOENZ, thence. . . .

. . . .on track 319° to HROCK, then on assigned transition. Maintain ATC assigned altitude, expect filed altitude within 10 minutes after departure.

KPASA TRANSITION (HROCK2.KPASA)

SMELZ TRANSITION (HROCK2.SMELZ)

SE-3, 22 FEB 2024 to 21 MAR 2024

SE-3, 22 FEB 2024 to 21 MAR 2024

(LIFRR1.LIFRR) 22139

AL-5972 (FAA)

POMPANO BEACH AIRPARK (PMP)
POMPANO BEACH, FLORIDA

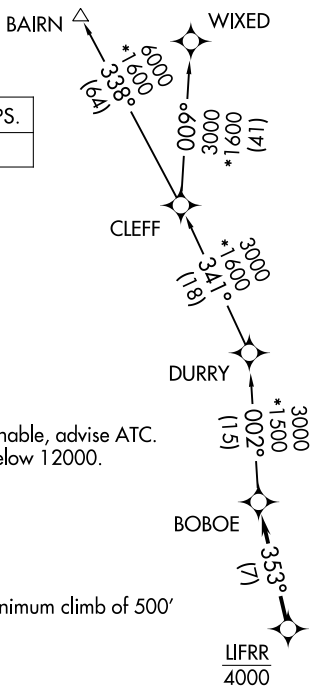
LIFRR ONE DEPARTURE (RNAV)

**TOP ALTITUDE:
ASSIGNED BY ATC**

RNAV 1 - DME/DME/IRU or GPS.

RADAR required.

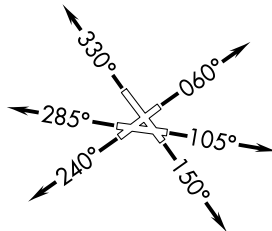
ATIS 120.55
GND CON 121.9
POMPANO BEACH TOWER * 125.4 (CTAF)
MIAMI DEP CON 126.05 251.1



NOTE: Jet aircraft only.
NOTE: Accelerate to 250K, if unable, advise ATC.
NOTE: For aircraft filed at or below 12000.

TAKEOFF MINIMUMS

Rwys 6, 24, 28, 33: Standard.
Rwys 10, 15: Standard with minimum climb of 500' per NM to 520.



NOTE: Chart not to scale.

DEPARTURE ROUTE DESCRIPTION

- TAKEOFF RUNWAY 6:** Climb on heading 060° or as assigned by ATC for vectors to cross LIFRR at 4000, thence. . .
- TAKEOFF RUNWAY 10:** Climb on heading 105° or as assigned by ATC for vectors to cross LIFRR at 4000, thence. . .
- TAKEOFF RUNWAY 15:** Climb on heading 150° or as assigned by ATC for vectors to cross LIFRR at 4000, thence. . .
- TAKEOFF RUNWAY 24:** Climb on heading 240° or as assigned by ATC for vectors to cross LIFRR at 4000, thence. . .
- TAKEOFF RUNWAY 28:** Climb on heading 285° or as assigned by ATC for vectors to cross LIFRR at 4000, thence. . .
- TAKEOFF RUNWAY 33:** Climb on heading 330° or as assigned by ATC for vectors to cross LIFRR at 4000, thence. . .

. . . on track 353° to BOBOE, then on assigned transition, maintain ATC assigned altitude, expect clearance to filed altitude within 10 minutes after departure.

BAIRN TRANSITION (LIFRR1.BAIRN)
WIXED TRANSITION (LIFRR1.WIXED)

LIFRR ONE DEPARTURE (RNAV)
(LIFRR1.LIFRR) 19MAY22

POMPANO BEACH, FLORIDA
POMPANO BEACH AIRPARK (PMP)

SE-3, 22 FEB 2024 to 21 MAR 2024

SE-3, 22 FEB 2024 to 21 MAR 2024

MAYNR ONE DEPARTURE (RNAV)
 (MAYNR1, MAYNR) 19MAY22

POMPANO BEACH AIRPARK (PMP)
 POMPANO BEACH, FLORIDA

ATIS
 120.55
 GND CON
 121.9
 POMPANO BEACH TOWER ★
 125.4 (CTAF)
 MIAMI DEP CON
 126.05 251.1

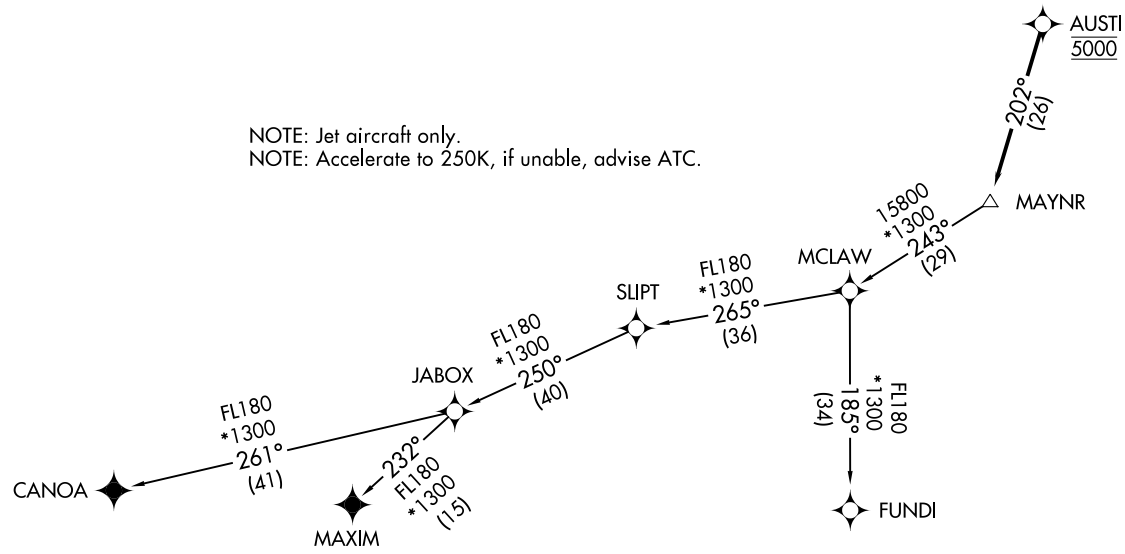
RNAV1 - DME/DME/IRU or GPS.
 From SLIPT to MAXIM: RNAV 1- GPS.
 From SLIPT to CANOA: RNAV 1- GPS.
 RADAR required.

**TOP ALTITUDE:
 ASSIGNED BY ATC**



TAKEOFF MINIMUMS
 Rwy 6, 10, 15, 24, 28, 33: Standard with minimum climb of 500' per NM to 520.

NOTE: Jet aircraft only.
 NOTE: Accelerate to 250K, if unable, advise ATC.



NOTE: Chart not to scale.

(NARRATIVE ON FOLLOWING PAGE)

(MAYNR1, MAYNR) 22139
 MAYNR ONE DEPARTURE (RNAV)

POMPANO BEACH AIRPARK (PMP)
 POMPANO BEACH, FLORIDA

AL-5972 (FAA)

MAYNR ONE DEPARTURE (RNAV)



DEPARTURE ROUTE DESCRIPTION

TAKEOFF RUNWAYS 6, 10, 15, 24, 28, 33: Climb on heading assigned by ATC for vectors to cross AUSTI at 5000, thence. . . .

. . . .on track 202° to MAYNR, then on assigned transition, maintain altitude as assigned by ATC, expect clearance to filed altitude within 10 minutes after departure.

CANOA TRANSITION (MAYNR1.CANOA)

FUNDI TRANSITION (MAYNR1.FUNDI)

MAXIM TRANSITION (MAYNR1.MAXIM)

SE-3, 22 FEB 2024 to 21 MAR 2024

SE-3, 22 FEB 2024 to 21 MAR 2024