

LOC I-POU 111.3	APP CRS 063°	Rwy Idg TDZE 156 Apt Elev 164
---------------------------	------------------------	---

ILS or LOC RWY 6

HUDSON VALLEY RGNL (POU)

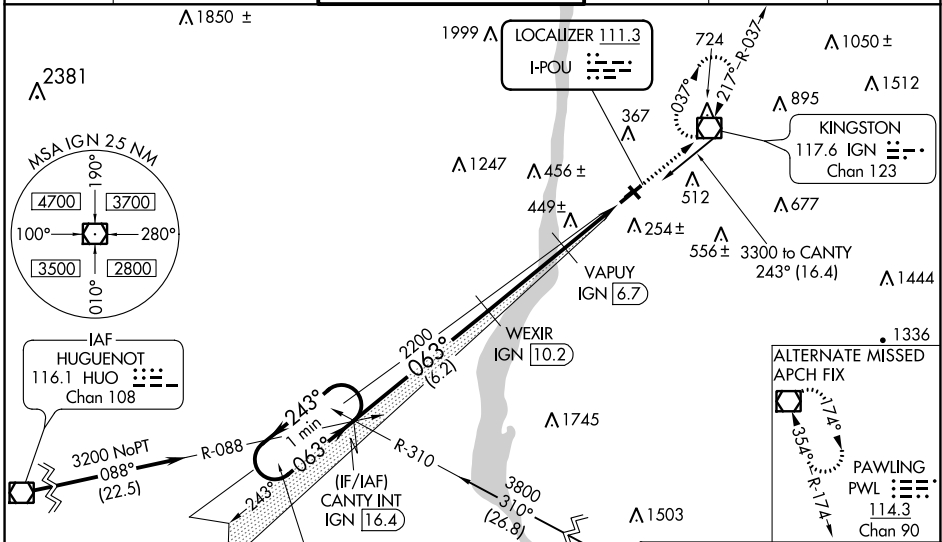
DME required for LOC only.

⚠ Circling NA to Rwys 7 and 25. Circling Rwy 15, 33 NA at night. Rwy 6 helicopter visibility reduction below 3/4 SM NA. DME from IGN VOR/DME. Simultaneous reception of I-POU and IGN DME required. For inop ALS, increase S-LOC 6 Cats C/D visibility to 1 1/2 SM. When local altimeter setting not received, use Montgomery altimeter setting: increase S-ILS 6 DA to 556; increase all MDA 80 feet and S-LOC 6 and Circling Cats C/D visibility 1/4 SM. Inop table does not apply to S-ILS 6 all Cats and S-LOC 6 Cats A/B. For inop ALS when using Montgomery altimeter setting, increase S-ILS 6 all Cats visibility to 1 1/2 SM and S-LOC 6 Cats C/D visibility to 1 1/2 SM.



MISSED APPROACH:
Climb to 3000 direct IGN VOR/DME and hold, continue climb-in-hold to 3000.

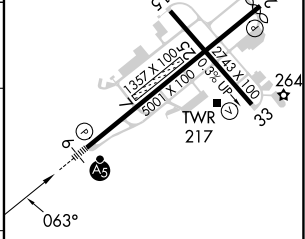
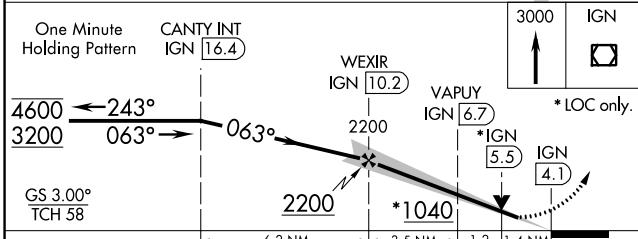
ATIS 126.75	NEW YORK APP CON 132.75 363.1	DUTCHESS COUNTY TOWER ★ 124.0 (CTAF) 269.15	GND CON 121.8	CLNC DEL 121.8	UNICOM 122.95
-----------------------	---	---	-------------------------	--------------------------	-------------------------



NE-2, 22 FEB 2024 to 21 MAR 2024

NE-2, 22 FEB 2024 to 21 MAR 2024

ELEV 164	D TDZE 156
----------	-------------------



CATEGORY	A	B	C	D
S-ILS 6		485-1	329 (400-1)	
S-LOC 6		640-1	484 (500-1)	
CIRCLING	760-1 596 (600-1)	840-1 676 (700-1)	940-2 1/4 776 (800-2 1/4)	1080-3 916 (1000-3)

MIRL Rwy 15-33
HIRL Rwy 6-24
REIL Rwy 24
REIL Rwy 33

APP CRS	Rwy Idg	4886
243°	TDZE	157
	Apt Elev	164

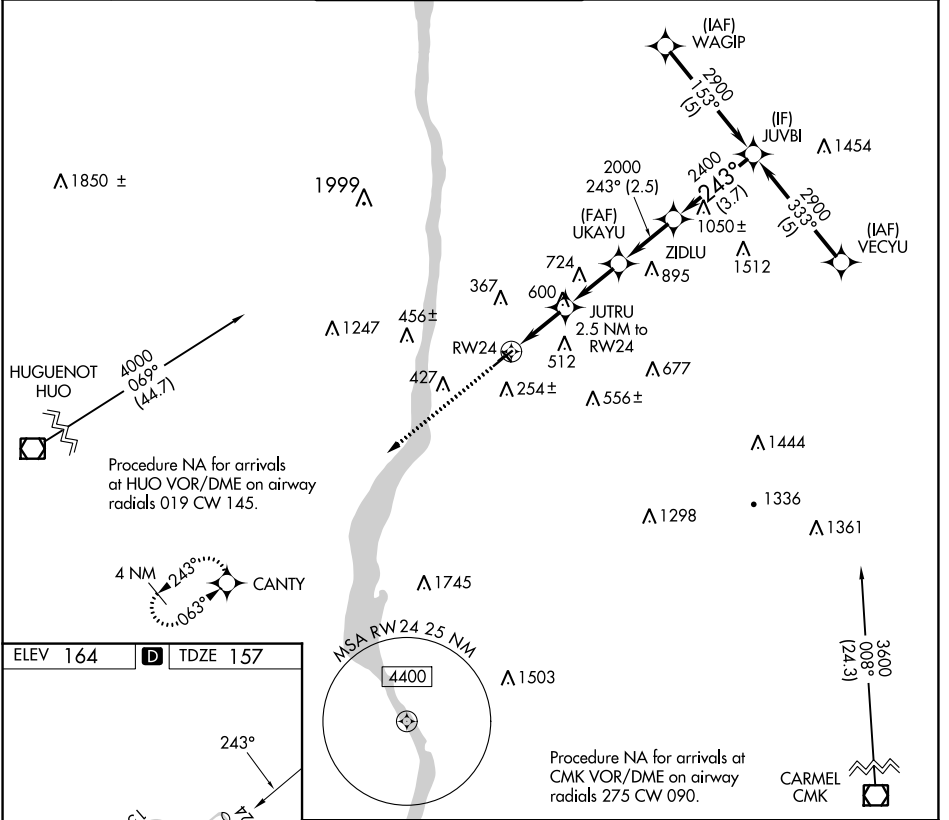
RNAV (GPS) RWY 24

HUDSON VALLEY RGNL (POU)

⚠ Circling NA to Rwy 7 and 25. Circling Rwy 15, 33 NA at night. Rwy 24 helicopter visibility reduction below 3/4 SM NA. Rwy 15, 33 helicopter visibility reduction below 1 NA. DME/DME RNP-0.3 NA. When local altimeter not received, use Montgomery altimeter setting and increase all MDAs 80 feet and LNAV Cat C and Circling Cats A, B and C visibility 1/4 SM.

MISSED APPROACH:
Climb to 3200 direct CANTY and hold.

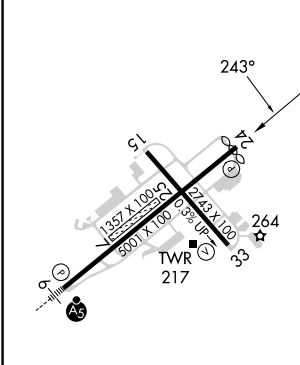
ATIS 126.75	NEW YORK APP CON 132.75 363.1	DUTCHESS COUNTY TOWER * 124.0 (CTAF) 269.15	GND CON 121.8	CLNC DEL 121.8	UNICOM 122.95
-----------------------	---	---	-------------------------	--------------------------	-------------------------



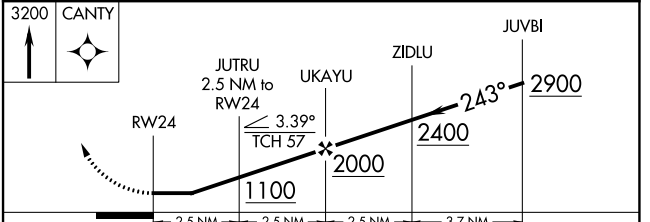
NE-2, 22 FEB 2024 to 21 MAR 2024

NE-2, 22 FEB 2024 to 21 MAR 2024

ELEV 164	D	TDZE 157
----------	----------	----------



MIRL Rwy 15-33	
HIRL Rwy 6-24	1
REIL Rwy 24	1
REIL Rwy 33	



CATEGORY	A	B	C	D
LNAV MDA	900-1 743 (800-1)	900-1 1/4 743 (800-1 1/4)	900-2 1/4 743 (800-2 1/4)	900-2 1/2 743 (800-2 1/2)
CIRCLING	900-1 736 (800-1)	900-1 1/4 736 (800-1 1/4)	940-2 1/4 776 (800-2 1/4)	1080-3 916 (1000-3)

WAAS CH 42910 W06A	APP CRS 063°	Rwy Idg TDZE 156 Apt Elev 164	5001
--	------------------------	---	-------------

RNAV (GPS) RWY 6

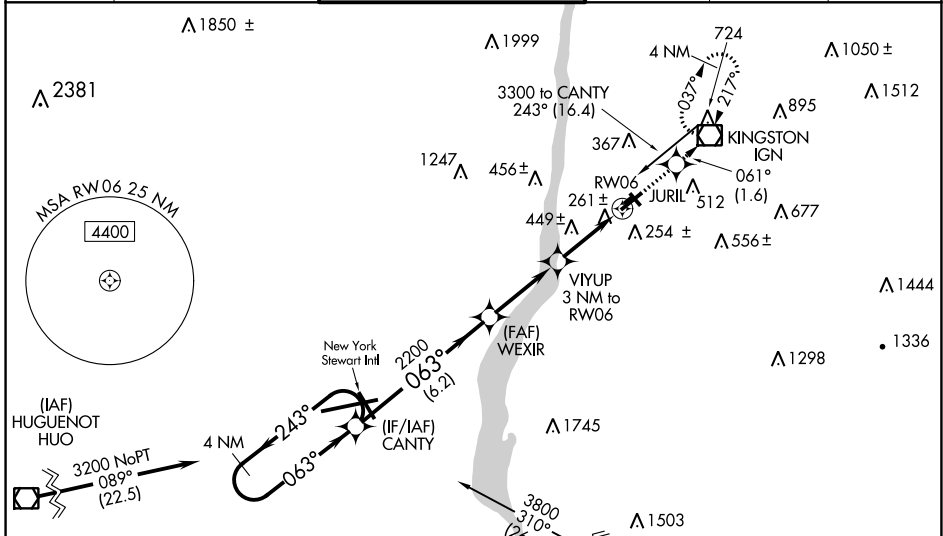
HUDSON VALLEY RGNL (POU)

⚠ Circling NA to Rwy 7 and 25. Baro-VNAV NA when using Montgomery altimeter setting. For uncompensated Baro-VNAV systems, LNAV/VNAV NA below -15°C (5°F) or above 49°C (120°F). Circling Rwy 15, 33 NA at night. Rwy 6 helicopter visibility reduction below ¾ SM NA. Rwy 15, 33 helicopter visibility reduction below 1 SM NA. DME/DME RNP-0.3 NA. When local altimeter setting not received, use Montgomery altimeter setting: increase LPV DA to 574; increase LNAV/VNAV DA to 809 and all Cats visibility ¼ SM; increase all MDA 80 feet and LNAV Cats C/D and Circling Cats C/D visibility ¼ SM; inop table does not apply to LNAV Cats A/B; for inop ALS, increase LPV all Cats visibility to 1 ½ SM. For inop ALS when using Montgomery altimeter setting, increase LPV all Cats visibility to 1 ¾ SM, LNAV/VNAV all Cats visibility to 2 SM and LNAV Cats C/D to 1 ¾ SM.

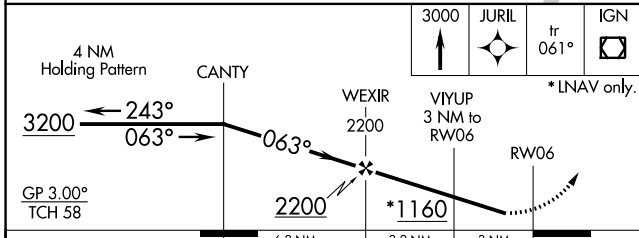
MALSR

MISSED APPROACH:
Climb to 3000 direct JURIL and on track 061° to IGN VOR/DME and hold, continue climb-in-hold to 3000.

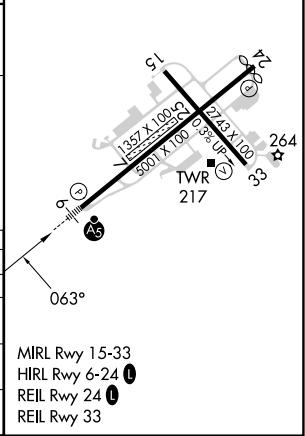
ATIS 126.75	NEW YORK APP CON 132.75 363.1	DUTCHESS COUNTY TOWER ★ 124.0 (CTAF) 269.15	GND CON 121.8	CLNC DEL 121.8	UNICOM 122.95
-----------------------	---	---	-------------------------	--------------------------	-------------------------



ELEV 164	D TDZE 156
-----------------	--------------------------



CATEGORY	A	B	C	D
LPV DA		503-1	347 (400-1)	
LNAV/VNAV DA		738-1 ½	582 (600-1 ½)	
LNAV MDA	740-1	584 (600-1)	740-1 ¼	584 (600-1 ¼)
CIRCLING	760-1 596 (600-1)	840-1 676 (700-1)	940-2 ¼ 776 (800-2 ¼)	1080-3 916 (1000-3)



NE-2, 22 FEB 2024 to 21 MAR 2024

NE-2, 22 FEB 2024 to 21 MAR 2024

VOR/DME IGN	APP CRS	Rwy Idg	4886
117.6	242°	TDZE	157
Chan 123		Apt Elev	164

VOR RWY 24

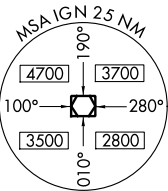
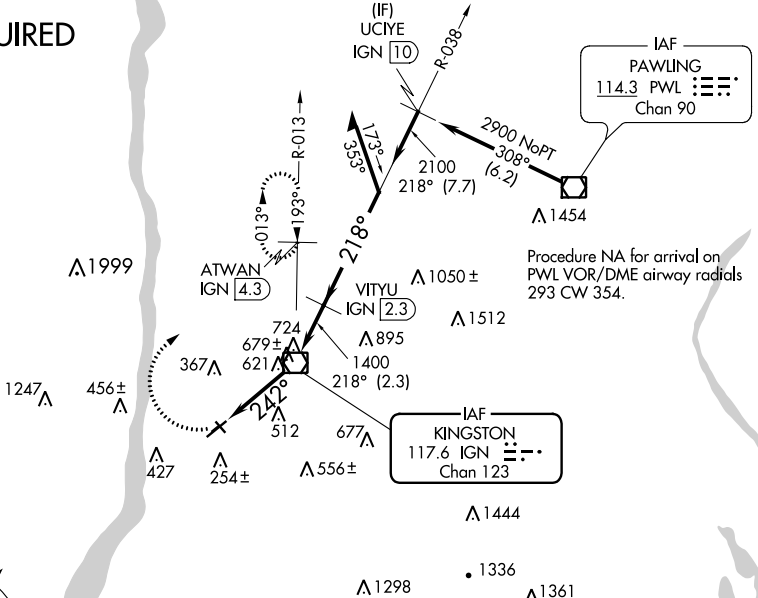
HUDSON VALLEY RGNL (POU)

⚠ Circling NA to Rws 7 and 25. Circling Rwy 15, 33 NA at night. Rwy 24 helicopter visibility reduction below $\frac{3}{4}$ SM NA. Rwy 15, 33 helicopter visibility reduction below 1 NA. DME required. When local altimeter not received, use Montgomery altimeter setting and increase all MDAs 80 feet and Circling visibility Cat A $\frac{1}{4}$ SM.

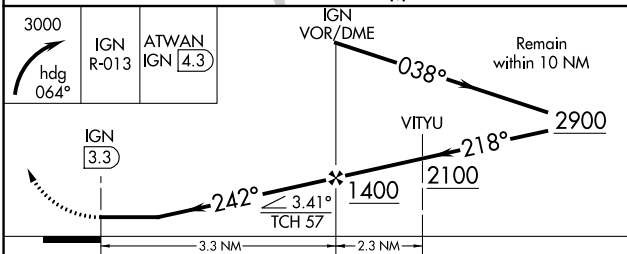
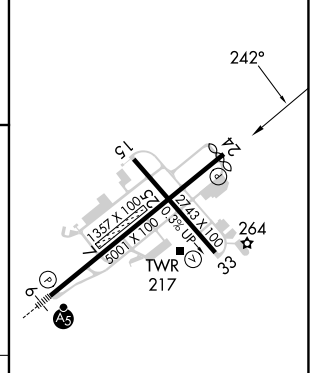
MISSED APPROACH: Climbing right turn to 3000 on heading 064° and IGN VOR/DME R-013 to ATWAN/4.3 DME and hold, continue climb-in-hold to 3000.

ATIS 126.75	NEW YORK APP CON 132.75 363.1	DUTCHESS COUNTY TOWER * 124.0 (CTAF) 0 269.15	GND CON 121.8	CLNC DEL 121.8	UNICOM 122.95
-----------------------	---	---	-------------------------	--------------------------	-------------------------

DME REQUIRED



ELEV 164	D TDZE 157
----------	-------------------



CATEGORY	A	B	C	D
S-24	940-1 783 (800-1)	940-1 1/4 783 (800-1 1/4)	940-2 1/2	783 (800-2 1/2)
CIRCLING	940-1 776 (800-1)	940-1 1/4 776 (800-1 1/4)	940-2 1/2 776 (800-2 1/2)	1080-3 916 (1000-3)

MRL Rwy 15-33
HRL Rwy 6-24
REIL Rwy 24
REIL Rwy 33

NE-2, 22 FEB 2024 to 21 MAR 2024

NE-2, 22 FEB 2024 to 21 MAR 2024

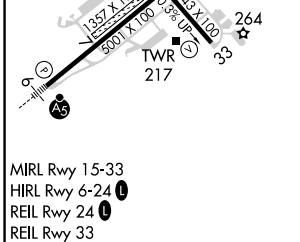
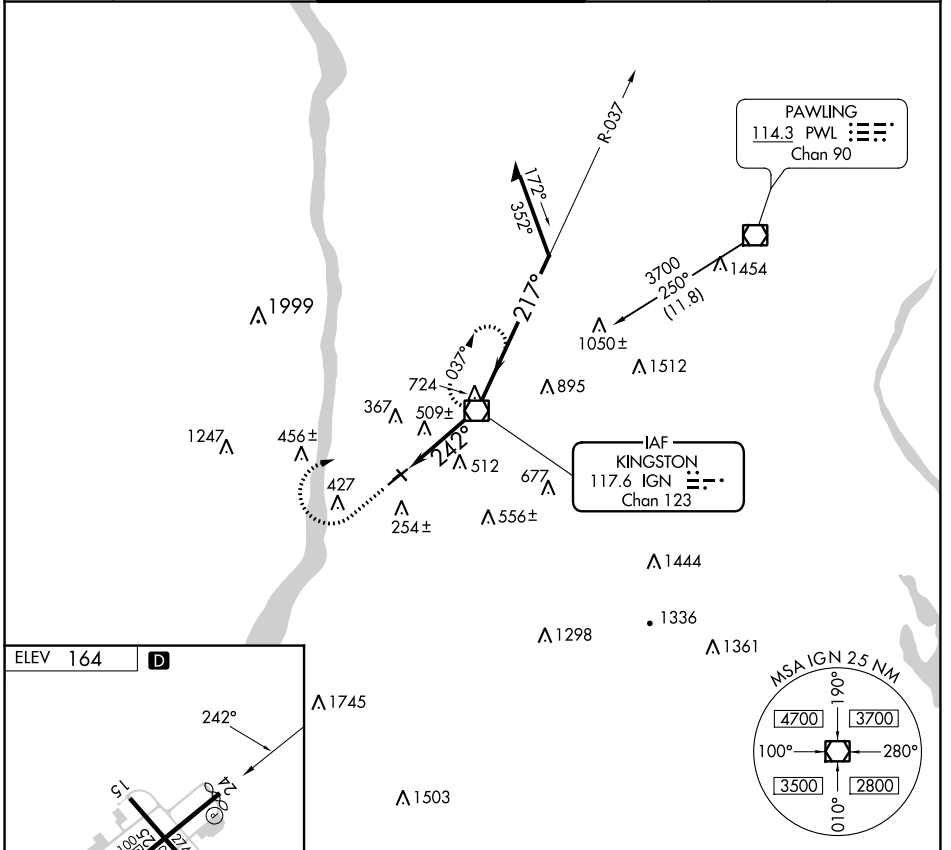
VOR/DME IGN 117.6 Chan 123	APP CRS 242°	Rwy Idg TDZE Apt Elev 164	N/A N/A 164
--	------------------------	---	--

VOR-A

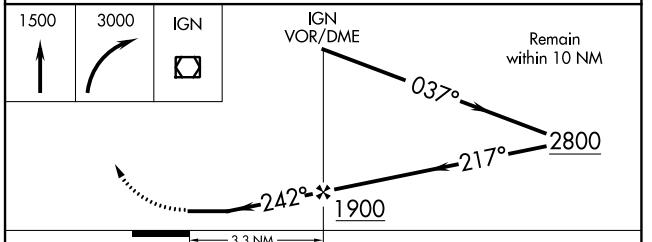
HUDSON VALLEY RGNL (POU)

<p>⚠ Circling NA to Rwys 7 and 25. Circling Rwy 15, 33 NA at night. Rwy 15, 33 helicopter visibility reduction below 1 SM NA. When local altimeter not received, use Montgomery altimeter setting and increase all MDAs 80 feet and visibility Cat C ¼ SM.</p>	<p>MISSED APPROACH: Climb to 1500 then climbing right turn to 3000 direct IGN VOR/DME and hold, continue climb-in-hold to 3000.</p>
---	---

ATIS 126.75	NEW YORK APP CON 132.75 363.1	DUTCHESS COUNTY TOWER * 124.0 (CTAF) 0 269.15	GND CON 121.8	CLNC DEL 121.8	UNICOM 122.95
-----------------------	---	--	-------------------------	--------------------------	-------------------------



MIRL Rwy 15-33
HIRL Rwy 6-24
REIL Rwy 24
REIL Rwy 33



FAF to MAP 3.3 NM					
Knots	60	90	120	150	180
Min:Sec	3:18	2:12	1:39	1:19	1:06
CATEGORY	A	B	C	D	
CIRCLING	760-1 596 (600-1)	840-1 676 (700-1)	940-2¼ 776 (800-2¼)	1080-3 916 (1000-3)	

VOR-A

NE-2, 22 FEB 2024 to 21 MAR 2024

NE-2, 22 FEB 2024 to 21 MAR 2024