

LOC/DME I-PRC 108.5 Chan 22	APP CRS 208°	Rwy Idg TDZE Apt Elev	7619 4977 5045
--	------------------------	-----------------------------	---

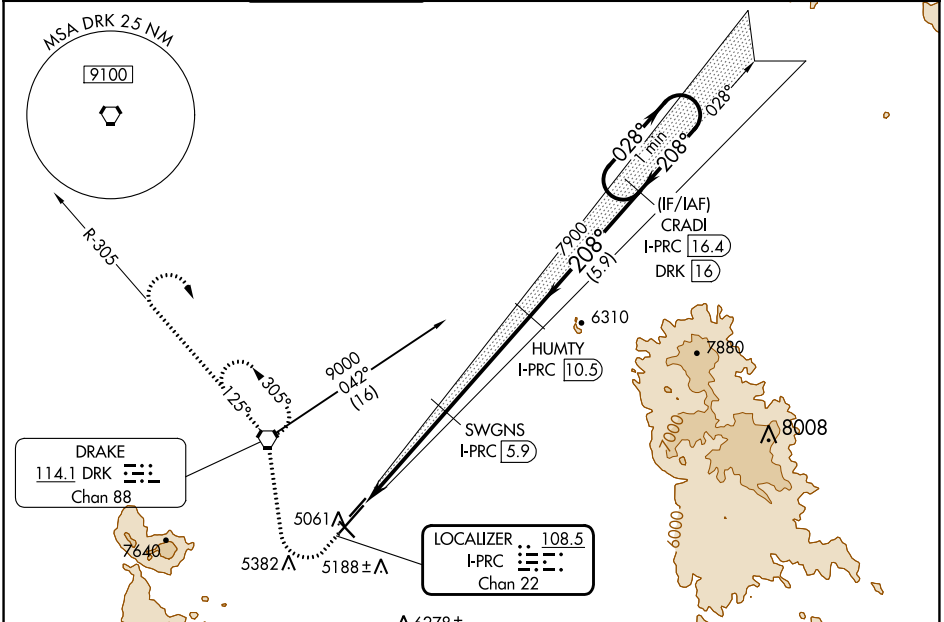
ILS or LOC/DME RWY 21L

PRESCOTT RGNL-ERNEST A LOVE FLD (PRC)

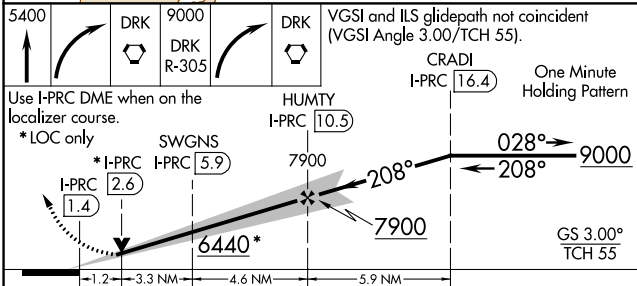
⚠ Circling Rwy 3L, 12, 30 NA at night.

MALSR
AS
MISSED APPROACH: Climb to 5400 then climbing right turn direct DRK VORTAC and DRK VORTAC R-305 to 9000, then right turn direct DRK VORTAC and hold.

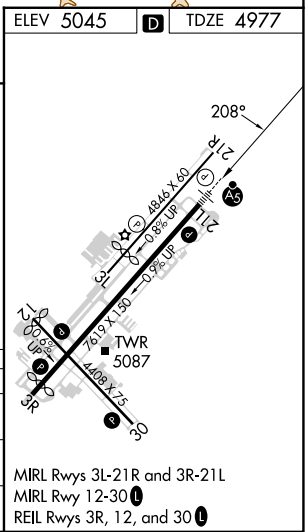
ATIS 127.2	PHOENIX APP CON 133.575 281.55	PRESCOTT TOWER * 125.3 (CTAF) 257.9	GND CON 121.7	CLNC DEL 119.25	128.75 (12-30) 125.3 (CTAF) (3R-21L)	UNICOM 122.95
----------------------	--	--	-------------------------	---------------------------	---	-------------------------



ELEV 5045	D	TDZE 4977
-----------	----------	-----------



CATEGORY	A	B	C	D
S-ILS 21L	5177-1/2		200 (200-1/2)	
S-LOC 21L	5380-1/2	403 (400-1/2)	5380-3/4	403 (400-3/4)
C CIRCLING	5540-1 495 (500-1)	5760-1 715 (800-1)	6080-3 1035 (1100-3)	6680-3 1635 (1700-3)



SW-4, 22 FEB 2024 to 21 MAR 2024

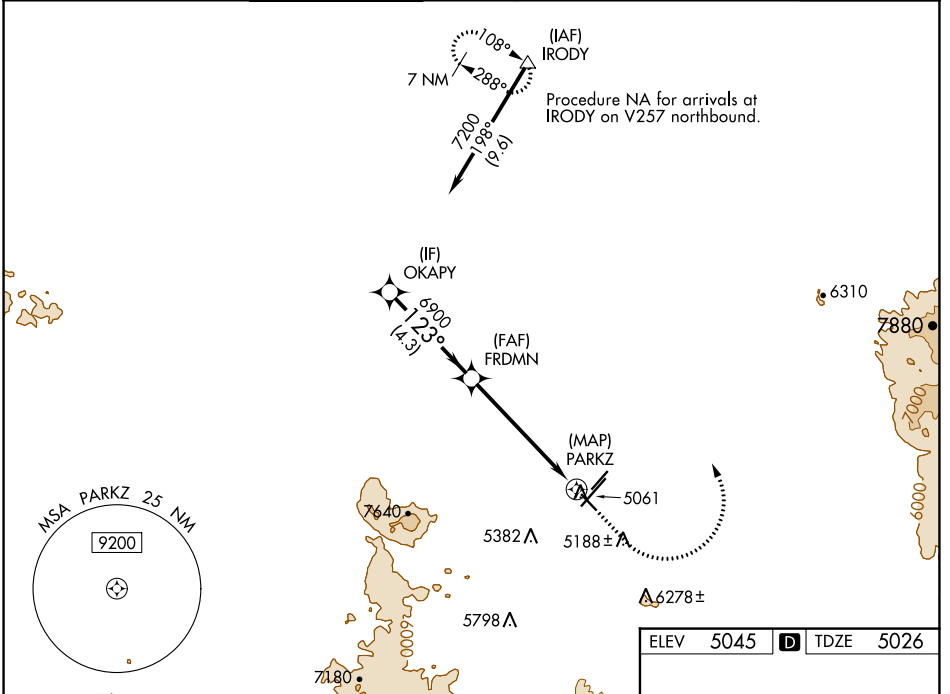
SW-4, 22 FEB 2024 to 21 MAR 2024

WAAS CH 49235 W12A	APP CRS 123°	Rwy Idg TDZE Apt Elev	4258 5026 5045
--	------------------------	-----------------------------	---

RNAV (GPS) RWY 12

PRESCOTT RGNL-ERNEST A LOVE FLD (PRC)

RNP APCH.				MISSED APPROACH: Climb to 5500 then climbing left turn to 9000 direct IRODY and hold, continue climb-in-hold to 9000.		
<p>▼ For uncompensated Baro-VNAV systems, LNAV/VNAV NA below -11°C or above 49°C. Rwy 12 helicopter visibility reduction below 1 SM NA. Straight-in Rwy 12 NA at night, Circling Rwy 12, 3L, 30 NA at night.</p>						
ATIS 127.2	PHOENIX APP CON 133.575 281.55	PRESCOTT TOWER * 125.3 (CTAF) 257.9	GND CON 121.7	CLNC DEL 119.25	128.75 (12-30) 125.3 (CTAF) (3R-21L)	UNICOM 122.95

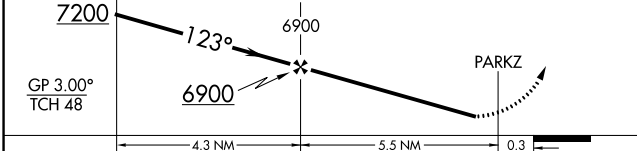


SW-4, 22 FEB 2024 to 21 MAR 2024

SW-4, 22 FEB 2024 to 21 MAR 2024

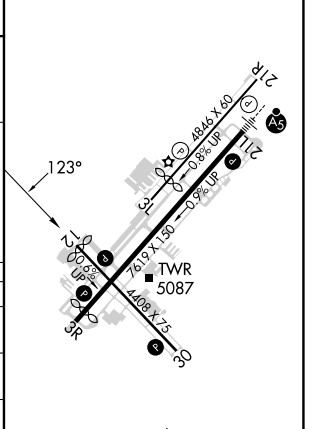
VGSI and RNAV glidepath not coincident (VGSI Angle 4.24/TCH 52).

OKAPY	FRDMN	IRODY
7200	6900	5500 / 9000



ELEV 5045	TDZE 5026
-----------	-----------

CATEGORY	A	B	C	D
LPV DA	5276-1		250 (300-1)	
LNAV/VNAV DA	5432-1 3/8		406 (400-1 3/8)	
LNAV MDA	5520-1	494 (500-1)	5520-1 3/8	494 (500-1 3/8)
CIRCLING	5520-1 475 (500-1)	5760-1 715 (800-1)	6080-3 1035 (1100-3)	6680-3 1635 (1700-3)



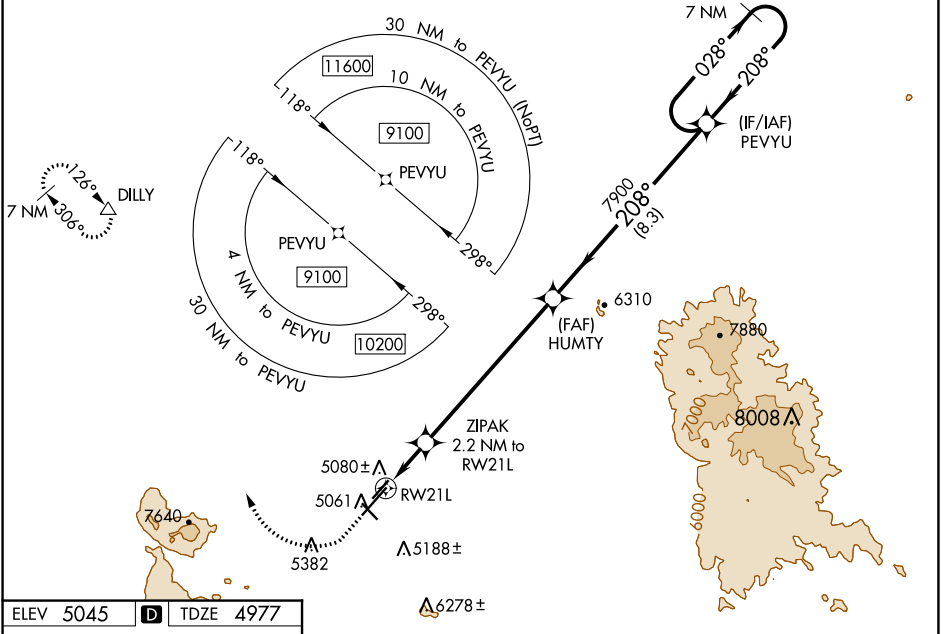
MIRL Rwy 3L-21R and 3R-21L
MIRL Rwy 12-30
REIL Rwy 3R, 12, and 30

WAAS CH 40002 W21A	APP CRS 208°	Rwy Idg TDZE Apt Elev	7619 4977 5045
--	------------------------	-----------------------------	---

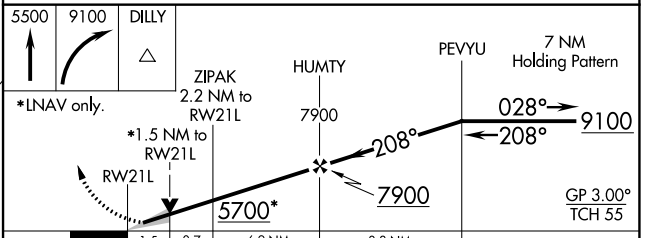
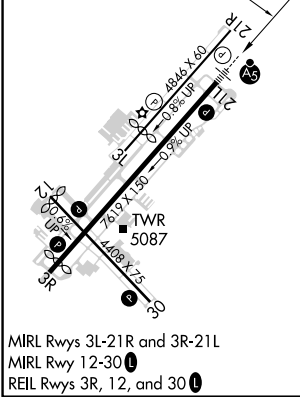
RNAV (GPS) RWY 21L

PRESCOTT RGNL-ERNEST A LOVE FLD (P.R.C)

RNP APCH - GPS.				MALSR		MISSED APPROACH: Climb to 5500 then climbing right turn to 9100 direct DILLY and hold, continue climb-in-hold to 9100.	
⚠ For uncompensated Baro-VNAV systems, LNAV/VNAV NA below -11°C or above 47°C. For inoperative ALS, increase LPV all Cats visibility to 1 SM, LNAV/VNAV all Cats visibility to 1½ SM, and LNAV Cat C/D visibility to 1¾ SM. Circling Rwy 3L, 12, 30 NA at night. # Missed approach requires a minimum climb of 345 feet per NM to 7300.							
ATIS 127.2	PHOENIX APP CON 133.575 281.55	PRESCOTT TOWER * 125.3 (CTAF) 257.9	GND CON 121.7	CLNC DEL 119.25	128.75 (12-30) 125.3 (CTAF) (3R-21L)	UNICOM 122.95	



ELEV 5045	D	TDZE 4977
-----------	----------	-----------



CATEGORY	A	B	C	D
LPV DA	# 5177-½ 200 (200-½)			
LPV DA	5277-½ 300 (300-½)			
LNAV/VNAV DA	5391-¾ 414 (400-¾)			
LNAV MDA	5480-½ 503 (500-½)	5480-1 503 (500-1)		
CIRCLING	5520-1 475 (500-1)	5760-1 715 (800-1)	6080-3 1035 (1100-3)	6680-3 1635 (1700-3)

SW-4, 22 FEB 2024 to 21 MAR 2024

SW-4, 22 FEB 2024 to 21 MAR 2024

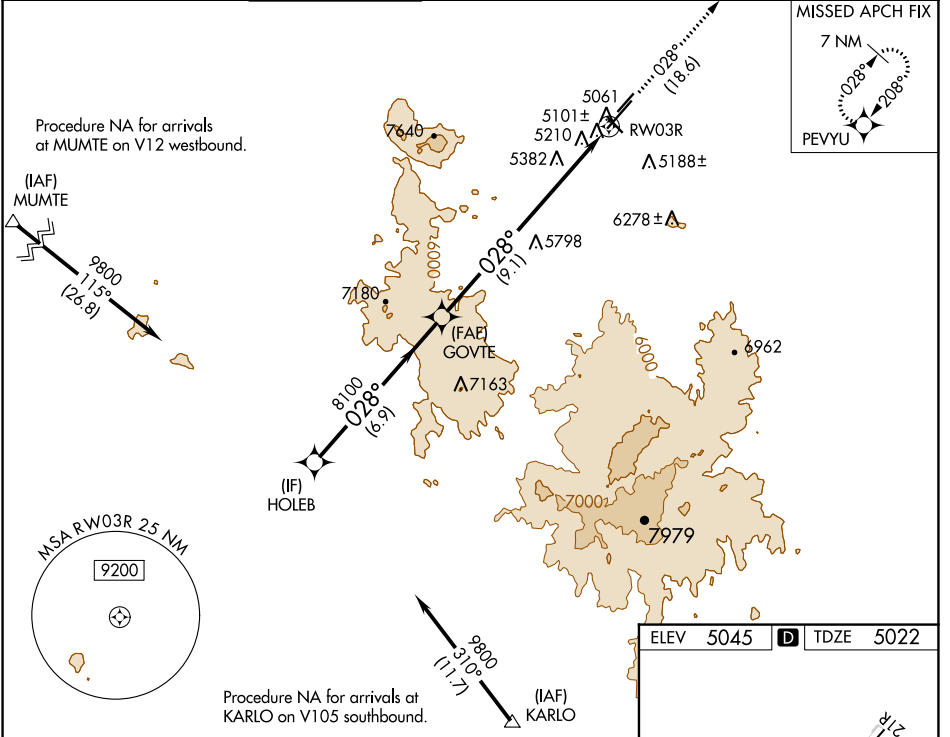
APP CRS	Rwy Idg	7239
028°	TDZE	5022
	Apt Elev	5045

RNAV (RNP) Z RWY 3R

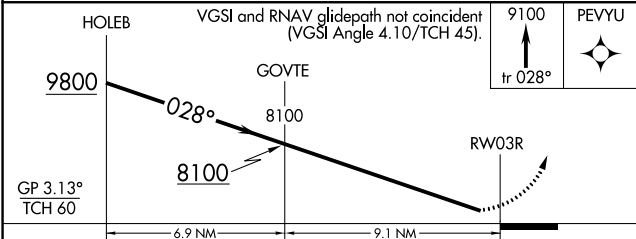
PRESCOTT RGNL-ERNEST A LOVE FLD (P.R.C.)

RNP AR APCH.			MISSED APPROACH: Climb to 9100 on track 028° direct PEVYU and hold.		
For uncompensated Baro-VNAV systems, procedure NA below -11°C or above 54°C.					

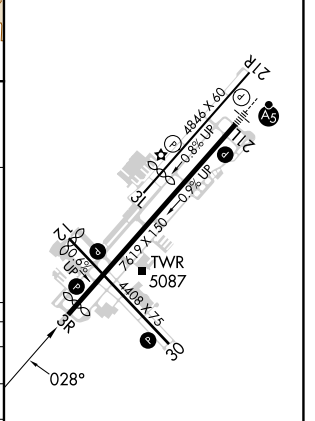
ATIS	PHOENIX APP CON	PRESCOTT TOWER * 125.3 (CTAF) 257.9	GND CON	CLNC DEL	128.75 (12-30) 125.3 (CTAF) (3R-21L)	UNICOM 122.95
127.2	133.575 281.55		121.7	119.25		



ELEV	5045	D	TDZE	5022
------	------	---	------	------



CATEGORY	A	B	C	D
RNP 0.15 DA	5376-1½	354 (400-1½)		NA
RNP 0.30 DA	5540-1½	518 (500-1½)		NA



AUTHORIZATION REQUIRED

MIRL Rwy 3L-21R and 3R-21L
MIRL Rwy 12-30
REIL Rwy 3R, 12, and 30

SW-4, 22 FEB 2024 to 21 MAR 2024

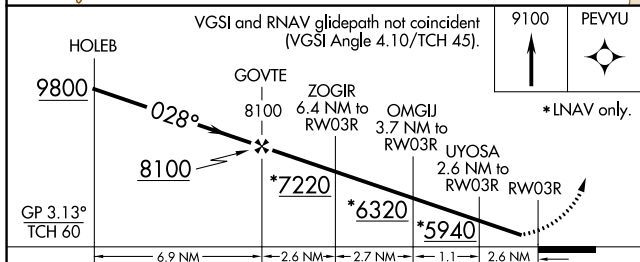
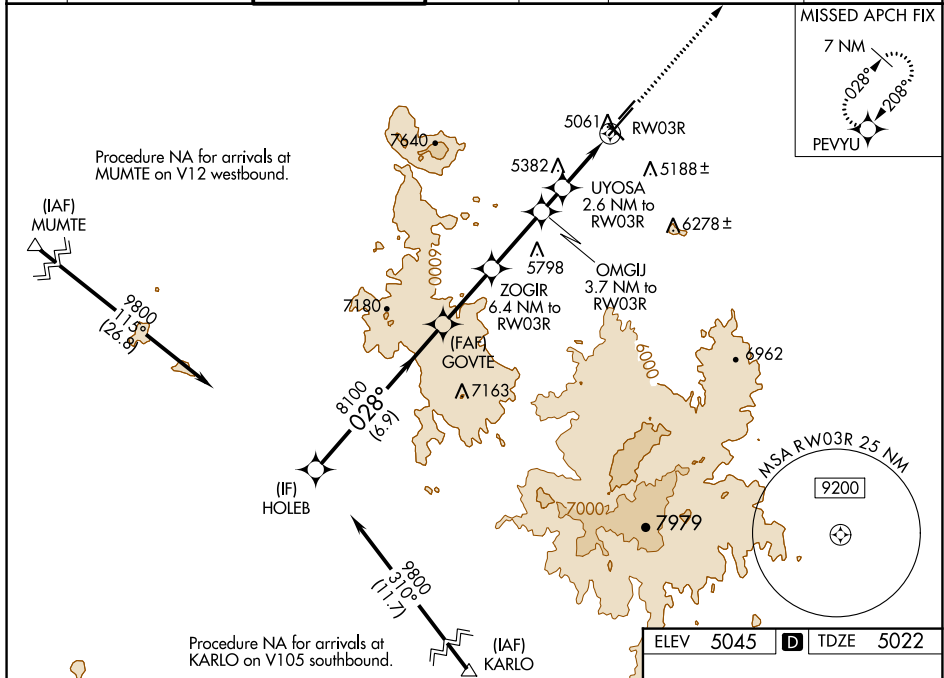
SW-4, 22 FEB 2024 to 21 MAR 2024

WAAS CH 45835 W03B	APP CRS 028°	Rwy Idg TDZE Apt Elev	7239 5022 5045
--	------------------------	-----------------------------	---

RNAV (GPS) Y RWY 3R

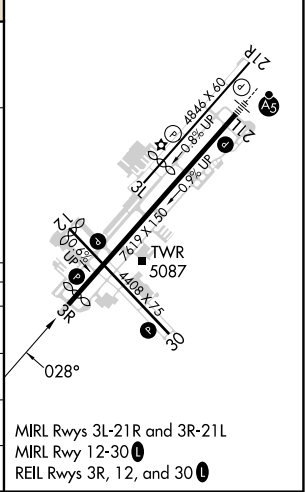
PRESCOTT RGNL-ERNEST A LOVE FLD (P.R.C)

RNP APCH.		MISSED APPROACH: Climb to 9100 direct PEVYU and hold.						
<p>▼ Baro-VNAV NA. ▲ Rwy 3R helicopter visibility reduction below ¾ SM NA. Circling Rwy 3L, 12, 30 NA at night.</p>		ATIS 127.2	PHOENIX APP CON 133.575 281.55	PRESCOTT TOWER * 125.3 (CTAF) 257.9	GND CON 121.7	CLNC DEL 119.25	128.75 (12-30) 125.3 (CTAF) (3R-21L)	UNICOM 122.95



ELEV 5045	TDZE 5022
-----------	-----------

CATEGORY	A	B	C	D
LPV DA	5311-1 289 (300-1)			NA
LNAV/VNAV DA	5549-1 527 (600-1 5/8)			NA
LNAV MDA	5640-1 618 (600-1)		5640-1 618 (600-1 3/4)	NA
CIRCLING	5640-1 595 (600-1)	5760-1 715 (800-1)	6080-3 1035 (1100-3)	6680-3 1635 (1700-3)



SW-4, 22 FEB 2024 to 21 MAR 2024

SW-4, 22 FEB 2024 to 21 MAR 2024

VORTAC DRK 114.1 Chan 88	APP CRS 125°	Rwy Idg 4258 TDZE 5027 Apt Elev 5045
--	------------------------	---

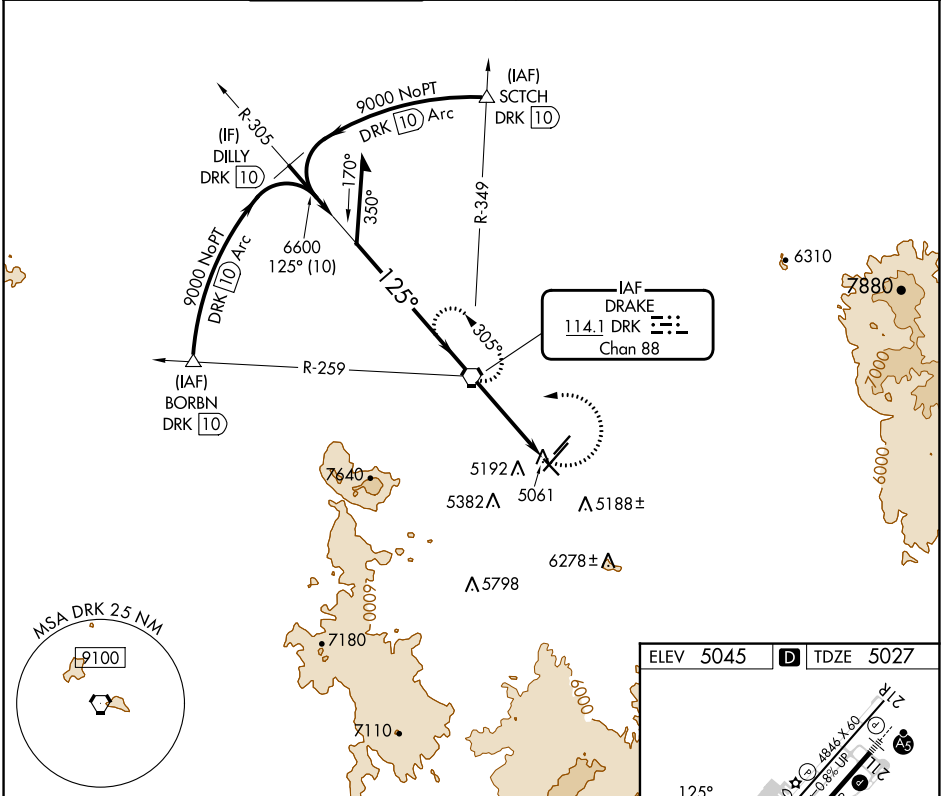
VOR RWY 12

PRESCOTT RGNL-ERNEST A LOVE FIELD (P.R.C)

⚠ Rwy 12 helicopter visibility reduction below 3/4 SM NA.
⚠ Circling Rwy 3L, 30 NA at night.

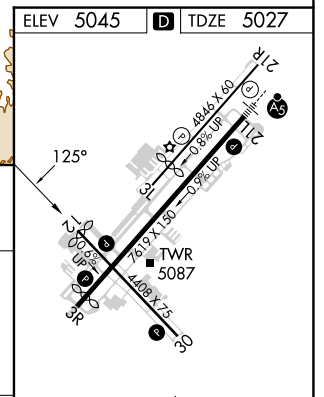
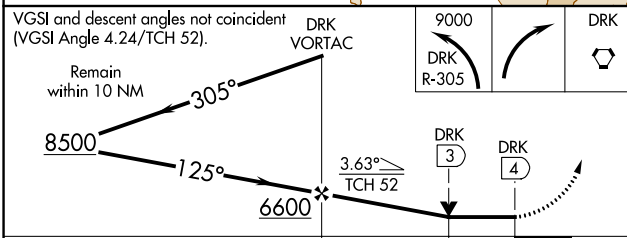
MISSED APPROACH: Climbing left turn to 9000 via DRK VORTAC R-305 then right turn direct DRK VORTAC and hold, continue climb-in-hold to 9000.

ATIS 127.2	PHOENIX APP CON 133.575 281.55	PRESCOTT TOWER * 125.3 (CTAF) 257.9	GND CON 121.7	CLNC DEL 119.25	128.75 (12-30) 125.3 (CTAF) (3R-21L)	UNICOM 122.95
----------------------	--	--	-------------------------	---------------------------	---	-------------------------



SW-4, 22 FEB 2024 to 21 MAR 2024

SW-4, 22 FEB 2024 to 21 MAR 2024



CATEGORY	A	B	C	D
S-12	5460-1	433 (500-1)	5460-1 1/4 433 (500-1 1/4)	NA
C CIRCLING	5520-1 475 (500-1)	5760-1 715 (800-1)	6080-3 1035 (1100-3)	NA

MIRL Rwy 3L-21R and 3R-21L					
MIRL Rwy 12-30					
REIL Rwy 3R, 12, and 30					
FAF to MAP 4 NM					
Knots	60	90	120	150	180
Min:Sec	4:00	2:40	2:00	1:36	1:20