

PITTSBURG, KANSAS

AL-981 (FAA)

22195

WAAS CH 61130 W17A	APP CRS 168°	Rwy Idg TDZE Apt Elev	6100 936 946
--	------------------------	-----------------------------	---

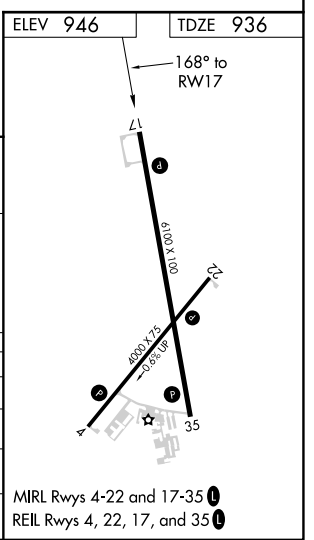
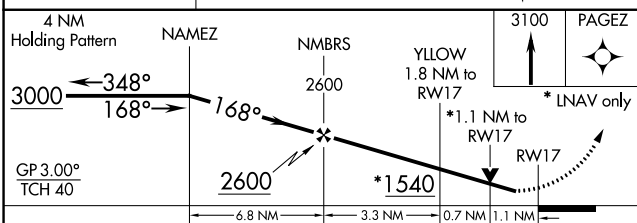
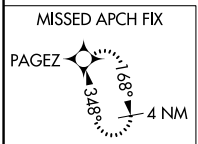
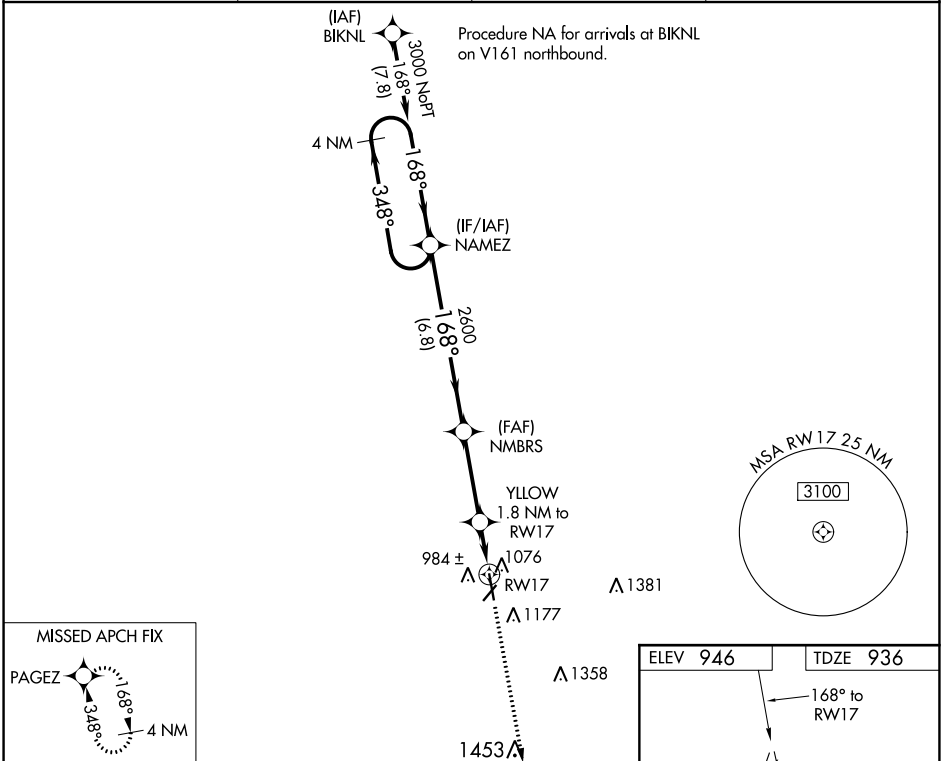
RNAV (GPS) RWY 17

ATKINSON MUNI (PTS)

⚠ For uncompensated Baro-VNAV systems, LNAV/VNAV NA below -16°C (4°F) or above 54°C (130°F). DME/DME RNP-0.3 NA. Rwy 17 helicopter visibility reduction below ¾ SM NA.

MISSED APPROACH: Climb to 3100 direct PAGEZ and hold.

AWOS-3PT 118.775	KANSAS CITY CENTER 128.6 282.325	GCO 121.725	UNICOM 123.0 (CTAF) 0
----------------------------	--	-----------------------	---------------------------------



CATEGORY	A	B	C	D
LPV DA	1216-1 280 (300-1)			
LNAV/VNAV DA	1237-1 301 (300-1)			
LNAV MDA	1340-1 404 (400-1)	1340-1½ 404 (400-1½)		
C CIRCLING	1480-1 534 (600-1)	1520-1½ 574 (600-1½)	1720-2½ 774 (800-2½)	

PITTSBURG, KANSAS
Amdt 3A 01MAR18

37°27'N-94°44'W

RNAV (GPS) RWY 17

ATKINSON MUNI (PTS)

NC-2, 22 FEB 2024 to 21 MAR 2024

NC-2, 22 FEB 2024 to 21 MAR 2024

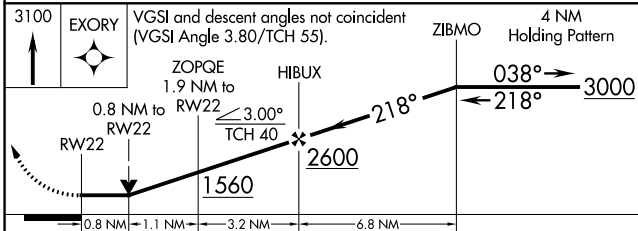
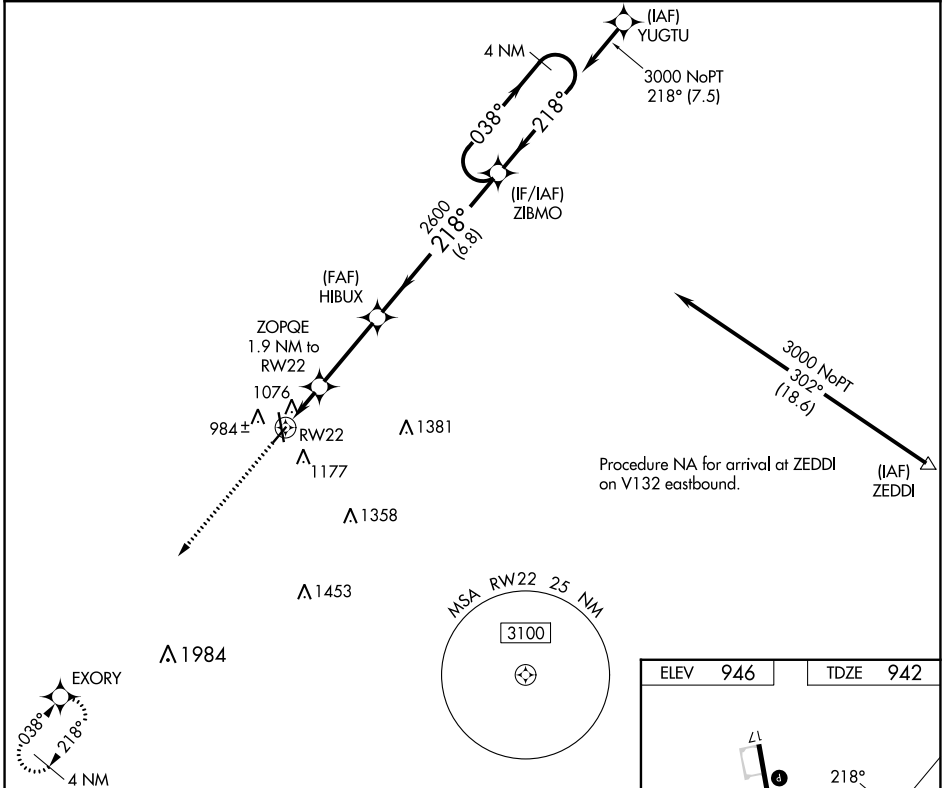
WAAS CH 82430 W22A	APP CRS 218°	Rwy Idg TDZE Apt Elev	4000 942 946
--	------------------------	-----------------------------	---

RNAV (GPS) RWY 22

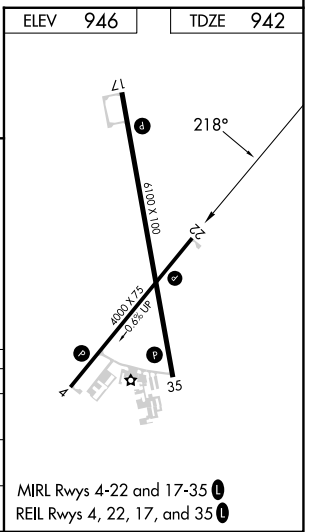
ATKINSON MUNI (PTS)

RNP APCH - GPS.		MISSED APPROACH: Climb to 3100 direct EXORY and hold.	
▼ ▲ Rwy 22 helicopter visibility reduction below 3/4 SM NA.			

AWOS-3PT 118.775	KANSAS CITY CENTER 128.6 282.325	GCO 121.725	UNICOM 123.0 (CTAF) 0
----------------------------	--	-----------------------	---------------------------------



CATEGORY	A	B	C	D
LP MDA	1300-1		358 (400-1)	NA
LNAV MDA	1340-1	398 (400-1)	1340-1 1/8 398 (400-1 1/8)	NA
CIRCLING	1480-1	534 (600-1)	1520-1 1/2 574 (600-1 1/2)	NA



NC-2, 22 FEB 2024 to 21 MAR 2024

NC-2, 22 FEB 2024 to 21 MAR 2024

PITTSBURG, KANSAS

AL-981 (FAA)

22195

WAAS CH 77600 W35A	APP CRS 348°	Rwy Idg 6100 TDZE 929 Apt Elev 946
--	------------------------	---

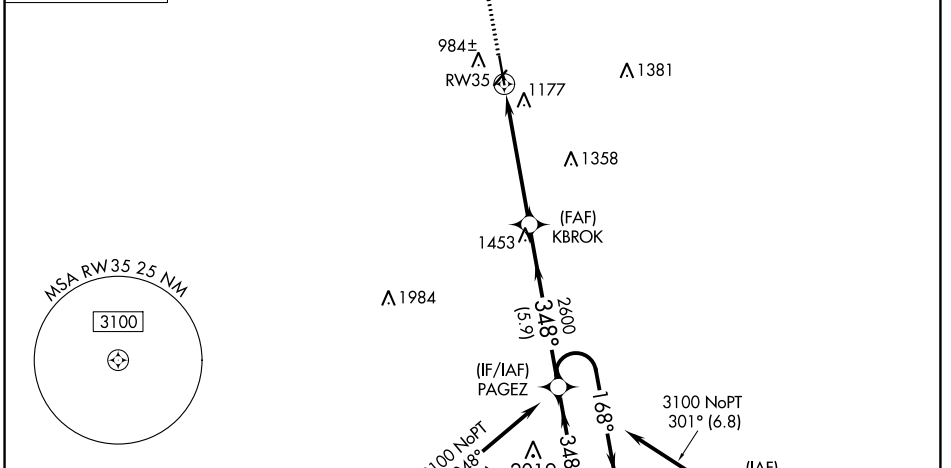
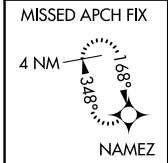
RNAV (GPS) RWY 35

ATKINSON MUNI (PTS)

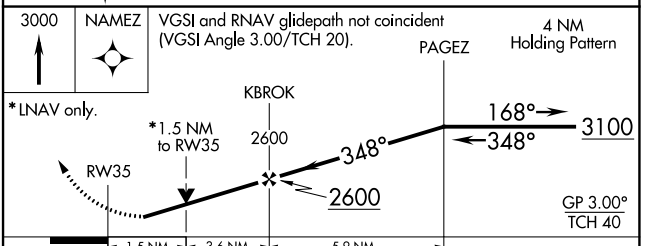
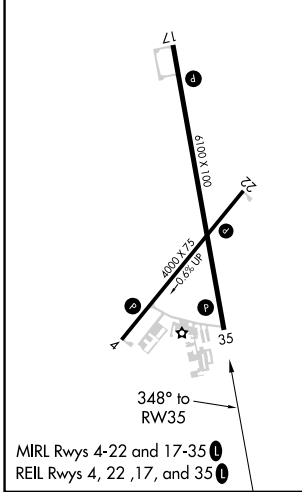
⚠ For uncompensated Baro-VNAV systems, LNAV/VNAV NA below -16°C (4°F) or above 54°C (130°F). Rwy 35 helicopter visibility reduction below ¾ SM NA. DME/DME RNP-0.3 NA.

MISSED APPROACH: Climb to 3000 direct NAMEZ and hold.

AWOS-3PT 118.775	KANSAS CITY CENTER 128.6 282.325	GCO 121.725	UNICOM 123.0 (CTAF) 0
----------------------------	--	-----------------------	---------------------------------



ELEV 946	TDZE 929
-----------------	-----------------



CATEGORY	A	B	C	D
LPV DA	1179-1 250 (300-1)			
LNAV/VNAV DA	1338-1½ 409 (400-1½)			
LNAV MDA	1440-1	511 (500-1)	1440-1¾	511 (500-1¾)
<input checked="" type="checkbox"/> CIRCLING	1480-1	534 (600-1)	1520-1½	1720-2½
			574 (600-1½)	774 (800-2½)

PITTSBURG, KANSAS
Amdt 3 01FEB18

37°27'N-94°44'W

ATKINSON MUNI (PTS) RNAV (GPS) RWY 35

NC-2, 22 FEB 2024 to 21 MAR 2024

NC-2, 22 FEB 2024 to 21 MAR 2024

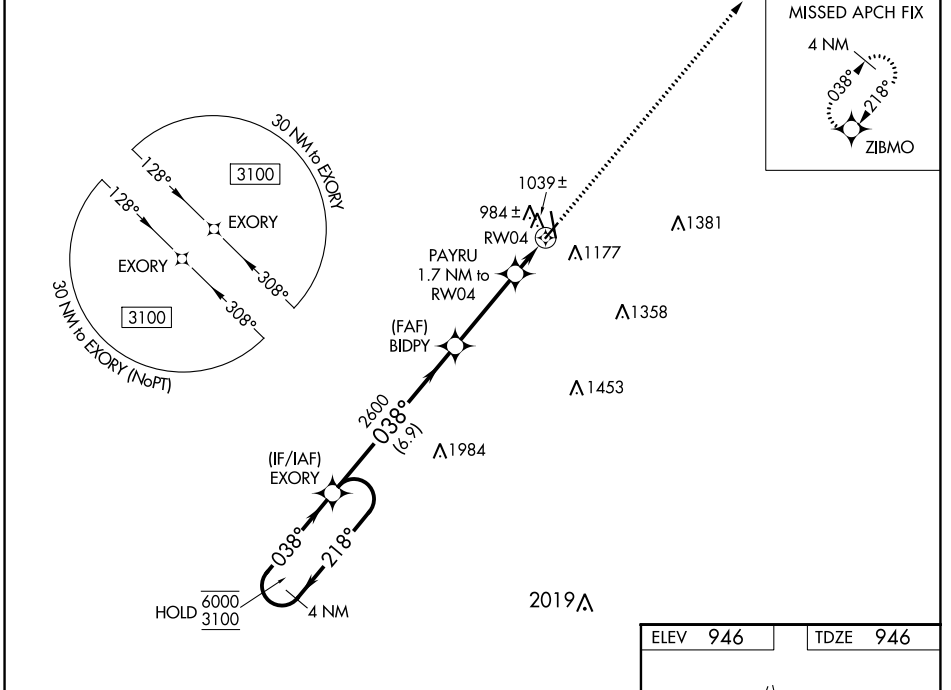
WAAS CH 53430 W04A	APP CRS 038°	Rwy Idg 4000 TDZE 946 Apt Elev 946
--	------------------------	---

RNAV (GPS) RWY 4

ATKINSON MUNI (PTS)

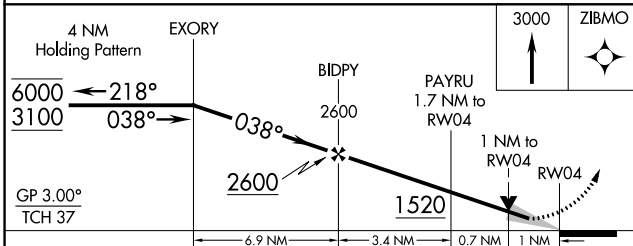
RNP APCH-GPS.	MISSED APPROACH: Climb to 3000 direct ZIBMO and hold.
<p>▼ For uncompensated Baro-VNAV systems, LNAV/VNAV NA below -16°C or above 54°C.</p> <p>▲</p>	

AWOS-3PT 118.775	KANSAS CITY CENTER 128.6 282.325	GCO 121.725	UNICOM 123.0 (CTAF)
----------------------------	--	-----------------------	-------------------------------



NC-2, 22 FEB 2024 to 21 MAR 2024

NC-2, 22 FEB 2024 to 21 MAR 2024



CATEGORY	A	B	C	D
LPV DA		1196-1 250 (300-1)		NA
LNAV/VNAV DA		1196-1 250 (300-1)		NA
LNAV MDA		1300-1 354 (400-1)		NA
C CIRCLING	1480-1 534 (600-1)		1520-1½ 574 (600-1½)	NA

