

LOC I-PTW 108.3	APP CRS 276°	Rwy Idg 3181
		TDZE 308
		Apt Elev 308

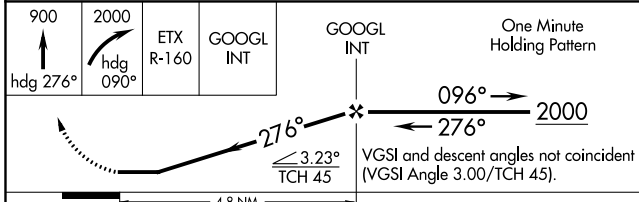
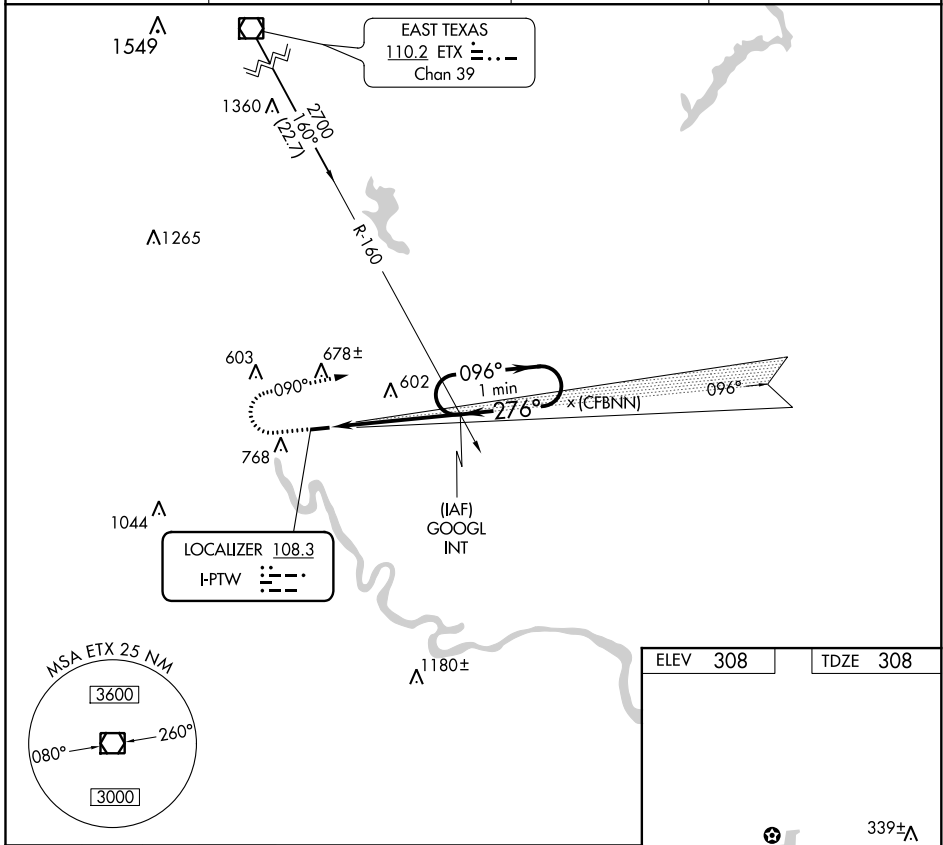
LOC RWY 28

HERITAGE FIELD (PTW)

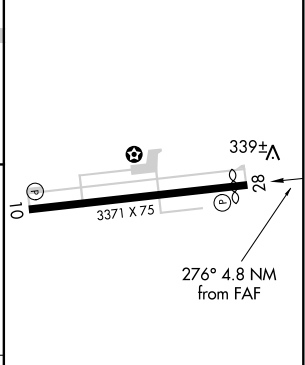
⚠ Circling NA south of Rwy 10-28. When local altimeter setting not received, use Wings Field altimeter setting and increase all MDA 40 feet. Rwy 28 helicopter visibility reduction below 3/4 SM NA.

MISSED APPROACH: Climb to 900 on heading 276° then climbing right turn to 2000 on heading 090° and ETX VOR/DME R-160 to GOOGL Int and hold.

ASOS 119.425	PHILADELPHIA APP CON 126.85 263.125	CLNC DEL 118.55	UNICOM 122.7 (CTAF) 0
------------------------	---	---------------------------	---------------------------------



ELEV 308	TDZE 308
----------	----------



CATEGORY	A	B	C	D
S-28	820-1 512 (600-1)		NA	
C CIRCLING	940-1 632 (700-1)		NA	

MIRL Rwy 10-28 0	
REIL Rws 10 and 28	
FAF to MAP 4.8 NM	
Knots	60 90 120 150 180
Min:Sec	4:48 3:12 2:24 1:55 1:36

NE-4, 17 JUN 2021 to 15 JUL 2021

NE-4, 17 JUN 2021 to 15 JUL 2021

WAAS CH 40235 W28A	APP CRS 276°	Rwy Idg TDZE Apt Elev	3181 308 308
--	------------------------	-----------------------------	---

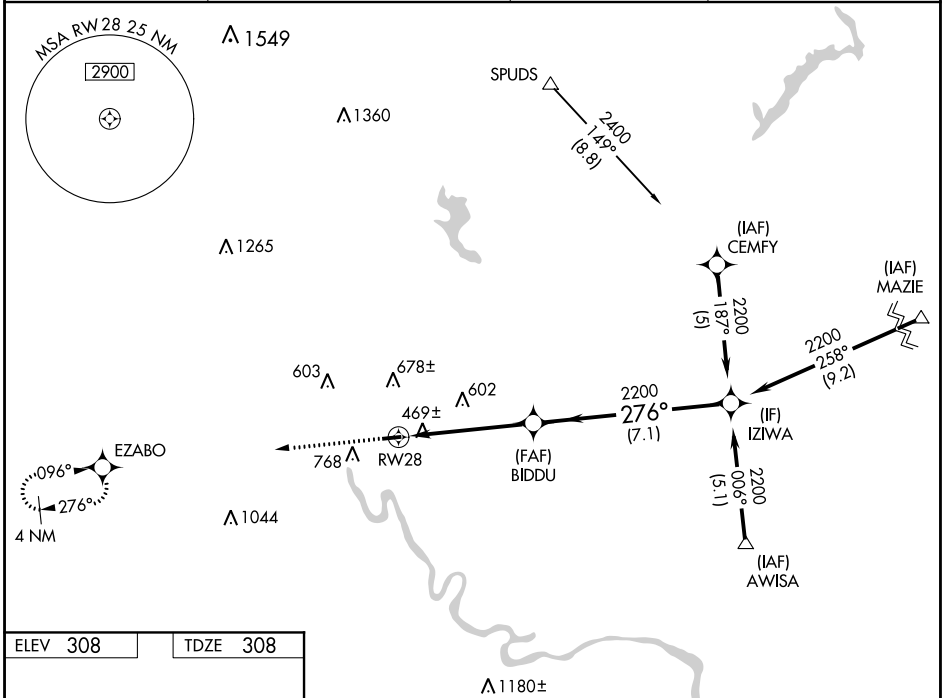
RNAV (GPS) RWY 28

HERITAGE FIELD (PTW)

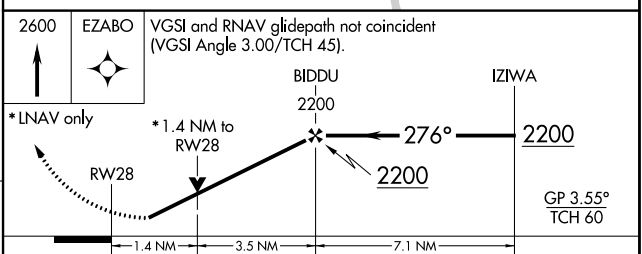
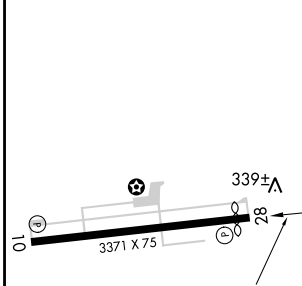
⚠ Circling NA south of Rwy 10-28. DME/DME RNP-0.3 NA. VDP and Baro-VNAV NA when using Wings Field altimeter setting. When local altimeter setting not received, use Wings Field altimeter setting and increase all DA 35 feet and all MDA 40 feet, increase LPV all Cats visibilities 1/8 mile. Helicopter visibility reduction below 3/4 SM NA. For uncompensated Baro-VNAV systems, LNAV/VNAV NA below -15°C (5°F) or above 54°C (130°F).

MISSED APPROACH:
Climb to 2600 direct EZABO and hold.

ASOS 119.425	PHILADELPHIA APP CON 126.85 263.125	CLNC DEL 118.55	UNICOM 122.7 (CTAF) 0
------------------------	---	---------------------------	---------------------------------



ELEV 308	TDZE 308
-----------------	-----------------



CATEGORY	A	B	C	D
LPV DA	652-1	344 (400-1)		NA
LNAV/VNAV DA	779-1 3/8	471 (500-1 3/8)		NA
LNAV MDA	820-1	512 (600-1)		NA
C CIRCLING	940-1	632 (700-1)		NA

MIRL Rwy 10-28 **0**
REL Rwy 10 and 28

NE-4, 17 JUN 2021 to 15 JUL 2021

NE-4, 17 JUN 2021 to 15 JUL 2021

APP CRS 096°	Rwy Idg TDZE Apt Elev	N/A N/A 308
------------------------	-----------------------------	--

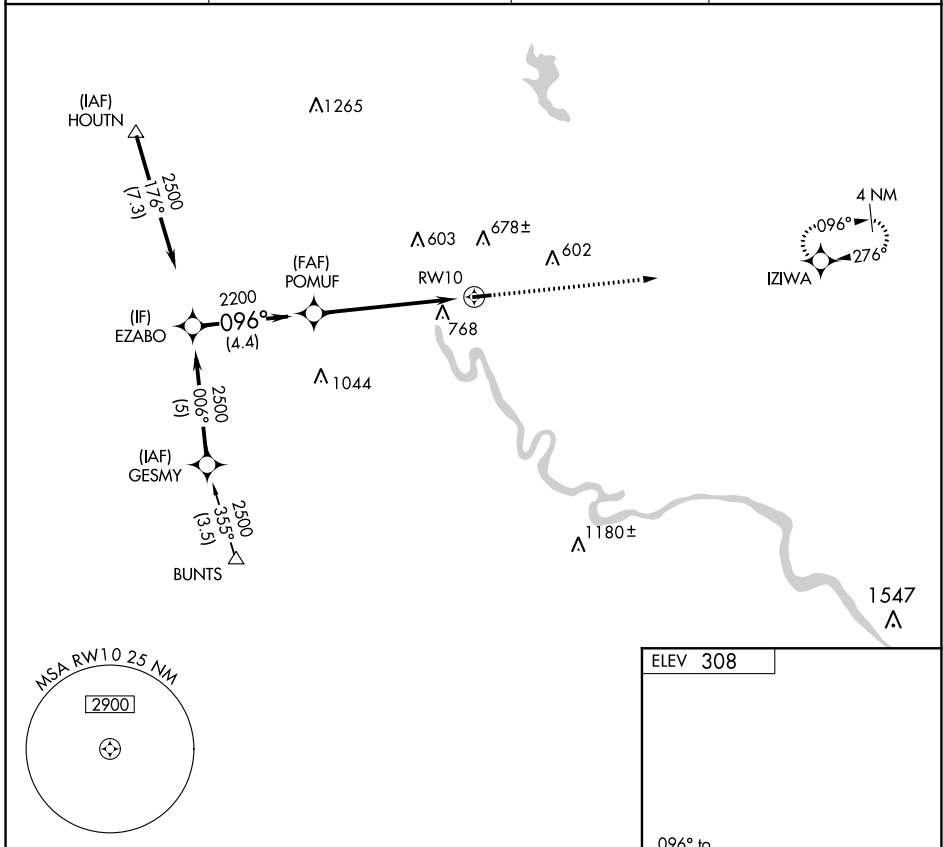
RNAV (GPS)-A

HERITAGE FIELD (PTW)

⚠ When local altimeter setting not received, use Wings Field altimeter setting and increase all MDA 40 feet. Circling NA south of Rwy 10-28.
⚠ DME/DME RNP-0.3 NA.

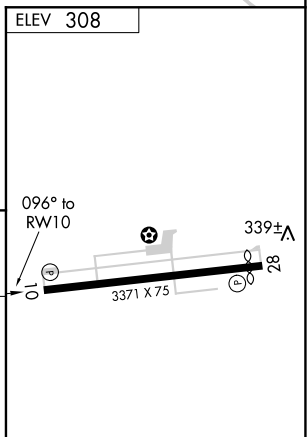
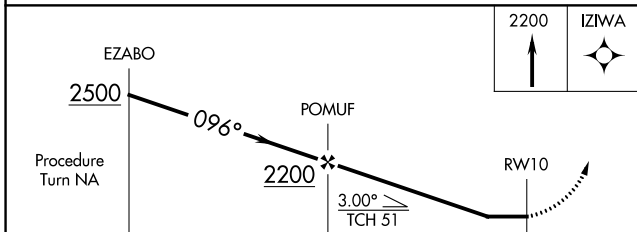
MISSED APPROACH: Climb to 2200 direct IZIWA and hold.

ASOS 119.425	PHILADELPHIA APP CON 126.85 263.125	CLNC DEL 118.55	UNICOM 122.7 (CTAF) 0
------------------------	---	---------------------------	---------------------------------



NE-4, 17 JUN 2021 to 15 JUL 2021

NE-4, 17 JUN 2021 to 15 JUL 2021



CATEGORY	A	B	C	D
C CIRCLING	1020-1	712 (800-1)		NA

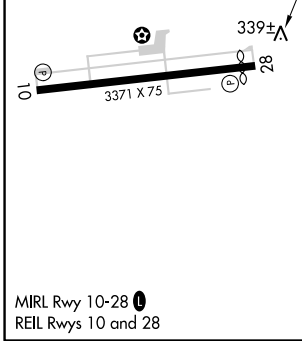
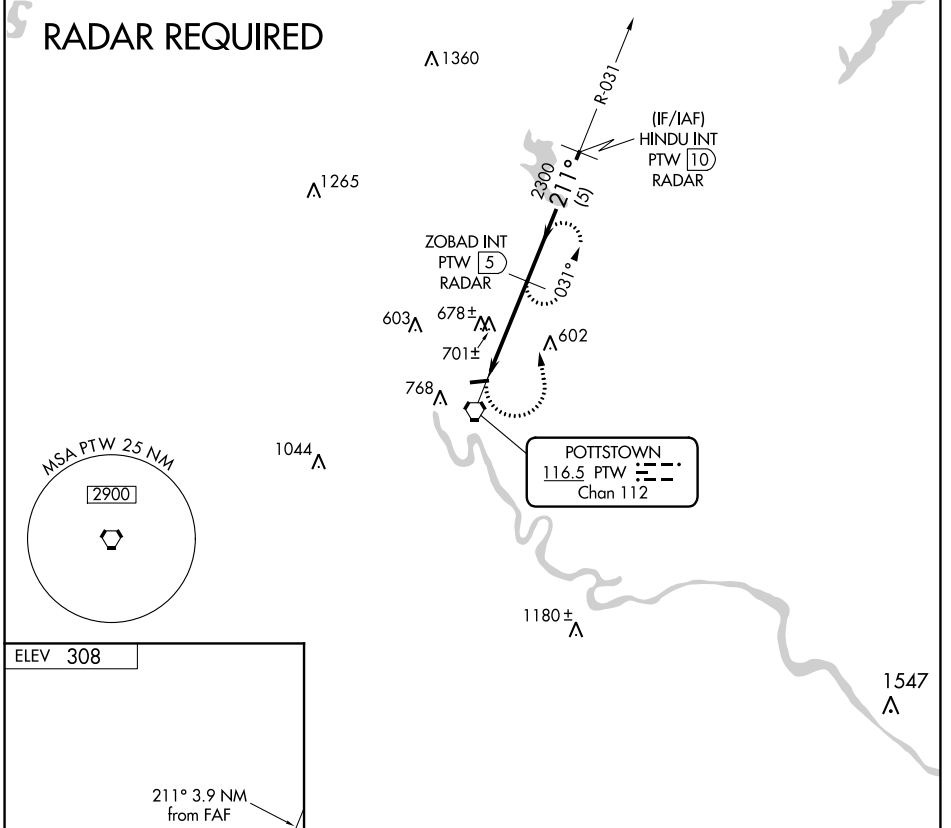
MIRL Rwy 10-28 **0**
REIL Rwy 10 and 28

VORTAC PTW 116.5 Chan 112	APP CRS 211°	Rwy Idg TDZE Apt Elev N/A N/A 308
---	------------------------	--

VOR/DME-A
HERITAGE FIELD (PTW)

<p>⚠ Circling NA south of Rwy 10 and 28 of Rwy. ⚠ When local altimeter setting not received, use Wings Field altimeter setting and increase all MDA 40 feet.</p>	<p>MISSED APPROACH: Climbing left turn to 2300 via PTW VORTAC R-031 to ZOBAD Int/PTW 5 DME/RADAR and hold.</p>
--	--

ASOS 119.425	PHILADELPHIA APP CON 126.85 263.125	CLNC DEL 118.55	UNICOM 122.7 (CTAF) 0
------------------------	---	---------------------------	---------------------------------



<p>2300 PTW R-031</p>	<p>ZOBAD INT PTW 5 RADAR</p>	<p>Visual Segment - Obstacles.</p>	<p>HINDU INT PTW 10 RADAR</p>
<p>PTW 1.2</p>		<p>ZOBAD INT PTW 5 RADAR</p>	<p>2700</p>
<p>3.9 NM</p>		<p>5 NM</p>	<p>Procedure Turn NA</p>
CATEGORY	A	B	C D
C CIRCLING	960-1	652 (700-1)	NA

NE-4, 17 JUN 2021 to 15 JUL 2021

NE-4, 17 JUN 2021 to 15 JUL 2021