

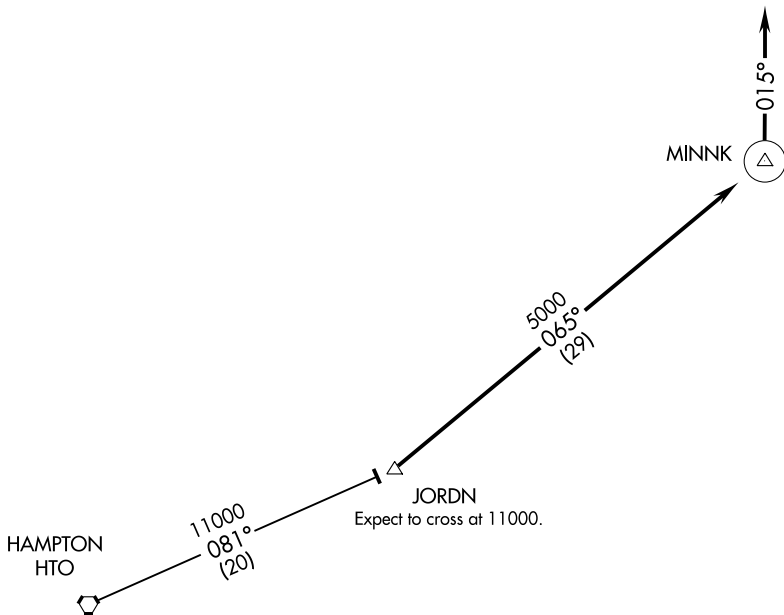
(JORDN.JORDN2) 21280

AL-333 (FAA)

JORDN TWO ARRIVAL (RNAV)

RHODE ISLAND TF GREEN INTL (PVD)
PROVIDENCE, RHODE ISLAND

PROVIDENCE APP CON ★
125.75 385.6
D-ATIS
124.2
PROVIDENCE TOWER ★
120.7 (CTAF)



NOTE: RADAR required.
NOTE: 1. DME/DME/IRU or GPS required.
2. RNAV 1.

NOTE: Chart not to scale.

ARRIVAL ROUTE DESCRIPTION

HAMPTON TRANSITION (HTO..JORDN2):

... From JORDN, via 065° track to MINNK. Depart MINNK heading 015°, expect RADAR vectors to final approach course.

JORDN TWO ARRIVAL (RNAV)

(JORDN.JORDN2) 08JUN06

PROVIDENCE, RHODE ISLAND
RHODE ISLAND TF GREEN INTL (RIC)

NE-1, 22 FEB 2024 to 21 MAR 2024

NE-1, 22 FEB 2024 to 21 MAR 2024

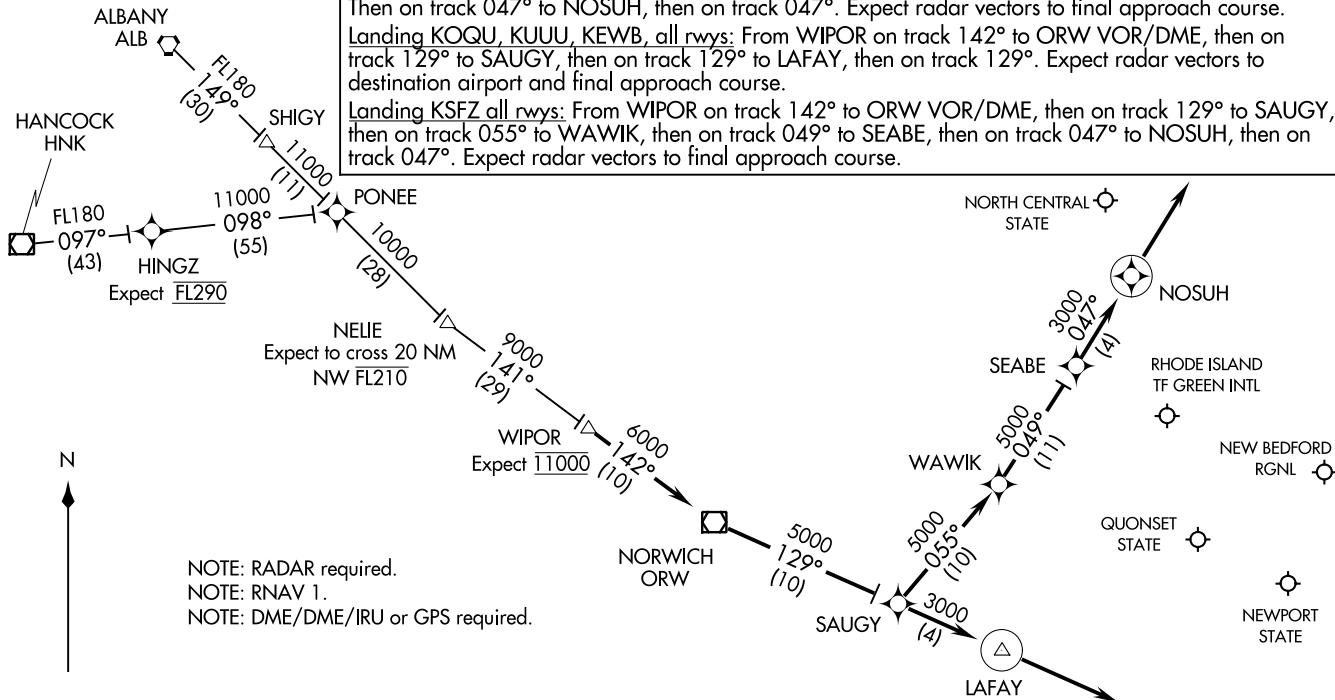
WIPOR THREE ARRIVAL (RNAV)
 (WIPOR.WIPOR3) 13NOV14

PROVIDENCE APP CON★
 123.675 244.875
 EWB ATIS
 126.85
 PVD D-ATIS
 124.2

ALBANY TRANSITION (ALB.WIPOR3):
HANCOCK TRANSITION (HNK.WIPOR3):
HINGZ TRANSITION (HINGZ.WIPOR3):

ARRIVAL ROUTE DESCRIPTION

From WIPOR on track 142° to ORW VOR/DME, then on track 129° to SAUGY.
 Landing KPYD Rwy 5, 34: From SAUGY on track 129° to LAFAY, then on track 129°.
 Expect radar vectors to final approach course.
 Landing KPYD Rwy 16, 23: From SAUGY on track 055° to WAWIK, then on track 049° to SEABE.
 Then on track 047° to NOSUH, then on track 047°. Expect radar vectors to final approach course.
 Landing KOQU, KUUU, KEWB, all rwy: From WIPOR on track 142° to ORW VOR/DME, then on track 129° to SAUGY, then on track 129° to LAFAY, then on track 129°. Expect radar vectors to destination airport and final approach course.
 Landing KSFZ all rwy: From WIPOR on track 142° to ORW VOR/DME, then on track 129° to SAUGY, then on track 055° to WAWIK, then on track 049° to SEABE, then on track 047° to NOSUH, then on track 047°. Expect radar vectors to final approach course.



NOTE: RADAR required.
 NOTE: RNAV 1.
 NOTE: DME/DME/IRU or GPS required.

NOTE: Chart not to scale.

PROVIDENCE, RHODE ISLAND

WIPOR.WIPOR3) 22307
 WIPOR THREE ARRIVAL (RNAV)

AL-333 (FAA)

PROVIDENCE, RHODE ISLAND