

WAAS CH 78324 W05A	APP CRS 049°	Rwy Idg TDZE Apt Elev	3914 2585 2585
----------------------------------------	------------------------	-----------------------------	-------------------------------------------

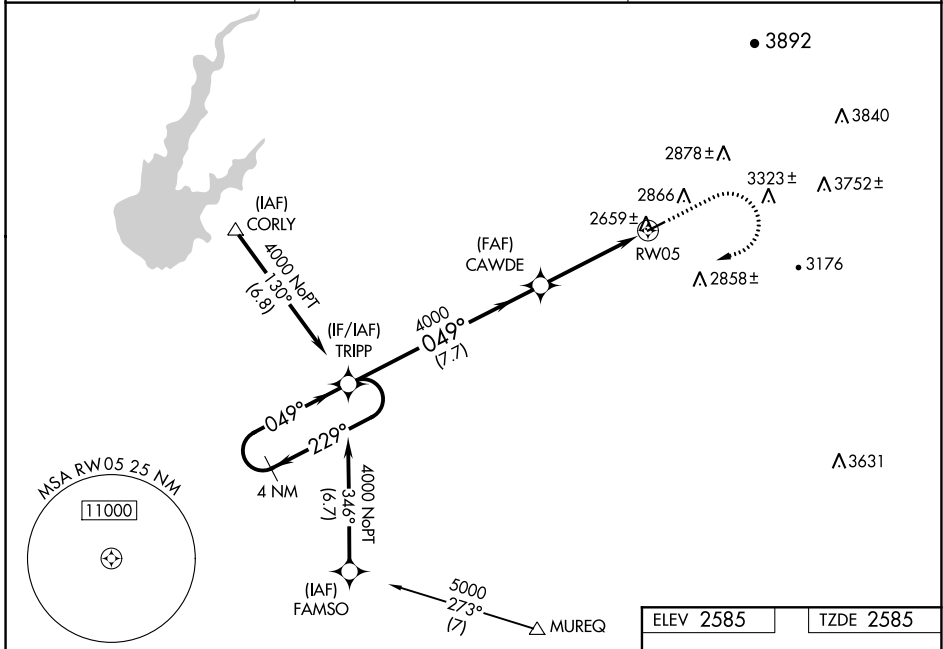
RNAV (GPS) RWY 5

PLACERVILLE (PVF)

⚠ Night landing: Rwy 23 NA. Baro-VNAV NA when using Auburn altimeter setting. For uncompensated Baro-VNAV systems, LNAV/VNAV NA below -20°C (-4°F) or above 54°C (130°F). Circling NA northwest of Rwy 5-23. DME/DME RNP-0.3 NA. VDP NA with Auburn altimeter setting. When local altimeter setting not received, use Auburn altimeter setting and increase all DA/MDA 200 feet, and all visibilities ¾ mile.

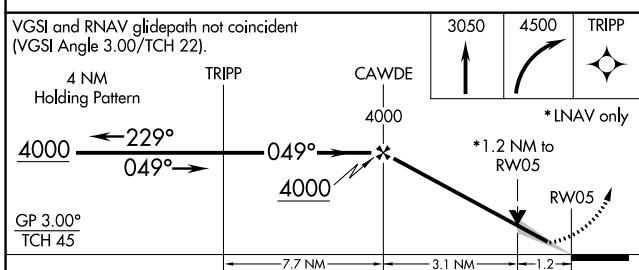
⚠ MISSED APPROACH: Climb to 3050 then climbing right turn to 4500 direct TRIPP and hold.

AWOS-3 128.125	NORCAL APP CON 127.4 317.5	UNICOM 122.8 (CTAF)
--------------------------	--------------------------------------	-------------------------------



SW-2, 13 AUG 2020 to 10 SEP 2020

SW-2, 13 AUG 2020 to 10 SEP 2020



ELEV 2585	TZDE 2585
-----------	-----------

CATEGORY	A	B	C	D
LPV DA	2835-¾	250 (300-¾)		NA
LNAV/VNAV DA	2874-1	289 (300-1)		NA
LNAV MDA	3040-1	455 (500-1)		NA
CIRCLING	3200-1 615 (700-1)	3260-1 675 (700-1)		NA

