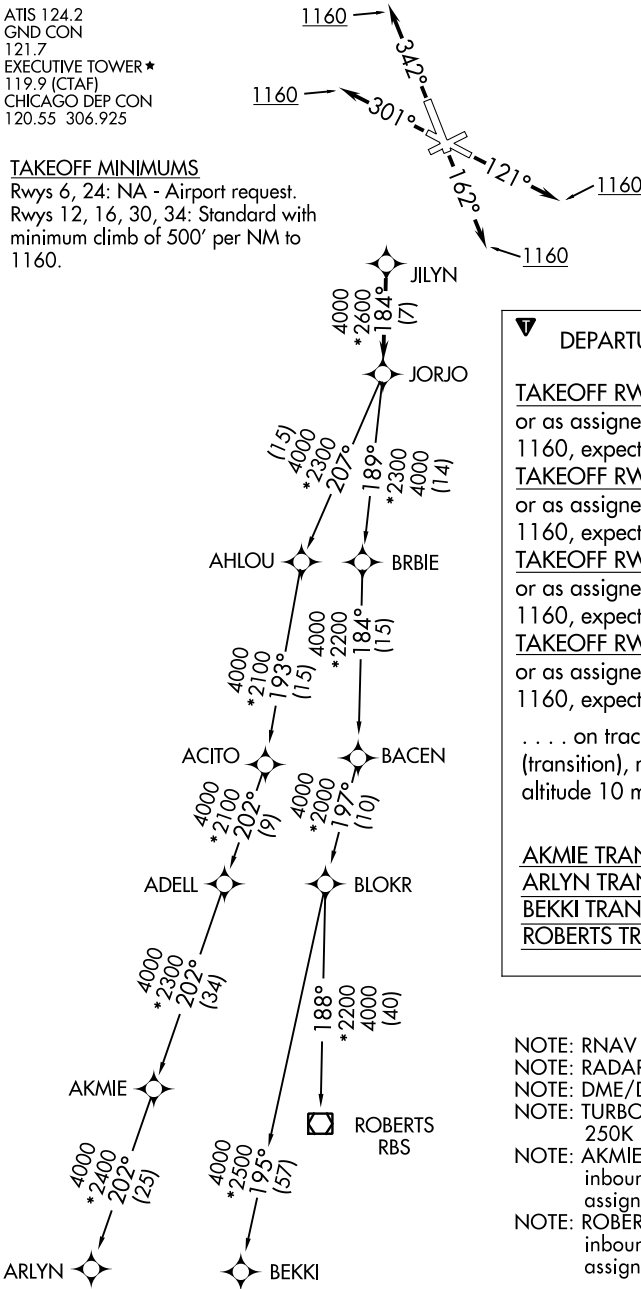


ATIS 124.2
GND CON
121.7
EXECUTIVE TOWER ★
119.9 (CTAF)
CHICAGO DEP CON
120.55 306.925

TAKEOFF MINIMUMS

Rwys 6, 24: NA - Airport request.
Rwys 12, 16, 30, 34: Standard with
minimum climb of 500' per NM to
1160.

TOP ALTITUDE:
3000



DEPARTURE ROUTE DESCRIPTION

TAKEOFF RWY 12: Climb heading 121° or as assigned by ATC to at or above 1160, expect vectors to JILYN. Thence ...
TAKEOFF RWY 16: Climb heading 162° or as assigned by ATC to at or above 1160, expect vectors to JILYN. Thence ...
TAKEOFF RWY 30: Climb heading 301° or as assigned by ATC to at or above 1160, expect vectors to JILYN. Thence ...
TAKEOFF RWY 34: Climb heading 342° or as assigned by ATC to at or above 1160, expect vectors to JILYN. Thence ...
... on track 184° to JORJO, then on (transition), maintain 3000, expect filed altitude 10 minutes after departure.

AKMIE TRANSITION (JORJO5.AKMIE)
ARLYN TRANSITION (JORJO5.ARLYN)
BEKKI TRANSITION (JORJO5.BEKKI)
ROBERTS TRANSITION (JORJO5.RBS)

NOTE: RNAV 1.
NOTE: RADAR required.
NOTE: DME/DME/IRU or GPS required.
NOTE: TURBOJET depatures maintain 250K until advised by ATC.
NOTE: AKMIE transition: for aircraft inbound to BMI, SPI, or PIA, or as assigned by ATC.
NOTE: ROBERTS transition: for aircraft inbound to CMI or STL, or as assigned by ATC.

NOTE: Chart not to scale.

MONKZ FIVE DEPARTURE (RNAV)

8 (FAA) CHICAGO EXEC (PWK)
CHICAGO/PROSPECT HEIGHTS/WHEELING, ILLINOIS

CHICAGO EXEC (PWK)

CHICAGO/PROSPECT HEIGHTS/WHEELING, ILLINOIS

TOP ALTITUDE:
3000

ATIS

124.2

D CON
101.7

EXECUTIVE TOWER ★

119.9 (CTAF)

CHICAGO DEP CON

120.55 306.925

NOTE: RNAV 1.

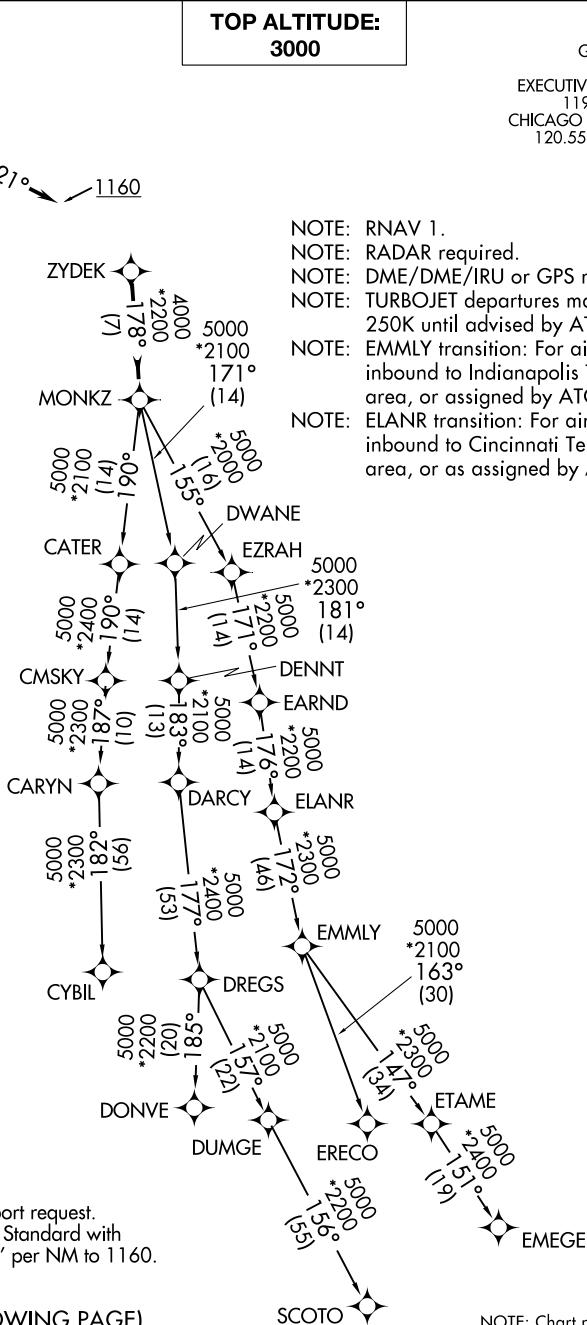
NOTE: RADAR required.

NOTE: DME/DME/IRU or GPS required.

NOTE: TURBOJET departures maintain 250K until advised by ATC.

NOTE: EMMLY transition: For aircraft inbound to Indianapolis Terminal area, or assigned by ATC.

NOTE: ELANR transition: For aircraft inbound to Cincinnati Terminal area, or as assigned by ATC.



TAKEOFF MINIMUMS

Rwys 6, 24: NA - Airport request.

Rwys 12, 16, 30, 34: Standard with minimum climb of 500' per NM to 1160.

(NARRATIVE ON FOLLOWING PAGE)

NOTE: Chart not to scale.

MONKZ FIVE DEPARTURE (RNAV)

CHICAGO/PROSPECT HEIGHTS/WHEELING, ILLINOIS

CHICAGO EXEC (PWK)

(MONKZ5.MONKZ) 01FEB18

EC-3, 22 FEB 2024 to 21 MAR 2024

EC-3, 22 FEB 2024 to 21 MAR 2024



DEPARTURE ROUTE DESCRIPTION

TAKEOFF RWY 12: Climb heading 121° or as assigned by ATC to at or above 1160, expect vectors to ZYDEK, thence

TAKEOFF RWY 16: Climb heading 162° or as assigned by ATC to at or above 1160, expect vectors to ZYDEK, thence

TAKEOFF RWY 30: Climb heading 301° or as assigned by ATC to at or above 1160, expect vectors to ZYDEK, thence

TAKEOFF RWY 34: Climb heading 342° or as assigned by ATC to at or above 1160, expect vectors to ZYDEK, thence

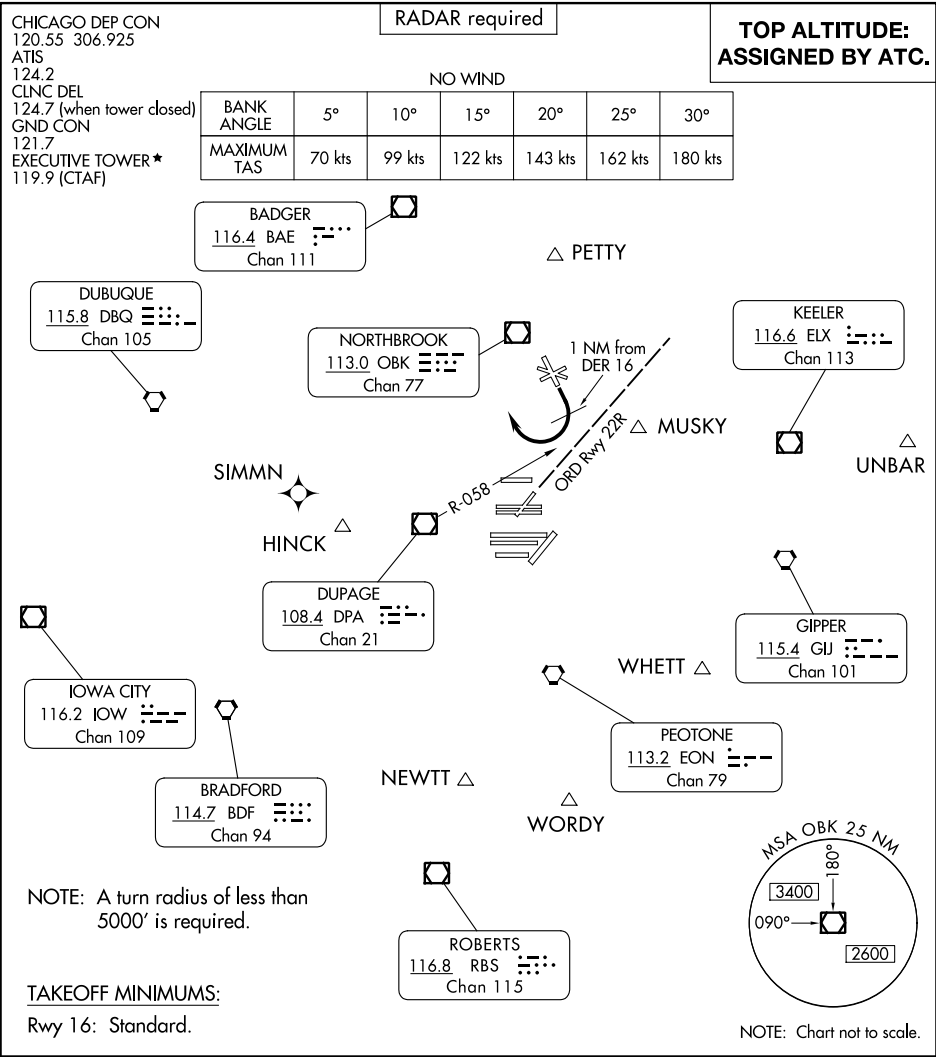
. . . .on track 178° to MONKZ, then on (transition), maintain 3000, expect filed altitude ten minutes after departure.

- CYBIL TRANSITION (MONKZ5.CYBIL)
- DONVE TRANSITION (MONKZ5.DONVE)
- ELANR TRANSITION (MONKZ5.ELANR)
- EMEGE TRANSITION (MONKZ5.EMEGE)
- EMMLY TRANSITION (MONKZ5.EMMLY)
- ERECO TRANSITION (MONKZ5.ERECO)
- SCOTO TRANSITION (MONKZ5.SCOTO)

EC-3, 22 FEB 2024 to 21 MAR 2024

EC-3, 22 FEB 2024 to 21 MAR 2024

PAL-WAUKEE SIX DEPARTURE



DEPARTURE ROUTE DESCRIPTION

TAKEOFF RUNWAY 16: Start right turn within 1 NM of departure end of runway and complete turn to assigned heading north of R-058 of the Dupage (DPA) VOR/DME. If unable to comply, advise Executive Tower prior to take-off, thence

. . . . all aircraft will receive RADAR vectors to appropriate navaid/fix; maintain ATC assigned altitude. Expect clearance to requested altitude/flight level (three minutes for jet/turbo engines or five minutes for piston engines) after departure.