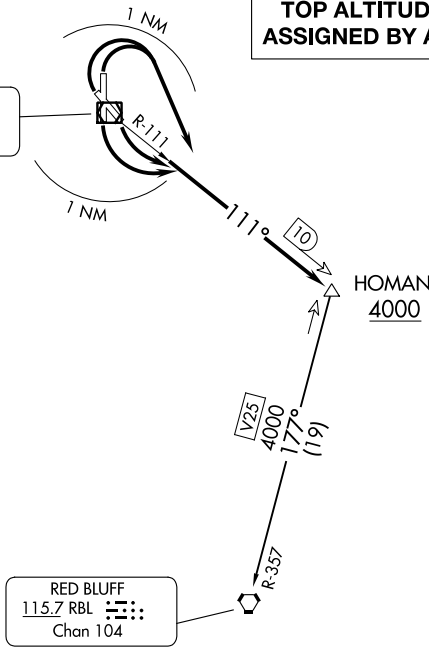


REDDING
114.35 RDD
Chan 90(Y)



**TOP ALTITUDE:
ASSIGNED BY ATC**

OAKLAND CENTER
132.2 350.3
ATIS
124.1
GND CON
121.7
REDDING TOWER ★
119.8 (CTAF) 269.25

SW-2, 22 FEB 2024 to 21 MAR 2024

SW-2, 22 FEB 2024 to 21 MAR 2024

TAKEOFF MINIMUMS:

Rwys 12, 16, 30, 34: Standard with minimum climb of 400' per NM to 4000.

NOTE: Chart not to scale.

DEPARTURE ROUTE DESCRIPTION

TAKEOFF RUNWAYS 12, 16: Climbing left turn within 1 NM, thence. . .

TAKEOFF RUNWAYS 30, 34: Climbing right turn within 1 NM, thence. . .

. . . Intercept the RDD R-111, to HOMAN INT/RDD 10 DME, cross HOMAN INT/RDD 10 DME at or above 4000'; then on (transition) or (assigned route). Expect filed altitude 10 minutes after departure.

RED BLUFF TRANSITION (HOMAN3.RBL): From over HOMAN INT/RDD 10 DME on RBL R-357 to RBL VORTAC.

(KENDL4.KENDL) 23334

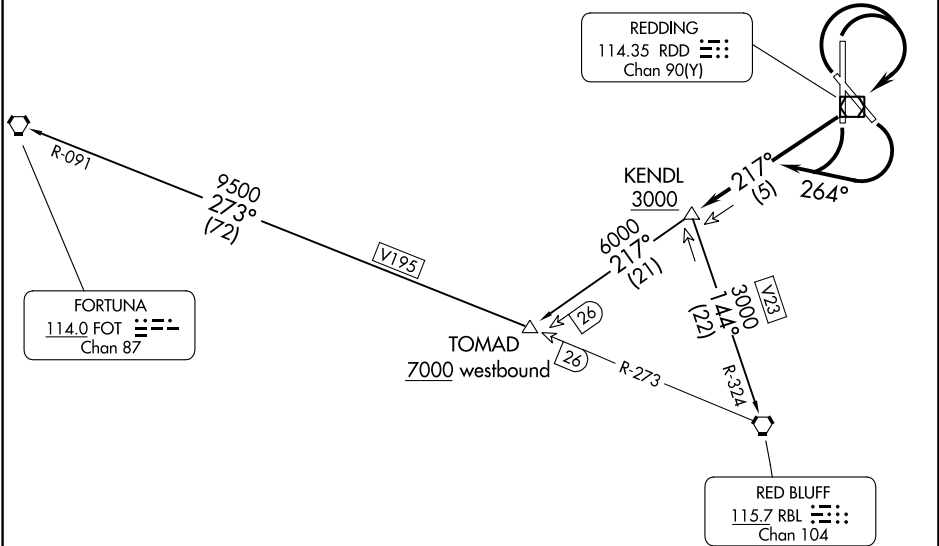
KENDL FOUR DEPARTURE

AL-688 (FAA)

REDDING RGNL (R.DD)
REDDING, CALIFORNIA

OAKLAND CENTER
132.2 350.3
ATIS
124.1
REDDING TOWER*
119.8 269.25

**TOP ALTITUDE:
ASSIGNED BY ATC**



SW-2, 22 FEB 2024 to 21 MAR 2024

SW-2, 22 FEB 2024 to 21 MAR 2024

TAKEOFF MINIMUMS

- Rwys 12: Standard with minimum climb of 410' per NM to 3000.
- Rwy 16: Standard with minimum climb of 495' per NM to 3000.
- Rwy 30: Standard with minimum climb of 440' per NM to 3000.
- Rwy 34: Standard with minimum climb of 410' per NM to 3000.

NOTE: Chart not to scale.

DEPARTURE ROUTE DESCRIPTION

TAKEOFF RUNWAYS 12 and 16: Climbing right turn heading 264° to intercept RDD VOR/DME R-217 to KENDL, cross KENDL at or above 3000, thence . . .

TAKEOFF RUNWAYS 30 and 34: Climbing right turn direct RDD VOR/DME then on RDD VOR/DME R-217 to KENDL, cross KENDL at or above 3000, thence . . .

. . . via (transition) or (assigned route) maintain ATC assigned altitude.

FORTUNA TRANSITION (KENDL4.FOT): From over KENDL on RDD R-217 to TOMAD, thence on RBL R-273 and FOT R-091 to FOT VORTAC.

RED BLUFF TRANSITION (KENDL4.RBL): From over KENDL on RBL R-324 to RBL VORTAC.

TOMAD TRANSITION (KENDL4.TOMAD): From over KENDL on RDD R-217 to TOMAD.

KENDL FOUR DEPARTURE

(KENDL4.KENDL) 30JAN20

REDDING, CALIFORNIA
REDDING RGNL (R.DD)

OAKLAND CENTER
132.2 350.3
ATIS
124.1
GND CON
121.7
REDDING TOWER ★
119.8 (CTAF) 269.25

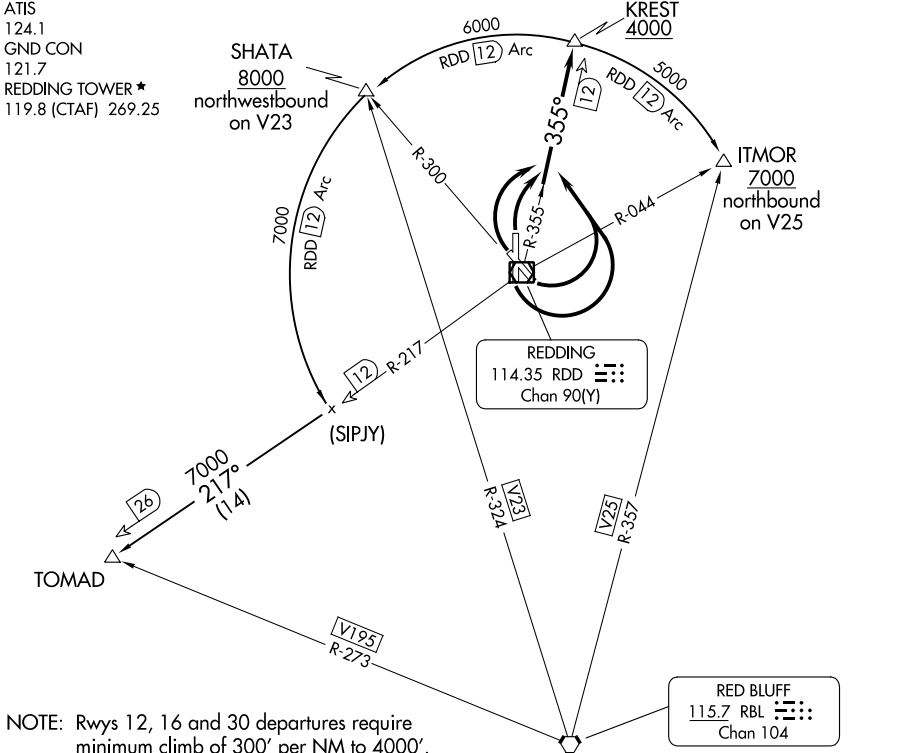
SHATA
8000
northwestbound
on V23

KREST
4000

ITMOR
7000
northbound
on V25

REDDING
114.35 RDD
Chan 90(Y)

RED BLUFF
115.7 RBL
Chan 104



- NOTE: Rwsys 12, 16 and 30 departures require minimum climb of 300' per NM to 4000'.
- NOTE: Rwy 34 departure requires minimum climb of 320' per NM to 4000'.
- NOTE: DME required.

NOTE: Chart not to scale.

SW-2, 22 FEB 2024 to 21 MAR 2024

SW-2, 22 FEB 2024 to 21 MAR 2024

DEPARTURE ROUTE DESCRIPTION

TAKEOFF RUNWAYS 12 and 16: Turn left immediately after departure to intercept and proceed on the RDD R-355 to KREST DME Fix. Cross KREST DME Fix at or above 4000, thence on (transition) or (assigned route).

TAKEOFF RUNWAYS 30 and 34: Turn right immediately after departure to intercept and proceed on RDD R-355 to KREST DME Fix. Cross KREST DME Fix at or above 4000, thence on (transition) or (assigned route).

ITMOR TRANSITION (KREST3.ITMOR): From over KREST DME Fix on RDD 12 DME Arc clockwise to ITMOR INT.

SHATA TRANSITION (KREST3.SHATA): From over KREST DME Fix on RDD 12 DME Arc counterclockwise to SHATA INT.

TOMAD TRANSITION (KREST3.TOMAD): From over KREST DME Fix on RDD 12 DME Arc counterclockwise to RDD R-217, thence on RDD R-217 to TOMAD INT.

SHASTA FOUR DEPARTURE

AL-688 (FAA)

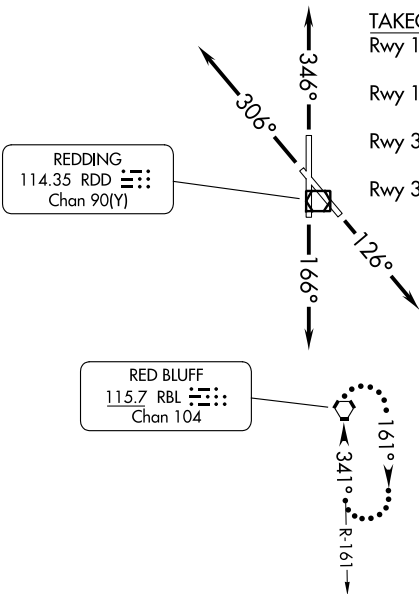
REDDING RGNL (R.DD)
REDDING, CALIFORNIA

OAKLAND CENTER
132.2 350.3
ATIS
124.1
GND CON
121.7
REDDING TOWER*
119.8 (CTAF) 269.25

**TOP ALTITUDE:
ASSIGNED BY ATC**

FORT JONES
116.25 FJS :---
Chan 109(Y)

KLAMATH FALLS
115.9 LMT :---
Chan 106



TAKEOFF MINIMUMS

- Rwy 12: Standard with a minimum climb of 375' per NM to 13900.
- Rwy 16: Standard with a minimum climb of 370' per NM to 13900.
- Rwy 30: Standard with a minimum climb of 460' per NM to 8400.
- Rwy 34: Standard with a minimum climb of 452' per NM to 8200.

DEPARTURE ROUTE DESCRIPTION

TAKEOFF RUNWAY 12: Climb heading 126° (or ATC assigned 344° CW 234°), thence . . .

TAKEOFF RUNWAY 16: Climb heading 166° (or ATC assigned 354° CW 234°), thence . . .

TAKEOFF RUNWAY 30: Climb heading 306° (or ATC assigned 134° CW 004°), thence . . .

TAKEOFF RUNWAY 34: Climb heading 346° (or ATC assigned 174° CW 004°), thence . . .

. . . expect vectors to join assigned route. Maintain ATC assigned altitude; expect filed altitude/flight level ten minutes after departing.

LOST COMMUNICATIONS: If no contact with Oakland Center after reaching 4000 proceed to RBL VORTAC and hold.

NOTE: RADAR required.

NOTE: Chart not to scale.

SHASTA FOUR DEPARTURE