

LOC I-RVL	APP CRS	Rwy Idg	5001
109.3	059°	TDZE	819
		Apt Elev	819

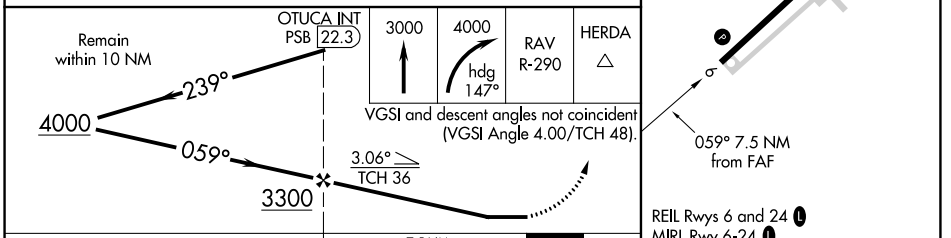
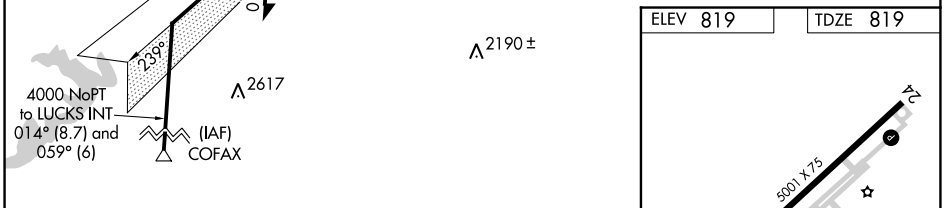
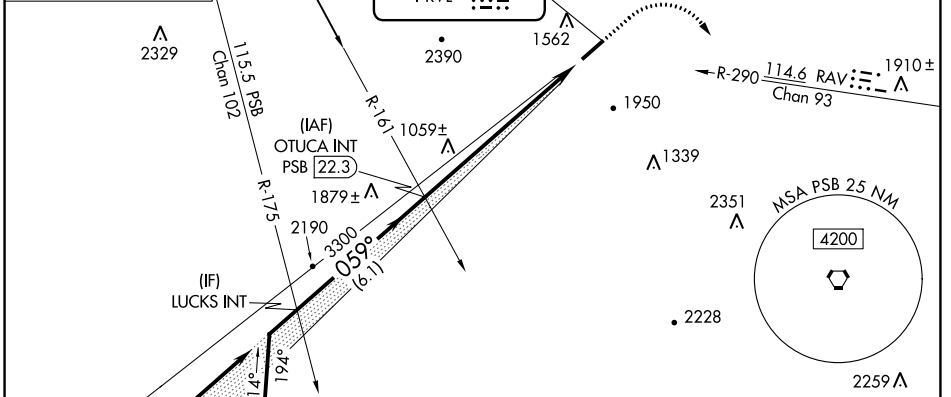
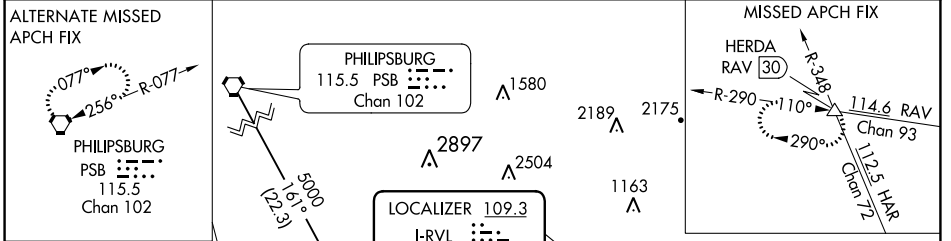
LOC RWY 6

MIFFLIN COUNTY (RVL)

NA Rwy 6 helicopter visibility reduction below 3/4 SM NA. VDP NA with State College altimeter setting. When local altimeter setting not received, use State College altimeter setting and increase all MDAs 100 feet.

MISSED APPROACH: Climb to 3000 then climbing right turn to 4000 on heading 147° and RAV VORTAC R-290 to HERDA INT/RAV 30 DME and hold.

AWOS-3PT 123.85	NEW YORK CENTER 134.8 338.3	UNICOM 122.7 (CTAF)
---------------------------	---------------------------------------	-------------------------------



CATEGORY	A	B	C	D	FAF to MAP 7.5 NM					
S-6	1840-1 1/4 1021 (1100-1 1/4)	1840-1 1/2 1021 (1100-1 1/2)	1840-3	1021 (1100-3)	Knots	60	90	120	150	180
					Min:Sec	7:30	5:00	3:45	3:00	2:30

NE-4, 02 DEC 2021 to 30 DEC 2021

NE-4, 02 DEC 2021 to 30 DEC 2021

WAAS CH 78107 W24A	APP CRS 239°	Rwy Idg TDZE Apt Elev	5001 818 819
--	------------------------	-----------------------------	---

RNAV (GPS) RWY 24

MIFFLIN COUNTY (R.V.L)

RNP APCH.

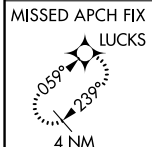
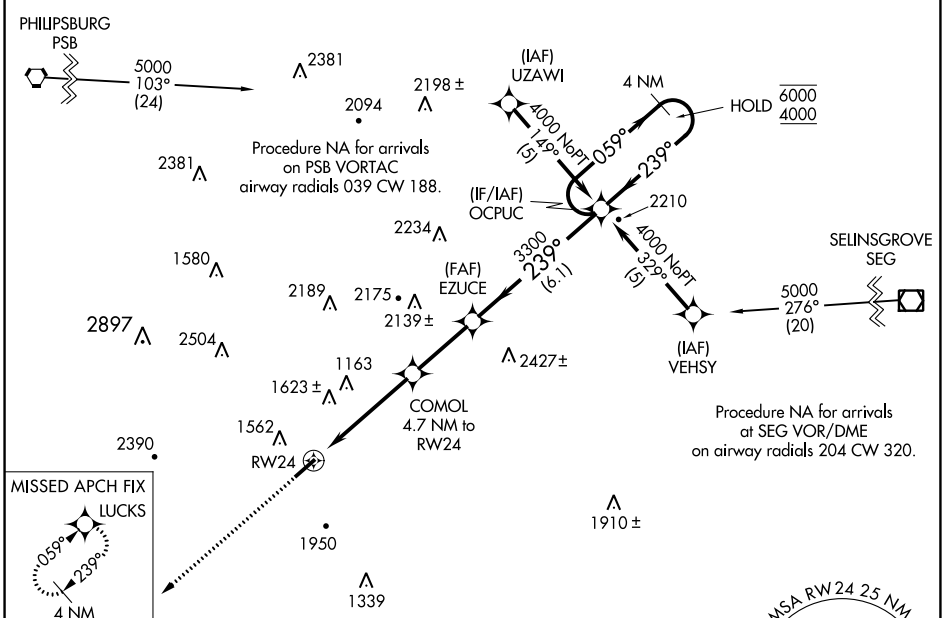
V VDP NA when using State College altimeter setting. Rwy 24 helicopter visibility reduction below 3/4 SM NA. When local altimeter setting not received, use State College altimeter setting and increase LPV DA to 1602 feet and all MDA's 100 feet; increase LPV visibility all Cats to 2 1/2 SM.

A

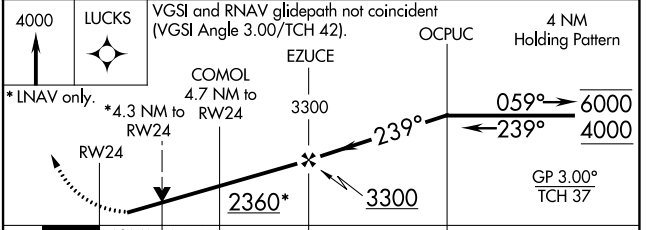
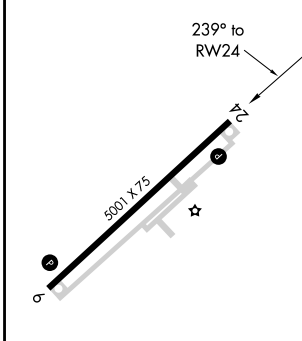
S -13°C

MISSED APPROACH:
Climb to 4000 direct
LUCKS and hold.

AWOS-3PT 123.85	NEW YORK CENTER 134.8 338.3	UNICOM 122.7 (CTAF) 0
---------------------------	---------------------------------------	---------------------------------



ELEV 819	TDZE 818
----------	----------



CATEGORY	A	B	C	D
LPV DA	1509-2 691 (700-2)			1509-2 1/4 691 (700-2 1/4)
LNAV MDA	2220-1 1/4 1402 (1500-1 1/4)	2220-1 1/2 1402 (1500-1 1/2)	2220-3 1402 (1500-3)	

REIL Rws 6 and 24 **0**
MIRL Rwy 6-24 **0**

NE-4, 02 DEC 2021 to 30 DEC 2021

NE-4, 02 DEC 2021 to 30 DEC 2021

APP CRS	Rwy Idg	5001
059°	TDZE	819
	Apt Elev	819

RNAV (GPS) RWY 6

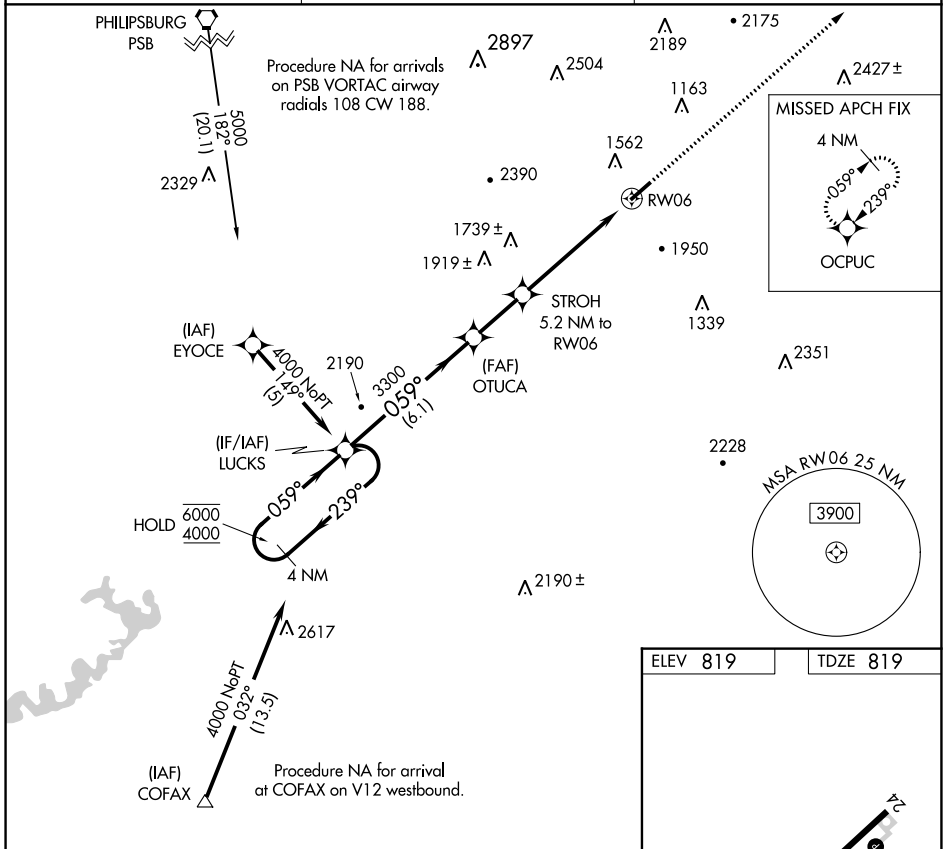
MIFFLIN COUNTY (RVL)

RNP APCH.

⚠ Rwy 6 helicopter visibility reduction below 3/4 SM NA. VDP NA when using State College altimeter setting. When local altimeter setting not received, use State College altimeter setting and increase all MDAs 100 feet.

MISSED APPROACH:
Climb to 4000 direct OCPUC and hold.

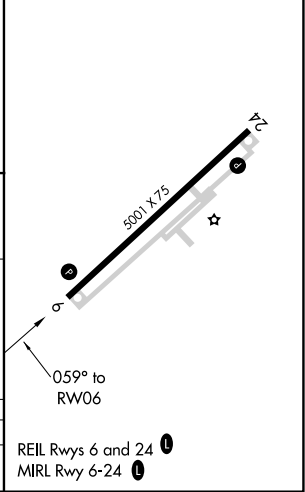
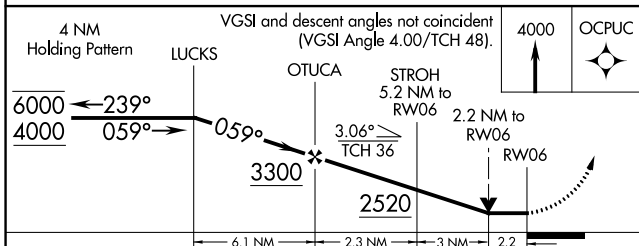
AWOS-3PT 123.85	NEW YORK CENTER 134.8 338.3	UNICOM 122.7 (CTAF) 0
---------------------------	---------------------------------------	---------------------------------



NE-4, 02 DEC 2021 to 30 DEC 2021

NE-4, 02 DEC 2021 to 30 DEC 2021

ELEV 819	TDZE 819
----------	----------



CATEGORY	A	B	C	D
LNNAV MDA	2180-1 1/4 1361 (1400-1 1/4)	2180-1 1/2 1361 (1400-1 1/2)	2180-3	1361 (1400-3)