

ALAMO THREE DEPARTURE

**TOP ALTITUDE:
5000**

D-ATIS
118.9
CLNC DEL
126.7
CPDLC
GND CON
121.9 348.6
SAN ANTONIO DEP CON
125.1 307.0 (Rwys 04/22/31)
127.1 269.1 (Rwy 13)
SAN ANTONIO TOWER
119.8 257.8

BROWNWOOD
113.55 BWD
Chan 82 (Y)

COWBOY
116.2 CVE
Chan 109

JUMBO
N31°32.17'
W98°10.81'
H-6

GOOCH SPRINGS
112.5 AGJ
Chan 72
N31°11.13'-W98°08.51'
L-19, H-6

STONEWALL
113.8 STV
Chan 85

CENTEX
112.8 CWK
Chan 75

HENLY
N30°06.48'
W98°23.60'
H-7

GOBBY
N30°04.97'
W98°22.28'
L-19

SAN ANTONIO
116.8 SAT
Chan 115
N29°38.64'
W98°27.68'

NOTE: RADAR required.

TAKEOFF MINIMUMS

Rwys 4, 13L, 13R, 22, 31L, 31R: Standard.

(NARRATIVE ON FOLLOWING PAGE)

NOTE: Chart not to scale.

ALAMO THREE DEPARTURE

SC-3, 22 FEB 2024 to 21 MAR 2024

SC-3, 22 FEB 2024 to 21 MAR 2024

ALAMO THREE DEPARTURE



DEPARTURE ROUTE DESCRIPTION

TAKEOFF RUNWAYS 4, 13L 13R, 22, 31L, 31R: Climb on assigned heading for RADAR vectors to SAT VORTAC. Maintain 5000, thence. . .

. . . on transition/route. Expect filed altitude 10 minutes after departure.

GOBBY TRANSITION (ALAMO3.GOBBY): From over SAT VORTAC on SAT R-002 to GOBBY.

GOOCH SPRINGS TRANSITION (ALAMO3.AGJ): From over SAT VORTAC on SAT R-002 to GOBBY, then on SAT R-002 and AGJ R-185 to AGJ VORTAC.

HENLY TRANSITION (ALAMO3.HENLY): From over SAT VORTAC on SAT R-359 to HENLY.

JUMBO TRANSITION (ALAMO3.JUMBO): From over SAT VORTAC on SAT R-359 to JUMBO.

SC-3, 22 FEB 2024 to 21 MAR 2024

SC-3, 22 FEB 2024 to 21 MAR 2024

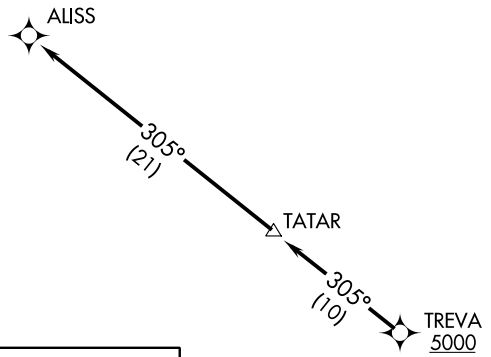
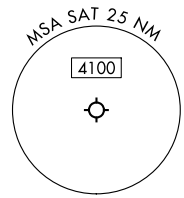
ALISS SIX DEPARTURE (RNAV)
(ALISS6,ALISS) 25JAN24

SAN ANTONIO, TEXAS
SAN ANTONIO INTL (SAT)

RNAV 1 - GPS.
RADAR required.

TOP ALTITUDE:
5000

SAN ANTONIO DEP CON
127.1 269.1 (Rwy 4)
125.7 290.225 (Rwys 13R, 22)
125.1 307.0 (Rwy 31L)
D-ATIS
118.9
CLNC DEL
126.7
CPDLC
GND CON
121.9 348.6
SAN ANTONIO TOWER
119.8 257.8



TAKEOFF MINIMUMS
Rwys 4, 13L/R, 22, 31L/R: Standard.

DEPARTURE ROUTE DESCRIPTION

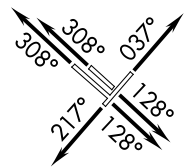
TAKEOFF RUNWAY 4: Climb on heading 037° or as assigned by ATC, for vectors to TREVA, thence . . .

TAKEOFF RUNWAYS 13L/R: Climb on heading 128° or as assigned by ATC, for vectors to TREVA, thence . . .

TAKEOFF RUNWAY 22: Climb on heading 217° or as assigned by ATC, for vectors to TREVA, thence . . .

TAKEOFF RUNWAYS 31L/R: Climb on heading 308° or as assigned by ATC, for vectors to TREVA, thence . . .

. . . on track 305° to TATAR, then on track 305° to ALISS. Maintain 5000.



NOTE: Chart not to scale.

(ALISS6,ALISS) 24025
ALISS SIX DEPARTURE (RNAV)

AL-369 (FAA)

SAN ANTONIO INTL (SAT)
SAN ANTONIO, TEXAS

BOWIE SEVEN DEPARTURE

**TOP ALTITUDE:
5000**

D-ATIS
118.9
CLNC DEL
126.7
CPDLC
GND CON
121.9 348.6
SAN ANTONIO DEP CON
125.7 290.225 (Rwys 13/22/31)
127.1 269.1 (Rwy 4 CORPUS CHRISTI TRANSITION)
125.1 307.0 (Rwy 4 LAREDO TRANSITION)
SAN ANTONIO TOWER
119.8 257.8

TAKEOFF MINIMUMS
Rwys 4, 13L, 13R, 22,
31L, 31R: Standard.

NOTE: RADAR Required.

SAN ANTONIO
116.8 SAT
Chan 115
N29°38.64'
W98°27.68'

YENNS
N29°04.08'
W98°19.32'

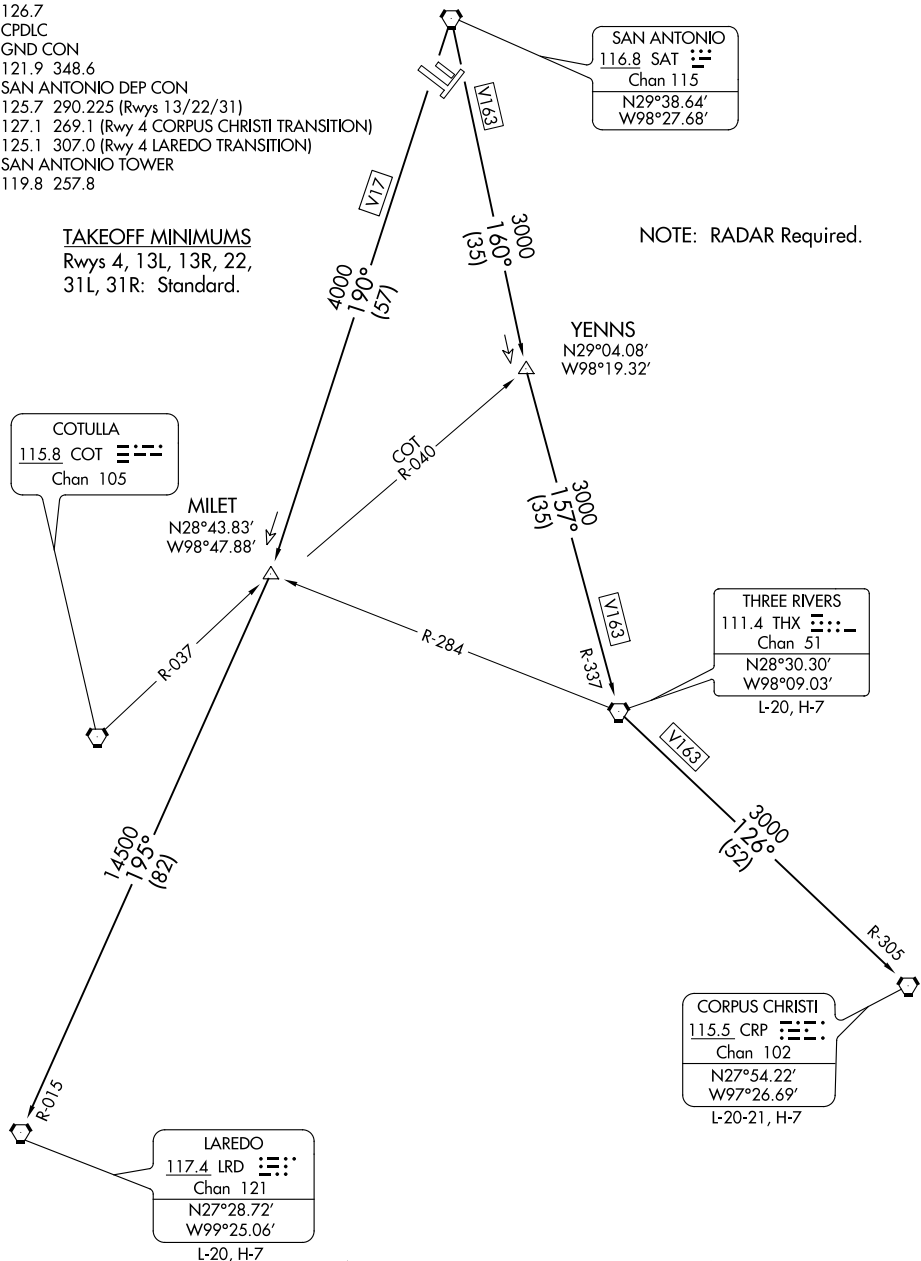
COTULLA
115.8 COT
Chan 105

MILET
N28°43.83'
W98°47.88'

THREE RIVERS
111.4 THX
Chan 51
N28°30.30'
W98°09.03'
L-20, H-7

CORPUS CHRISTI
115.5 CRP
Chan 102
N27°54.22'
W97°26.69'
L-20-21, H-7

LAREDO
117.4 LRD
Chan 121
N27°28.72'
W99°25.06'
L-20, H-7



(NARRATIVE ON FOLLOWING PAGE)

SC-3, 22 FEB 2024 to 21 MAR 2024

SC-3, 22 FEB 2024 to 21 MAR 2024

BOWIE SEVEN DEPARTURE

BOWIE SEVEN DEPARTURE



DEPARTURE ROUTE DESCRIPTION

TAKEOFF RWYS 4, 13L 13R, 22, 31L, 31R: Climb on assigned heading for RADAR vectors to SAT VORTAC. Maintain 5000, thence. . .

. . . on transition/route. Expect filed altitude 10 minutes after departure.

CORPUS CHRISTI TRANSITION (BOWIE7.CRP): From over SAT VORTAC on SAT R-160 to YENNS INT/SAT 35 DME, then on THX R-337 to THX VORTAC, then on THX R-126 and CRP R-305 to CRP VORTAC.

LAREDO TRANSITION (BOWIE7.LRD): From over SAT VORTAC on SAT R-190 to MILET INT/SAT 57 DME, then on LRD R-015 to LRD VORTAC.

SC-3, 22 FEB 2024 to 21 MAR 2024

SC-3, 22 FEB 2024 to 21 MAR 2024

LEJON FOUR DEPARTURE
(LEJON4.LEJON) 02MARI7

(LEJON4.LEJON) 18032
LEJON FOUR DEPARTURE

TOP ALTITUDE:
5000

D-ATIS
118.9
CLNC DEL
126.7
CPDLC
GND CON
121.9 348.6
SAN ANTONIO DEP CON
125.1 307.0 (Rwys 4/22/31)
125.7 290.225 (Rwy 13)
SAN ANTONIO TOWER
119.8 257.8

STONEWALL
113.8 STW
Chan 85

LEJON
N30°06.77'
W99°07.32'

CENTER POINT
117.5 CSI
Chan 122

TATAR
N29°53.23'
W98°48.15'

SAN ANTONIO
116.8 SAT
Chan 115
N29°38.64'
W98°27.68'
L-19, H-7

N

TAKEOFF MINIMUMS:
Rwys 4, 13L/R, 22, 31L/R: Standard.

NOTE: RADAR required.

DEPARTURE ROUTE DESCRIPTION

TAKEOFF RWYS 4, 13L/R, 22, 31L/R: Climb on assigned heading for RADAR vectors to SAT VORTAC, thence. . . .

. . . .on depicted route to LEJON INT, maintain 5000.
Expect filed altitude 10 minutes after departure.

NOTE: Chart not to scale.

SAN ANTONIO, TEXAS
SAN ANTONIO INTL (SAT)

SAN ANTONIO INTL (SAT)
SAN ANTONIO, TEXAS

A1-369 (FAA)

(SLENA1.SLENA) 24025

AL-369 (FAA)

SAN ANTONIO INTL (SAT)
SAN ANTONIO, TEXAS

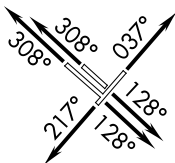
SLENA ONE DEPARTURE (RNAV)

SAN ANTONIO DEP CON
125.7 290.225 (Rwys 13R, 31L, 22)
127.1 269.1 (Rwy 4)
D-ATIS
118.9
CLNC DEL
126.7
CPDLC
GND CON
121.9 348.6
SAN ANTONIO TOWER
119.8 257.8

RNAV 1 - DME/DME IRU or GPS.

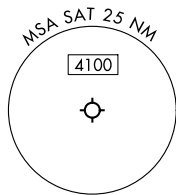
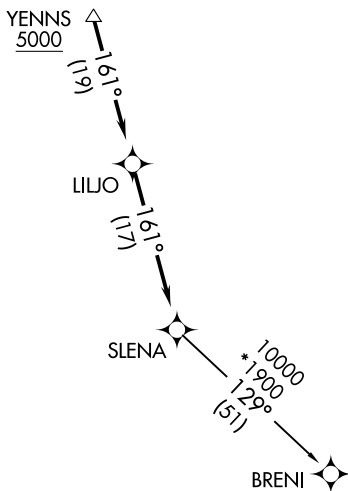
RADAR required.

TOP ALTITUDE:
5000



TAKEOFF MINIMUMS

Rwys 4, 13L/R, 22, 31L/R: Standard.



NOTE: Chart not to scale.

DEPARTURE ROUTE DESCRIPTION

TAKEOFF RUNWAY 4: Climb on heading 037° or as assigned by ATC, for vectors to YENNS, thence

TAKEOFF RUNWAYS 13L/R: Climb on heading 128° or as assigned by ATC, for vectors to YENNS, thence

TAKEOFF RUNWAY 22: Climb on heading 217° or as assigned by ATC, for vectors to YENNS, thence

TAKEOFF RUNWAYS 31L/R: Climb on heading 308° or as assigned by ATC, for vectors to YENNS, thence

. . . . on track 161° to LILJO, then on track 161° to SLENA, then on transition. Maintain 5000.

BRENI TRANSITION (SLENA1.BRENI)

SLENA ONE DEPARTURE (RNAV)
(SLENA1.SLENA) 25JAN24

SAN ANTONIO, TEXAS
SAN ANTONIO INTL (SAT)

SC-3, 22 FEB 2024 to 21 MAR 2024

SC-3, 22 FEB 2024 to 21 MAR 2024

SNDR ONE DEPARTURE (RNAV)
(SNDR1.SNDR) 25JAN24

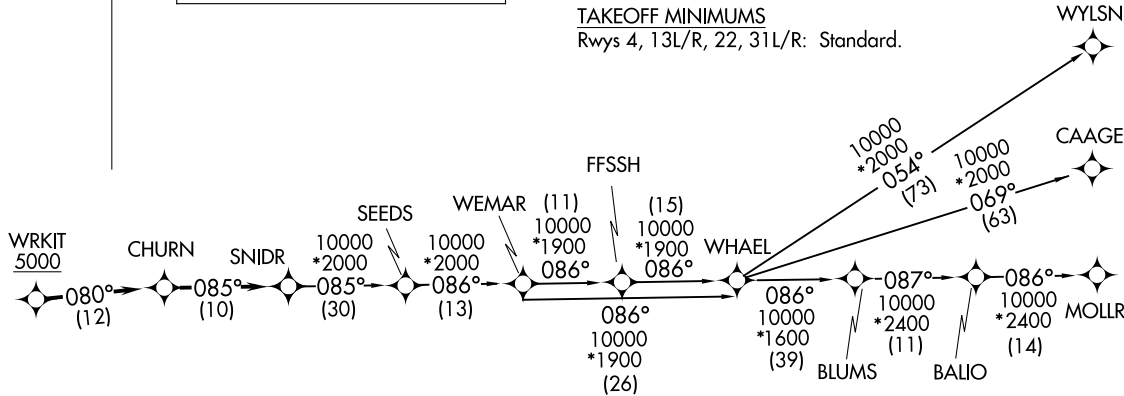
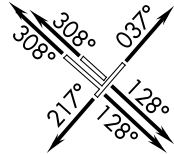
SAN ANTONIO DEP CON
125.7 290.225 (Rwy 22)
127.1 269.1 (Rwys 13R/31L, 4)
D-ATIS
118.9
CLNC DEL
126.7
CPDLC
GND CON
121.9 348.6
SAN ANTONIO TOWER
119.8 257.8



RNAV 1 - DME/DME IRU OR GPS.
RADAR required.

TOP ALTITUDE:
5000

TAKEOFF MINIMUMS
Rwys 4, 13L/R, 22, 31L/R: Standard.



DEPARTURE ROUTE DESCRIPTION

TAKEOFF RUNWAY 4: Climb on heading 037° or as assigned by ATC, for vectors to WRKIT, thence. . . .

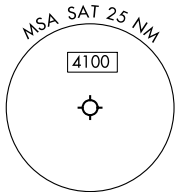
TAKEOFF RUNWAY 13L/R: Climb on heading 128° or as assigned by ATC, for vectors to WRKIT, thence. . . .

TAKEOFF RUNWAY 22: Climb on heading 217° or as assigned by ATC, for vectors to WRKIT, thence. . . .

TAKEOFF RUNWAY 31L/R: Climb on heading 308° or as assigned by ATC, for vectors to WRKIT, thence. . . .

. . . .on track 080° to CHURN, then on track 085° to SNDR, then on transition. Maintain 5000.

BLUMS TRANSITION (SNDR1.BLUMS)
CAAGE TRANSITION (SNDR1.CAAGE)
FFSSH TRANSITION (SNDR1.FFSSH)
MOLLR TRANSITION (SNDR1.MOLLR)
SEEDS TRANSITION (SNDR1.SEEDS)
WEMAR TRANSITION (SNDR1.WEMAR)
WHAEL TRANSITION (SNDR1.WHAEL)
WYLSN TRANSITION (SNDR1.WYLSN)



Note: Chart not to scale.

SAN ANTONIO INTL (SAT)
SAN ANTONIO, TEXAS

(SNDR1.SNDR) 24025
SNDR ONE DEPARTURE (RNAV)

AL-369 (FAA)
SAN ANTONIO INTL (SAT)
SAN ANTONIO, TEXAS

(TJANO1.TJANO) 24025

AL-369 (FAA)

SAN ANTONIO INTL (SAT)
SAN ANTONIO, TEXAS

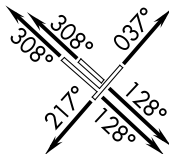
TJANO ONE DEPARTURE (RNAV)

SAN ANTONIO DEP CON
125.7 269.1 290.225 (Rwys 13R/31L, 22)
127.1 (Rwy 4)
D-ATIS
118.9
CLNC DEL
126.7
CPDLC
GND CON
121.9 348.6
SAN ANTONIO TOWER
119.8 257.8

RNAV 1 - DME/DME IRU or GPS.

RADAR required.

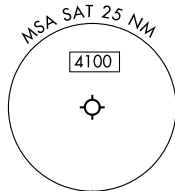
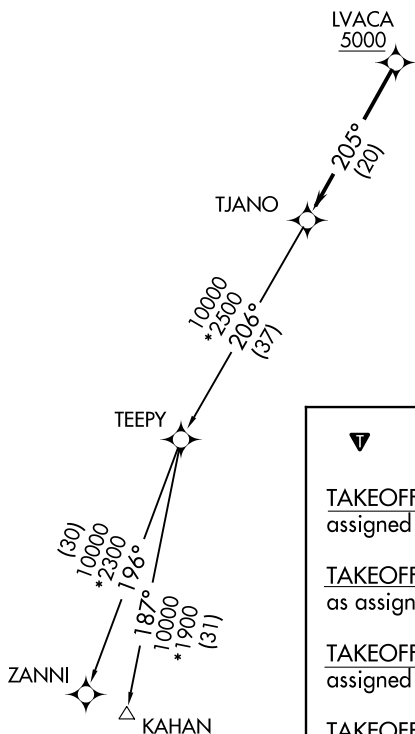
**TOP ALTITUDE:
5000**



TAKEOFF MINIMUMS

Rwys 4, 13L/R, 22, 31L/R: Standard.

NOTE: For non-GPS equipped aircraft,
THX and SAT DME must be operational.



DEPARTURE ROUTE DESCRIPTION

TAKEOFF RUNWAY 4: Climb on heading 037° or as assigned by ATC, for vectors to LVACA, thence. . .

TAKEOFF RUNWAY 13L/R: Climb on heading 128° or as assigned by ATC, for vectors to LVACA, thence. . .

TAKEOFF RUNWAY 22: Climb on heading 217° or as assigned by ATC, for vectors to LVACA, thence. . .

TAKEOFF RUNWAY 31L/R: Climb on heading 308° or as assigned by ATC, for vectors to LVACA, thence. . .

...on track 205° to TJANO, then on Transition. Maintain 5000.

KAHAN TRANSITION (TJANO1.KAHAN)
ZANNI TRANSITION (TJANO1.ZANNI)

Note: Chart not to scale.

SC-3, 22 FEB 2024 to 21 MAR 2024

SC-3, 22 FEB 2024 to 21 MAR 2024

TJANO ONE DEPARTURE (RNAV)
(TJANO1.TJANO) 25JAN24

SAN ANTONIO, TEXAS
SAN ANTONIO INTL (SAT)

(YODUH1.YODUH) 24025

AL-369 (FAA)

SAN ANTONIO INTL (SAT)

YODUH ONE DEPARTURE (RNAV)

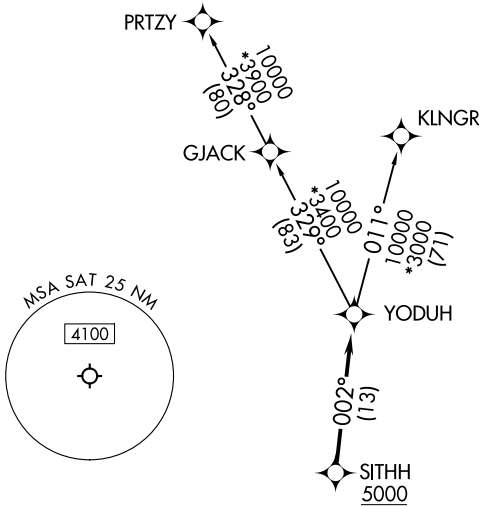
SAN ANTONIO, TEXAS

RNAV 1 - DME/DME IRU or GPS.

**TOP ALTITUDE:
5000**

RADAR required.

SAN ANTONIO DEP CON
 125.1 307.0 (Rwy 31L)
 125.7 290.225 (Rwy 22)
 127.1 269.1 (Rwys 13R, 4)
 D-ATIS
 118.9
 CLNC DEL
 126.7
 CPDLC
 GND CON
 121.9 348.6
 SAN ANTONIO TOWER
 119.8 257.8



TAKEOFF MINIMUMS

Rwys 4, 13L/R, 22, 31L/R: Standard.

NOTE: Aircraft destined for airports north/northeast of DFW terminal area must file the KLNGR Transition.

NOTE: Chart not to scale.



DEPARTURE ROUTE DESCRIPTION

TAKEOFF RUNWAY 4: Climb on heading 037° or as assigned by ATC, for vectors to SITHH, thence . . .

TAKEOFF RUNWAYS 13L/R: Climb on heading 128° or as assigned by ATC, for vectors to SITHH, thence . . .

TAKEOFF RUNWAY 22: Climb on heading 217° or as assigned by ATC, for vectors to SITHH, thence . . .

TAKEOFF RUNWAYS 31L/R: Climb on heading 308° or as assigned by ATC, for vectors to SITHH, thence . . .

. . . on track 002° to YODUH, then on Transition. Maintain 5000.

KLNGR TRANSITION (YODUH1.KLNGR)

PRTZY TRANSITION (YODUH1.PRTZY)

YODUH ONE DEPARTURE (RNAV)

(YODUH1.YODUH) 25JAN24

SAN ANTONIO, TEXAS
SAN ANTONIO INTL (SAT)

SC-3, 22 FEB 2024 to 21 MAR 2024

SC-3, 22 FEB 2024 to 21 MAR 2024