

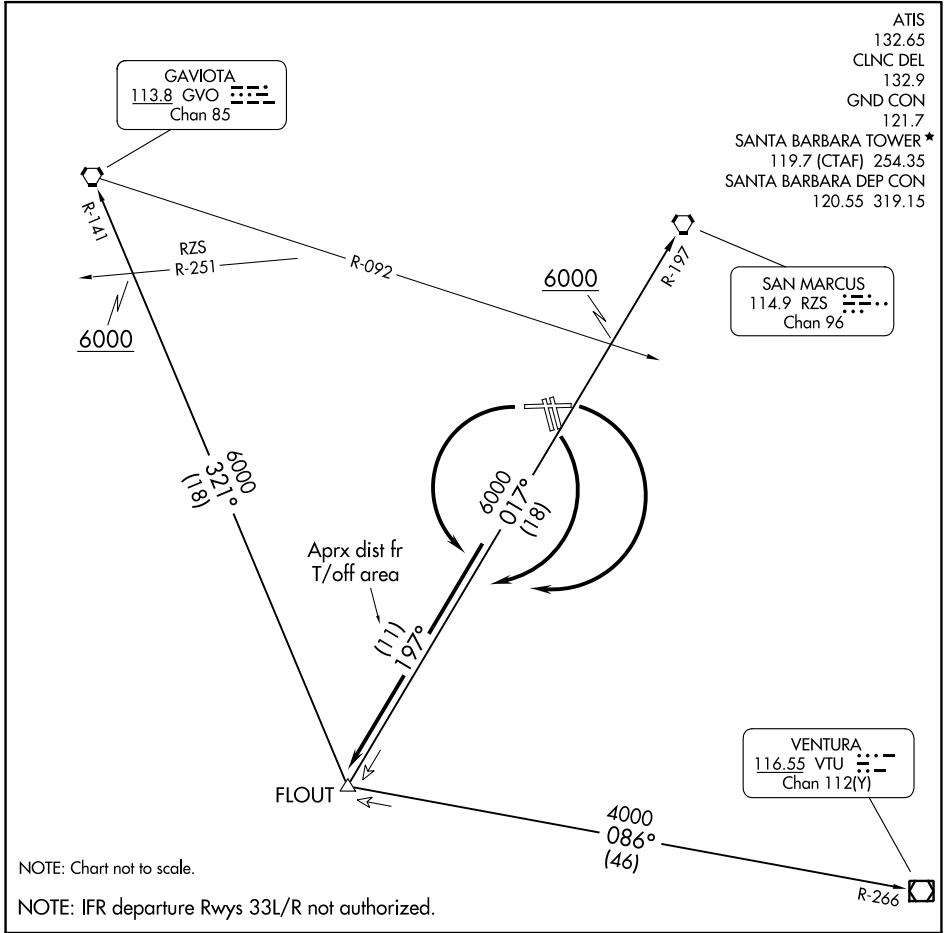
FLOUT FIVE DEPARTURE

AL-378 (FAA)

SANTA BARBARA MUNI (SBA)
SANTA BARBARA, CALIFORNIA

SW-3, 22 FEB 2024 to 21 MAR 2024

SW-3, 22 FEB 2024 to 21 MAR 2024



DEPARTURE ROUTE DESCRIPTION

TAKEOFF RUNWAYS 7 and 15L/R: Turn right, thence. . . .

TAKEOFF RUNWAY 25: Turn left, thence. . . .

. . . . intercept and proceed via RZS R-197 to FLOUT INT. Thence via (transition or assigned route.)

GAVIOTA TRANSITION (FLOUT5.GVO): From over FLOUT INT via GVO R-141 to GVO VORTAC. Cross RZS R-251 at or above 6000'.

SAN MARCUS TRANSITION (FLOUT5.RZS): From over FLOUT INT via RZS R-197 to RZS VORTAC. Cross GVO R-092 at or above 6000'.

VENTURA TRANSITION (FLOUT5.VTU): From over FLOUT INT via VTU R-266 to VTU VOR/DME.

GAUCH TWO DEPARTURE (RNAV)
(GAUCH2.GAUCH) 30JAN20

ATIS
132.65
CLNC DEL
132.9
GND CON
121.7
SANTA BARBARA TOWER*
119.7 254.35
SANTA BARBARA DEP CON
120.55 319.15

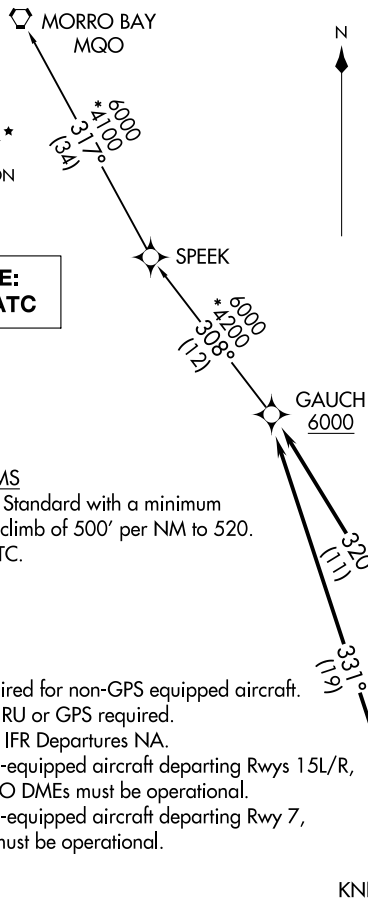
**TOP ALTITUDE:
ASSIGNED BY ATC**

TAKEOFF MINIMUMS

Rwys 7, 15L/R, 25: Standard with a minimum climb of 500' per NM to 520.
Rwys 33L/R: NA-ATC.

- NOTE: RNAV-1.
- NOTE: RADAR required for non-GPS equipped aircraft.
- NOTE: DME/DME/IRU or GPS required.
- NOTE: Rwy 33L/R - IFR Departures NA.
- NOTE: For non GPS-equipped aircraft departing Rwys 15L/R, RZS and GVO DMEs must be operational.
- NOTE: For non GPS-equipped aircraft departing Rwy 7, GVO DME must be operational.

SANTA BARBARA, CALIFORNIA
SANTA BARBARA MUNI (SBA)



DEPARTURE ROUTE DESCRIPTION

TAKEOFF RUNWAY 7: Climb on heading 075° to 520, then right turn direct OSHNH, then right turn direct CORRK, then on track 254° to KNNZI, then on track 331° to cross GAUCH at or above 6000, thence

TAKEOFF RUNWAYS 15L/R: Climb on heading 152° to 520, then right turn direct CORRK, then on track 254° to KNNZI, then on track 331° to cross GAUCH at or above 6000, thence

TAKEOFF RUNWAY 25: Climb on heading 255° to 520, then direct GRPES, then on track 255° to GRRRR, then on track 320° to cross GAUCH at or above 6000, thence

. . . .on (transition). Maintain ATC assigned altitude. Expect final altitude 10 minutes after departure.

MORRO BAY TRANSITION (GAUCH2.MQO)

(GAUCH2.GAUCH) 20030
GAUCH TWO DEPARTURE (RNAV)

A1-378 (FAA)

SANTA BARBARA MUNI (SBA)
SANTA BARBARA, CALIFORNIA

NOTE: Chart not to scale.

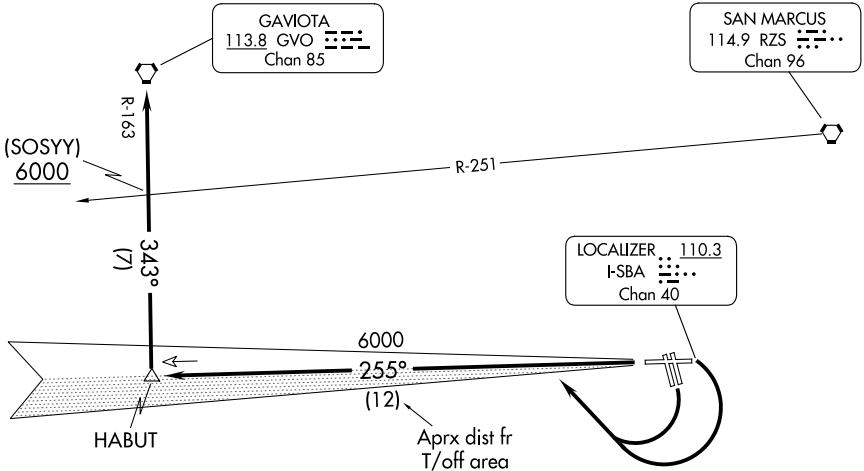
(HABUT4.GVO) 24025

HABUT FOUR DEPARTURE

AL-378 (FAA)

SANTA BARBARA MUNI (SBA)
SANTA BARBARA, CALIFORNIA

ATIS
132.65
CLNC DEL
132.9
GND CON
121.7
SANTA BARBARA TOWER *
119.7 (CTAF) 254.35
SANTA BARBARA DEP CON
120.55 319.15



NOTE: IFR departure Rwy 33L/R not authorized.

NOTE: Minimum (ATC) climb of 385' per NM to 6000.

NOTE: Chart not to scale.



DEPARTURE ROUTE DESCRIPTION

TAKEOFF RUNWAYS 7 and 15L/R: Turn right, intercept I-SBA west course to HABUT INT, thence via GVO R-163 to GVO VORTAC. Cross RZS R-251 at or above 6000'.

TAKEOFF RUNWAY 25: Intercept I-SBA west course to HABUT INT, thence via GVO R-163 to GVO VORTAC. Cross RZS R-251 at or above 6000'.

HABUT FOUR DEPARTURE
(HABUT4.GVO) 04SEP03

SANTA BARBARA, CALIFORNIA
SANTA BARBARA MUNI (SBA)

SW-3, 22 FEB 2024 to 21 MAR 2024

SW-3, 22 FEB 2024 to 21 MAR 2024

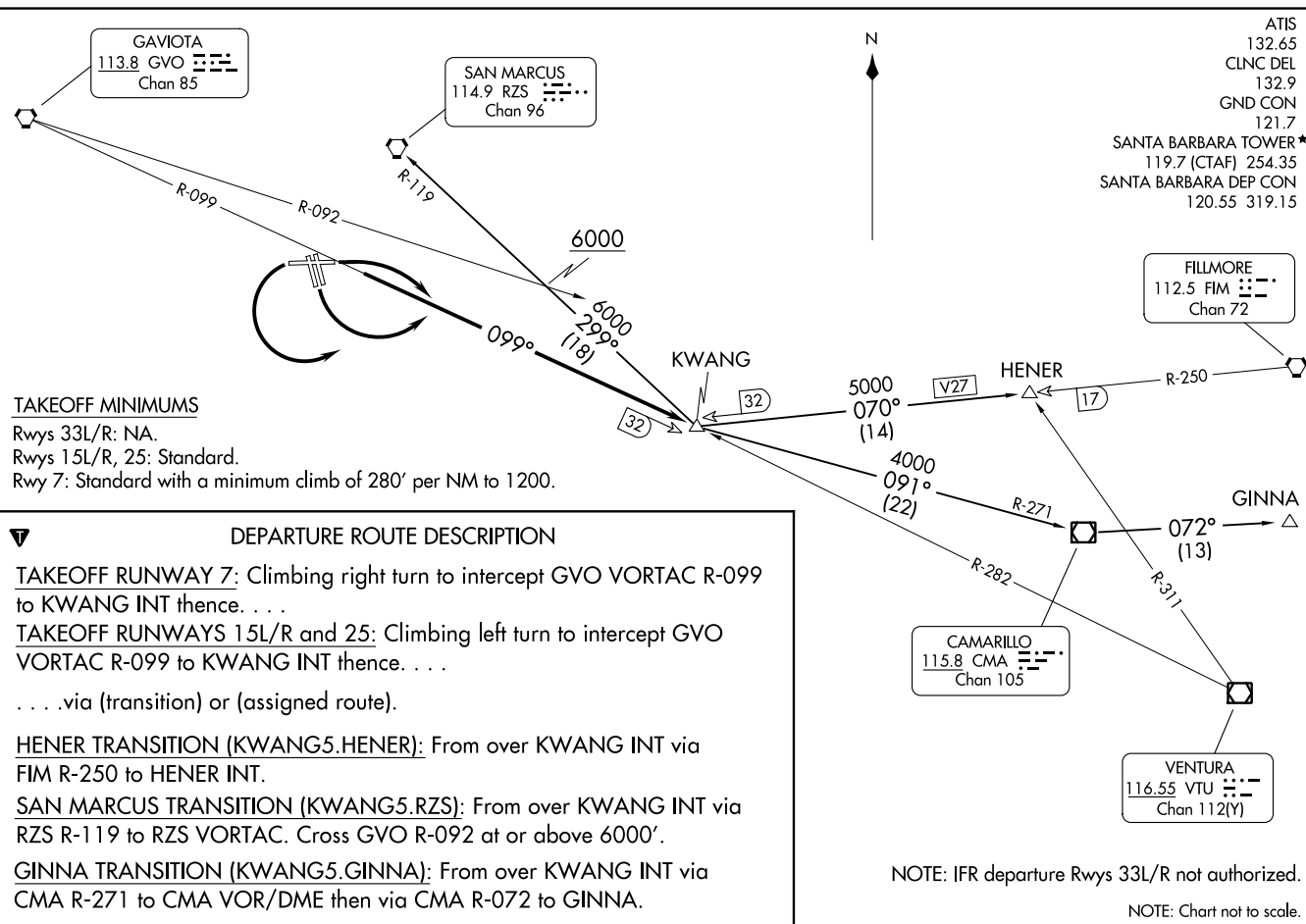
KWANG FIVE DEPARTURE
(KWANG5.KWANG) 220CT09

KWANG FIVE DEPARTURE
240Z25

AL-378 (FAA)

SANTA BARBARA MUNI (SBA)
SANTA BARBARA, CALIFORNIA

ATIS 132.65
CLNC DEL 132.9
GND CON 121.7
SANTA BARBARA TOWER ★ 119.7 (CTAF) 254.35
SANTA BARBARA DEP CON 120.55 319.15



TAKEOFF MINIMUMS

Rwys 33L/R: NA.
Rwys 15L/R, 25: Standard.
Rwy 7: Standard with a minimum climb of 280' per NM to 1200.

DEPARTURE ROUTE DESCRIPTION

TAKEOFF RUNWAY 7: Climbing right turn to intercept GVO VORTAC R-099 to KWANG INT thence. . . .

TAKEOFF RUNWAYS 15L/R and 25: Climbing left turn to intercept GVO VORTAC R-099 to KWANG INT thence. . . .

. . . .via (transition) or (assigned route).

HENER TRANSITION (KWANG5.HENER): From over KWANG INT via FIM R-250 to HENER INT.

SAN MARCUS TRANSITION (KWANG5.RZS): From over KWANG INT via RZS R-119 to RZS VORTAC. Cross GVO R-092 at or above 6000'.

GINNA TRANSITION (KWANG5.GINNA): From over KWANG INT via CMA R-271 to CMA VOR/DME then via CMA R-072 to GINNA.

NOTE: IFR departure Rws 33L/R not authorized.

NOTE: Chart not to scale.

SANTA BARBARA, CALIFORNIA
SANTA BARBARA MUNI (SBA)

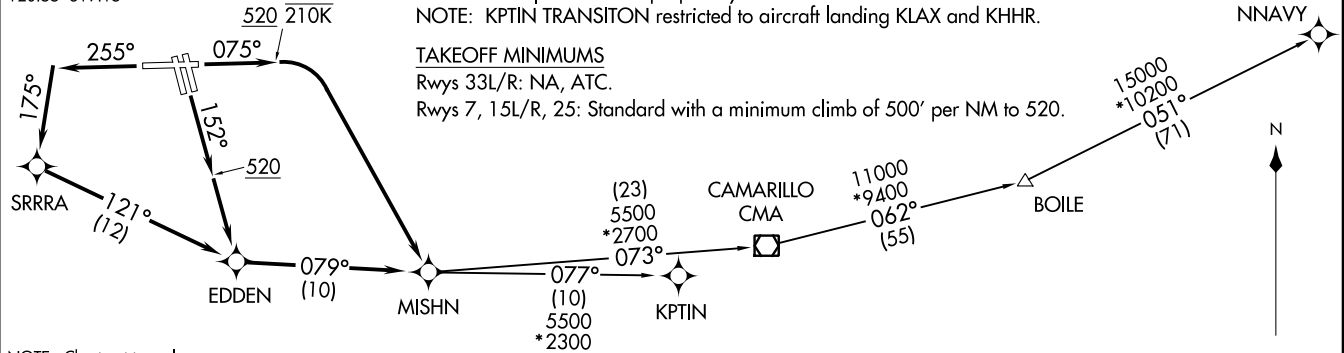
MISHN THREE DEPARTURE (RNAV)
(MISHN3.MISHN) 30JANZ0

ATIS
132.65
CLNC DEL
132.9
GND CON
121.7
SANTA BARBARA TOWER*
119.7 254.35
SANTA BARBARA DEP CON
120.55 319.15

**TOP ALTITUDE:
8000**

NOTE: Rwy 7: Do not exceed 210K until established direct MISHN.
NOTE: For non-GPS equipped aircraft on NNAVY TRANSITION,
TNP DME must be operational.
NOTE: RNAV-1.
NOTE: RADAR required for non-GPS equipped aircraft.
NOTE: DME/DME/IRU or GPS required.
NOTE: Turbojets and turboprops only.
NOTE: KPTIN TRANSITION restricted to aircraft landing KLAX and KHHR.

TAKEOFF MINIMUMS
Rwys 33L/R: NA, ATC.
Rwys 7, 15L/R, 25: Standard with a minimum climb of 500' per NM to 520.



NOTE: Chart not to scale.

DEPARTURE ROUTE DESCRIPTION

TAKEOFF RUNWAY 7: Climb on heading 075° to 520, then turn right direct MISHN, thence
TAKEOFF RUNWAYS 15L/R: Climb on heading 152° to 520, then direct EDDEN, then on track 079° to MISHN, thence
TAKEOFF RUNWAY 25: Climb on heading 255° to intercept course 175° to SRRRA, then on track 121° to EDDEN, then on track 079° to MISHN, thence
on (transition). Maintain 8000. Expect final altitude 10 minutes after departure.

- BOILE TRANSITION (MISHN3.BOILE)
- KPTIN TRANSITION (MISHN3.KPTIN)
- NNAVY TRANSITION (MISHN3.NNAVY)

SANTA BARBARA, CALIFORNIA
SANTA BARBARA MUNI (SBA)

(MISHN3.MISHN) 20030
MISHN THREE DEPARTURE (RNAV)

AL-378 (FAA)

SANTA BARBARA MUNI (SBA)
SANTA BARBARA, CALIFORNIA

ATIS 132.65
CLNC DEL 132.9
GND CON 121.7
SANTA BARBARA TOWER * 119.7 (CTAF) 254.35
SANTA BARBARA DEP CON 120.55 319.15

**TOP ALTITUDE:
3000**

SHAFTER
115.4 EHF
Chan 101

GORMAN
116.1 GMN
Chan 108

LAKE HUGHES
114.35 LHS
Chan 90 (Y)

PALMDALE
115.55 PMD
Chan 102(Y)

FILLMORE
112.5 FIM
Chan 72

VAN NUYS
113.1 VNY
Chan 78

CAMARILLO
115.8 CMA
Chan 105

SANTA CATALINA
114.15 SXC
Chan 88(Y)

VENTURA
116.55 VTU
Chan 112(Y)

AVENAL
117.1 AVE
Chan 118

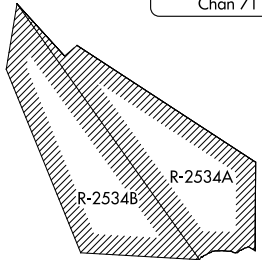
FELLOWS
117.5 FLW
Chan 122

SAN MARCUS
114.9 RZS
Chan 96

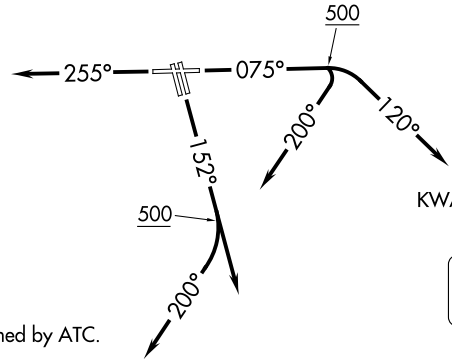
GAVIOTA
113.8 GVO
Chan 85

PASO ROBLES
114.3 PRB
Chan 90

MORRO BAY
112.4 MQO
Chan 71



HABUT



DEANO
KWANG
HENER

TAKEOFF MINIMUMS
Rwys 33L/R: NA-ATC.
Rwys 15L/R, 25: Standard.
Rwy 7: Standard with minimum climb of 260' per NM to 1100.

NOTE: This DP to be used only when assigned by ATC.
NOTE: RADAR required.

NOTE: Chart not to scale.

(CONTINUED ON FOLLOWING PAGE)



DEPARTURE ROUTE DESCRIPTION

SOUTH OR EAST ROUTE OF FLIGHT:

TAKEOFF RUNWAY 7: Climb heading 075° to 500, then climbing right turn on heading 120°. Thence. . . .

TAKEOFF RUNWAYS 15L/15R: Climb heading 152°. Thence. . . .

TAKEOFF RUNWAY 25: Climb heading 255°. Thence. . . .

. . . .On RADAR vectors, maintain 3000. Expect further clearance to filed altitude 5 minutes after departure.

NORTH OR WEST ROUTE OF FLIGHT:

TAKEOFF RUNWAY 7: Climb heading 075° to 500, then climbing right turn on heading 200°. Thence. . . .

TAKEOFF RUNWAYS 15L/R: Climb heading 152° to 500, then climbing right turn on heading 200°. Thence. . . .

TAKEOFF RUNWAY 25: Climb heading 255°. Thence. . . .

. . . .On RADAR vectors, maintain 3000. Expect further clearance to filed altitude 5 minutes after departure.

SW-3, 22 FEB 2024 to 21 MAR 2024

SW-3, 22 FEB 2024 to 21 MAR 2024