

ARLIN FOUR ARRIVAL  
(ARLIN,ARLIN4) 27 APR 17

ARRIVAL ROUTE DESCRIPTION

**BLYTHE TRANSITION (BLH.ARLIN4):** From over BLH VORTAC on BLH R-089 and IWA R-256 to ARLIN INT. Thence. . .

**MOHAK TRANSITION (MOHAK.ARLIN4):** From over MOHAK INT on GBN R-247 and BXK R-215 to HYDRR INT, then on IWA R-256 to ARLIN INT. Thence. . .

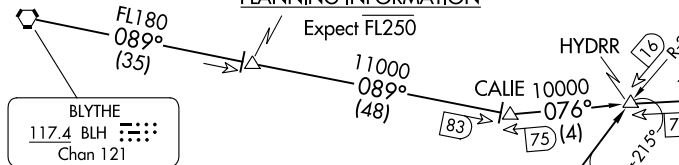
**PHOENIX SKY HARBOR INTL:** Rwy 7L/R or 8: From over ARLIN, Expect vectors to final approach course; Rwy 25L/R or 26: From over ARLIN, on IWA R-256 to TUKEE. Expect vectors to final approach course prior to TUKEE.

**SATELLITE AIRPORTS:** Expect vectors after passing SCOPE or JUDTH.

**LOST COMMUNICATIONS:** After ARLIN, on IWA R-256 and PXR R-143 to PXR VORTAC.

NOTE: BLYTHE Transition for turbojet aircraft FL240 and above.  
Turboprop aircraft plan BLYTHE ARRIVAL at or below FL230.  
NOTE: MOHAK Transition for turbojet and turboprop aircraft.  
NOTE: Turboprops landing KPHX expect vectors after passing SCOPE or JUDTH.

SCOPE  
VERTICAL NAVIGATION  
PLANNING INFORMATION

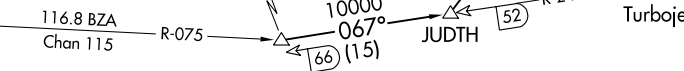


MOHAK  
VERTICAL NAVIGATION  
PLANNING INFORMATION

Turbojets expect FL250  
Turboprops expect 15000

VERTICAL NAVIGATION  
PLANNING INFORMATION

Landing WEST:  
Turbojets expect 14000  
Landing EAST:  
Turbojets expect 12000



PHOENIX-DEER VALLEY

SCOTTSDALE

PHOENIX  
115.6 PXR  
Chan 103

FALCON  
FLD

PHOENIX-SKY HARBOR INTL

STELLAR AIRPARK

PHOENIX-MESA GATEWAY

ALEYS

TUKEE

CHANDLER MUNI

WILLIE  
113.3 IWA  
Chan 80

GILA BEND  
116.6 GBN  
Chan 113

NOTE: RADAR required  
NOTE: DME required  
NOTE: Chart not to scale.

(ARLIN,ARLIN4) 23334  
ARLIN FOUR ARRIVAL

AL-322 (FAA)

PHOENIX, ARIZONA

PHOENIX, ARIZONA

**BLYTHE FIVE ARRIVAL**  
(BLH.BLH5) 27 APR 17

**ARRIVAL ROUTE DESCRIPTION**

**BLYTHE TRANSITION (BLH.BLH5):** From over BLH VORTAC on BLH R-082 to SALOM, then on GBN R-285 and IWA R-256 to ARLIN. Thence . . . .

**PHOENIX SKY HARBOR INTL:** Rwy 7L/R or 8: From over ARLIN, expect vectors to final approach course; Rwy 25L/R or 26: From over ARLIN, on IWA R-256 to TUKEE. Expect vectors to final approach course prior to TUKEE.

**SATELLITE AIRPORTS:** Expect vectors after passing SALOM.

**LOST COMMUNICATIONS:** After ARLIN, on IWA R-256 and PXR R-143 to PXR VORTAC.

PHOENIX APP CON 124.1 256.9  
PHOENIX TOWER 118.7 278.8 (Rwy 8-26)  
120.9 254.3 (Rwy 7L-25R, 7R-25L)  
PHOENIX GND CON 119.75 269.2  
CHD ATIS 128.325  
FFZ ATIS 118.25  
DVT ATIS 126.5  
IWA ATIS ★ 133.5 270.275  
PHX D-ATIS 127.575  
SDL ATIS ★ 118.6

**BLYTHE FIVE ARRIVAL**  
23334

AL-322 (FAI)

PHOENIX, ARIZONA



PHOENIX-DEER VALLEY

SCOTTSDALE

FALCON FLD

PHOENIX-MESA GATEWAY

WILLIE  
113.3 IWA  
Chan 80

PHOENIX  
115.6 PXR  
Chan 103

PHOENIX-SKY HARBOR INTL

STELLAR AIRPARK

TUKEE

CHANDLER MUNI

GILA BEND  
116.6 GBN  
Chan 113

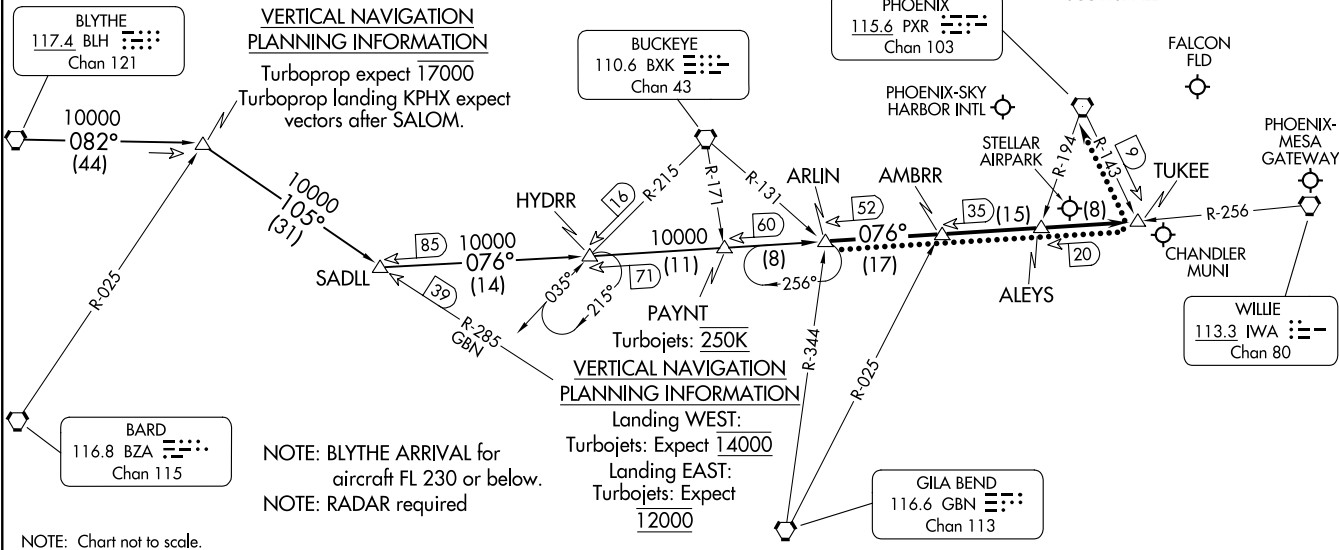
**SALOM VERTICAL NAVIGATION PLANNING INFORMATION**

Turboprop expect 17000  
Turboprop landing KPHX expect vectors after SALOM.

BUCKEYE  
110.6 BXX  
Chan 43

**PAYNT VERTICAL NAVIGATION PLANNING INFORMATION**

Landing WEST:  
Turbojets: Expect 14000  
Landing EAST:  
Turbojets: Expect 12000

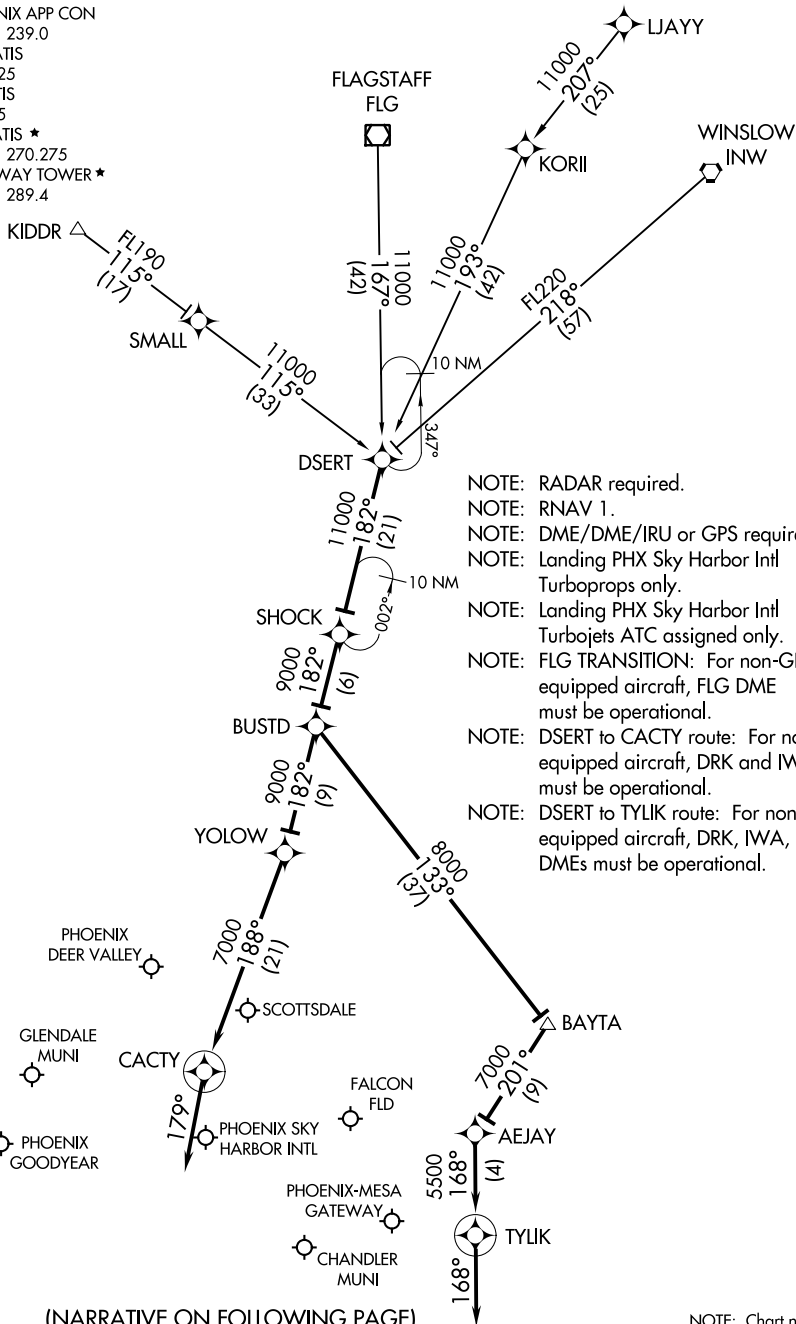


NOTE: BLYTHE ARRIVAL for aircraft FL 230 or below.  
NOTE: RADAR required

NOTE: Chart not to scale.

PHOENIX, ARIZONA

PHOENIX APP CON  
 120.7 239.0  
 CHD ATIS  
 128.325  
 FFZ ATIS  
 118.25  
 IWA ATIS \*  
 133.5 270.275  
 GATEWAY TOWER \*  
 120.6 289.4



- NOTE: RADAR required.
- NOTE: RNAV 1.
- NOTE: DME/DME/IRU or GPS required.
- NOTE: Landing PHX Sky Harbor Intl Turboprops only.
- NOTE: Landing PHX Sky Harbor Intl Turbojets ATC assigned only.
- NOTE: FLAG TRANSITION: For non-GPS equipped aircraft, FLAG DME must be operational.
- NOTE: DSERT to CACTY route: For non-GPS equipped aircraft, DRK and IWA DMEs must be operational.
- NOTE: DSERT to TYLIK route: For non-GPS equipped aircraft, DRK, IWA, and PXR DMEs must be operational.

(NARRATIVE ON FOLLOWING PAGE)

NOTE: Chart not to scale.

ARRIVAL ROUTE DESCRIPTION

FLAGSTAFF TRANSITION (FLG.DSERT2)

KIDDR TRANSITION (KIDDR.DSERT2)

LJAYY TRANSITION (LJAYY.DSERT2)

WINSLOW TRANSITION (INW.DSERT2)

From DSERT on track 182° to SHOCK, then on track 182° to BUSTD.

LANDING AT KDVT/KSDL/KGEU/KFFZ/KCHD/KGYR/KPHX:

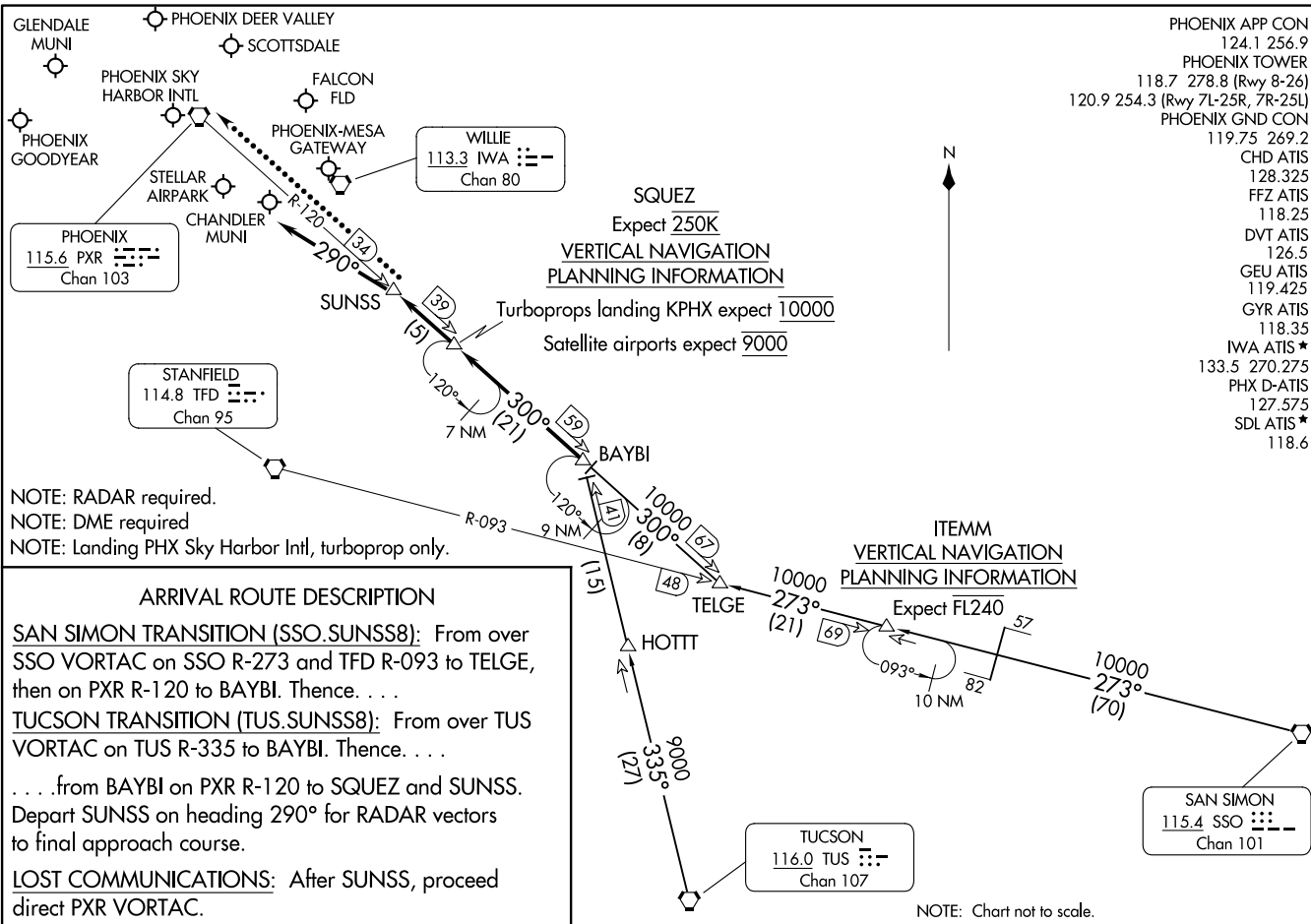
From BUSTD on track 182° to YOLOW, then on track 188° to CACTY then on track 179°. Expect RADAR vectors.

LANDING AT KIWA: From BUSTD on track 133° to BAYTA, then on track 201° to AEJAY, then on track 168° to TYLIK, then on track 168°. Expect RADAR vectors.

SW-4, 22 FEB 2024 to 21 MAR 2024

SW-4, 22 FEB 2024 to 21 MAR 2024

SUNSS EIGHT ARRIVAL  
 (BAYBI.SUNSS8) 27APR17



NOTE: RADAR required.  
 NOTE: DME required  
 NOTE: Landing PHX Sky Harbor Intl, turboprop only.

**ARRIVAL ROUTE DESCRIPTION**  
**SAN SIMON TRANSITION (SSO.SUNSS8):** From over SSO VORTAC on SSO R-273 and TFD R-093 to TELGE, then on PXR R-120 to BAYBI. Thence. . .  
**TUCSON TRANSITION (TUS.SUNSS8):** From over TUS VORTAC on TUS R-335 to BAYBI. Thence. . .  
 . . . from BAYBI on PXR R-120 to SQUEZ and SUNSS. Depart SUNSS on heading 290° for RADAR vectors to final approach course.  
**LOST COMMUNICATIONS:** After SUNSS, proceed direct PXR VORTAC.

- PHOENIX APP CON 124.1 256.9  
 PHOENIX TOWER 118.7 278.8 (Rwy 8-26)  
 120.9 254.3 (Rwy 7L-25R, 7R-25L)  
 PHOENIX GND CON 119.75 269.2  
 CHD ATIS 128.325  
 FFZ ATIS 118.25  
 DVT ATIS 126.5  
 GEU ATIS 119.425  
 GYR ATIS 118.35  
 IWA ATIS ★ 133.5 270.275  
 PHX D-ATIS 127.575  
 SDL ATIS ★ 118.6



NOTE: Chart not to scale.

(BAYBI.SUNSS8) 23334  
 SUNSS EIGHT ARRIVAL

AL-322 (FAA)

PHOENIX, ARIZONA

PHOENIX, ARIZONA