

APP CRS	Rwy Idg	<b>3800</b>
<b>180°</b>	TDZE	<b>437</b>
	Apt Elev	<b>437</b>

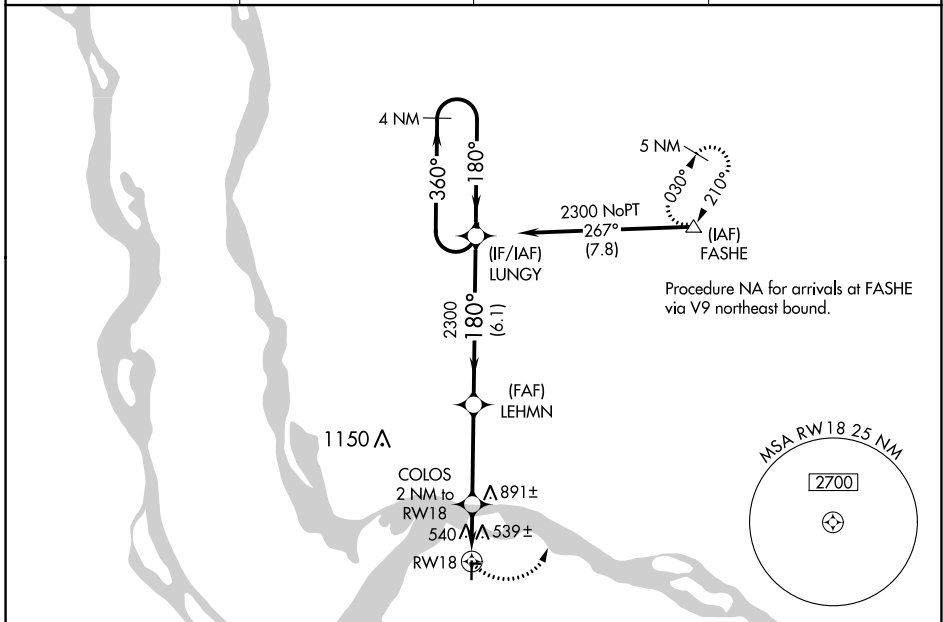
# RNAV (GPS) RWY 18

ST CHARLES COUNTY RGNL/SMARTT FLD (S/E/T)

**⚠** DME/DME RNP-0.3 NA. When local altimeter setting not received, use St Louis Lambert Intl altimeter setting and increase all MDAs 60 feet; increase visibility Cat C ¼ SM. VDP NA with St Louis Lambert Intl altimeter setting.

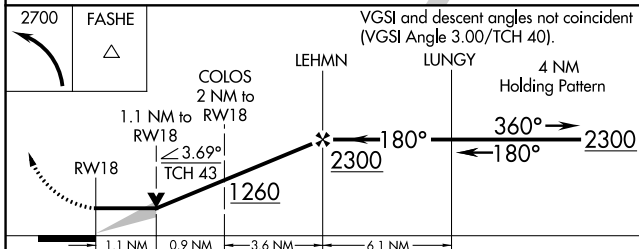
**⚠** MISSED APPROACH: Climbing left turn to 2700 direct FASHE and hold.

ASOS <b>118.075</b>	ST. LOUIS APP CON <b>124.2 353.9</b>	CLNC DEL <b>121.6</b>	UNICOM <b>122.7 (CTAF)</b> <b>📻</b>
------------------------	---	--------------------------	--

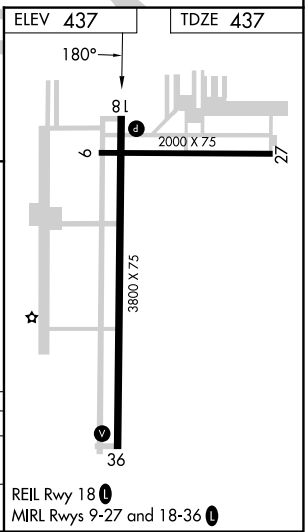


NC-3, 22 FEB 2024 to 21 MAR 2024

NC-3, 22 FEB 2024 to 21 MAR 2024



CATEGORY	A	B	C	D
LNVA MDA	840-1	403 (500-1)	840-1¼ 403 (500-1¼)	NA
CIRCLING	840-1 403 (500-1)	900-1 463 (500-1)	1220-2¼ 783 (800-2¼)	NA



VORTAC STL <b>117.4</b> Chan <b>121</b>	APP CRS <b>208°</b>	Rwy Idg <b>3800</b> TDZE <b>437</b> Apt Elev <b>437</b>
---	------------------------	---

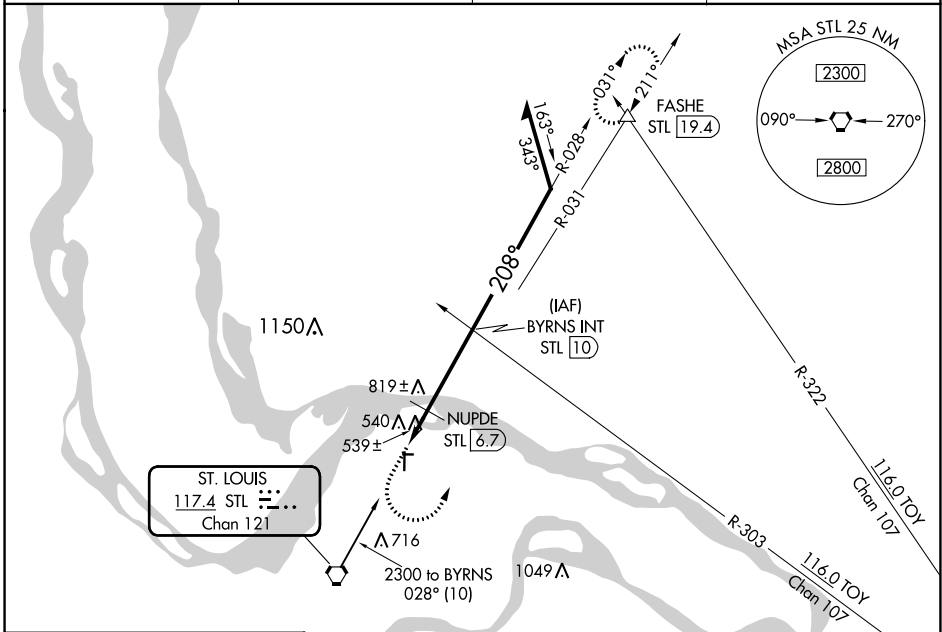
# VOR RWY 18

ST CHARLES COUNTY RGNL/SMARTT FLD (SE/T)

⚠ When local altimeter setting not received, use St Louis Lambert Intl altimeter setting and increase all MDAs 60 feet and Circling visibility Cat C ¼ SM. NUPDE fix minimums: increase Circling visibility Cat C ¼ SM. Straight-in minimums NA with St Louis Lambert Intl altimeter setting.

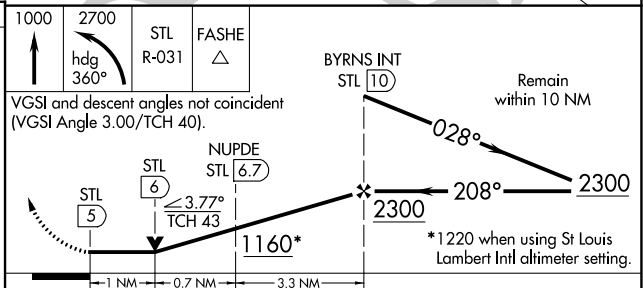
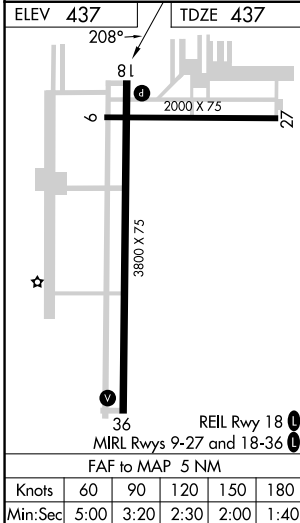
MISSED APPROACH: Climb to 1000 then climbing left turn to 2700 via heading 360° and STL R-031 to FASHE INT/19.4 DME and hold.

ASOS <b>118.075</b>	ST. LOUIS APP CON <b>124.2 353.9</b>	CLNC DEL <b>121.6</b>	UNICOM <b>122.7 (CTAF) 0</b>
------------------------	---	--------------------------	---------------------------------



NC-3, 22 FEB 2024 to 21 MAR 2024

NC-3, 22 FEB 2024 to 21 MAR 2024



CATEGORY	A	B	C	D
S-18	1160-1	723 (800-1)	1160-2 723 (800-2)	NA
CIRCLING	1160-1	723 (800-1)	1220-2¼ 783 (800-2¼)	NA
NUPDE FIX MINIMUMS				
S-18	800-1 363 (400-1)			NA
CIRCLING	840-1 403 (500-1)	900-1 463 (500-1)	1220-2¼ 783 (800-2¼)	NA

# VOR RWY 18