


LOC/DME I-FNU 110.15 Chan 38 (Y)	APP CRS 275°	Rwy Idg 11002 TDZE 45 Apt Elev 55
--	------------------------	--

ILS or LOC RWY 27R

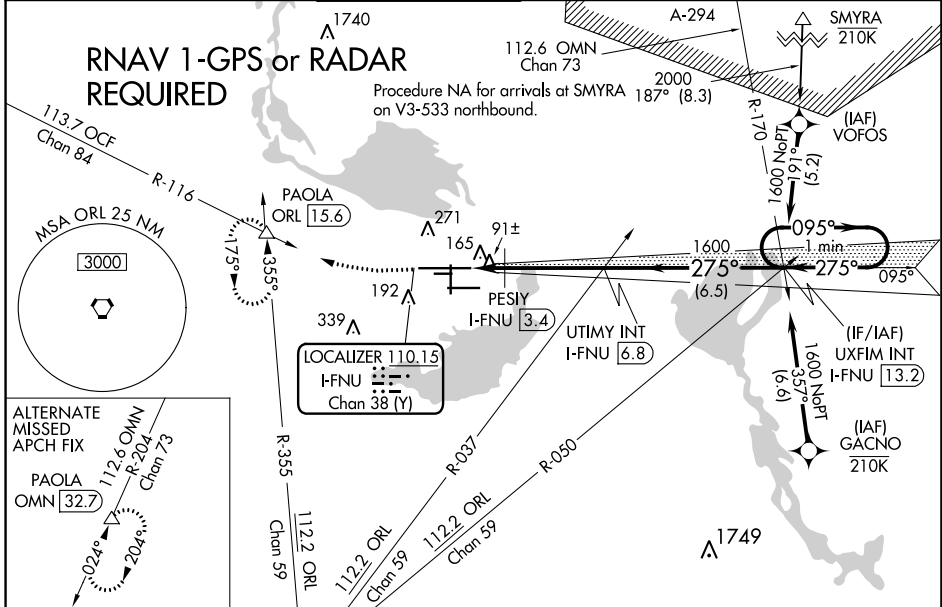
ORLANDO SANFORD INTL (SFB)

▼ For inop ALS, increase PESIY FIX minimums
▲ Cat C/D visibility to 1 SM.

MALSR 

MISSED APPROACH: Climb to 500 then climbing right turn to 2800 on heading 280° and ORL VORTAC R-355 to PAOLA INT/ORL 15.6 DME and hold, continue climb-in-hold to 2800.

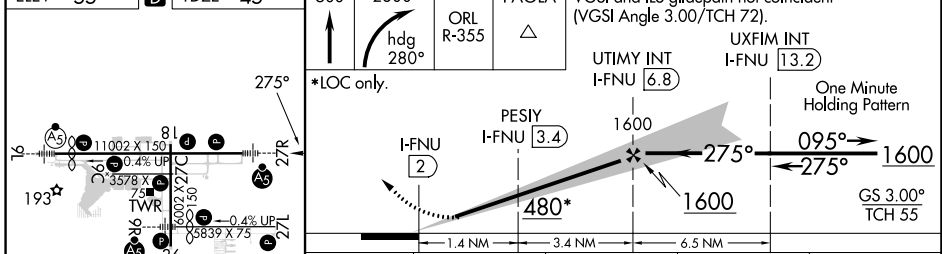
ATIS 125.975	ORLANDO APP CON 135.3 351.9 (NORTH) 119.775 351.9 (SOUTH)	SANFORD TOWER* 120.3 (CTAF) 0 254.35	GND CON 121.35 254.35	CLNC DEL 123.975	CLNC DEL 121.35 (when twr closed)
------------------------	---	---	---------------------------------	----------------------------	--






SE-3, 22 FEB 2024 to 21 MAR 2024

SE-3, 22 FEB 2024 to 21 MAR 2024

ELEV 55	D	TDZE 45	500	2800	PAOLA ORL R-355	VGSI and ILS glidepath not coincident (VGSI Angle 3.00/TCH 72).
---------	----------	---------	-----	------	-----------------	---



CATEGORY	A	B	C	D
S-ILS 27R	245-1/2 200 (200-1/2)			
S-LOC 27R	480-1/2	435 (500-1/2)	480-3/4	435 (500-3/4)
C CIRCLING	580-1	525 (600-1)	600-1/2 545 (600-1/2)	640-2 585 (600-2)
PESIY FIX MINIMUMS				
S-LOC 27R	400-1/2	355 (400-1/2)	400-5/8	355 (400-5/8)
C CIRCLING	580-1	525 (600-1)	600-1/2 545 (600-1/2)	640-2 585 (600-2)

MIRL Rwy 9C-27C and 18-36 
 HIRL Rwy 9L-27R and 9R-27L 
 REIL Rwy 9C, 18, 27L and 36 

FAF to MAP 4.8 NM

Knots	60	90	120	150	180
Min:Sec	4:48	3:12	2:24	1:55	1:36

LOC/DME I-SND 108.9 Chan 26	APP CRS 095°	Rwy ldg 10002 TDZE 55 Apt Elev 55
--	------------------------	--

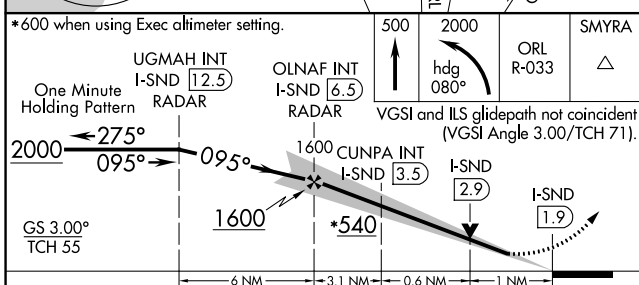
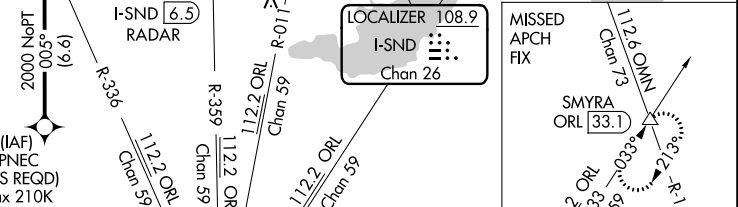
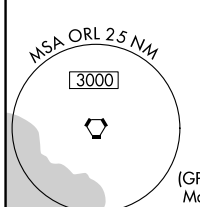
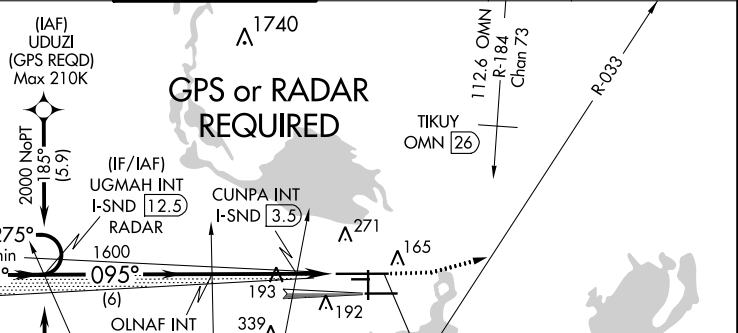
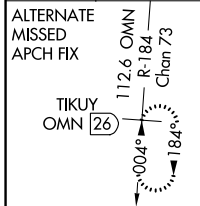
ILS or LOC RWY 9L

ORLANDO SANFORD INTL (SF'B)

V VDP NA with Exec altimeter setting. When local altimeter setting not received, use Exec altimeter setting: increase DA to 298 feet; increase all MDAs 60 feet and visibility Cats C and D ½ SM. Simultaneous approach authorized with Rwy 9R. Circling to Rwy 27C NA at night.

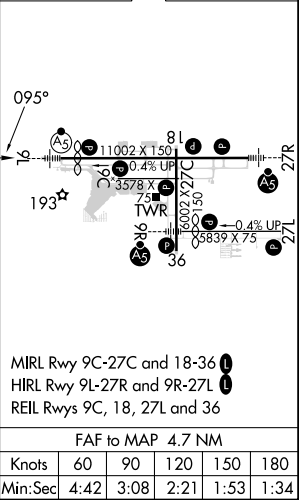
MALS MISSED APPROACH: Climb to 500 then climbing left turn to 2000 on heading 080° and ORL VORTAC R-033 to SMYRA INT/ORL 33.1 DME and hold.

ATIS 125.975	ORLANDO APP CON 135.3 351.9 (NORTH) 119.775 351.9 (SOUTH)	SANFORD TOWER* 120.3 (CTAF) 0 254.35	GND CON 121.35 254.35	CLNC DEL 123.975	CLNC DEL 121.35 (when twr closed)
------------------------	---	---	---------------------------------	----------------------------	--



ELEV 55	TDZE 55
---------	---------

CATEGORY	A	B	C	D
S-ILS 9L	255-½ 200 (200-½)			
S-LOC 9L	540-½	485 (500-½)	540-1	485 (500-1)
C CIRCLING	580-1	525 (600-1)	600-1½ 545 (600-1½)	640-2 585 (600-2)
CUNPA FIX MINIMUMS (DUAL VOR RECEIVER OR DME REQUIRED)				
S-LOC 9L	460-½	405 (500-½)	460-¾	405 (500-¾)
C CIRCLING	580-1	525 (600-1)	600-1½ 545 (600-1½)	640-2 585 (600-2)



SE-3, 22 FEB 2024 to 21 MAR 2024

SE-3, 22 FEB 2024 to 21 MAR 2024

MIRL Rwy 9C-27C and 18-36 **!**
HIRL Rwy 9L-27R and 9R-27L **!**
REIL Rwys 9C, 18, 27L and 36

FAF to MAP 4.7 NM

Knots	60	90	120	150	180
Min:Sec	4:42	3:08	2:21	1:53	1:34

LOC/DME I-OOS 111.55 Chan 52 (Y)	APP CRS 095°	Rwy Idg TDZE Apt Elev	5000 39 55
--	------------------------	-----------------------------	---------------------------------------

ILS or LOC RWY 9R

ORLANDO SANFORD INTL (SF'B)

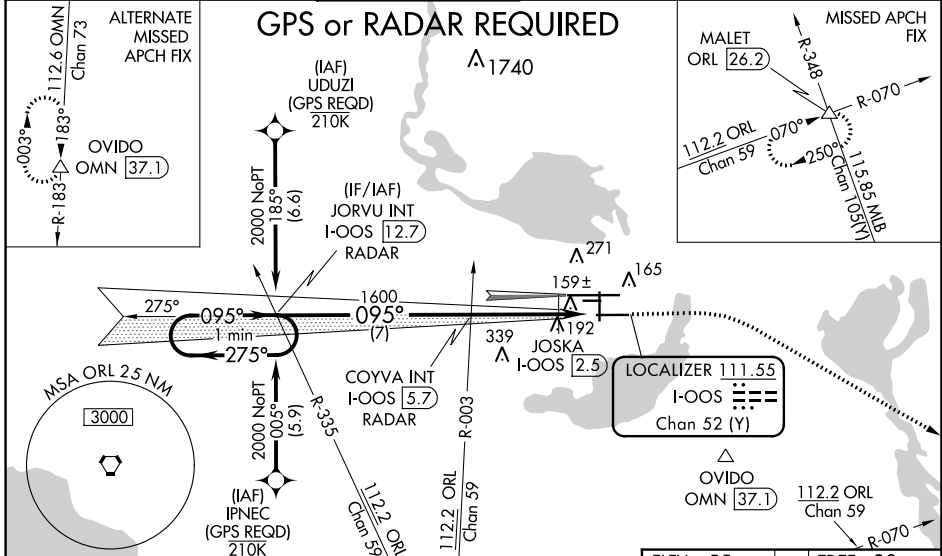
⚠ When local altimeter setting not received, use Exec altimeter setting and increase S-ILS DA to 282, and all MDA 60 feet; increase S-LOC 9R Cat C, D visibility ¼ mile, Circling Cat C visibility ⅓ mile and JOSKA Fix Minimums S-LOC 9R Cats C, D visibility ¼ mile. Simultaneous approach authorized with Rwy 9L. Night landing: Rwy 27C NA.

MALSR



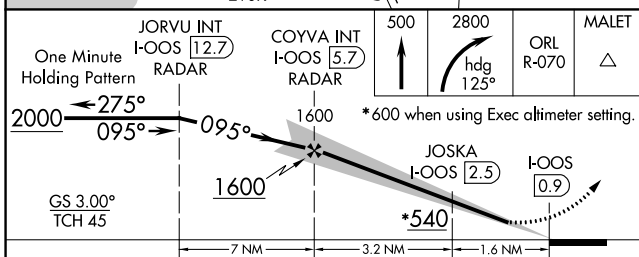
MISSED APPROACH: Climb to 500 then climbing right turn to 2800 on heading 125° and ORL VORTAC R-070 to MALET INTL/ORL 26.2 DME and hold.

ATIS 125.975	ORLANDO APP CON 135.3 351.9 (NORTH) 119.775 351.9 (SOUTH)	SANFORD TOWER* 120.3 (CTAF) 0 254.35	GND CON 121.35 254.35	CLNC DEL 123.975	CLNC DEL 121.35 (When twr closed)
------------------------	---	---	---------------------------------	----------------------------	--



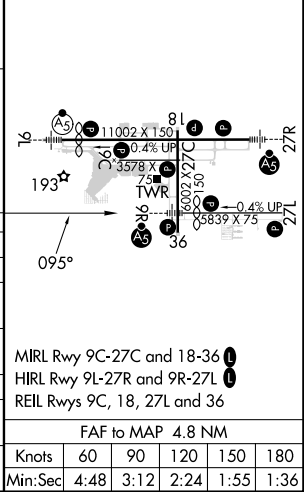
SE-3, 22 FEB 2024 to 21 MAR 2024

SE-3, 22 FEB 2024 to 21 MAR 2024



ELEV 55	D TDZE 39
---------	------------------

CATEGORY	A	B	C	D
S-ILS 9R		239-½	200 (200-½)	
S-LOC 9R	540-½	501 (500-½)	540-1	501 (500-1)
C CIRCLING	580-1	525 (600-1)	600-1½ 545 (600-1½)	640-2 585 (600-2)
JOSKA FIX MINIMUMS (DME REQUIRED)				
S-LOC 9R	440-½	401 (400-½)	440-¾	401 (400-¾)
C CIRCLING	580-1	525 (600-1)	600-1½ 545 (600-1½)	640-2 585 (600-2)



Knots	60	90	120	150	180
Min:Sec	4:48	3:12	2:24	1:55	1:36

WAAS CH 45923 W18A	APP CRS 185°	Rwy Idg 5956 TDZE 49 Apt Elev 55
--	------------------------	---

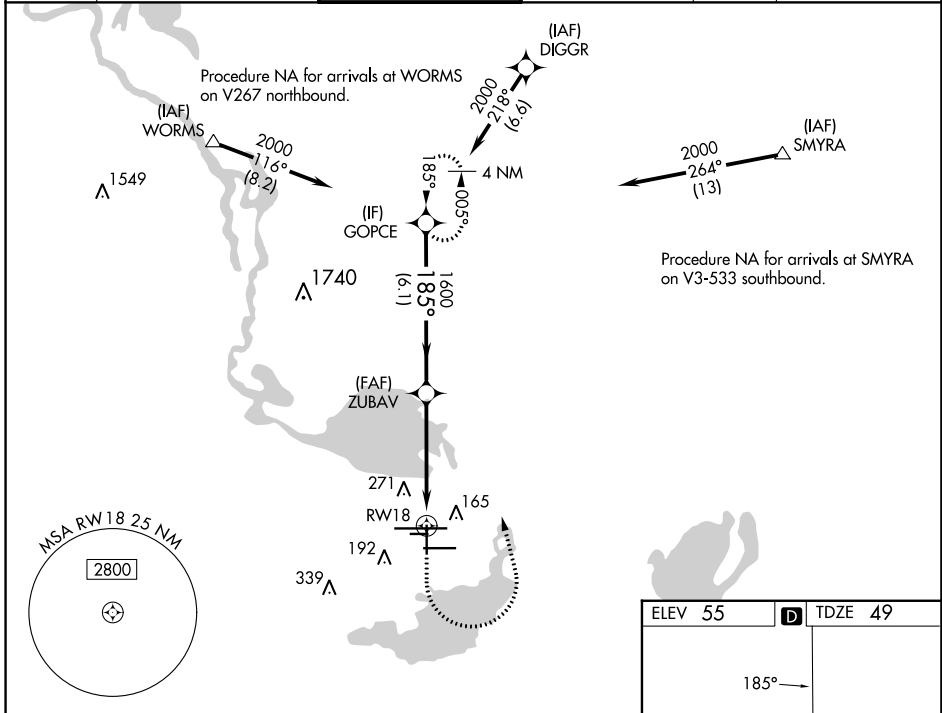
RNAV (GPS) RWY 18

ORLANDO SANFORD INTL (SF'B)

⚠ Night Landing: Rwy 27C NA. Baro-VNAV NA when using Exec altimeter setting. For unconsensed Baro-VNAV systems, LNAV/VNAV NA below -1.5°C (5°F) or above 43°C (109°F). DME/DME RNP-0.3 NA. VDP NA with Exec altimeter setting. When local altimeter setting not received, use Exec altimeter setting; increase LPV DA to 292 feet; increase LNAV/VNAV DA to 342 feet and all visibilities ¼ SM; increase all MDAs 60 feet and visibility Cats C and D ½ SM.

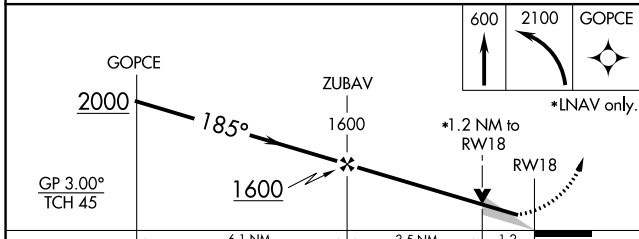
⚠ MISSED APPROACH: Climb to 600 then climbing left turn to 2100 direct GOPCE and hold.

ATIS 125.975	ORLANDO APP CON 135.3 351.9 (NORTH) 119.775 351.9 (SOUTH)	SANFORD TOWER* 120.3 (CTAF) 0 254.35	GND CON 121.35 254.35	CLNC DEL 123.975	CLNC DEL 121.35 (when twr closed)
------------------------	---	---	---------------------------------	----------------------------	--



SE-3, 22 FEB 2024 to 21 MAR 2024

SE-3, 22 FEB 2024 to 21 MAR 2024



ELEV 55	D	TDZE 49
---------	---	---------

MIRA Rwy 9C-27C and 18-36 **Ⓛ**
 HIRL Rwy 9L-27R and 9R-27L **Ⓛ**
 REIL Rwy 9C, 18, 27L and 36

CATEGORY	A	B	C	D
LPV DA		249-¾	200 (200-¾)	
LNAV/VNAV DA		299-¾	250 (300-¾)	
LNAV MDA	480-1	431 (500-1)	480-1¼	431 (500-1¼)
CIRCLING	580-1	525 (600-1)	600-1½	640-2
			545 (600-1½)	585 (600-2)

APP CRS	Rwy Idg	5839
275°	TDZE	28
	Apt Elev	55

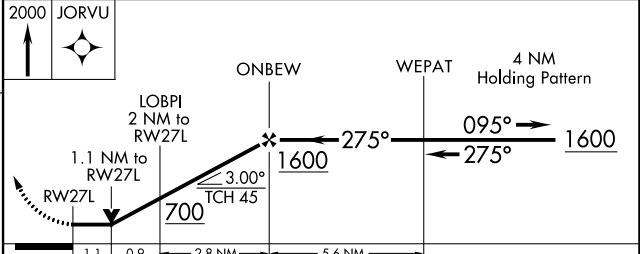
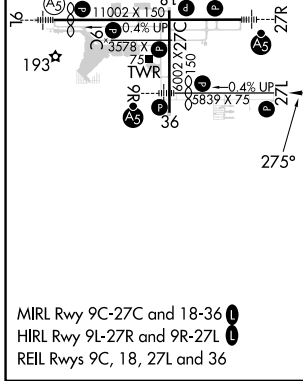
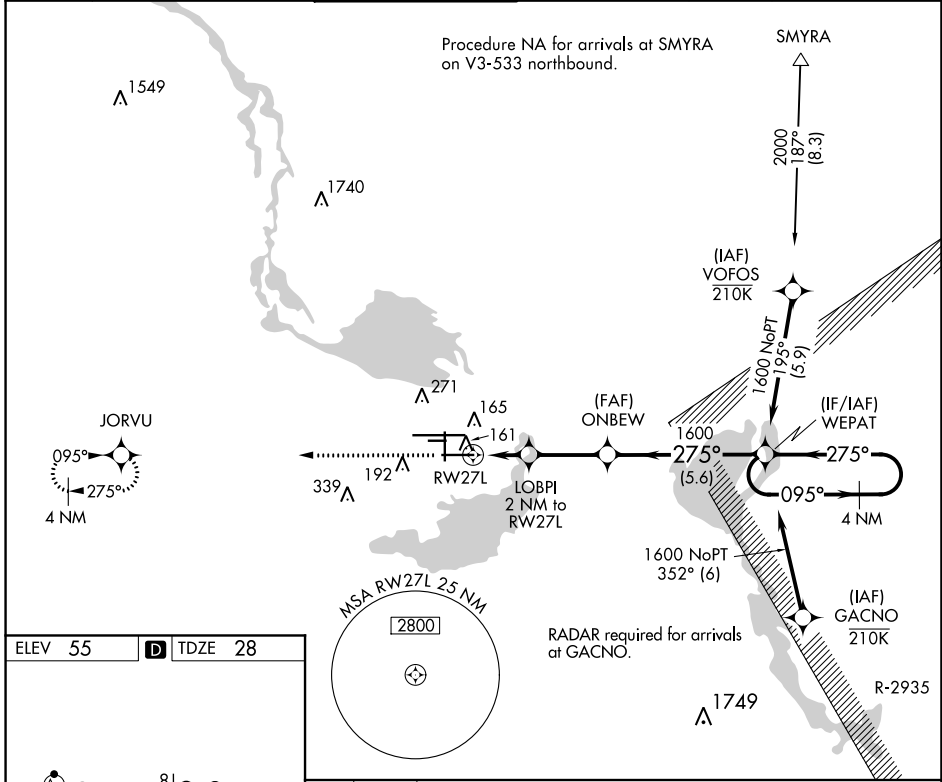
RNAV (GPS) RWY 27L

ORLANDO SANFORD INTL (SF'B)

▼ Night Landing: Rwy 27C NA. DME/DME RNP-0.3 NA. Visibility reduction by helicopters NA. When local altimeter setting not received, use Exec altimeter setting: increase all MDAs 60 feet and visibility Cat C ¼ SM. VDP NA when using Exec altimeter setting.

MISSED APPROACH: Climb to 2000 direct JORVU and hold.

ATIS	ORLANDO APP CON	SANFORD TOWER*	GND CON	CLNC DEL	CLNC DEL
125.975	135.3 351.9 (NORTH) 119.775 351.9 (SOUTH)	120.3(CTAF) 0 254.35	121.35 254.35	123.975	121.35 (when twr closed)



CATEGORY	A	B	C	D
LNNAV MDA	420-1	392 (400-1)	420-1½ 392 (400-1½)	420-2 392 (400-2)
C CIRCLING	580-1	525 (600-1)	600-1½ 545 (600-1½)	640-2 585 (600-2)

SE-3, 22 FEB 2024 to 21 MAR 2024

SE-3, 22 FEB 2024 to 21 MAR 2024

ORLANDO, FLORIDA

AL-917 (FAA)

23334

WAAS CH 63209 W27A	APP CRS 275°	Rwy Idg 11002 TDZE 45 Apt Elev 55
--	------------------------	--

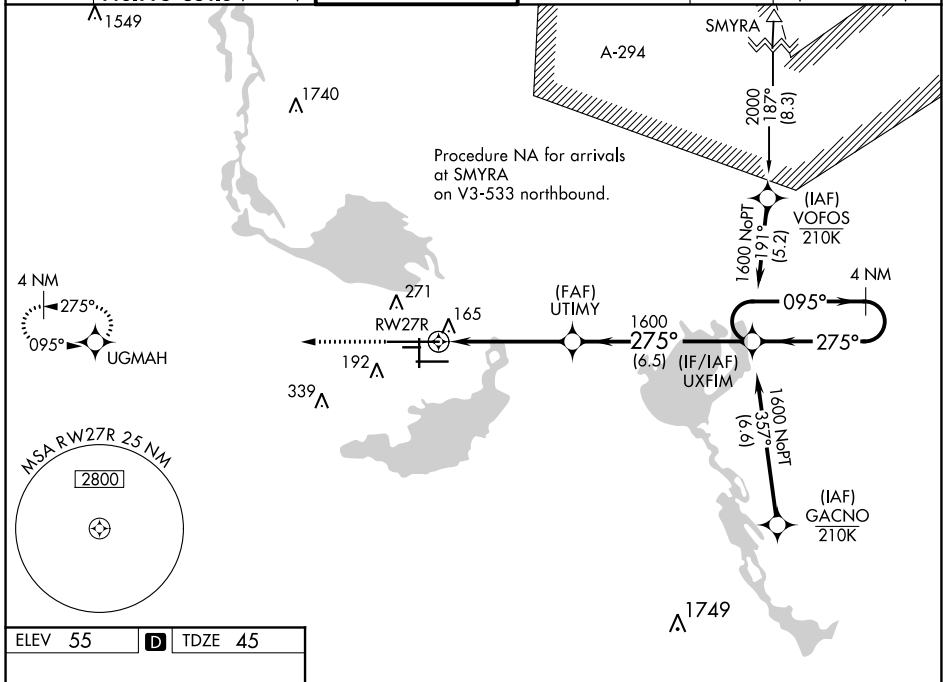
RNAV (GPS) RWY 27R

ORLANDO SANFORD INTL (SF'B)

▽ For uncompensated Baro-VNAV systems, LNAV/VNAV NA below 0°C (32°F) or above 54°C (130°F). DME/DME RNP-0.3 NA.
 For inop ALS, increase LNAV/VNAV all Cats visibility to 1¼ SM, increase LNAV Cat C/D visibility to 1 SM.

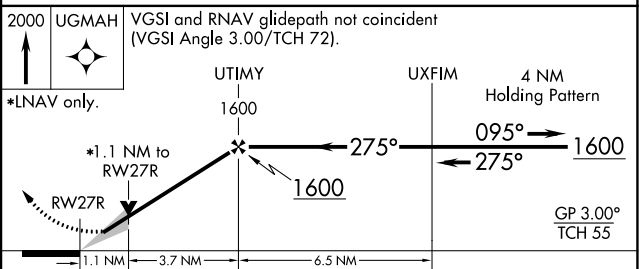
MALSR 	MISSED APPROACH: Climb to 2000 direct UGMAR and hold.
------------------	--

ATIS 125.975	ORLANDO APP CON 135.3 351.9 (NORTH) 119.775 351.9 (SOUTH)	SANFORD TOWER* 120.3(CTAF) 0 254.35	GND CON 121.35 254.35	CLNC DEL 123.975	CLNC DEL 121.35 (when twr dosed)
------------------------	--	--	---------------------------------	----------------------------	---



ELEV 55	D	TDZE 45
---------	----------	---------

MIRL Rwy 9C-27C and 18-36 **I**
 HIRL Rwy 9L-27R and 9R-27L **I**
 REIL Rwy 9C, 18, 27L and 36



CATEGORY	A		B		C		D
	LPV DA	245-½	200 (200-½)				
LNAV/VNAV DA	425-⅞	380 (400-⅞)					
LNAV MDA	420-½	375 (400-½)	420-⅝	375 (400-⅝)			
C CIRCLING	580-1	525 (600-1)	600-1½	545 (600-1½)	640-2	585 (600-2)	

ORLANDO, FLORIDA
Amdt 4 12OCT17

28°47'N-81°14'W

ORLANDO SANFORD INTL (SF'B)

RNAV (GPS) RWY 27R

SE-3, 22 FEB 2024 to 21 MAR 2024

SE-3, 22 FEB 2024 to 21 MAR 2024


WAAS CH 78409 W09A	APP CRS 095°	Rwy ldg 10002 TDZE 55 Apt Elev 55
-------------------------------------	---------------------	--

RNAV (GPS) RWY 9L

ORLANDO SANFORD INTL (SF'B)

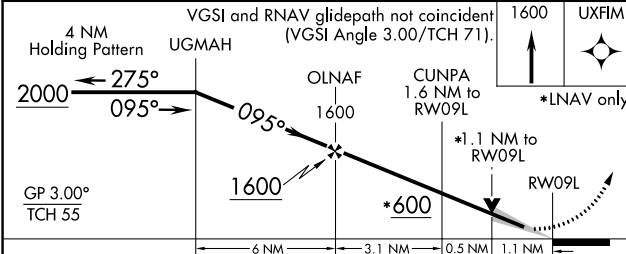
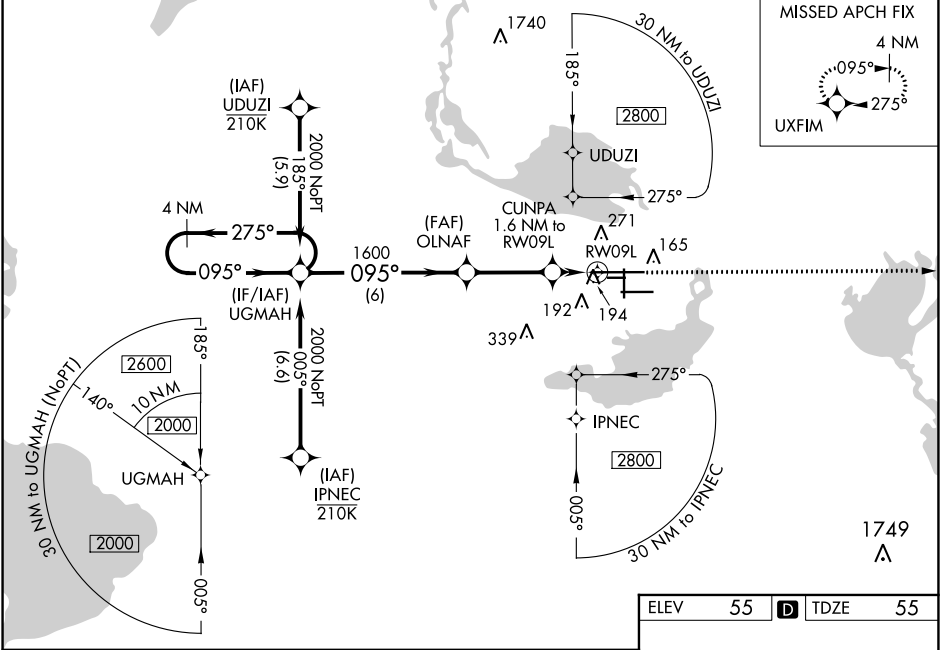
RNP APCH.

⚠ For uncompensated Baro-VNAV systems, LNAV/VNAV NA below 0°C or above 54°C. Baro-VNAV and VDP NA when using Exec altimeter setting. When local altimeter setting not received, use Exec altimeter setting and increase LPV DA to 282, LNAV/VNAV DA to 501 and all MDA 60 feet; increase LNAV/VNAV all Cats visibilities 1/8 SM and LNAV Cat C/D visibility 1/4 SM. Night landing: Rwy 27C NA.

MALSR 

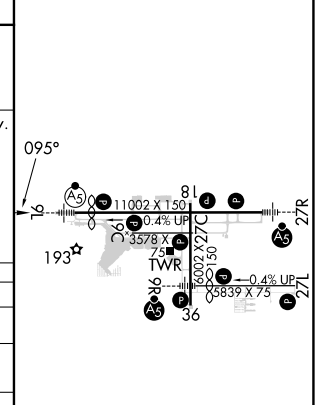
MISSED APPROACH: Climb to 1600 direct UXFIM and hold.

ATIS 125.975	ORLANDO APP CON 135.3 351.9 (NORTH) 119.775 351.9 (SOUTH)	SANFORD TOWER ★ 120.3 (CTAF) 0 254.35	GND CON 121.35 254.35	CLNC DEL 123.975	CLNC DEL 121.35 (when twr closed)
---------------------	--	---	------------------------------	-------------------------	---



ELEV 55	D TDZE 55
---------	------------------

CATEGORY	A	B	C	D
LPV DA		255-1/2	200 (200-1/2)	
LNAV/VNAV DA		355-1/2	300 (300-1/2)	
LNAV MDA	460-1/2 405 (500-1/2)		460-3/4 405 (500-3/4)	
C CIRCLING	580-1 525 (600-1)		600-1 1/2 545 (600-1 1/2)	640-2 585 (600-2)



MIRL Rwy 9C-27C and 18-36 **L**
 HIRL Rwy 9L-27R and 9R-27L **L**
 REIL Rwsy 9C, 18, 27L and 36

SE-3, 22 FEB 2024 to 21 MAR 2024

SE-3, 22 FEB 2024 to 21 MAR 2024

WAAS CH 48810 W09B	APP CRS 095°	Rwy ldg 5000 TDZE 39 Apt Elev 55
--	------------------------	---

RNAV (GPS) RWY 9R

ORLANDO SANFORD INTL (SF'B)

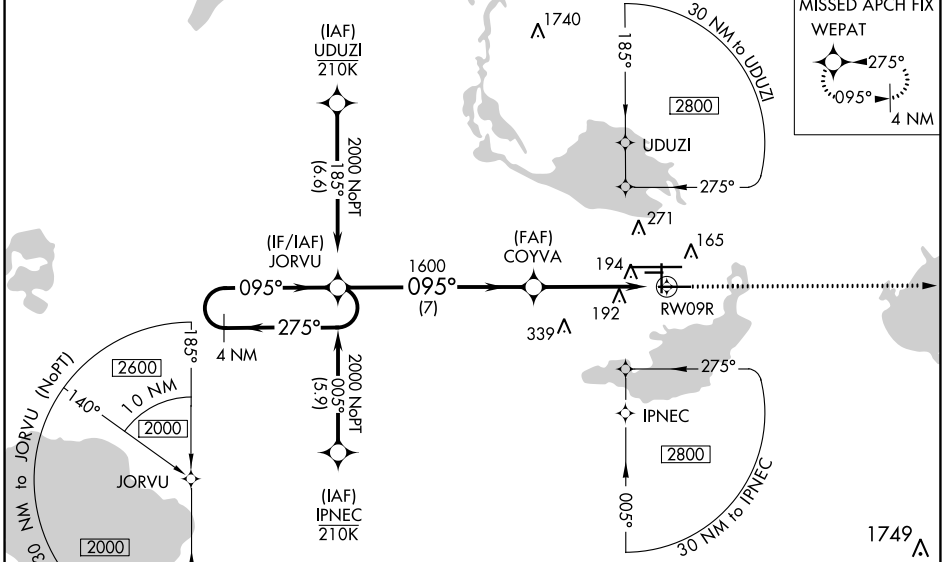
RNP APCH.

▼ For uncompensated Baro-VNAV systems, LNAV/VNAV NA below 0° C or above 54° C. Baro-VNAV and VDP NA when using Exec altimeter setting. When local altimeter setting not received, use Exec altimeter setting and increase LPV DA to 282, LNAV/VNAV DA to 501 and all MDA 60 feet; increase LNAV/VNAV all Cats visibilities 1/8 SM and LNAV Cat C/D visibility 1/4 SM. Night landing: Rwy 27C NA.



MISSED APPROACH: Climb to 1600 direct WEPAT and hold.

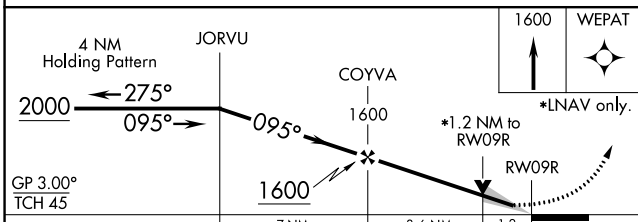
ATIS 125.975	ORLANDO APP CON 135.3 351.9 (NORTH) 119.775 351.9 (SOUTH)	SANFORD TOWER★ 120.3 (CTAF) 0 254.35	GND CON 121.35 254.35	CLNC DEL 123.975	CLNC DEL 121.35 (when twr closed)
------------------------	---	---	---------------------------------	----------------------------	--



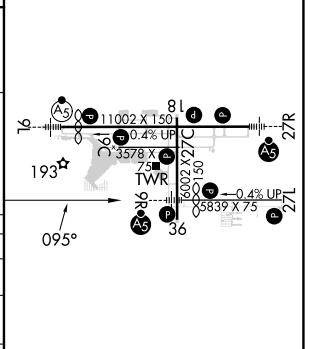
SE-3, 22 FEB 2024 to 21 MAR 2024

SE-3, 22 FEB 2024 to 21 MAR 2024

ELEV	55	TDZE	39
------	----	------	----



CATEGORY	A	B	C	D
LPV DA	239-1/2		200 (200-1/2)	
LNAV/VNAV DA	458-1		419 (500-1)	
LNAV MDA	460-1/2 421 (500-1/2)		460-3/4 421 (500-3/4)	
CIRCLING	580-1 525 (600-1)		600-1/2 545 (600-1/2) 640-2 585 (600-2)	



MIRL Rwy 9C-27C and 18-36
 HIRL Rwy 9L-27R and 9R-27L
 REIL Rwy 9C, 18, 27L and 36