

LOC/DME I-MOY 109.5 Chan 32	APP CRS 164°	Rwy Idg 12002 TDZE 4227 Apt Elev 4227
---	------------------------	--

ILS RWY 16L (CAT II & III)

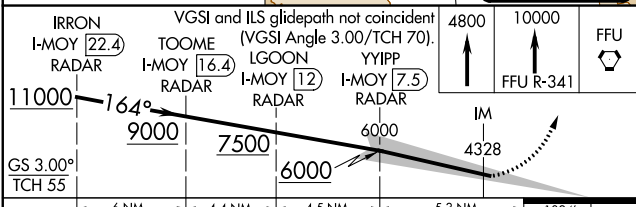
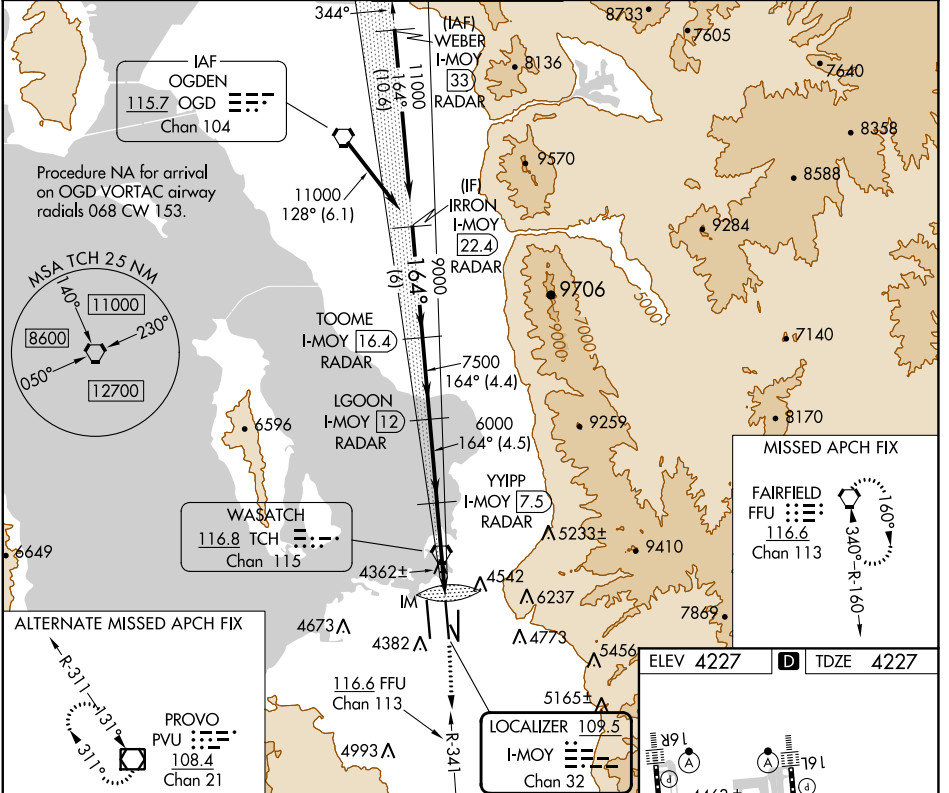
SALT LAKE CITY INTL (SLC)

Simultaneous approach authorized. DME or RADAR required.
 CAT II: RVR 1000 authorized with specific OPSPEC, MSPEC, or LOA approval and use of autoland or HUD to touchdown.

ALSF-2

MISSED APPROACH: Climb to 4800 then climb to 10000 on FFU VORTAC R-341 to FFU VORTAC and hold.

D-ATIS 124.75 125.625	SALT LAKE CITY APP CON 125.7 284.6	SALT LAKE CITY TOWER 119.05 257.8	GND CON 123.775 348.6	CLNC DEL 127.3 379.975	CPDLC
---------------------------------	--	---	---------------------------------	----------------------------------	-------



CATEGORY	A	B	C	D
S-ILS 16L	CAT II RA 108/12 100 DA 4327			
S-ILS 16L	CAT IIIa RVR 07			
S-ILS 16L	CAT IIIb RVR 03			
S-ILS 16L	CAT IIIc NA			

CATEGORY II & III ILS - SPECIAL AIRCREW & AIRCRAFT CERTIFICATION REQUIRED

HIRL all Rwws
 TDZ/CL Rwws 16L, 16R, 17, 34L, 34R and 35

SW-4, 22 FEB 2024 to 21 MAR 2024

SW-4, 22 FEB 2024 to 21 MAR 2024

LOC/DME I-UAT 111.9 Chan 56	APP CRS 164°	Rwy ldg 12000 TDZE 4223 Apt Elev 4227
---	------------------------	---

ILS RWY 16R (CAT II & III)

SALT LAKE CITY INTL (SLC)

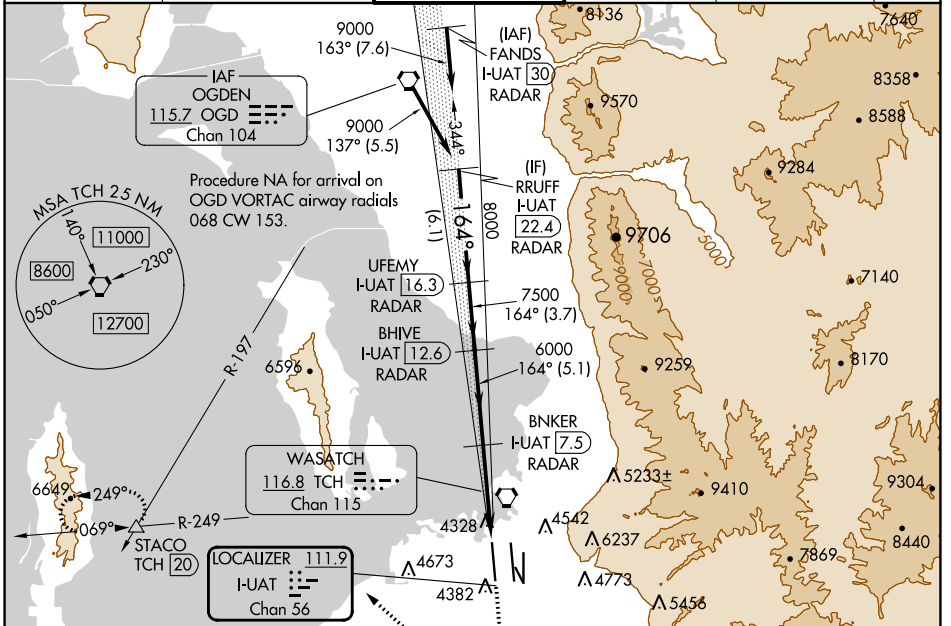
DME or RADAR required.

Simultaneous approach authorized.
CAT II: RVR 1000 authorized with specific OPSPEC, MSPEC, or LOA approval and use of autoland or HUD to touchdown.

ALSF-2

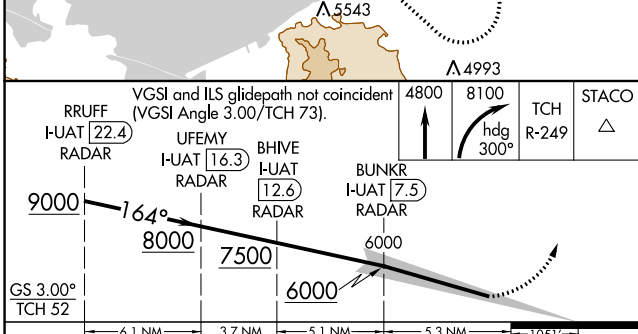
MISSED APPROACH: Climb to 4800 then climbing right turn to 8100 on heading 300° and on TCH VORTAC R-249 to STACO INT/TCH 20 DME and hold.

D-ATIS 124.75 125.625	SALT LAKE CITY APP CON 125.7 284.6	SALT LAKE CITY TOWER 132.65 336.4	GND CON 123.775 348.6	CLNC DEL 127.3 379.975	CPDLC
---------------------------------	--	---	---------------------------------	----------------------------------	-------

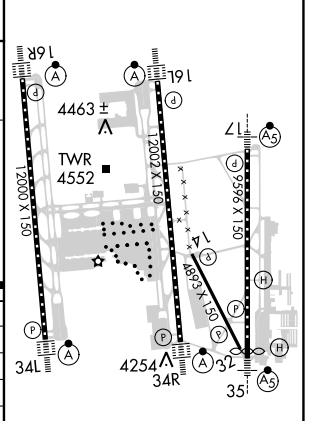


SW-4, 22 FEB 2024 to 21 MAR 2024

SW-4, 22 FEB 2024 to 21 MAR 2024



ELEV 4227	D	TDZE 4223
-----------	---	-----------



CATEGORY	A	B	C	D
S-ILS 16R	CAT II RA 108/12 100 DA 4323			
S-ILS 16R	Cat IIIa		RVR 07	
S-ILS 16R	Cat IIIb		RVR 03	
S-ILS 16R	Cat IIIc		NA	

CATEGORY II & III ILS - SPECIAL AIRCREW & AIRCRAFT CERTIFICATION REQUIRED

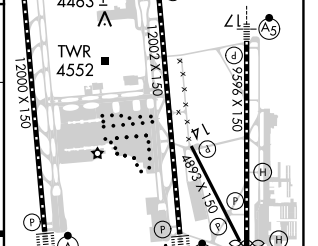
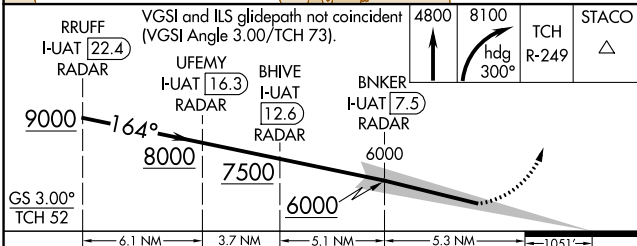
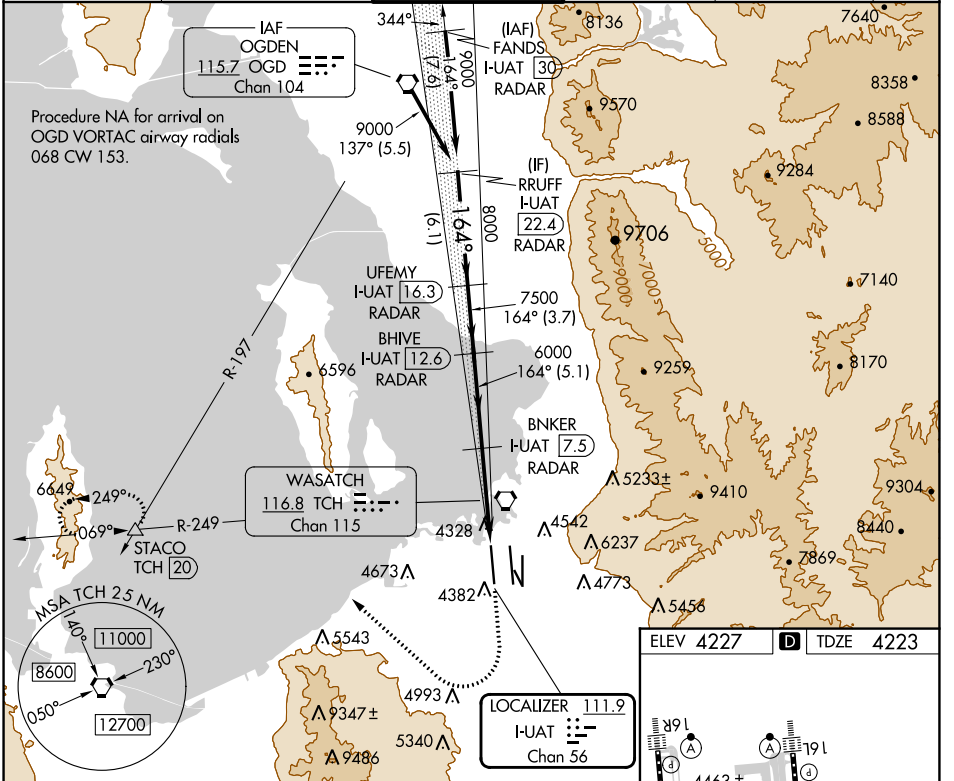
HIRL all Rwws
TDZ/CL Rwws 16L, 16R, 17, 34L, 34R, and 35

LOC/DME I-UAT 111.9 Chan 56	APP CRS 164°	Rwy ldg 12000 TDZE 4223 Apt Elev 4227
--	------------------------	---

ILS RWY 16R (SA CAT I)

SALT LAKE CITY INTL (SLC)

DME or RADAR required.		ALSIF-2	MISSED APPROACH: Climb to 4800 then climbing right turn to 8100 on heading 300° and on TCH VORTAC R-249 to STACO INT/TCH 20 DME and hold.		
▼ Simultaneous approach authorized. Requires specific OPSPEC, MSPEC, or LOA approval and use of HUD to DH.		(A)			
D-ATIS 124.75 125.625	SALT LAKE CITY APP CON 125.7 284.6	SALT LAKE CITY TOWER 132.65 336.4	GND CON 123.775 348.6	CLNC DEL 127.3 379.975	CPDLC



CATEGORY	A	B	C	D
S-ILS 16R	RA 157/14 150 DA 4373			
SA CATEGORY I ILS - SPECIAL AIRCREW & AIRCRAFT CERTIFICATION REQUIRED				

SW-4, 22 FEB 2024 to 21 MAR 2024

SW-4, 22 FEB 2024 to 21 MAR 2024

LOC/DME I-BNT 111.5 Chan 52	APP CRS 169°	Rwy Idg TDZE Apt Elev	9596 4219 4227
--	------------------------	-----------------------------	---

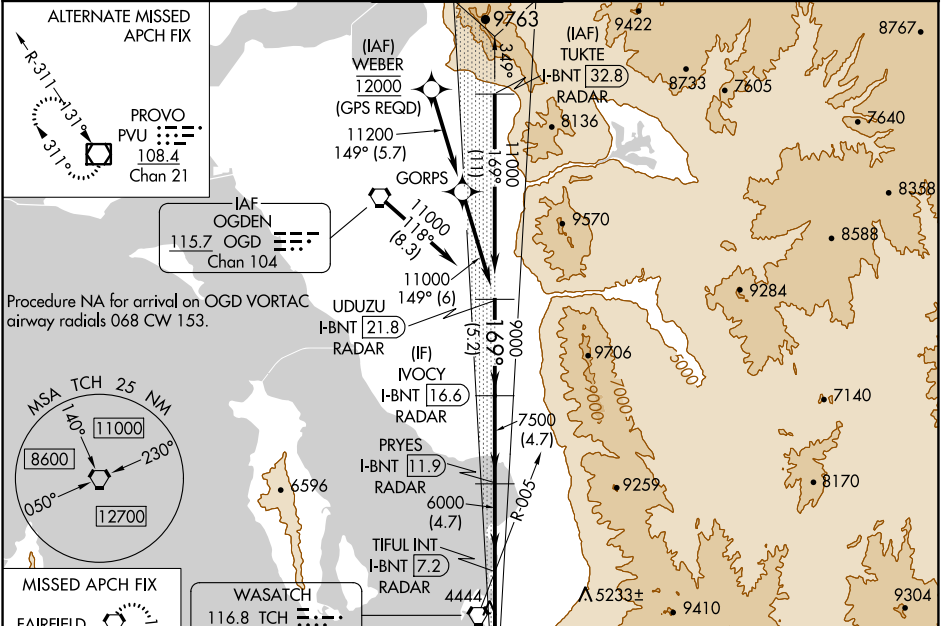
ILS RWY 17 (SA CAT I & II)

SALT LAKE CITY INTL (SLC)

▼ DME or RADAR required. Simultaneous approach authorized. SA CAT I: Requires specific OPSPEC, MSPEC, or LOA approval and use of HUD to DH. SA CAT II: Reduced lighting: Requires specific OPSPEC, MSPEC, or LOA approval and use of autoland or HUD to touchdown.

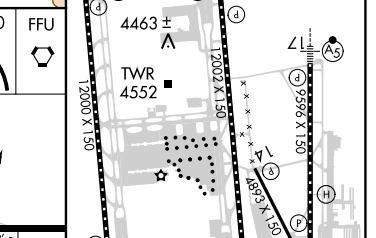
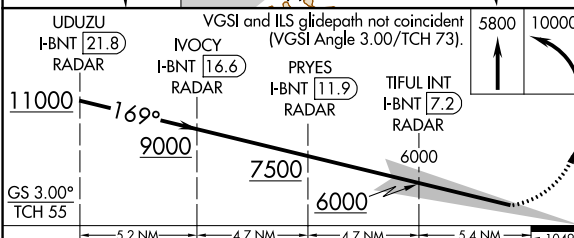
MALS MISSED APPROACH: Climb to 5800 then climbing left turn to 10000 direct FFU VORTAC and hold.

D-ATIS 124.75 125.625	SALT LAKE CITY APP CON 125.7 284.6	SALT LAKE CITY TOWER 118.3 257.8	GND CON 121.9 348.6	CLNC DEL 127.3 379.975	CPDLC
---------------------------------	--	--	-------------------------------	----------------------------------	-------



UDUZU I-BNT 21.8 RADAR	VOXY I-BNT 16.6 RADAR	PRYES I-BNT 11.9 RADAR	TIFUL INT I-BNT 7.2 RADAR
------------------------	-----------------------	------------------------	---------------------------

ELEV 4227	D TDZE 4219
-----------	--------------------



CATEGORY	A	B	C	D
S-ILS 17	SA CAT I RA 149/14 150 DA 4369			
S-ILS 17	SA CAT II RA 99/12 100 DA 4319			

HIRL all Rwws	
TDZ/CL Rwws 16L, 16R, 17, 35, 34L, and 34R	

SA CATEGORY I & II ILS - SPECIAL AIRCREW & AIRCRAFT CERTIFICATION REQUIRED

SW-4, 22 FEB 2024 to 21 MAR 2024

SW-4, 22 FEB 2024 to 21 MAR 2024

LOC/DME I-UUH 111.9 Chan 56	APP CRS 344°	Rwy Idg TDZE 12000 4229	Apt Elev 4231
--	------------------------	---	-------------------------

ILS RWY 34L (CAT II & III)

SALT LAKE CITY INTL (SLC)

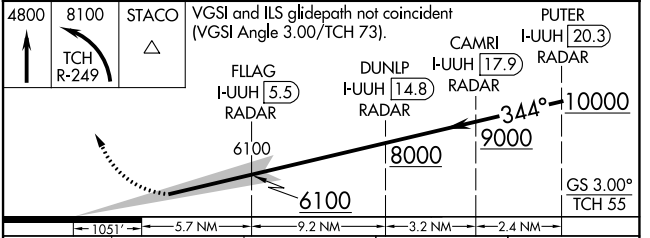
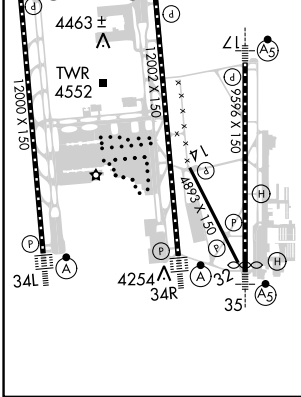
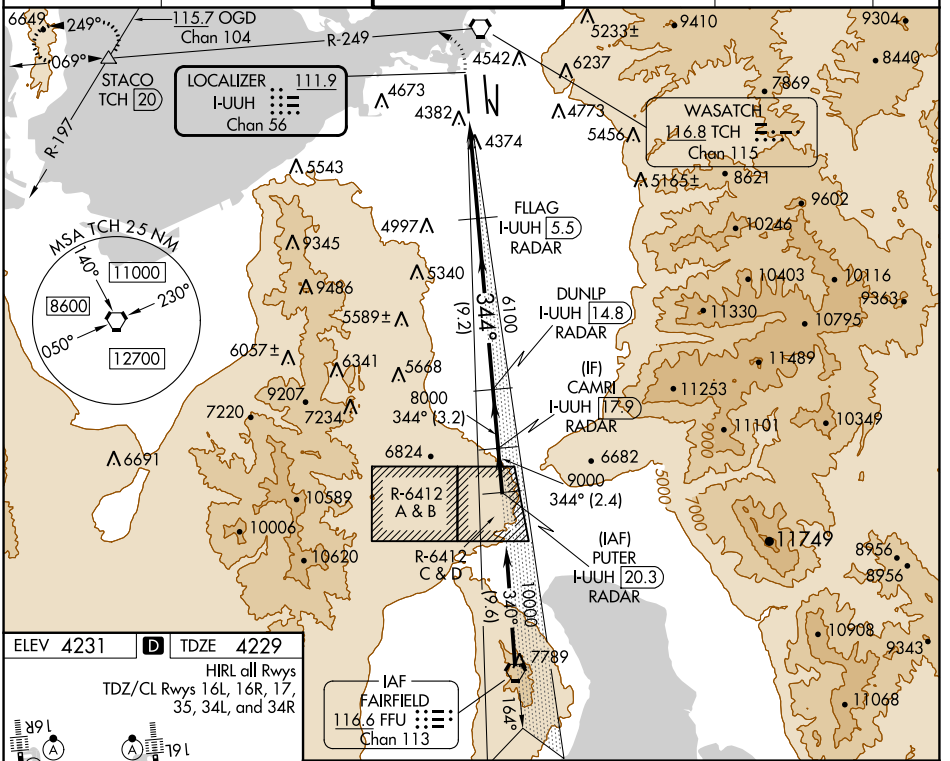
RADAR required for arrivals at PUTER. DME or RADAR required.

Simultaneous approach authorized.
CAT II: RVR 1000 authorized with specific OPSPEC, MSPEC or LOA approval and use of autoland or HUD to touchdown.

ALSF-2

MISSED APPROACH: Climb to 4800 then climbing left turn to 8100 on TCH VORTAC R-249 to STACO INT/TCH 20 DME and hold.

D-ATIS 124.75 125.625	SALT LAKE CITY APP CON 125.7 284.6	SALT LAKE CITY TOWER 132.65 336.4	GND CON 123.775 348.6	CLNC DEL 127.3 379.975	CPDLC
---------------------------------	--	---	---------------------------------	----------------------------------	-------



CATEGORY	A	B	C	D
S-ILS 34L	CAT II RA 102/12 100 DA 4329			
S-ILS 34L	CAT III RVR 03			

CATEGORY II & III ILS - SPECIAL AIRCREW & AIRCRAFT CERTIFICATION REQUIRED

SW-4, 22 FEB 2024 to 21 MAR 2024

SW-4, 22 FEB 2024 to 21 MAR 2024

LOC/DME I-UUJH 111.9 Chan 56	APP CRS 344°	Rwy Idg TDZE 12000 4229	Apt Elev 4231
---	------------------------	---	-------------------------

ILS RWY 34L (SA CAT I)

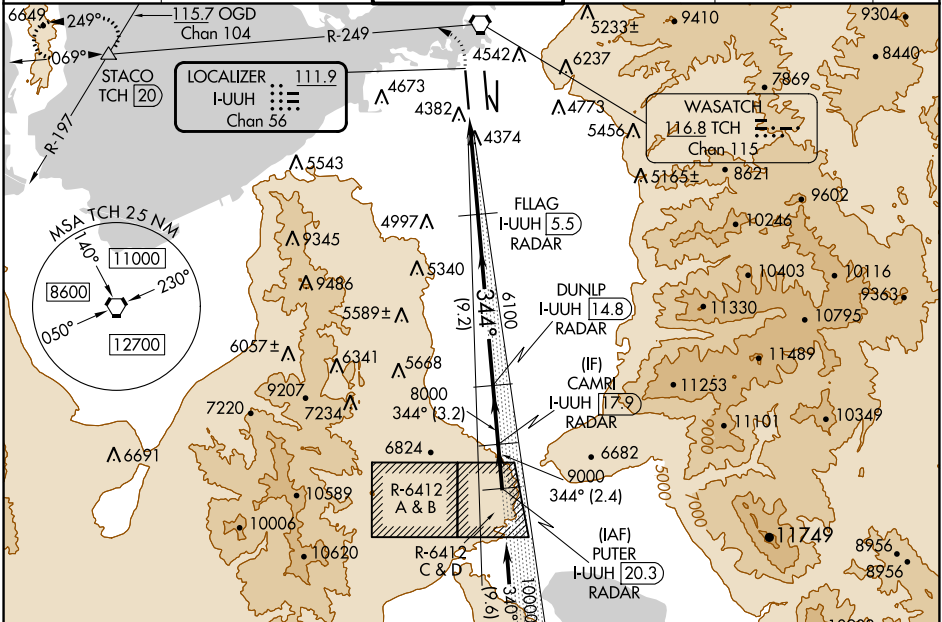
SALT LAKE CITY INTL (SLC)

RADAR required for arrivals at PUTER. DME or RADAR required.

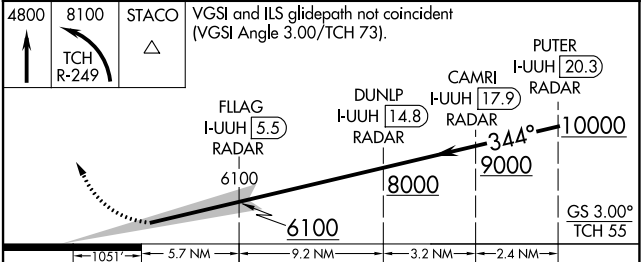
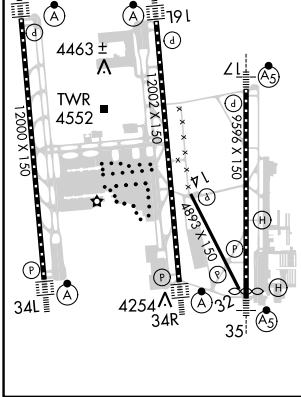
ALSF-2

MISSED APPROACH: Climb to 4800 then climbing left turn to 8100 on TCH R-249 to STACO INT/TCH 20 DME and hold.

D-ATIS 124.75 125.625	SALT LAKE CITY APP CON 125.7 284.6	SALT LAKE CITY TOWER 132.65 336.4	GND CON 123.775 348.6	CLNC DEL 127.3 379.975	CPDLC
---------------------------------	--	---	---------------------------------	----------------------------------	-------



ELEV 4231	D	TDZE 4229
HIRL all Rwys TDZ/CL Rwys 16L, 16R, 17, 35, 34L, and 34R		



CATEGORY	A	B	C	D
S-ILS 34L	RA 158/14 150 DA 4379			

SA CATEGORY I ILS - SPECIAL AIRCREW & AIRCRAFT CERTIFICATION REQUIRED

SW-4, 22 FEB 2024 to 21 MAR 2024

SW-4, 22 FEB 2024 to 21 MAR 2024

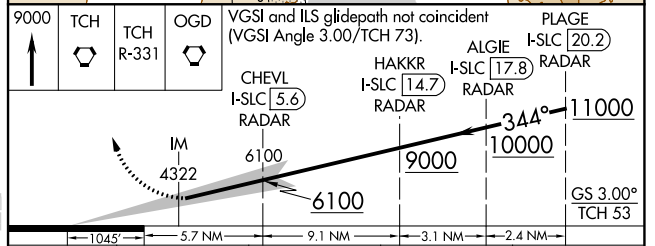
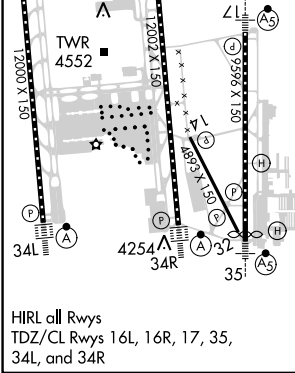
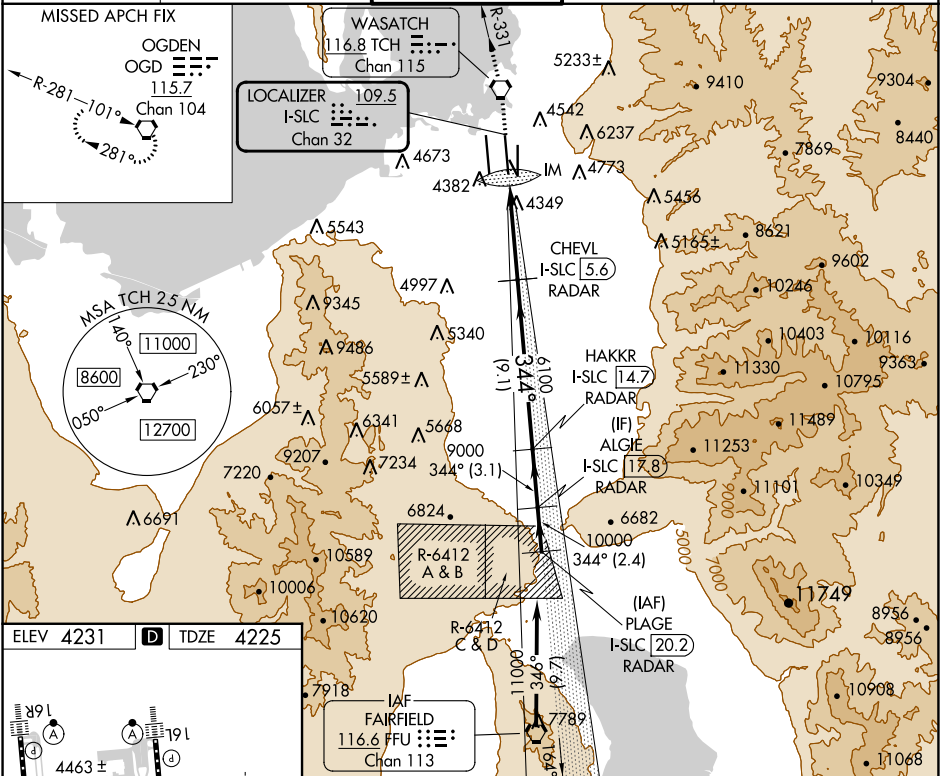
LOC/DME I-SLC 109.5 Chan 32	APP CRS 344°	Rwy Idg 12002 TDZE 4225 Apt Elev 4231
---	------------------------	--

ILS RWY 34R (CAT II & III)

SALT LAKE CITY INTL (SLC)

Simultaneous approach authorized. CAT II: RVR 1000 authorized with specific OPSPEC, MSPEC, or LOA approval and use of autoland or HUD to touchdown.	ALSIF-2 	MISSED APPROACH: Climb to 9000 direct TCH VORTAC and on TCH VORTAC R-331 to OGD VORTAC and hold.
--	-------------	--

D-ATIS 124.75 125.625	SALT LAKE CITY APP CON 125.7 284.6	SALT LAKE CITY TOWER 119.05 257.8	GND CON 123.775 348.6	CLNC DEL 127.3 379.975	CPDLC
---------------------------------	--	---	---------------------------------	----------------------------------	-------



CATEGORY	A	B	C	D
S-ILS 34R	CAT II RA 100/12 100 DA 4325			
S-ILS 34R	CAT III RVR 03			

CATEGORY II & III ILS - SPECIAL AIRCREW & AIRCRAFT CERTIFICATION REQUIRED

SW-4, 22 FEB 2024 to 21 MAR 2024

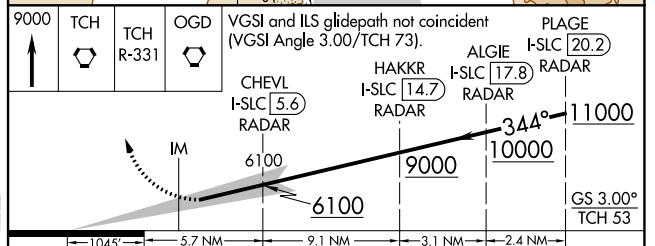
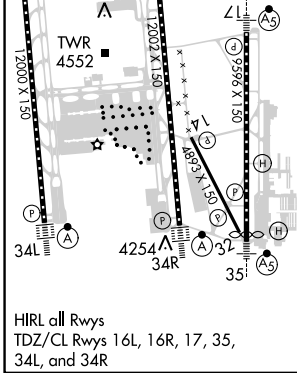
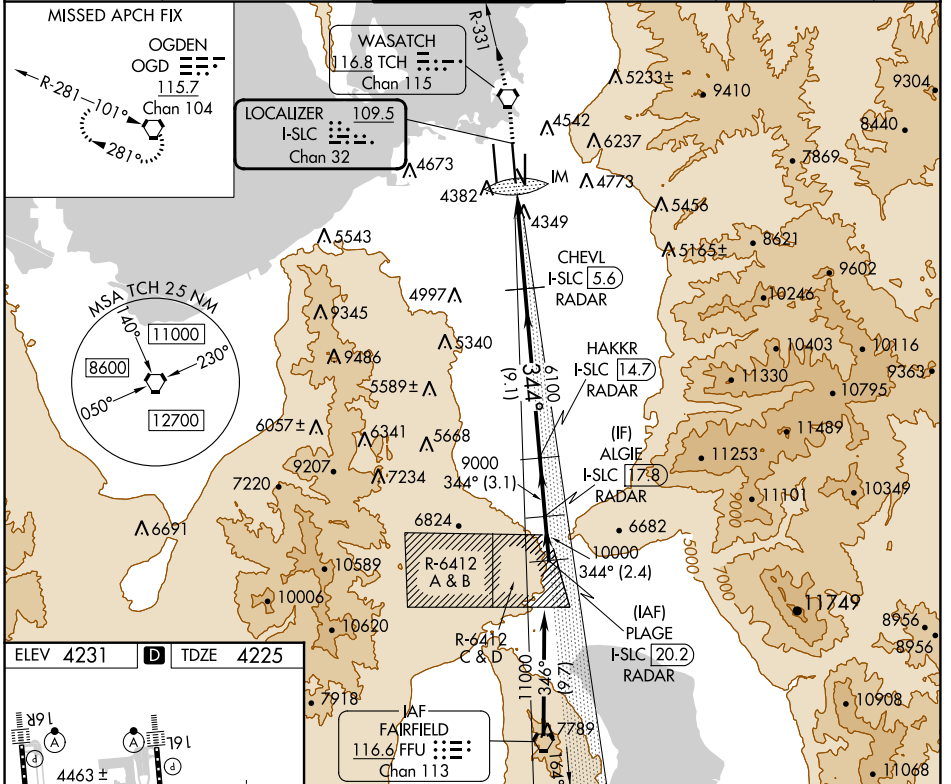
SW-4, 22 FEB 2024 to 21 MAR 2024

LOC/DME I-SLC 109.5 Chan 32	APP CRS 344°	Rwy Idg 12002 TDZE 4225 Apt Elev 4231
--	------------------------	--

ILS RWY 34R (SA CAT I)

SALT LAKE CITY INTL (SLC)

Simultaneous approach authorized. Requires specific OPSPEC, MSPEC, or LOA approval.		ALSF-2 	MISSED APPROACH: Climb to 9000 direct TCH VORTAC and on TCH VORTAC R-331 to OGD VORTAC and hold.		
D-ATIS 124.75 125.625	SALT LAKE CITY APP CON 125.7 284.6	SALT LAKE CITY TOWER 119.05 257.8	GND CON 123.775 348.6	CLNC DEL 127.3 379.975	CPDLC



CATEGORY	A	B	C	D
S-ILS 34R	RA 151/14 150 DA 4375			
SA CATEGORY I ILS - SPECIAL AIRCREW & AIRCRAFT CERTIFICATION REQUIRED				

SW-4, 22 FEB 2024 to 21 MAR 2024

SW-4, 22 FEB 2024 to 21 MAR 2024

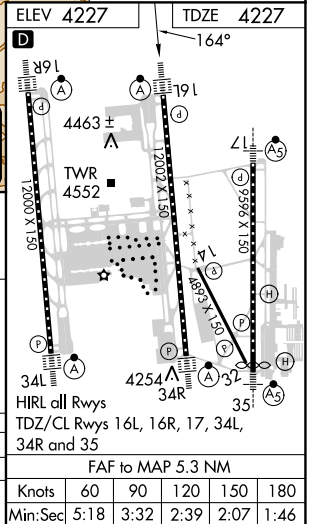
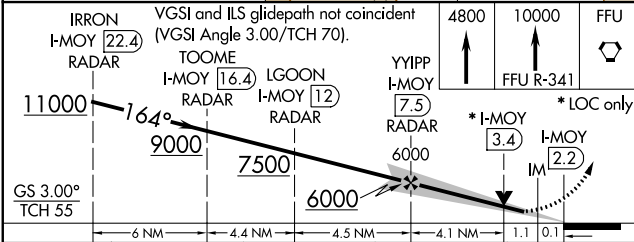
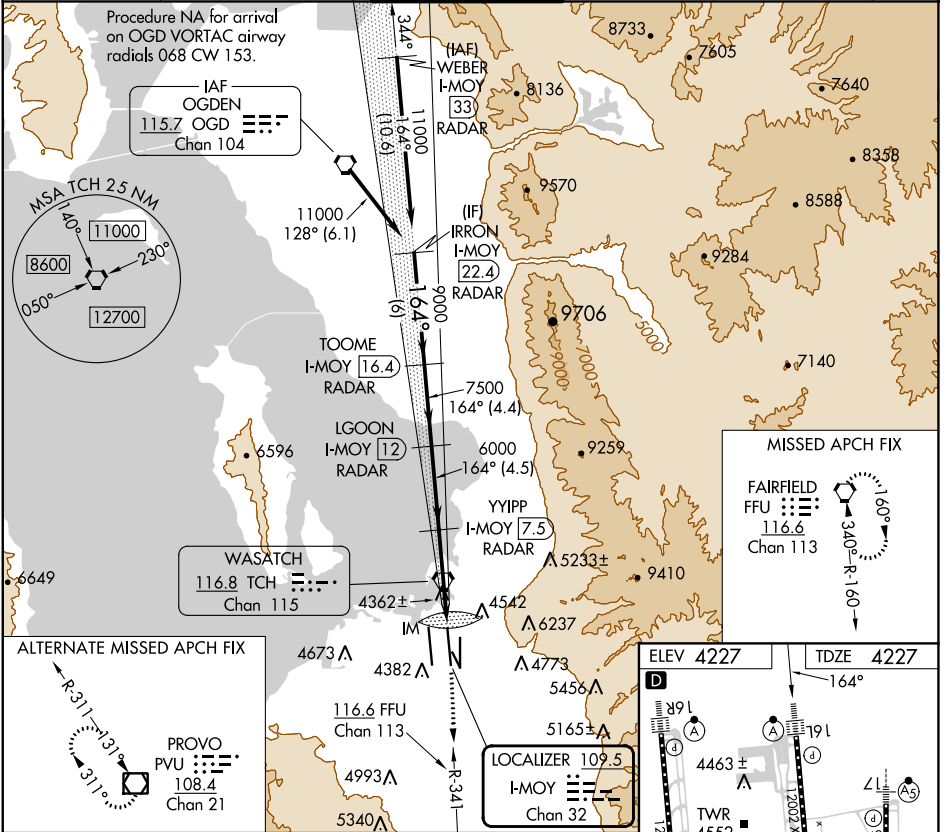
LOC/DME I-MOY 109.5 Chan 32	APP CRS 164°	Rwy Idg TDZE Apt Elev	12002 4227 4227
---	------------------------	-----------------------------	--

ILS or LOC RWY 16L

SALT LAKE CITY INTL (SLC)

Simultaneous approach authorized. DME or RADAR required.	ALSF-2 	MISSED APPROACH: Climb to 4800 then climb to 10000 on FFU VORTAC R-341 to FFU VORTAC and hold.

D-ATIS 124.75 125.625	SALT LAKE CITY APP CON 125.7 284.6	SALT LAKE CITY TOWER 119.05 257.8	GND CON 123.775 348.6	CLNC DEL 127.3 379.975	CPDLC
---------------------------------	--	---	---------------------------------	----------------------------------	-------



CATEGORY	A	B	C	D
S-ILS 16L		4427/18	200 (200-½)	
S-LOC 16L	4680/24	453 (500-½)	4680/40 453 (500-¾)	4680/50 453 (500-1)

SW-4, 22 FEB 2024 to 21 MAR 2024

SW-4, 22 FEB 2024 to 21 MAR 2024

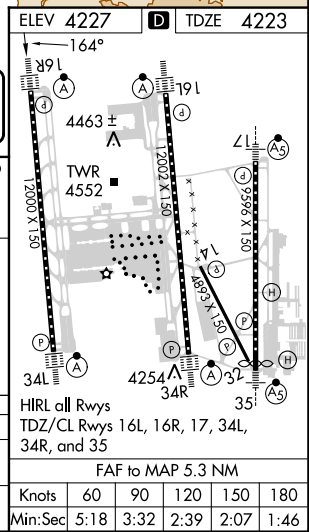
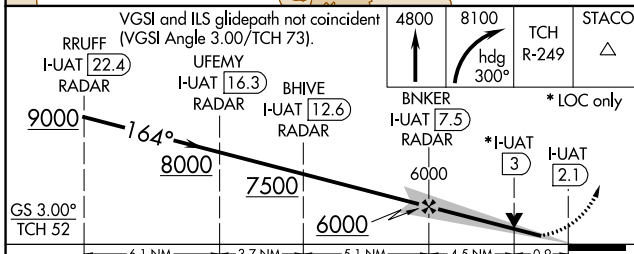
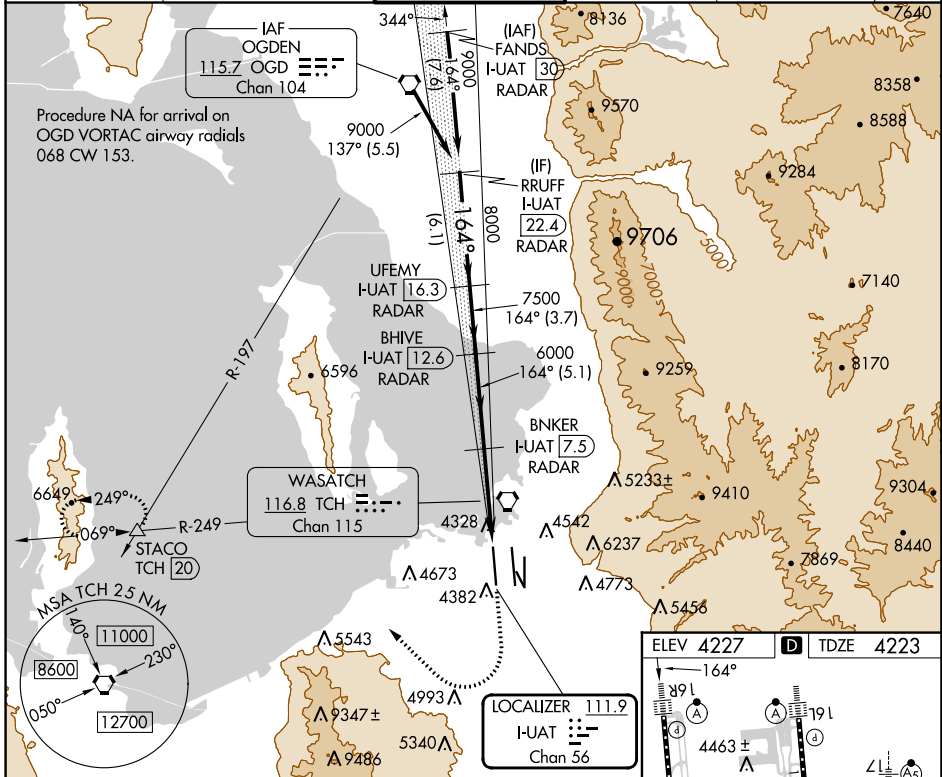
LOC/DME I-UAT 111.9 Chan 56	APP CRS 164°	Rwy ldg 12000 TDZE 4223 Apt Elev 4227
---	------------------------	--

ILS or LOC RWY 16R

SALT LAKE CITY INTL (SLC)

DME or RADAR required.	ALSF-2	MISSED APPROACH: Climb to 4800 then climbing right turn to 8100 on heading 300° and on TCH VORTAC R-249 to STACO INT/TCH 20 DME and hold.
▼ Simultaneous approach authorized. For inop ALS, increase S-LOC 16R Cat C and D visibilities to RVR 5500.		

D-ATIS 124.75 125.625	SALT LAKE CITY APP CON 125.7 284.6	SALT LAKE CITY TOWER 132.65 336.4	GND CON 123.775 348.6	CLNC DEL 127.3 379.975	CPDLC
---------------------------------	--	---	---------------------------------	----------------------------------	-------



CATEGORY	A	B	C	D
S-ILS 16R	4423/18		200 (200-½)	
S-LOC 16R	4580/24	357 (400-½)	4580/30 357 (400-¾)	4580/40 357 (400-¾)

FAF to MAP 5.3 NM					
Knots	60	90	120	150	180
Min:Sec	5:18	3:32	2:39	2:07	1:46

SW-4, 22 FEB 2024 to 21 MAR 2024

SW-4, 22 FEB 2024 to 21 MAR 2024

LOC/DME I-BNT 111.5 Chan 52	APP CRS 169°	Rwy Idg TDZE Apt Elev	9596 4219 4227
--	------------------------	-----------------------------	---

ILS or LOC RWY 17

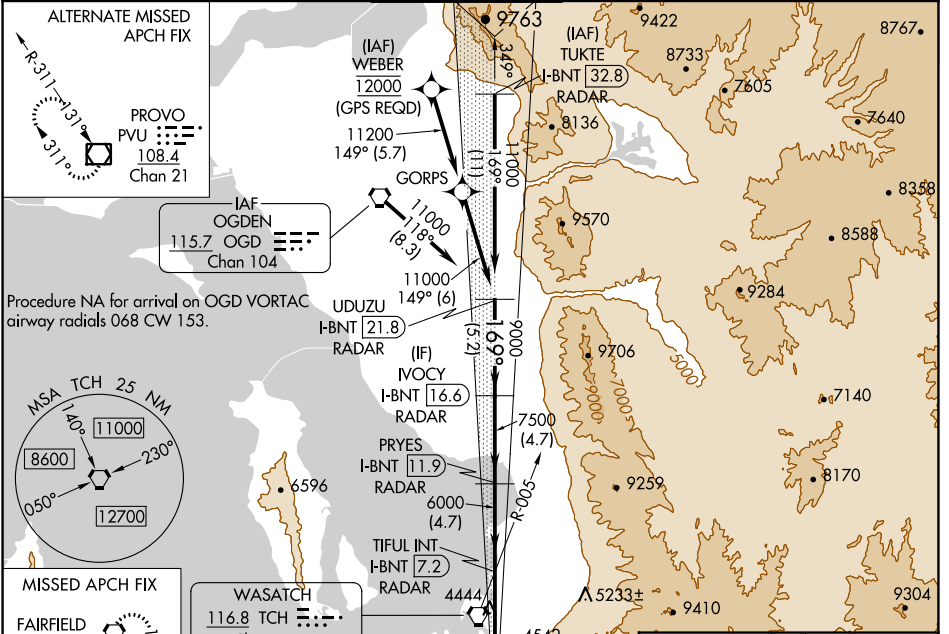
SALT LAKE CITY INTL (SLC)

▼ DME or RADAR required. Simultaneous approach authorized. For inop ALS, increase S-ILS 17 Cat E visibility to RVR 4000, increase S-LOC 17 Cat C/D/E visibility to 1 $\frac{1}{2}$ SM.

MALSR 

MISSED APPROACH: Climb to 5800 then climbing left turn to 10000 direct FFU VORTAC and hold.

D-ATIS 124.75 125.625	SALT LAKE CITY APP CON 125.7 284.6	SALT LAKE CITY TOWER 118.3 257.8	GND CON 121.9 348.6	CLNC DEL 127.3 379.975	CPDLC
---------------------------------	--	--	-------------------------------	----------------------------------	-------



MISSED APCH FIX

UDUZU I-BNT [21.8] RADAR

VGSI and ILS glidepath not coincident (VGSI Angle 3.00/TCH 73).

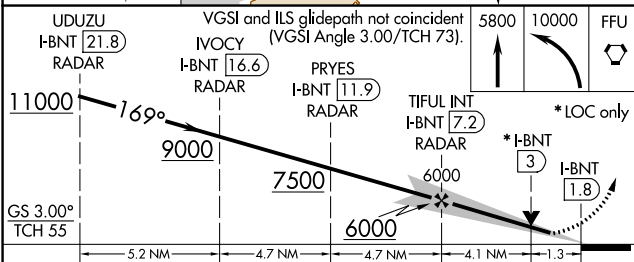
IVOCY I-BNT [16.6] RADAR

PRYES I-BNT [11.9] RADAR

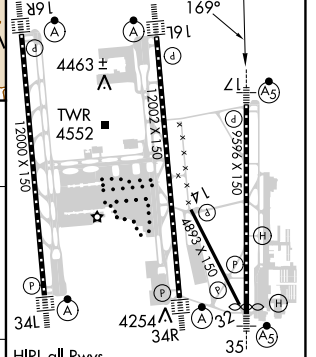
TIFUL INT I-BNT [7.2] RADAR

WASATCH 116.8 TCH Chan 115

LOCALIZER 111.5 I-BNT Chan 52



ELEV 4227	D	TDZE 4219
-----------	----------	-----------



CATEGORY	A	B	C	D	E
S-ILS 17	4419/18 200 (200- $\frac{1}{2}$)				
S-LOC 17	4700/24	481 (500- $\frac{1}{2}$)	4700/50 481 (500-1)		

SW-4, 22 FEB 2024 to 21 MAR 2024

SW-4, 22 FEB 2024 to 21 MAR 2024

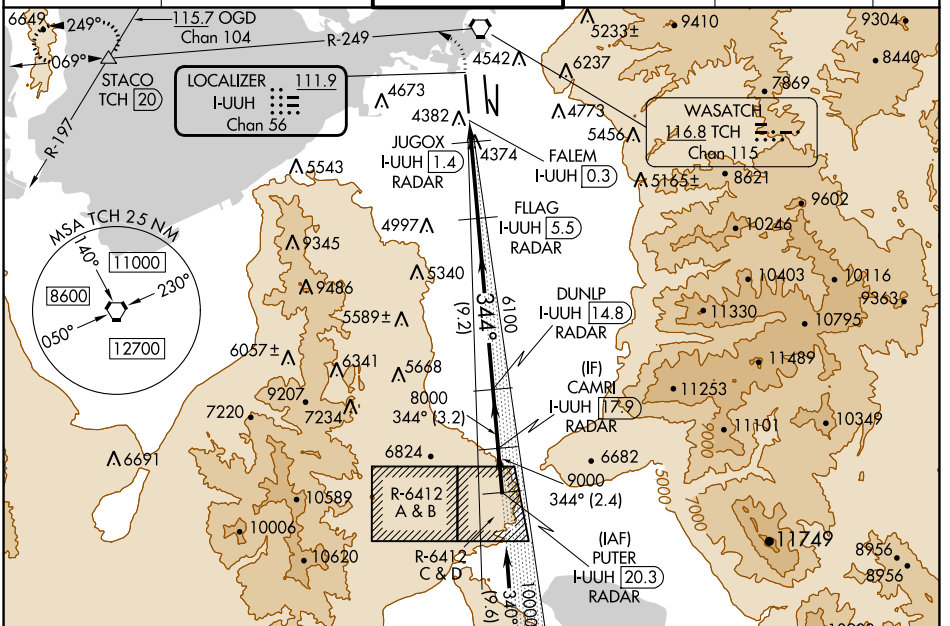
LOC/DME I-UUH 111.9 Chan 56	APP CRS 344°	Rwy Idg TDZE 12000 4229 Apt Elev 4231
--	------------------------	--

ILS or LOC RWY 34L

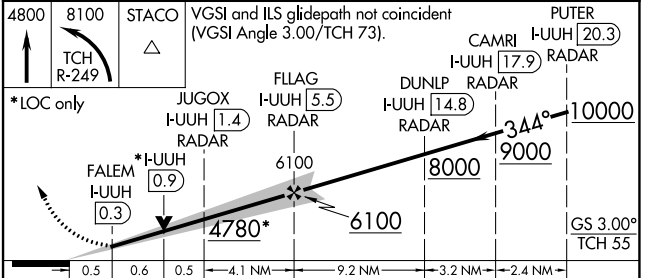
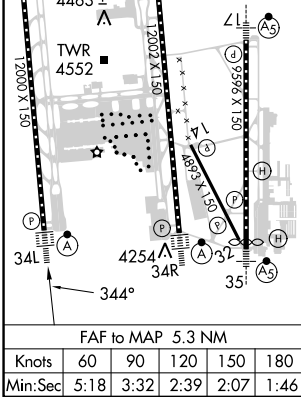
SALT LAKE CITY INTL (SLC)

RADAR required for arrivals at PUTER. DME or RADAR required.		ALSIF-2 	MISSED APPROACH: Climb to 800 then climbing left turn to 8100 on TCH VORTAC R-249 to STACO INT/TCH 20 DME and hold.
<p>Simultaneous approach authorized. For inop ALS, increase S-LOC 34L Cat C/D visibility to RVR 6000.</p>			

D-ATIS 124.75 125.625	SALT LAKE CITY APP CON 125.7 284.6	SALT LAKE CITY TOWER 132.65 336.4	GND CON 123.775 348.6	CLNC DEL 127.3 379.975	CPDLC
---------------------------------	--	---	---------------------------------	----------------------------------	-------



ELEV 4231	TDZE 4229
HIRL all Rwys TDZ/CL Rwys 16L, 16R, 17, 35, 34L, and 34R	



CATEGORY	A	B	C	D
S-ILS 34L	4429/18 200 (200-½)			
S-LOC 34L	4640/24	411 (500-½)	4640/40	411 (500-¾)

SW-4, 22 FEB 2024 to 21 MAR 2024

SW-4, 22 FEB 2024 to 21 MAR 2024

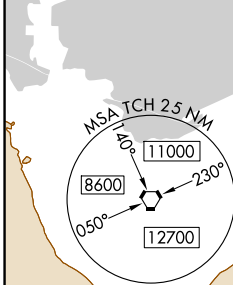
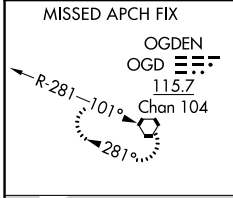
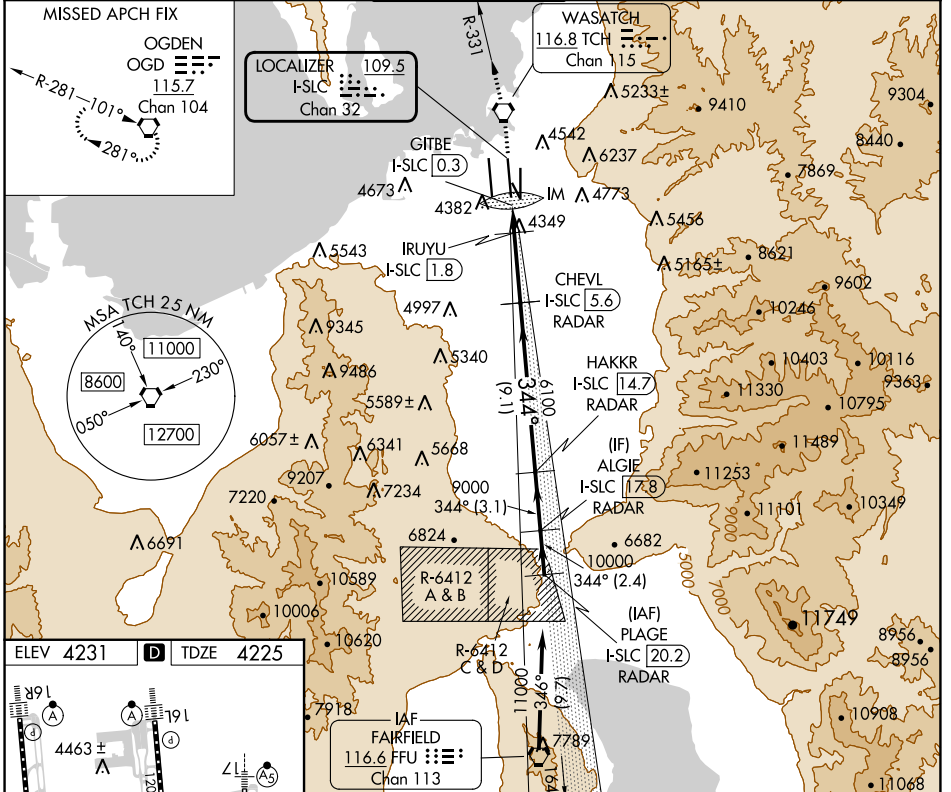
LOC/DME I-SLC 109.5 Chan 32	APP CRS 344°	Rwy Idg TDZE Apt Elev	12002 4225 4231
--	------------------------	-----------------------------	--

ILS or LOC RWY 34R

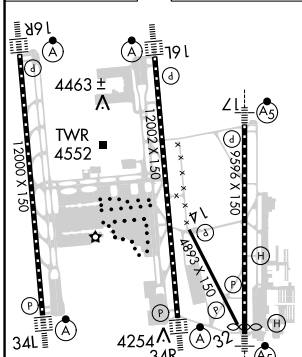
SALT LAKE CITY INTL (SLC)

DME required for LOC only. Simultaneous approach authorized.		ALSF-2 	MISSED APPROACH: Climb to 9000 direct TCH VORTAC and on TCH VORTAC R-331 to OGD VORTAC and hold.	
---	--	------------	--	--

D-ATIS 124.75 125.625	SALT LAKE CITY APP CON 125.7 284.6	SALT LAKE CITY TOWER 119.05 257.8	GND CON 123.775 348.6	CLNC DEL 127.3 379.975	CPDLC
---------------------------------	--	---	---------------------------------	----------------------------------	-------

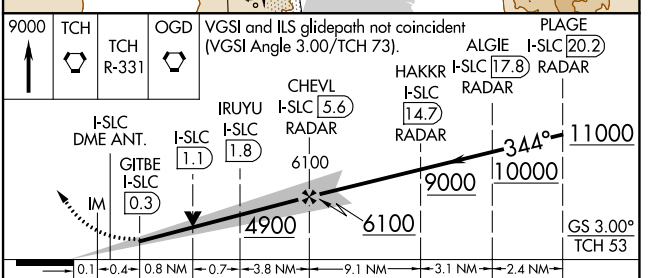


ELEV 4231	D	TDZE 4225
-----------	----------	-----------



HIRL all Rwys
TDZ/CL Rwys 16L, 16R, 17, 35, 34L, and 34R

FAF to MAP 5.3 NM					
Knots	60	90	120	150	180
Min:Sec	5:18	3:32	2:39	2:07	1:46



CATEGORY	A	B	C	D
S-ILS 34R	4425/18 200 (200-½)			
S-LOC 34R	4700/24	475 (500-½)	4700/50	475 (500-1)

SW-4, 22 FEB 2024 to 21 MAR 2024

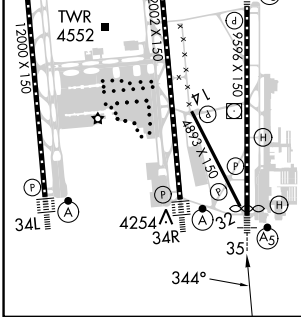
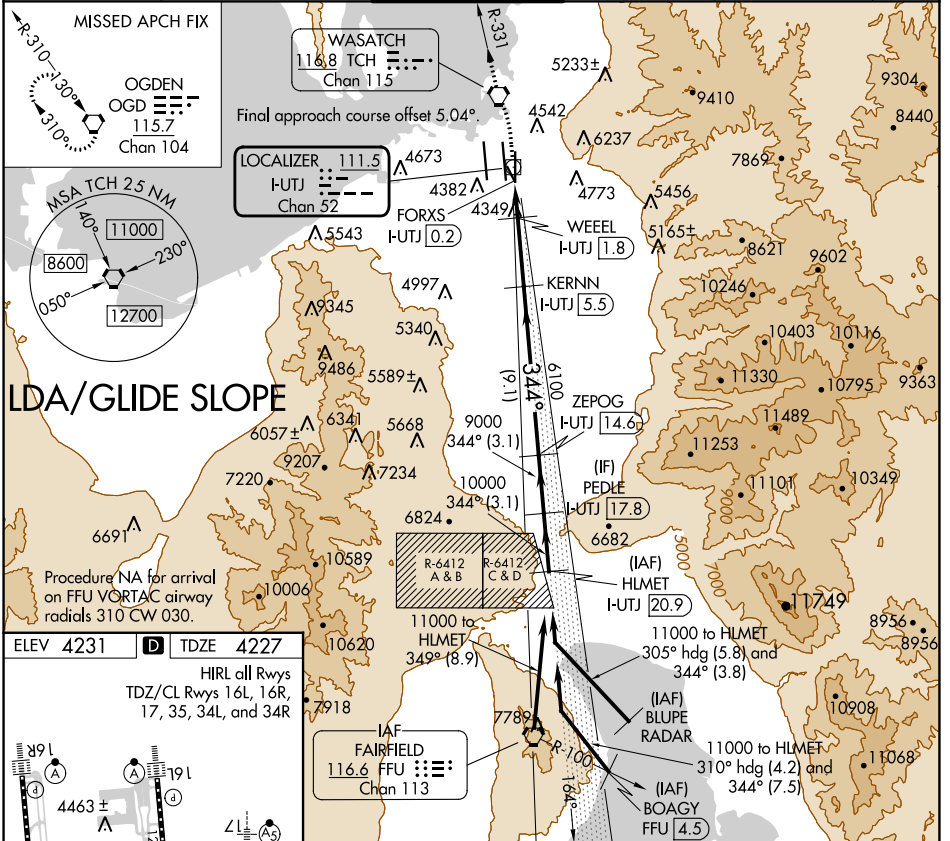
SW-4, 22 FEB 2024 to 21 MAR 2024

LOC/DME I-UTJ 111.5 Chan 52	APP CRS 344°	Rwy Idg 9272 TDZE 4227 Apt Elev 4231
---	------------------------	--

LDA RWY 35

SALT LAKE CITY INTL (SLC)

DME required.		MALSR 	MISSED APPROACH: Climb to 4800 then climbing left turn to 9000 direct TCH VORTAC and on TCH VORTAC R-331 to OGD VORTAC and hold.		
D-ATIS 124.75 125.625	SALT LAKE CITY APP CON 125.7 284.6	SALT LAKE CITY TOWER 118.3 257.8	GND CON 121.9 348.6	CLNC DEL 127.3 379.975	CPDLC



ELEV 4231	D	TDZE 4227	HIRL all Rwys TDZ/CL Rwys 16L, 16R, 17, 35, 34L, and 34R	
4800	9000	TCH	TCH R-331	OGD
VGS1 and LDA glidepath not coincident (VGS1 Angle 3.00/TCH 74).				
I-UTJ DME ANT. FORXS I-UTJ 0.2 WEEL I-UTJ 0.9 KERNN I-UTJ 5.5 ZEPOG I-UTJ 14.6 PEDLE I-UTJ 17.8 HLMET I-UTJ 20.9		11000 to HLMET 305° hdg (5.8) and 344° (3.8) 11000 to HLMET 310° hdg (4.2) and 344° (7.5)		
1.1 NM	0.9 NM	3.7 NM	9.1 NM	3.1 NM
CATEGORY	A	B	C	D
S-LDA/GS 35	4477/24 250 (300-½)			
S-LDA 35	4660/24	433 (500-½)	4660/40	433 (500-¾)

SW-4, 22 FEB 2024 to 21 MAR 2024

SW-4, 22 FEB 2024 to 21 MAR 2024

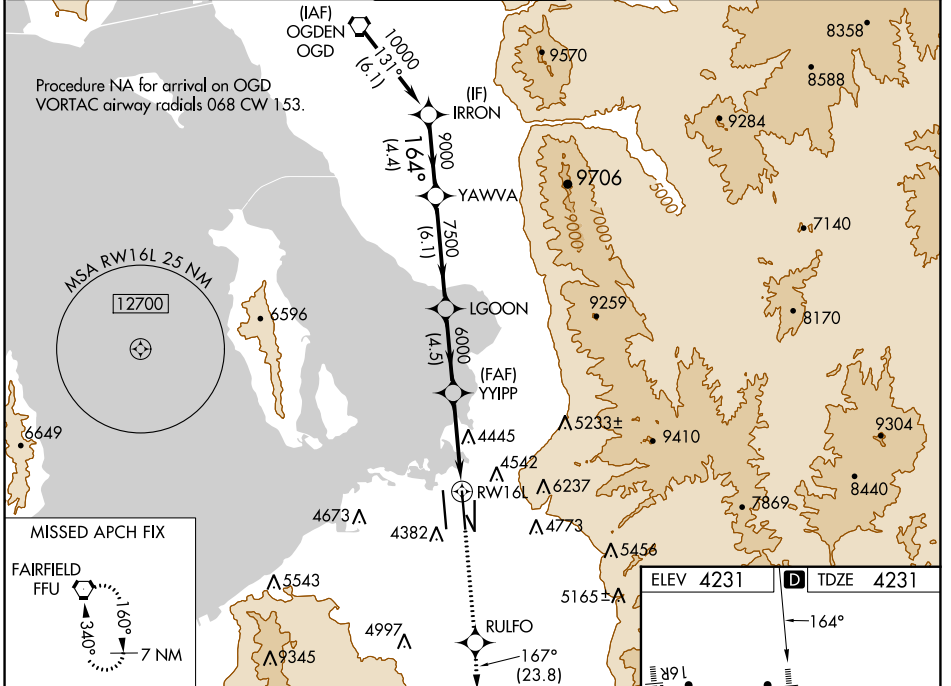
WAAS CH 70546 W16B	APP CRS 164°	Rwy Idg 12002 TDZE 4231 Apt Elev 4231
--	------------------------	--

RNAV (GPS) RWY 16L

SALT LAKE CITY INTL (SLC)

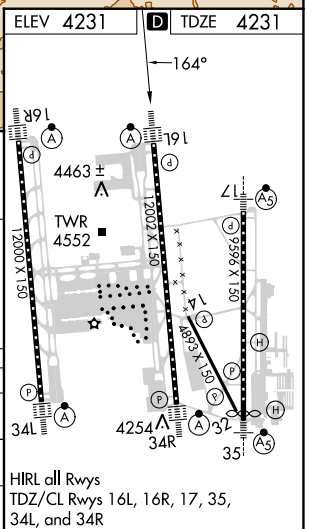
RNP APCH - GPS.		ALSF-2 	MISSED APPROACH: Climb to 10000 direct RULFO and on track 167° to FFU VORTAC and hold.
<p>▼ LNAV procedure NA during simultaneous operations. Simultaneous approach authorized. Use of FD or AP required during simultaneous operations. For uncompensated Baro-VNAV systems, LNAV/VNAV NA below -10°C or above 45°C. For inop ALS, increase LPV Cat E visibility to RVR 4000, increase LNAV/VNAV Cat A visibility to RVR 4500, increase Cats C/D visibility to RVR 5500, increase Cat E visibility to 6000, and increase LNAV Cat E visibility to 1½ SM.</p>			

D-ATIS 124.75 125.625	SALT LAKE CITY APP CON 125.7 284.6	SALT LAKE CITY TOWER 119.05 257.8	GND CON 123.775 348.6	CLNC DEL 127.3 379.975	CPDLC
---------------------------------	--	---	---------------------------------	----------------------------------	-------



VGSI and RNAV glidepath not coincident (VGSI Angle 3.00/TCH 70).

IRRON	YAWVA	LGOON	YYIPP	RULFO	FFU
10000	9000	7500	6000	4231	4231
GP 3.04° TCH 55		1.4 NM to RWY 16L		tr 167°	
4.4 NM		6.1 NM		3.9 NM	
CATEGORY	A	B	C	D	E
LPV DA	4431/18 200 (200-½)				
LNAV/VNAV DA	4537/24 306 (400-½)	4559/26 328 (400-½)	4574/30 343 (400-¾)	4593/35 362 (400-¾)	4634/40 403 (500-¾)
LNAV MDA	4760/24 529 (600-½)		4760/55 529 (600-1)		



SW-4, 22 FEB 2024 to 21 MAR 2024

SW-4, 22 FEB 2024 to 21 MAR 2024

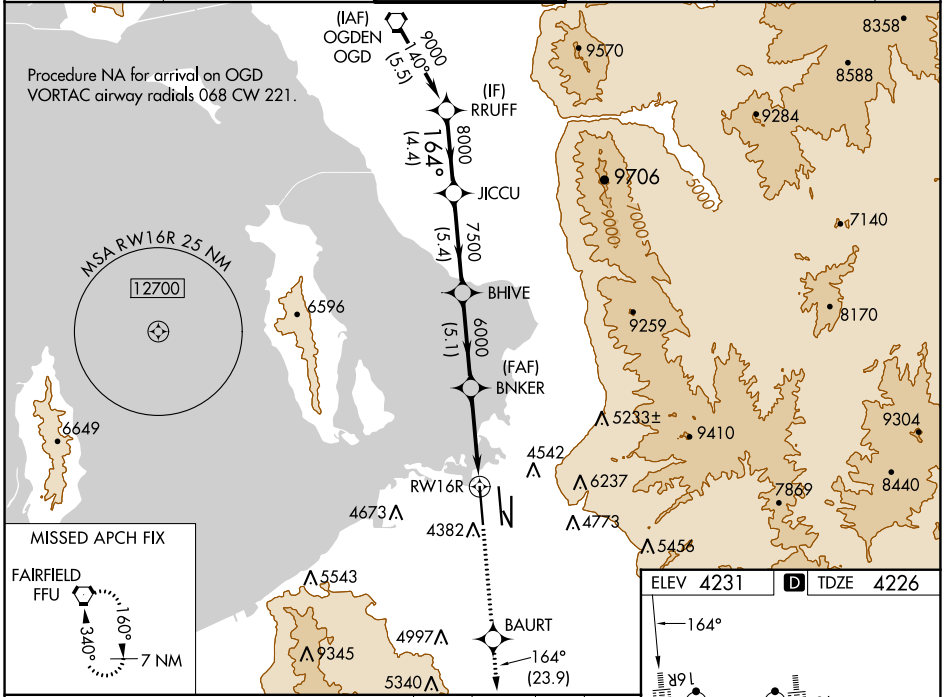
WAAS CH 42746 W16A	APP CRS 164°	Rwy Idg 12000 TDZE 4226 Apt Elev 4231
--	------------------------	--

RNAV (GPS) RWY 16R

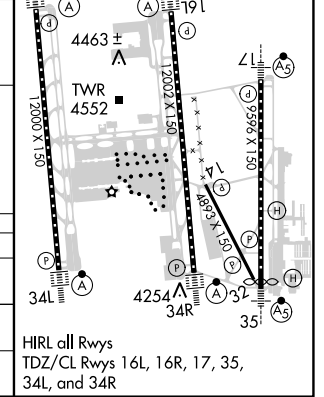
SALT LAKE CITY INTL (SLC)

RNP APCH - GPS. ⚠ Simultaneous approach authorized. LNAV procedure NA during simultaneous operations. Use of FD or AP required during simultaneous operations. For uncompensated Baro-VNAV systems, LNAV/VNAV NA below -10°C or above 46°C. For inop ALS, increase LPV Cat E visibility to RVR 4000, increase LNAV/VNAV Cat E visibility to RVR 6000, and increase LNAV Cat C/D/E visibility to 1½ SM.		ALSF-2 	MISSED APPROACH: Climb to 10000 direct BAURT and on track 164° to FFU VORTAC and hold.
--	--	------------	--

D-ATIS 124.75 125.625	SALT LAKE CITY APP CON 125.7 284.6	SALT LAKE CITY TOWER 132.65 336.4	GND CON 123.775 348.6	CLNC DEL 127.3 379.975	CPDLC
---------------------------------	--	---	---------------------------------	----------------------------------	-------



VGSI and RNAV glidepath not coincident (VGSI Angle 3.00/TCH 73). GP 3.04° TCH 52					
RRUFF	JICCU	BHIVE	BNKER	BAURT	FFU
9000	8000	7500	6000	10000	4226
4.4 NM		5.4 NM		4 NM	
A		B		E	
LPV DA	4426/18		200 (200-½)		
LNAV/VNAV DA	4620/35		394 (400-¾)		
LNAV MDA	4740/24		4740/55		
	514 (600-½)		514 (600-1)		



SW-4, 22 FEB 2024 to 21 MAR 2024

SW-4, 22 FEB 2024 to 21 MAR 2024

WAAS CH 82338 W17A	APP CRS 169°	Rwy Idg TDZE Apt Elev	9596 4219 4227
--	------------------------	-----------------------------	---

RNAV (GPS) RWY 17

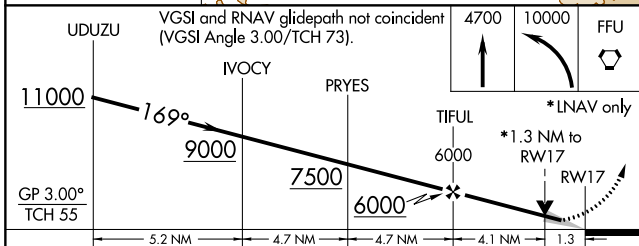
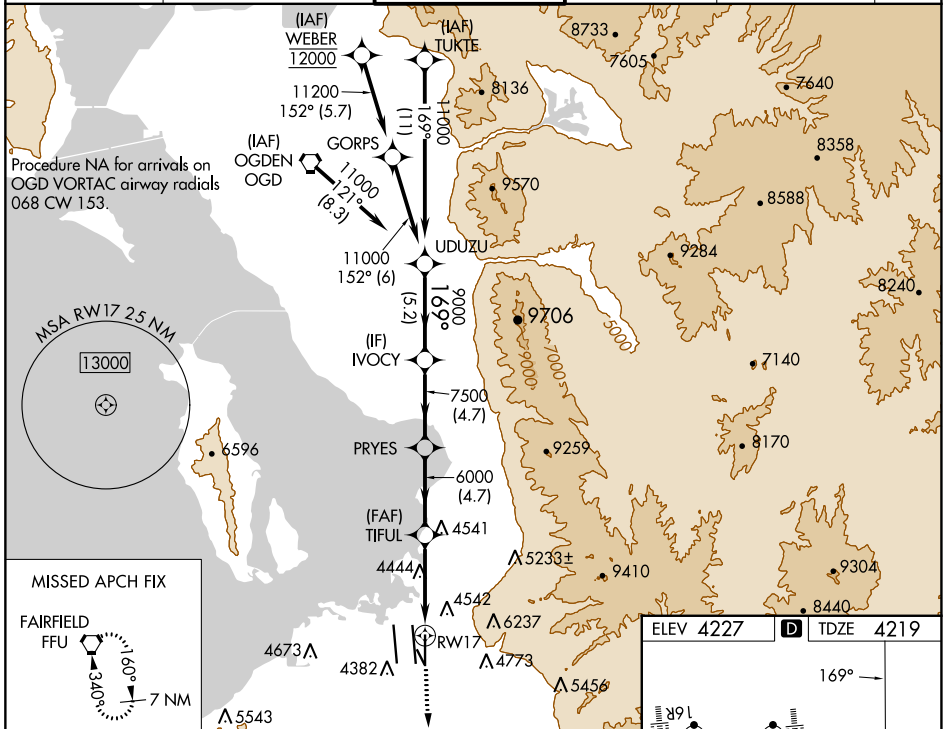
SALT LAKE CITY INTL (SLC)

▼ For uncompensated Baro-VNAV systems, LNAV/VNAV NA below -14°C (7°F) or above 49°C (121°F). DME/DME RNP-0.3 NA. For inop ALS, increase LPV Cat E visibility to RVR 4000, LNAV/VNAV Cat E visibility to RVR 6000, and LNAV Cat C/D/E visibility to 1½ SM. Simultaneous approach authorized. LNAV procedure NA during simultaneous operations. Use of FD or AP providing RNAV track guidance required during simultaneous operations.

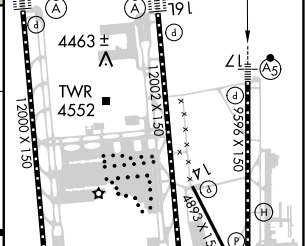


MISSED APPROACH:
Climb to 4700 then climbing left turn to 10000 direct FFU VORTAC and hold.

D-ATIS 124.75 125.625	SALT LAKE CITY APP CON 125.7 284.6	SALT LAKE CITY TOWER 118.3 257.8	GND CON 121.9 348.6	CLNC DEL 127.3 379.975	CPDLC
---------------------------------	--	--	-------------------------------	----------------------------------	-------



ELEV 4227	D TDZE 4219
-----------	--------------------



CATEGORY	A	B	C	D	E
LPV DA		4419/18	200 (200-½)		
LNAV/VNAV DA		4571/30	352 (400-¾)		
LNAV MDA	4700/24	481 (500-½)		4700/50	481 (500-1)

HIRL all Rws
TDZ/CL Rws 16L, 16R, 17, 35, 34L, and 34R

SW-4, 22 FEB 2024 to 21 MAR 2024

SW-4, 22 FEB 2024 to 21 MAR 2024

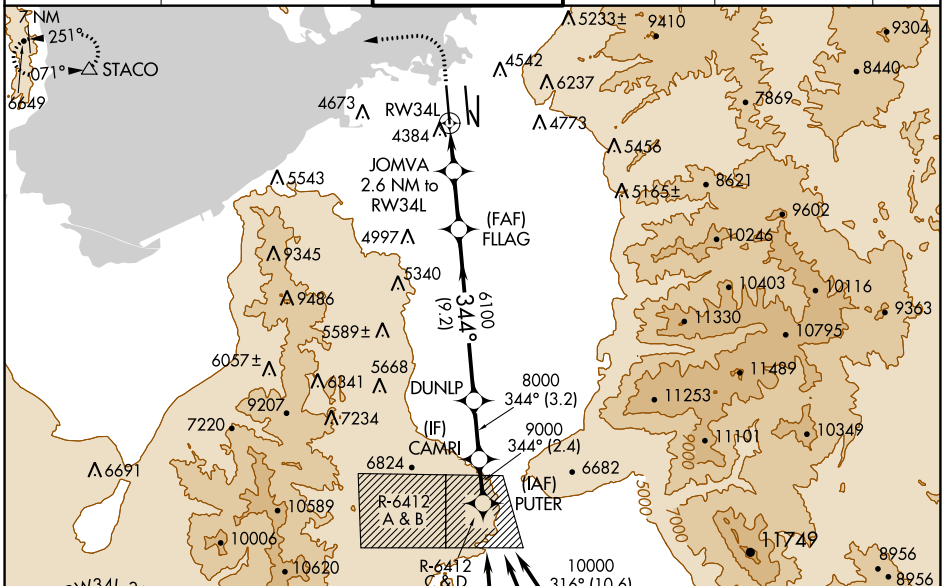
WAAS CH 70432 W34B	APP CRS 344°	Rwy Idg TDZE Apt Elev	12000 4229 4231
--	------------------------	-----------------------------	--

RNAV (GPS) RWY 34L

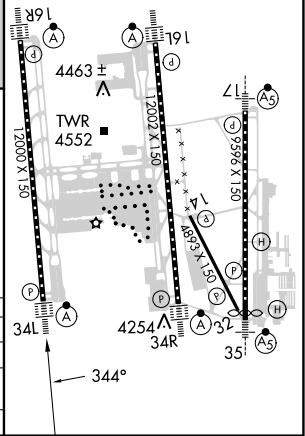
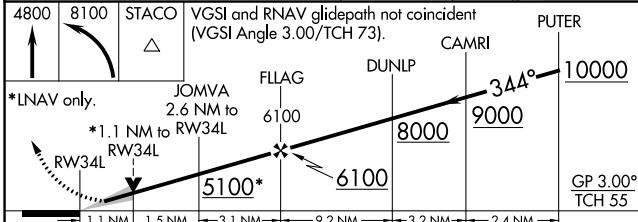
SALT LAKE CITY INTL (SLC)

RNP APCH.	ALSF-2	MISSED APPROACH: Climb to 4800 then climbing left turn to 8100 direct STACO and hold.
<p>Simultaneous approach authorized. Use of FD or AP providing RNAV track guidance required during simultaneous operations. LNAV procedure NA during simultaneous operations. For uncompensated Baro-VNAV systems, LNAV/VNAV NA below -15°C or above 49°C. For inop ALS, increase LPV Cat E visibility to RVR 4000, LNAV/VNAV all Cats visibility to RVR 6000, LNAV Cat E visibility to 1½ SM.</p>		

D-ATIS 124.75 125.625	SALT LAKE CITY APP CON 125.7 284.6	SALT LAKE CITY TOWER 132.65 336.4	GND CON 123.775 348.6	CLNC DEL 127.3 379.975	CPDLC
---------------------------------	--	---	---------------------------------	----------------------------------	-------



ELEV 4231	TDZE 4229
HIRL all Rwy's TDZ/CL Rwy's 16L, 16R, 17, 35, 34L, and 34R	



CATEGORY	A	B	C	D	E
LPV DA		4429/18	200 (200-½)		
LNAV/VNAV DA		4640/40	411 (500-¾)		
LNAV MDA	4660/24	431 (500-½)	4660/40	431 (500-¾)	

SW-4, 22 FEB 2024 to 21 MAR 2024

SW-4, 22 FEB 2024 to 21 MAR 2024

WAAS CH 49230 W34A	APP CRS 344°	Rwy ldg 12002 TDZE 4222 Apt Elev 4227
--	------------------------	--

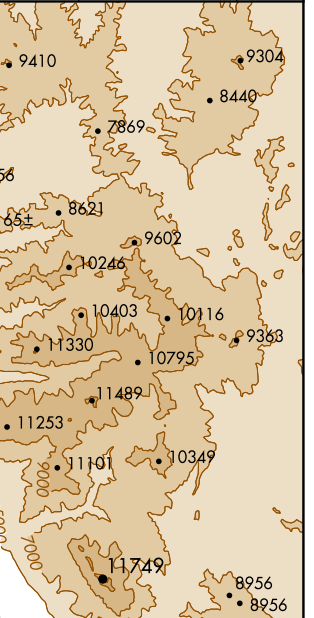
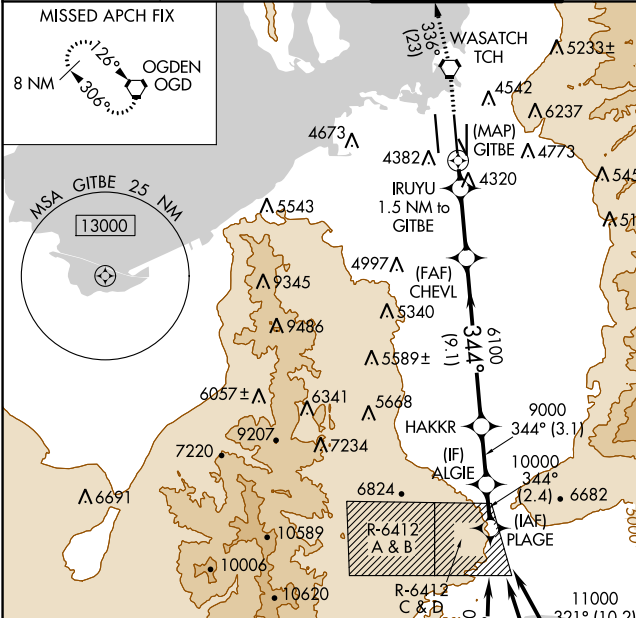
RNAV (GPS) RWY 34R

SALT LAKE CITY INTL (SLC)

V Simultaneous approach authorized. DME/DME RNP-0.3 NA. Use of FD or AP providing RNAV track guidance required during simultaneous operations. LNAV procedure NA during simultaneous operations. For uncompensated Baro-VNAV systems, LNAV/VNAV NA below -17°C (1°F) or above 49°C (121°F). For inop ALS, increase LPV Cat E visibility to ¾, LNAV/VNAV Cat E visibility to ¾ and LNAV Cate C/D/E to 1½ SM.

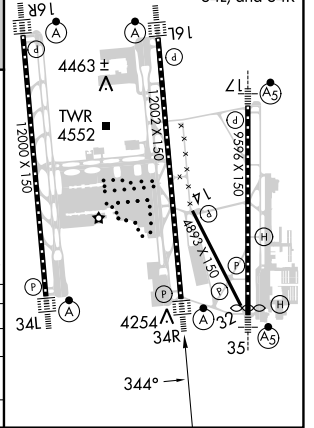
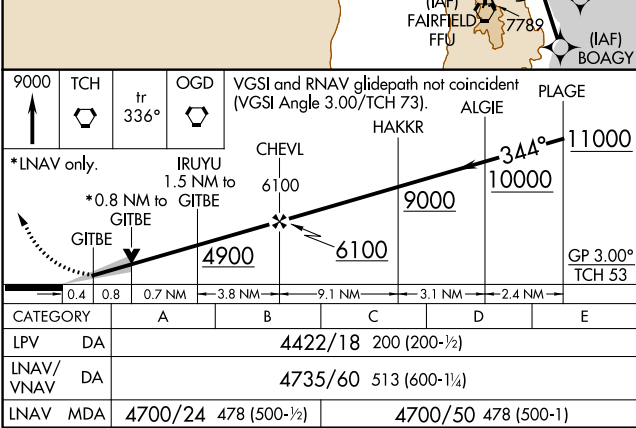
ALSF-2
MISSED APPROACH: Climb to 9000 direct TCH VORTAC and on track 336° to OGD VORTAC and hold.

D-ATIS 124.75 125.625	SALT LAKE CITY APP CON 125.7 284.6	SALT LAKE CITY TOWER 119.05 257.8	GND CON 123.775 348.6	CLNC DEL 127.3 379.975	CPDLC
---------------------------------	--	---	---------------------------------	----------------------------------	-------



9000	TCH	OGD	VGSI and RNAV glidepath not coincident (VGSI Angle 3.00/TCH 73).
↑	tr 336°		ALGIE PLAGE

ELEV 4227	TDZE 4222
HIRL all Rwy's TDZ/CL Rwy's 16L, 16R, 17, 35, 34L, and 34R	



SALT LAKE CITY, UTAH
Amdt 1C 07DEC17

40°47'N-111°59'W

SALT LAKE CITY INTL (SLC)

RNAV (GPS) RWY 34R

SW-4, 22 FEB 2024 to 21 MAR 2024

SW-4, 22 FEB 2024 to 21 MAR 2024

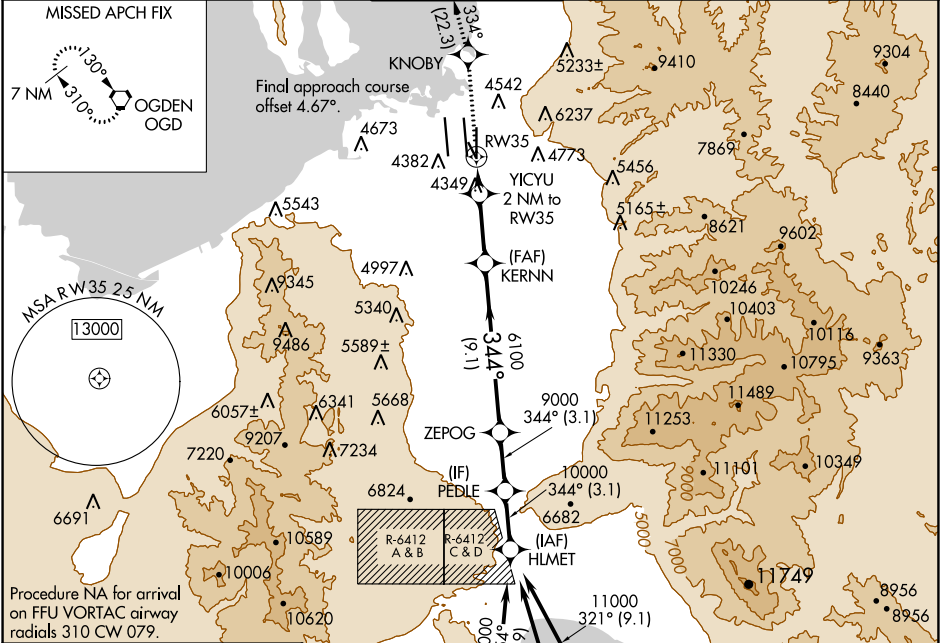
WAAS CH 42843 W35A	APP CRS 344°	Rwy Idg TDZE Apt Elev	9272 4227 4231
--	------------------------	-----------------------------	---

RNAV (GPS) RWY 35

SALT LAKE CITY INTL (SLC)

RNP APCH - GPS.	MALS/R	MISSED APPROACH: Climb to 9000 direct KNOBY and on track 334° to OGD VORTAC and hold.
▼ For inop ALS, increase LP Cat C, D and E visibility to RVR 5500, increase LNAV Cat E visibility to 1½ SM.		

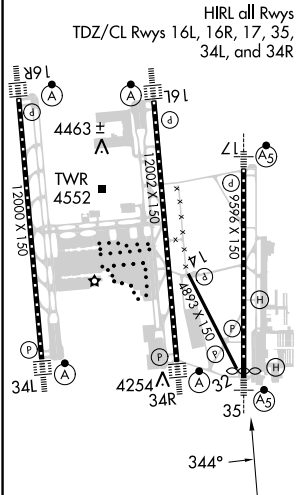
D-ATIS 124.75 125.625	SALT LAKE CITY APP CON 125.7 284.6	SALT LAKE CITY TOWER 118.3 257.8	GND CON 121.9 348.6	CLNC DEL 127.3 379.975	CPDLC
---------------------------------	--	--	-------------------------------	----------------------------------	-------



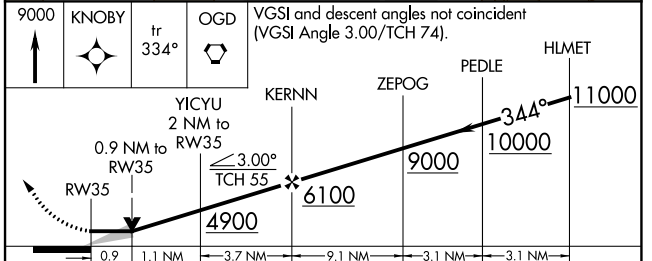
SW-4, 22 FEB 2024 to 21 MAR 2024

SW-4, 22 FEB 2024 to 21 MAR 2024

ELEV 4231	D	TDZE 4227
------------------	----------	------------------



9000	KNOBY	tr	OGD	VGSI and descent angles not coincident (VGSI Angle 3.00/TCH 74).
	334°			



CATEGORY	A	B	C	D	E
LP MDA	4600/24	373 (400-½)	4600/35	373 (400-½)	
LNAV MDA	4760/24	533 (600-½)	4760/55	533 (600-1)	