

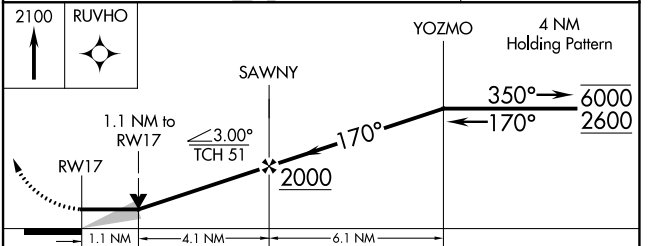
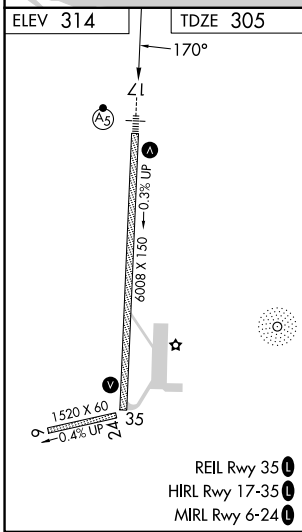
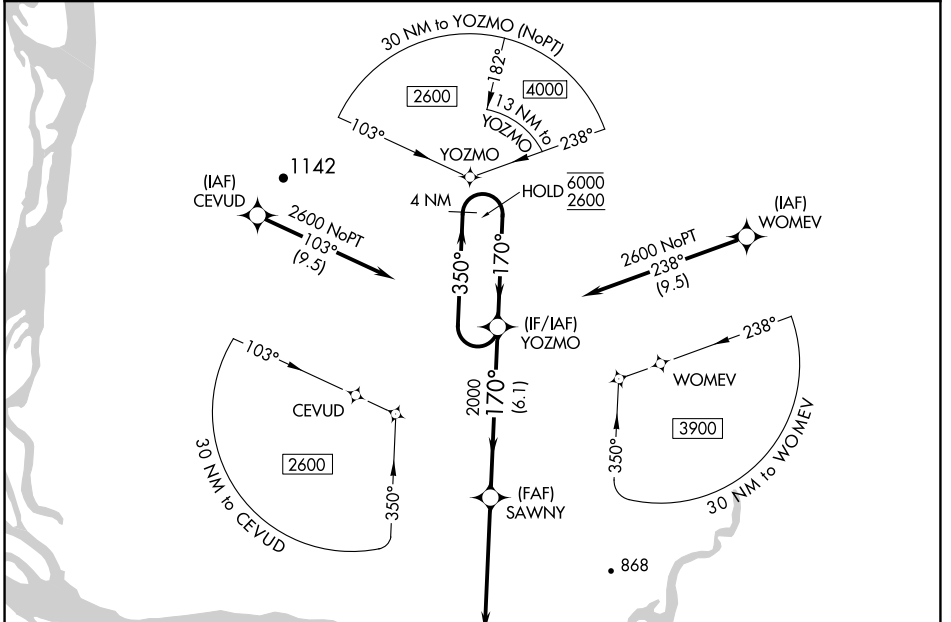
APP CRS	Rwy Idg	<b>6008</b>
<b>170°</b>	TDZE	<b>305</b>
	Apt Elev	<b>314</b>

# RNAV (GPS) RWY 17

ST MARY'S (KSM)(PASM)

RNP APCH-GPS.	MALSR	MISSED APPROACH: Climb to 2100 direct RUVHO and hold.
<p>Circling to Rwy 6 NA at night. Circling NA east of Rwy 17-35. Inop table does not apply.</p>		

AWOS-3P <b>128.7</b>	ANCHORAGE CENTER <b>124.0</b>	CTAF <b>122.3</b>
-------------------------	----------------------------------	----------------------



CATEGORY	A	B	C	D
LNAV MDA	700-1	395 (400-1)	700-1½	395 (400-1½)
<input checked="" type="checkbox"/> CIRCLING	820-1	506 (600-1)	820-1½	880-2
			506 (600-1½)	566 (600-2)

AK, 25 JAN 2024 to 21 MAR 2024

AK, 25 JAN 2024 to 21 MAR 2024