

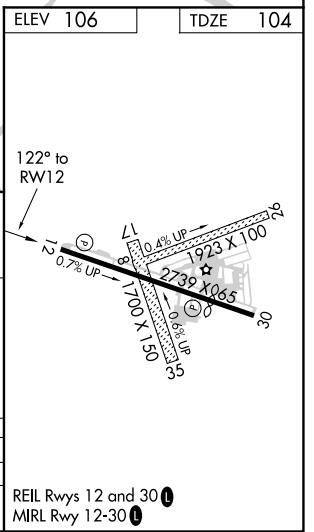
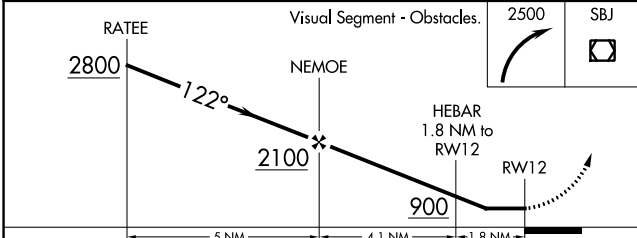
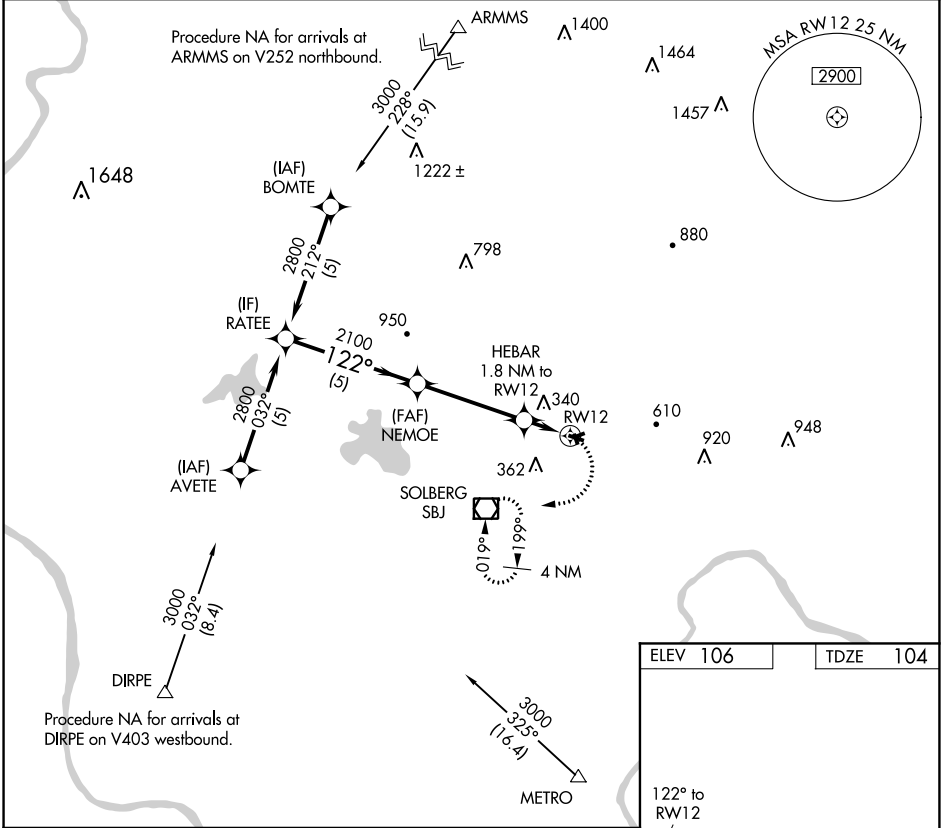
APP CRS 122°	Rwy Idg TDZE Apt Elev	2739 104 106
------------------------	-----------------------------	---

RNAV (GPS) RWY 12

SOMERSET (SMQ)

RNP APCH.	MISSED APPROACH: Climbing right turn to 2500 direct SBJ VOR/DME and hold, continue climb in hold to 2500
Procedure NA at night. Rwy 12 helicopter visibility reduction below 1 SM NA.	

ASOS 120.6	NEW YORK APP CON 132.8 379.9	UNICOM 123.0 (CTAF)	118.325
----------------------	--	-------------------------------	----------------



CATEGORY	A	B	C	D
LN AV MDA	640-1	536 (600-1)		NA
CIRCLING	640-1 534 (600-1)	960-1¼ 854 (900-1¼)		NA

NE-2, 17 JUN 2021 to 15 JUL 2021

NE-2, 17 JUN 2021 to 15 JUL 2021

VOR/DME SBJ 112.9 Chan 76	APP CRS 061°	Rwy Idg 1923 TDZE 101 Apt Elev 106
---	------------------------	---

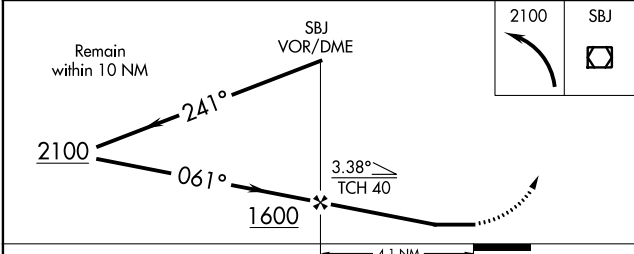
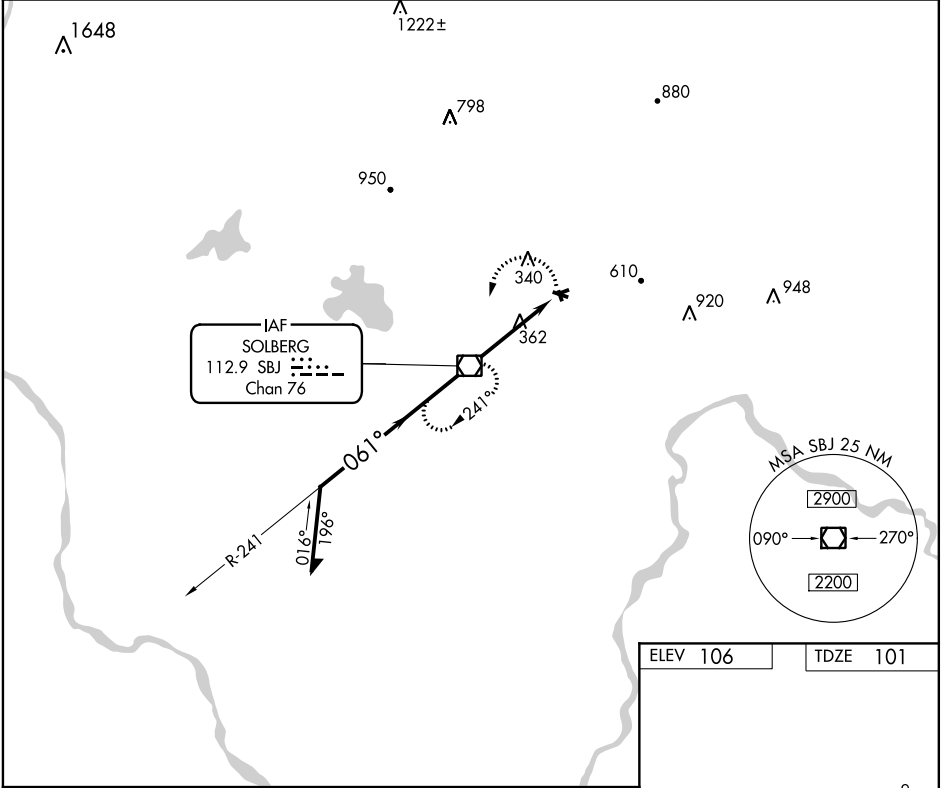
VOR RWY 8

SOMERSET (SMQ)

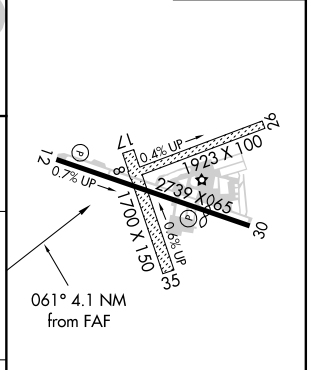
▼ Helicopter visibility reduction below 1 SM NA. Procedure NA at night.
▲ When local altimeter setting not received, use Morristown altimeter setting and increase all MDA 60 feet.

MISSED APPROACH: Climbing left turn to 2100 direct SBJ VOR/DME and hold.

ASOS 120.6	NEW YORK APP CON 132.8 379.9	UNICOM 123.0 (CTAF)	118.325 0
----------------------	--	-------------------------------	------------------



ELEV 106	TDZE 101
----------	----------



CATEGORY	A	B	C	D
S-8	700-1	599 (600-1)		NA
C CIRCLING	700-1 594 (600-1)	960-1¼ 854 (900-1¼)		NA

REIL Rwys 12 and 30 **0**
 MIRL Rwy 12-30 **0**

FAF to MAP 4.1 NM

Knots	60	90	120	150	180
Min:Sec	4:06	2:44	2:03	1:38	1:22

NE-2, 17 JUN 2021 to 15 JUL 2021

NE-2, 17 JUN 2021 to 15 JUL 2021