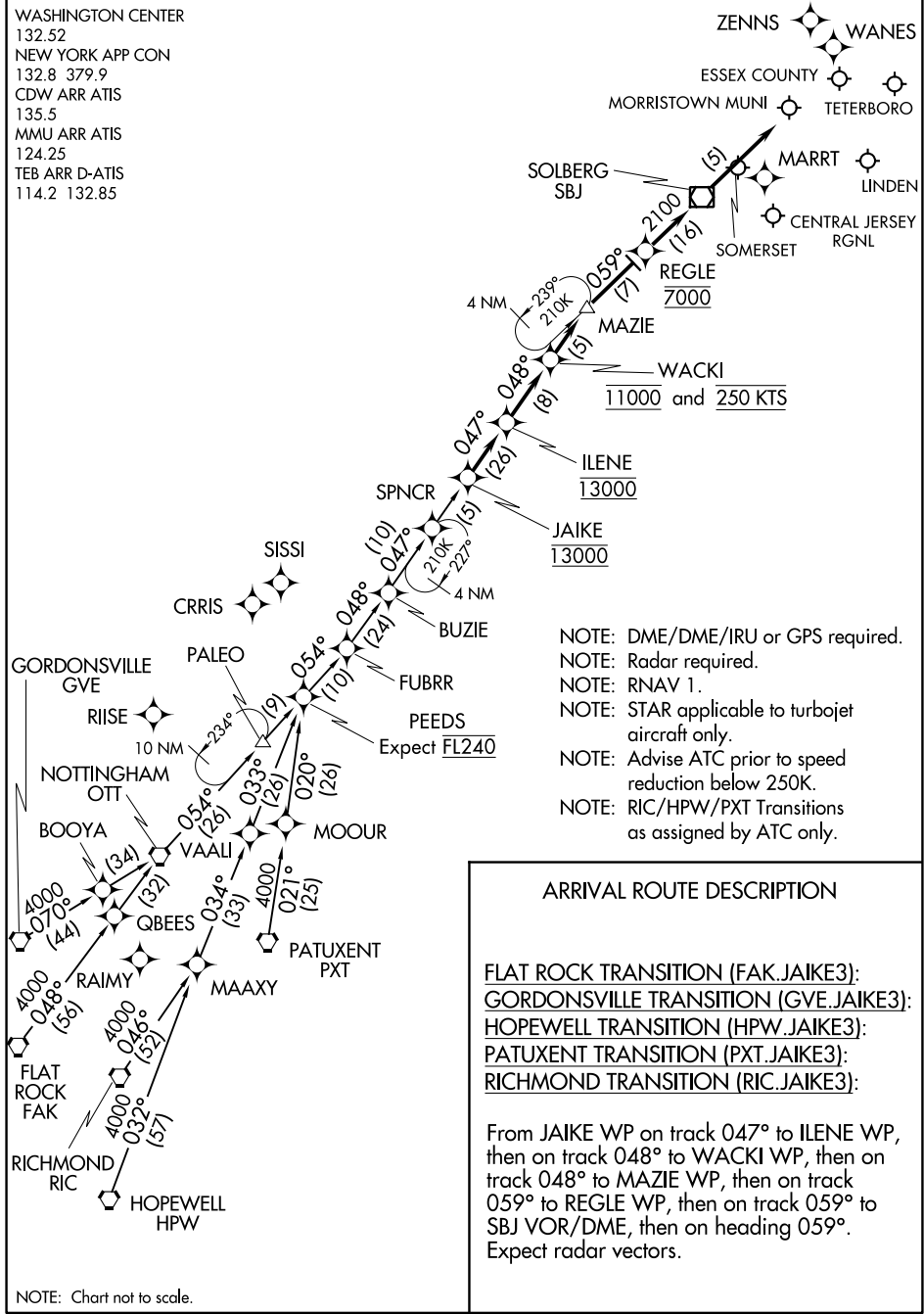


# JAIKE THREE ARRIVAL (RNAV)

TETERBORO, NEW JERSEY

WASHINGTON CENTER  
 132.52  
 NEW YORK APP CON  
 132.8 379.9  
 CDW ARR ATIS  
 135.5  
 MMU ARR ATIS  
 124.25  
 TEB ARR D-ATIS  
 114.2 132.85



- NOTE: DME/DME/IRU or GPS required.
- NOTE: Radar required.
- NOTE: RNAV 1.
- NOTE: STAR applicable to turbojet aircraft only.
- NOTE: Advise ATC prior to speed reduction below 250K.
- NOTE: RIC/HPW/PXT Transitions as assigned by ATC only.

## ARRIVAL ROUTE DESCRIPTION

- FLAT ROCK TRANSITION (FAK.JAIKE3):
- GORDONSVILLE TRANSITION (GVE.JAIKE3):
- HOPEWELL TRANSITION (HPW.JAIKE3):
- PATUXENT TRANSITION (PXT.JAIKE3):
- RICHMOND TRANSITION (RIC.JAIKE3):

From JAIKE WP on track 047° to ILENE WP, then on track 048° to WACKI WP, then on track 048° to MAZIE WP, then on track 059° to REGLE WP, then on track 059° to SBJ VOR/DME, then on heading 059°. Expect radar vectors.

NOTE: Chart not to scale.

# JAIKE THREE ARRIVAL (RNAV)

TETERBORO, NEW JERSEY

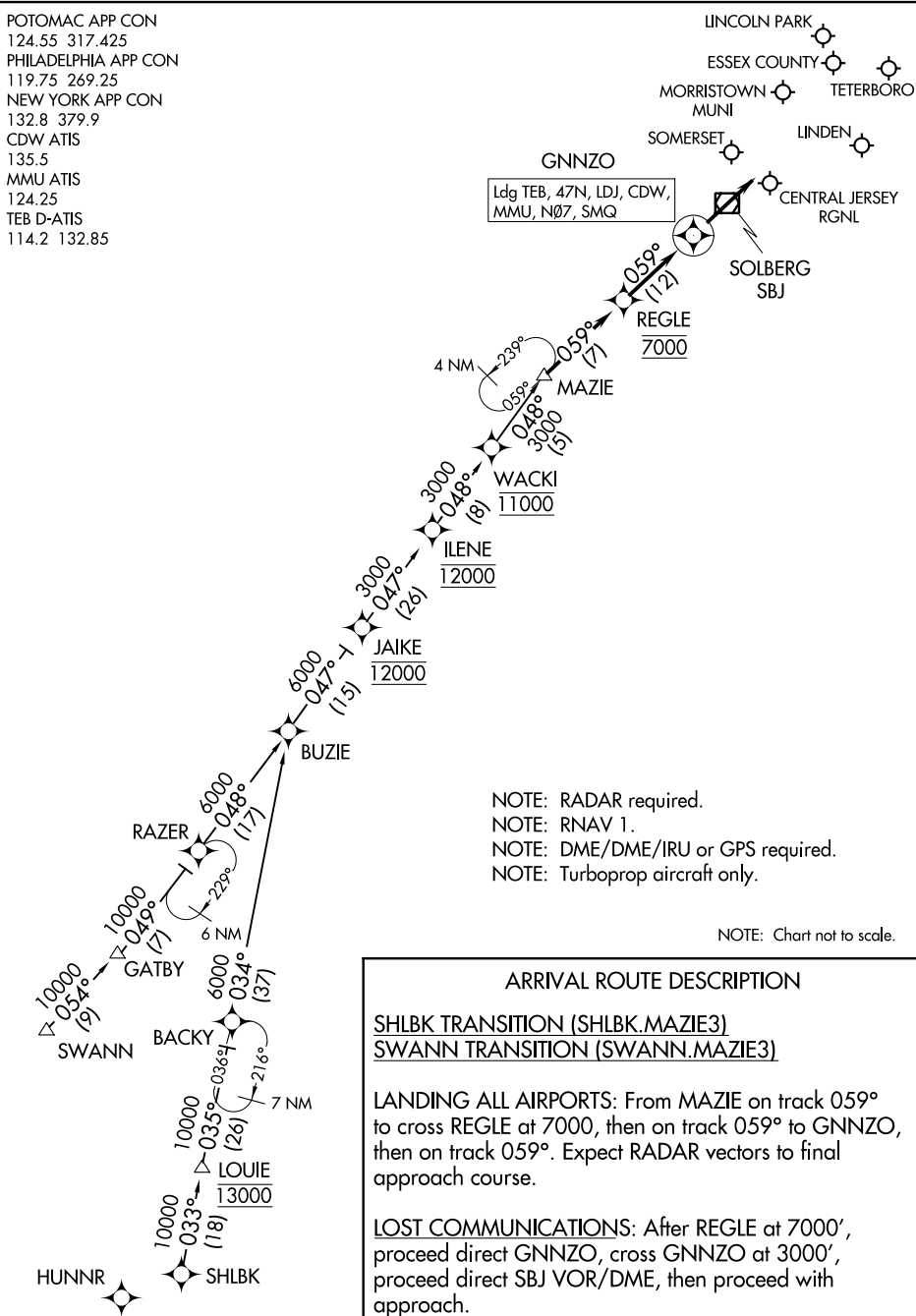
NE-2, 17 JUN 2021 to 15 JUL 2021

NE-2, 17 JUN 2021 to 15 JUL 2021

# MAZIE THREE ARRIVAL (RNAV)

TETERBORO, NEW JERSEY

POTOMAC APP CON  
 124.55 317.425  
 PHILADELPHIA APP CON  
 119.75 269.25  
 NEW YORK APP CON  
 132.8 379.9  
 CDW ATIS  
 135.5  
 MMU ATIS  
 124.25  
 TEB D-ATIS  
 114.2 132.85



NOTE: RADAR required.  
 NOTE: RNAV 1.  
 NOTE: DME/DME/IRU or GPS required.  
 NOTE: Turboprop aircraft only.

NOTE: Chart not to scale.

### ARRIVAL ROUTE DESCRIPTION

SHLBK TRANSITION (SHLBK.MAZIE3)  
SWANN TRANSITION (SWANN.MAZIE3)

**LANDING ALL AIRPORTS:** From MAZIE on track 059° to cross REGLE at 7000, then on track 059° to GNNZO, then on track 059°. Expect RADAR vectors to final approach course.

**LOST COMMUNICATIONS:** After REGLE at 7000', proceed direct GNNZO, cross GNNZO at 3000', proceed direct SBJ VOR/DME, then proceed with approach.

NE-2, 17 JUN 2021 to 15 JUL 2021

NE-2, 17 JUN 2021 to 15 JUL 2021

# MAZIE THREE ARRIVAL (RNAV)

TETERBORO, NEW JERSEY

NEW YORK APP CON  
 127.6 379.9  
 EWR D-ATIS  
 115.7 134.825

JAMESTOWN  
 114.7 JHW |||||  
 Chan 94  
 N42°11.32'-W79°07.28'  
 L-30, H-10

ELMIRA  
 109.65 ULW |||||  
 Chan 33 (Y)

DMACK  
 N41°47.15'  
 W77°33.12'

WILKES-BARRE  
 111.6 LVZ |||||  
 Chan 53  
 N41°16.37'-W75°41.37'  
 Expect FL180

HUGUENOT  
 116.1 HUO |||||  
 Chan 108

HOXIE  
 N41°51.90'  
 W77°51.16'

SPARTA  
 115.7 SAX |||||  
 Chan 104

SLATE RUN  
 113.9 SLT |||||  
 Chan 86

STENT  
 N41°40.74'  
 W77°09.17'

STILLWATER  
 109.6 STW |||||  
 Chan 33  
 N40°59.75'-W74°52.14'

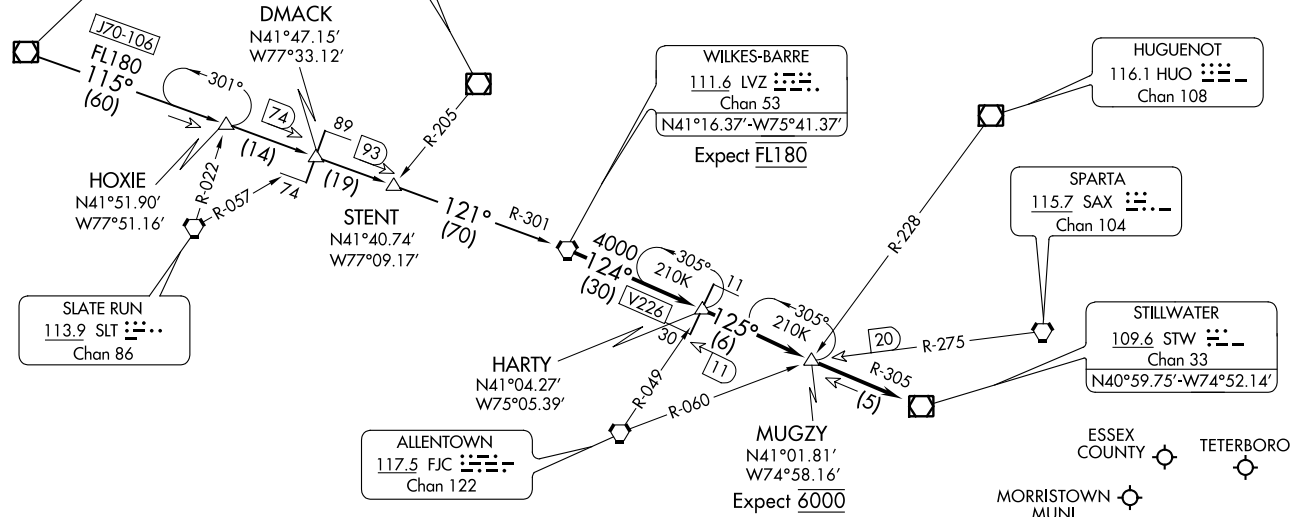
HARTY  
 N41°04.27'  
 W75°05.39'

ALLENTOWN  
 117.5 FJC |||||  
 Chan 122

MUGZY  
 N41°01.81'  
 W74°58.16'  
 Expect 6000



NOTE: This STAR applicable to all aircraft capable of 250 KIAS or greater landing at Teterboro, Morristown Muni, Essex County, Princeton, Solberg-Hunterdon, Linden, and Somerset.  
 NOTE: Advise ATC prior to speed reduction below 250 Knots.



**JAMESTOWN TRANSITION (JHW.LVZ4):** From over JHW VOR/DME on JHW R-115 and LVZ R-301 to LVZ VORTAC. Thence . . . .  
 . . . . from over LVZ VORTAC, on LVZ R-124 and STW R-305 to STW VOR/DME. Expect radar vectors to final approach course.

NOTE: Chart not to scale.