

LOC I-DSY 110.1 Chan 38	APP CRS 011°	Rwy Idg TDZE 253 Apt Elev 264
--------------------------------------	------------------------	---

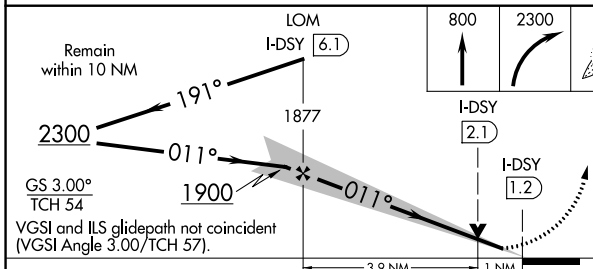
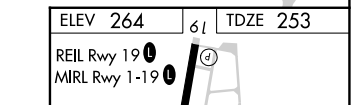
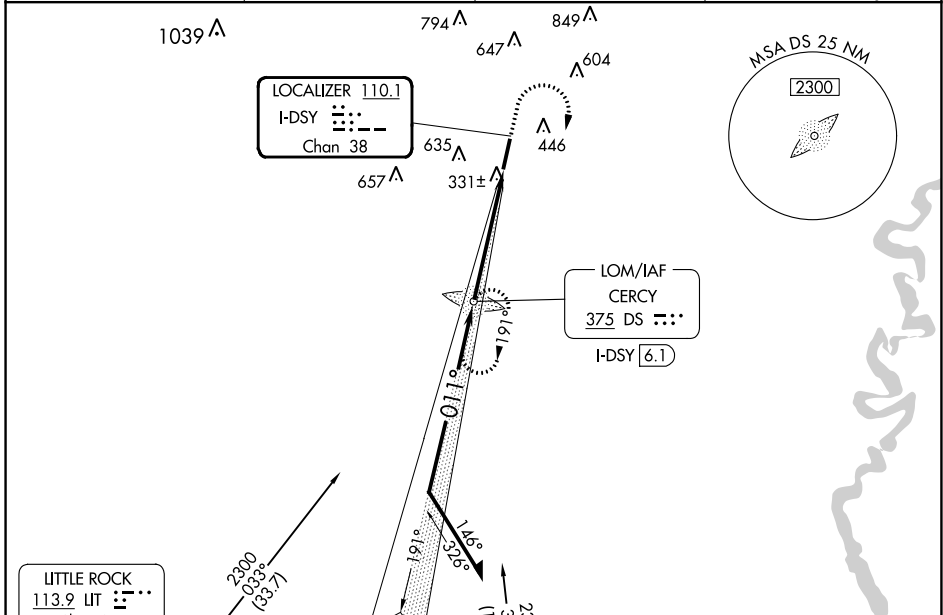
ILS or LOC RWY 1

SEARCY MUNI (SRC)

NA Circling NA for Cats B and C west of Rwy 1-19. When local altimeter setting not received, use Bill and Hillary Clinton Nil/Adams Fld altimeter setting: increase DA to 542 feet; increase all MDAs 100 feet and increase S-LOC 1 and Circling Cat C visibility ¼ SM. VDP NA with Bill and Hillary Clinton Nil/Adams Fld altimeter setting. ADF required.

MALSR
MISSED APPROACH: Climb to 800 then climbing right turn to 2300 direct CERCY LOM and hold.

AWOS-3PT 128.325	LITTLE ROCK APP CON 119.75 291.775	CLNC DEL 119.75	UNICOM 122.7 (CTAF)
----------------------------	--	---------------------------	-------------------------------



CATEGORY	A	B	C	D
S-ILS 1	453-½	200 (200-½)		NA
S-LOC 1	600-½	347 (400-½)		NA
CIRCLING	760-1	496 (500-1)	780-1½ 515 (600-1½)	NA

ELEV 264	61	TDZE 253			
REIL Rwy 19					
MRL Rwy 1-19					
FAF to MAP 4.9 NM					
Knots	60	90	120	150	180
Min:Sec	4:54	3:16	2:27	1:58	1:38

SC-1, 22 FEB 2024 to 21 MAR 2024


SC-1, 22 FEB 2024 to 21 MAR 2024

WAAS CH 81824 W01A	APP CRS 011°	Rwy Idg TDZE 253 Apt Elev 265	6008
--	------------------------	---	-------------

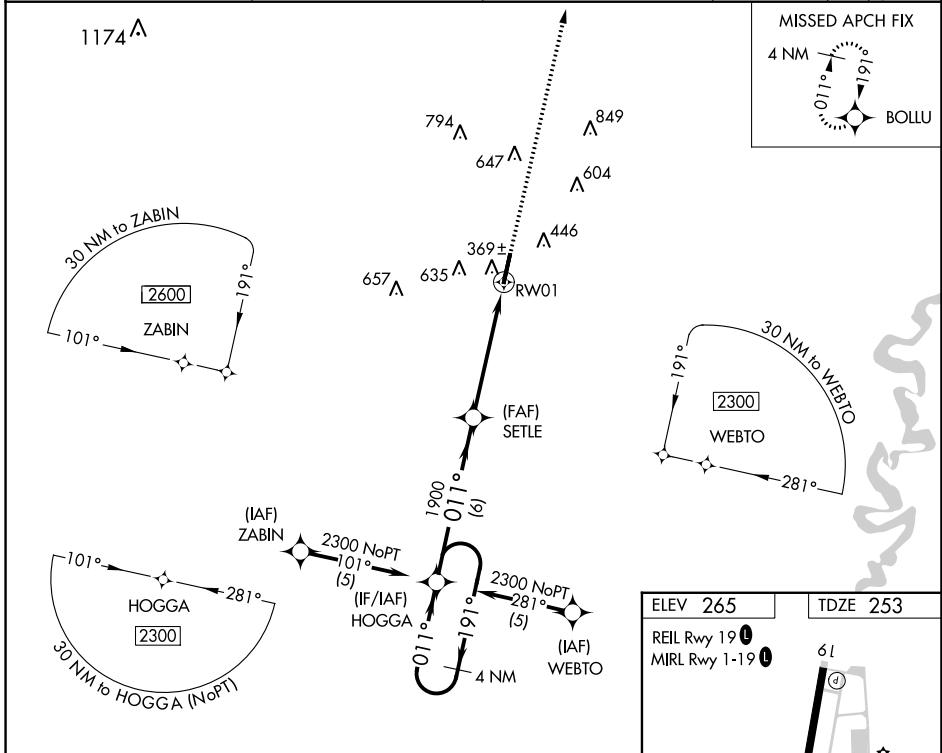
RNAV (GPS) RWY 1

SEARCY MUNI (SRC)

⚠ Circling NA for Cats B and C west of Rwy 1-19. DME/DME RNP-0.3 NA. VDP NA with Bill and Hillary Clinton Ntl/Adams Fld altimeter setting. When local altimeter setting not received, use Bill and Hillary Clinton Ntl/Adams Fld altimeter setting: increase LPV DA to 662 feet and all Cats visibility 1/4 SM; increase all MDAs 100 feet and LNAV and Circling Cat C visibility 1/4 SM. For inop ALS, increase LPV visibility to 7/8 SM. For inop ALS, when using Bill and Hillary Clinton Ntl/Adams Fld altimeter setting, increase LPV all Cats visibility to 1/8 SM.

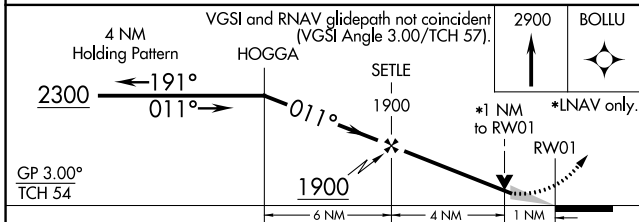
MALSR
 **MISSED APPROACH:**
 Climb to 2900 direct BOLLU and hold.

AWOS-3PT 128.325	LITTLE ROCK APP CON 119.75 291.775	CLNC DEL 119.75	UNICOM 122.7 (CTAF) ⓪
----------------------------	--	---------------------------	--

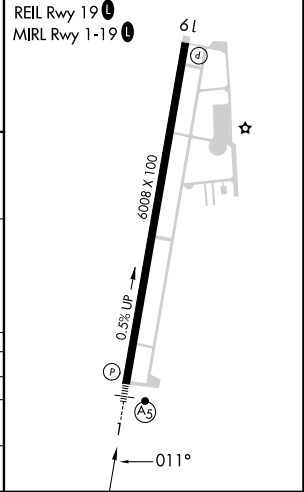


SC-1, 22 FEB 2024 to 21 MAR 2024

SC-1, 22 FEB 2024 to 21 MAR 2024



ELEV 265	TDZE 253
----------	----------



CATEGORY	A	B	C	D
LPV DA	573-1/2	320 (400-1/2)		NA
LNAV MDA	620-1/2	367 (400-1/2)	620-5/8 367 (400-5/8)	NA
CIRCLING	760-1	495 (500-1)	780-1/2 515 (600-1/2)	NA

WAAS CH 86224 W19A	APP CRS 191°	Rwy Idg TDZE 264 Apt Elev 264	6008
--	------------------------	---	-------------

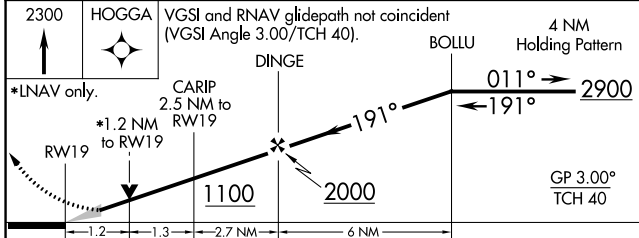
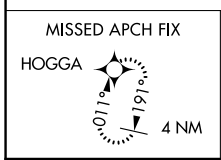
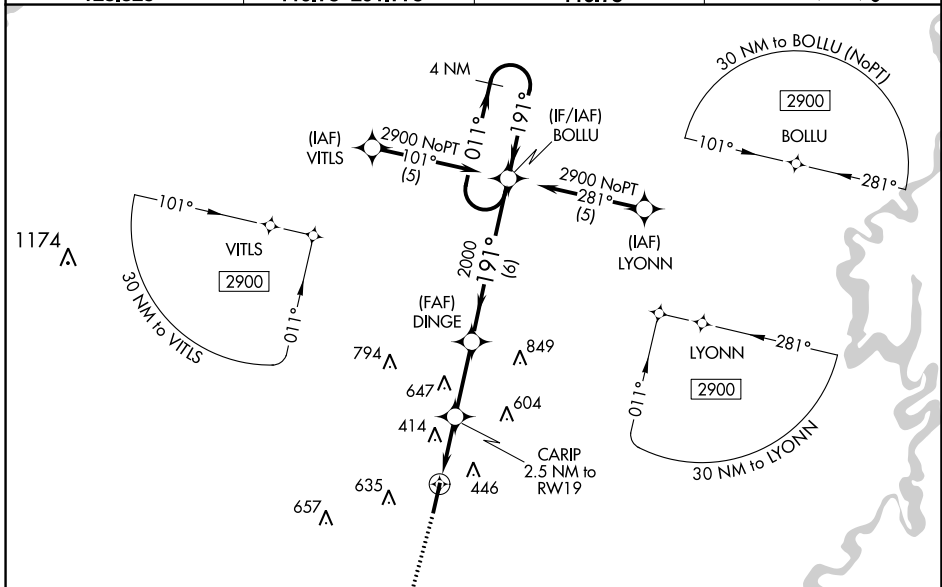
RNAV (GPS) RWY 19

SEARCY MUNI (SRC)

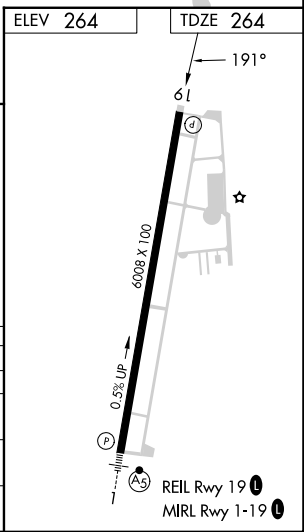
⚠ DME/DME RNP-0.3 NA. When local altimeter setting not received, use **Bill and Hillary Clinton Nil/Adams** Fld altimeter setting: increase LPV DA to 602 feet; increase all MDAs 100 feet and LNAV and Circling Cat C visibility ¼ SM. VDP NA with Bill and Hillary Clinton Nil/Adams Fld altimeter setting. Circling NA for Cats B and C west of Rwy 1-19.

MISSED APPROACH: Climb to 2300 direct HOGGA and hold.

AWOS-3PT 128.325	LITTLE ROCK APP CON 119.75 291.775	CLNC DEL 119.75	UNICOM 122.7 (CTAF) 0
----------------------------	--	---------------------------	---------------------------------



CATEGORY	A	B	C	D
LPV DA	514-1 250 (300-1)			NA
LNAV/VNAV DA	NA			
LNAV MDA	680-1	416 (500-1)	680-1¼ 416 (500-1¼)	NA
CIRCLING	760-1	496 (500-1)	780-1½ 515 (600-1½)	NA



SC-1, 22 FEB 2024 to 21 MAR 2024

SC-1, 22 FEB 2024 to 21 MAR 2024