

LOC I-STS <b>109.3</b>	APP CRS <b>321°</b>	Rwy ldg TDZE Apt Elev	<b>6000</b> <b>122</b> <b>129</b>
---------------------------	------------------------	-----------------------------	---

# ILS or LOC RWY 32

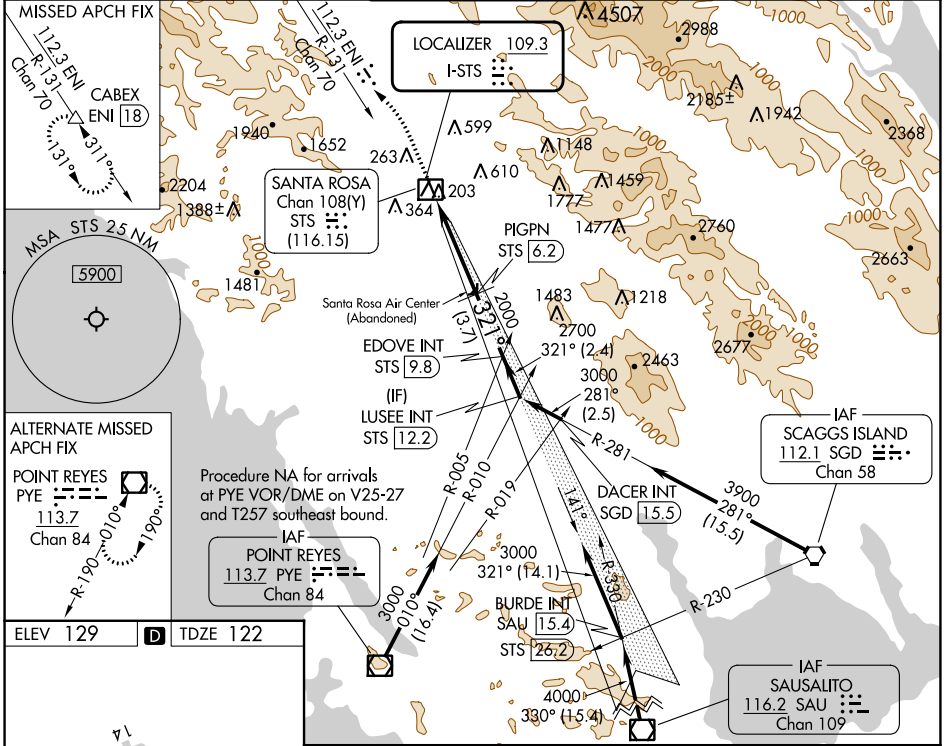
CHARLES M SCHULZ-SONOMA COUNTY (STS)

DME required.

Autopilot coupled approach NA below 1286. DME from STS DME. DME use requires simultaneous reception of I-STS and STS DME. For inop ALS increase S-ILS 32 visibility all Cats to RVR 4500, S-LOC 32 Cats A/B to RVR 5500.

MALSR  
MISSED APPROACH: Climb to 1020 then climb to 6000 on ENI VORTAC R-131 to CABEX/ENI VORTAC 18 DME and hold, continue climb-in-hold to 6000.

ATIS <b>120.55</b>	OAKLAND CENTER <b>127.8 353.5</b>	SANTA ROSA TOWER* <b>118.5 (CTAF) 363.0</b>	GND CON <b>121.9</b>	UNICOM <b>122.95</b>
-----------------------	--------------------------------------	--	-------------------------	-------------------------



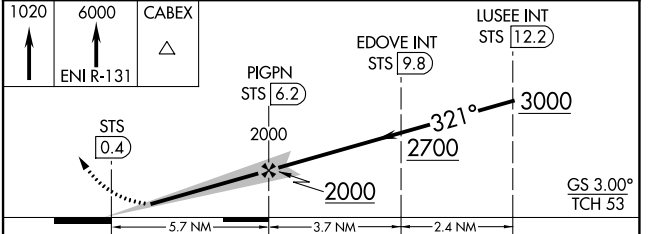
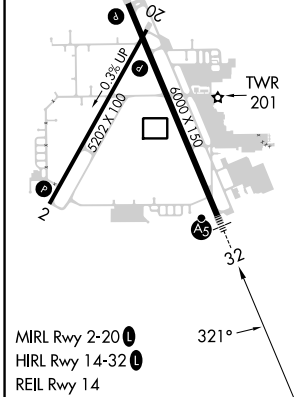
ALTERNATE MISSED APCH FIX

POINT REYES  
PYE  
113.7  
Chan 84

Procedure NA for arrivals at PYE VOR/DME on V25-27 and T257 southeast bound.

IAF  
POINT REYES  
113.7 PYE  
Chan 84

ELEV 129	D	TDZE 122
----------	---	----------



CATEGORY	A	B	C	D
S-ILS 32	377/24 255 (300-1/2)			
S-LOC 32	580/24	458 (500-1/2)	580/45	458 (500-7/8)
CIRCLING	600-1 471 (500-1)	680-1 551 (600-1)	1080-3 951 (1000-3)	1420-3 1291 (1300-3)

SW-2, 22 FEB 2024 to 21 MAR 2024

SW-2, 22 FEB 2024 to 21 MAR 2024

APP CRS	Rwy Idg	<b>5880</b>
<b>126°</b>	TDZE	<b>122</b>
	Apt Elev	<b>129</b>

# RNAV (GPS) RWY 14

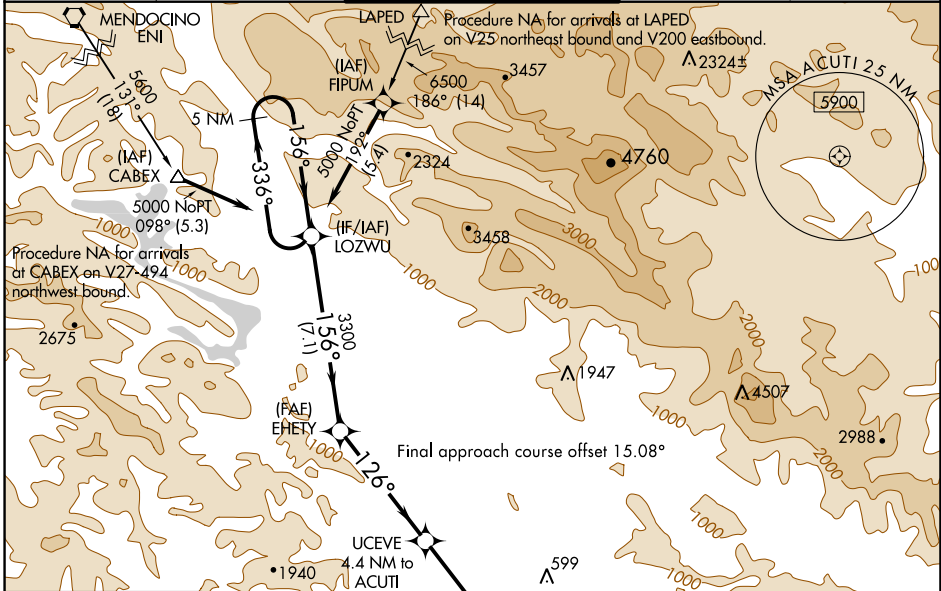
CHARLES M SCHULZ-SONOMA COUNTY (STS)

RNP APCH.

**⚠** Rwy 14 helicopter visibility reduction below 3/4 SM NA.

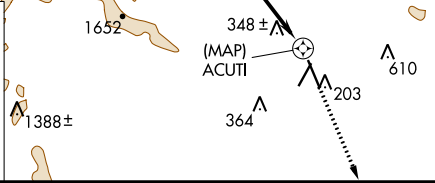
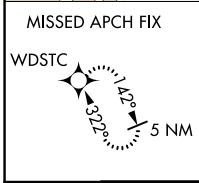
MISSED APPROACH: Climb to 5000 direct WDSTC and hold, continue climb-in-hold to 5000.

ATIS <b>120.55</b>	OAKLAND CENTER <b>127.8 353.5</b>	SANTA ROSA TOWER★ <b>118.5 (CTAF) 363.0</b>	GND CON <b>121.9</b>	UNICOM <b>122.95</b>
-----------------------	--------------------------------------	--	-------------------------	-------------------------

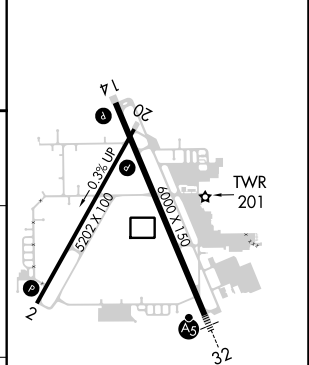
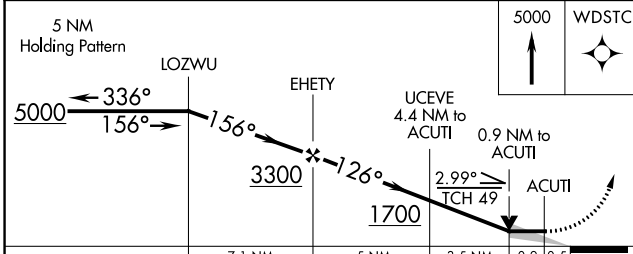


SW-2, 22 FEB 2024 to 21 MAR 2024

SW-2, 22 FEB 2024 to 21 MAR 2024



ELEV 129	<b>D</b>	TDZE 122
----------	----------	----------



CATEGORY	A	B	C	D
LNVA MDA	600-1	478 (500-1)	600-1 3/8	478 (500-1 3/8)
<b>C</b> CIRCLING	600-1 471 (500-1)	680-1 551 (600-1)	1080-3 951 (1000-3)	1420-3 1291 (1300-3)

MIRL Rwy 2-20 **Ⓛ**  
 HIRL Rwy 14-32 **Ⓛ**  
 REIL Rwy 14

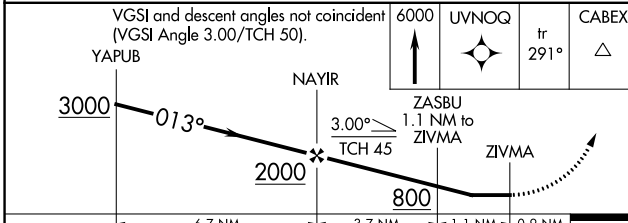
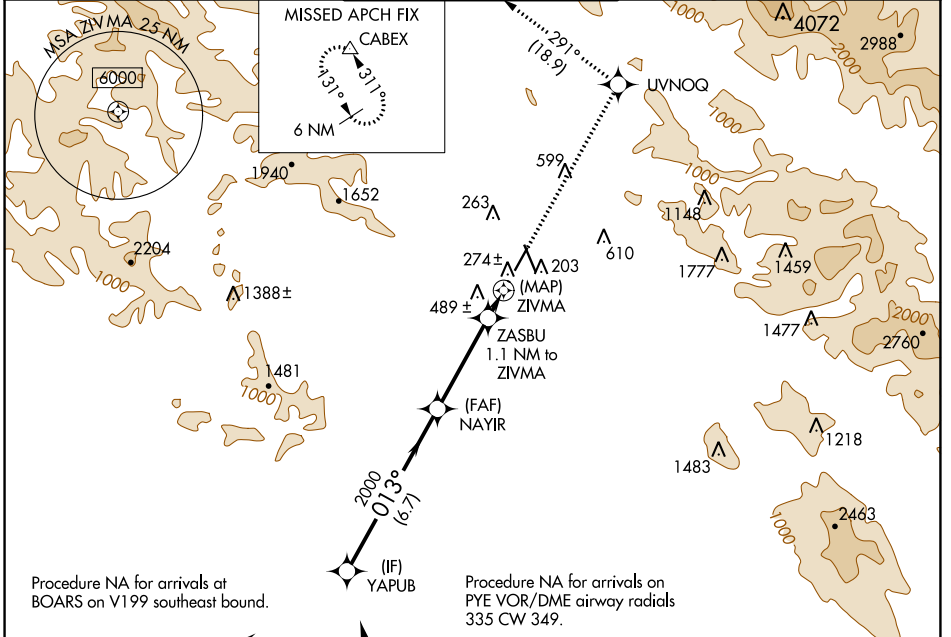
WAAS CH <b>69230</b> <b>W02A</b>	APP CRS <b>013°</b>	Rwy Idg TDZE <b>129</b> Apt Elev <b>129</b>	<b>4802</b>
--	------------------------	---	-------------

# RNAV (GPS) RWY 2

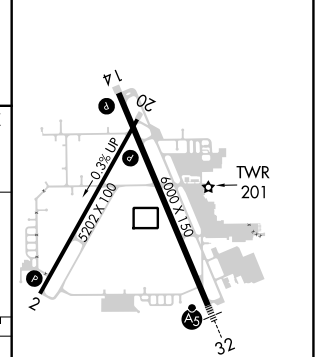
CHARLES M SCHULZ-SONOMA COUNTY (STS)

RNP APCH.	MISSED APPROACH: Climb to 6000 direct UVNOQ and on track 291° to CABEX and hold, continue climb-in-hold to 6000.
▼ ▲ Rwy 2 helicopter visibility reduction below ¾ SM NA.	

ATIS <b>120.55</b>	OAKLAND CENTER <b>127.8 353.5</b>	SANTA ROSA TOWER★ <b>118.5 (CTAF) 0 363.0</b>	GND CON <b>121.9</b>	UNICOM <b>122.95</b>
-----------------------	--------------------------------------	--	-------------------------	-------------------------



ELEV 129	D	TDZE 129
----------	---	----------



CATEGORY	A	B	C	D
LP MDA	500-1 371 (400-1)			
LNAV MDA	660-1	531 (600-1)	660-1½	531 (600-1½)
CIRCLING	660-1 531 (600-1)	680-1 551 (600-1)	1080-3 951 (1000-3)	1420-3 1291 (1300-3)

MIRL Rwy 2-20  
HIRL Rwy 14-32  
REL Rwy 14

SW-2, 22 FEB 2024 to 21 MAR 2024

SW-2, 22 FEB 2024 to 21 MAR 2024

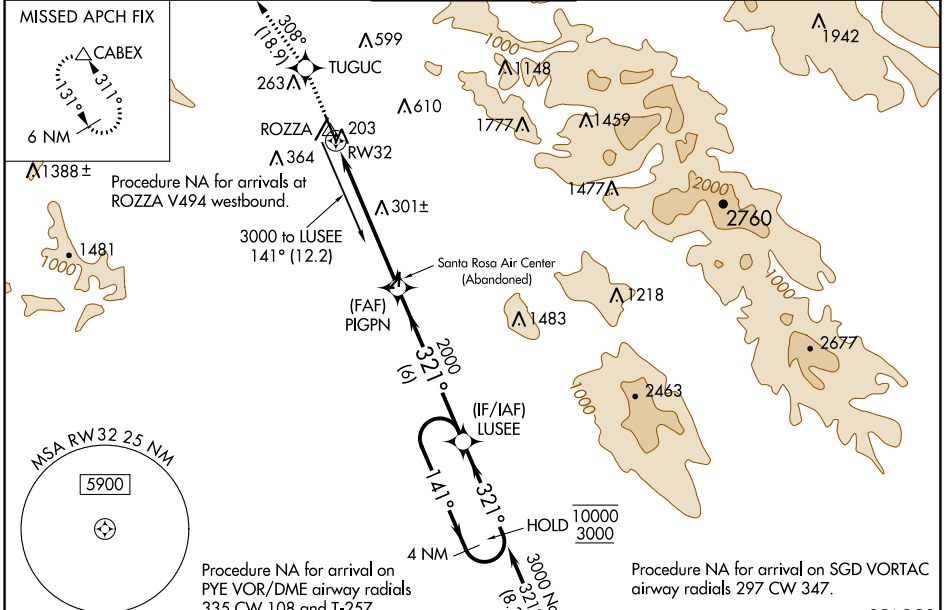
WAAS CH <b>72611</b> <b>W32A</b>	APP CRS <b>321°</b>	Rwy Idg TDZE Apt Elev	<b>6000</b> <b>122</b> <b>129</b>
--	------------------------	-----------------------------	---

# RNAV (GPS) RWY 32

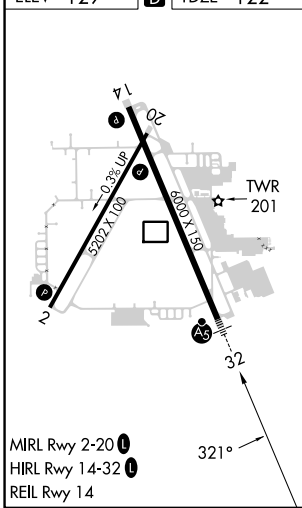
CHARLES M SCHULZ-SONOMA COUNTY (STS)

RNP APCH-GPS.	MALSRL	MISSED APPROACH: Climb to 6000 direct TUGUC and on track 308° to CABEX and hold, continue climb-in-hold to 6000.
<p>▼ For uncompensated Baro-VNAV systems, LNAV/VNAV NA below -4°C or above 54°C. #RVR 1800 authorized with use of FD or AP or HUD to DA.</p>		

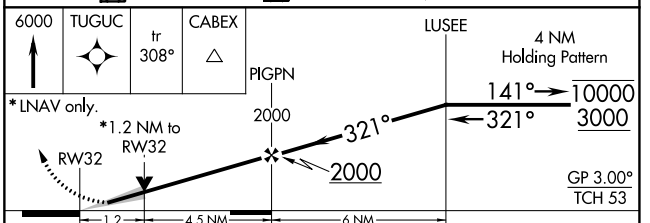
ATIS <b>120.55</b>	OAKLAND CENTER <b>127.8 353.5</b>	SANTA ROSA TOWER* <b>118.5 (CTAF) 0 363.0</b>	GND CON <b>121.9</b>	UNICOM <b>122.95</b>
-----------------------	--------------------------------------	--	-------------------------	-------------------------



ELEV 129	D	TDZE 122
----------	---	----------



POINT REYES PYE	SAUSALITO SAU	SCAGGS ISLAND SGD
5000 04° (12.8)	5000 329° (21.1)	5000 258° (12.7)



CATEGORY	A	B	C	D
LPV DA#		322/24	200 (200-½)	
LNAV/VNAV DA		570/50	448 (500-1)	
LNAV MDA	560/24	438 (500-½)	560/40	438 (500-¾)
CIRCLING	600-1 471 (500-1)	680-1 551 (600-1)	1080-3 951 (1000-3)	1420-3 1291 (1300-3)

SW-2, 22 FEB 2024 to 21 MAR 2024

SW-2, 22 FEB 2024 to 21 MAR 2024