

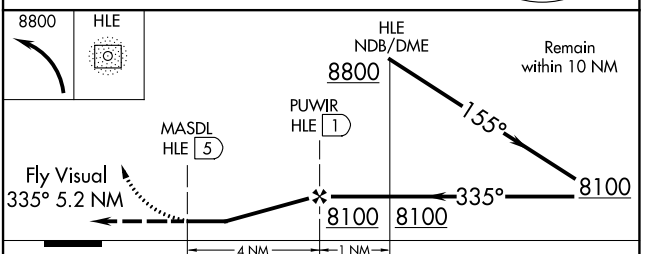
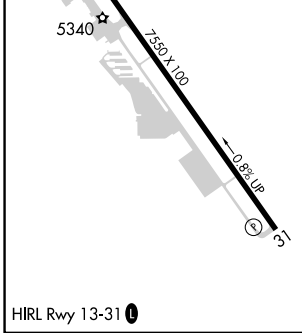
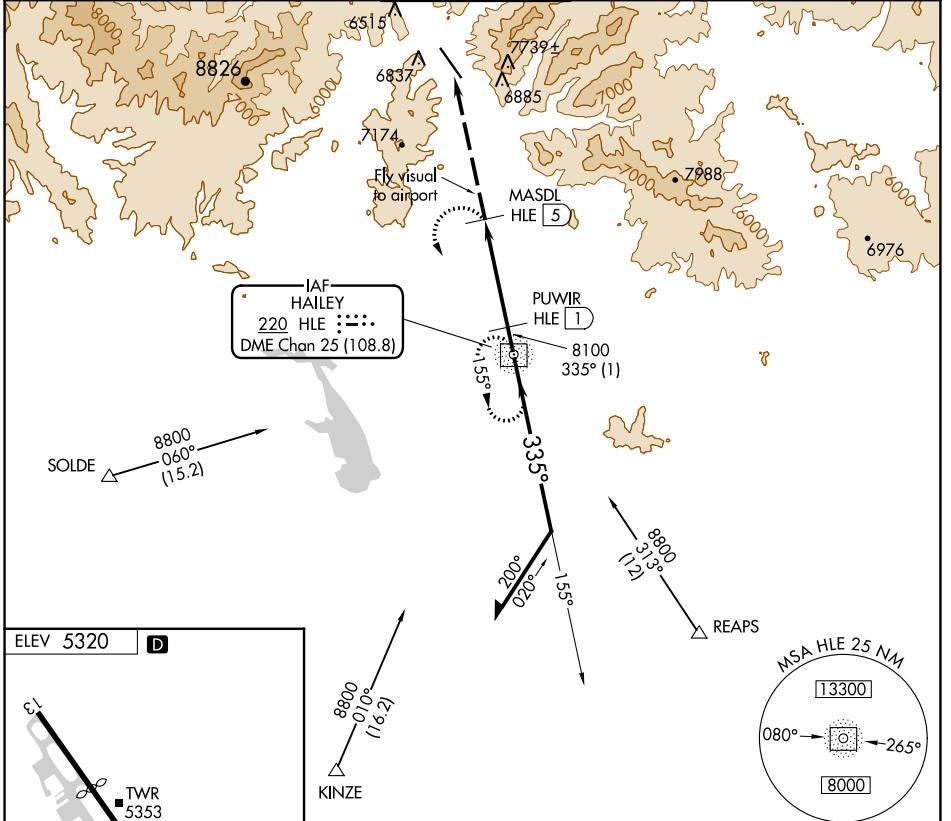
NDB/DME HLE 220	APP CRS 335°	Rwy Idg TDZE Apt Elev N/A N/A 5320
Chan 25 (108.8)		

NDB/DME-A FRIEDMAN MEML (SUN)

NA Circling NA NE of Rwy 13-31. Visibility reduction by helicopters NA. When control tower closed, procedure not authorized. Occasional ADF needle swings away from the final approach course are to be expected north of missed approach point. Procedure NA at night.

MISSED APPROACH: Climbing left turn to 8800 direct HLE NDB and hold.

ATIS 128.225	SALT LAKE CENTER 118.05 353.0	HAILEY TOWER* 125.6 (CTAF)	GND CON 121.7	UNICOM 122.95
------------------------	---	--------------------------------------	-------------------------	-------------------------



CATEGORY	A	B	C	D
CIRCLING	8040-5	2720 (2800-5)		NA

NW-1, 23 MAR 2023 to 20 APR 2023

NW-1, 23 MAR 2023 to 20 APR 2023

WAAS CH 77639 W31A	APP CRS 320°	Rwy Idg TDZE 5289 Apt Elev 5320
--	------------------------	---

RNAV (GPS) X RWY 31

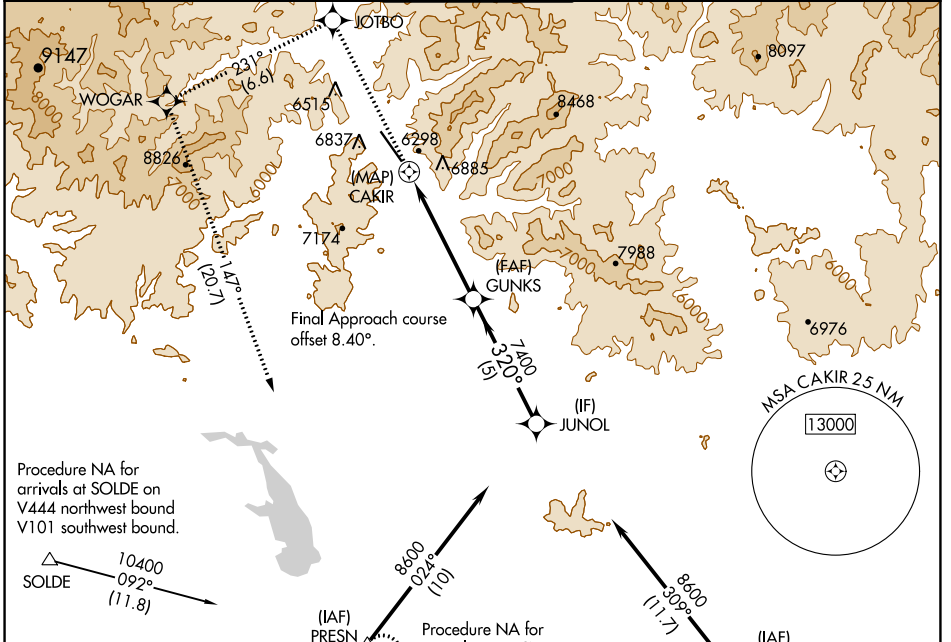
FRIEDMAN MEML (SUN)

⚠ MISSED APPROACH: (Do not exceed 185 KIAS until WOGAR) Climb to 10500 direct JOTBO and on track 231° to WOGAR and on track 147° to PRESN and hold. *Missed approach requires minimum climb of 420 feet per NM to 9500; if unable to meet climb gradient, see RNAV (GPS) Y RWY 31.

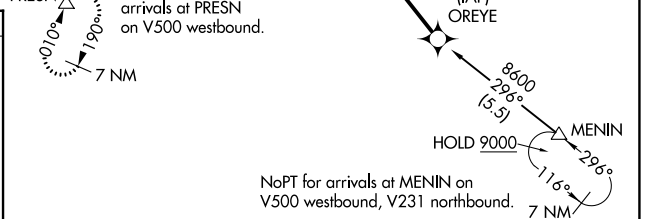
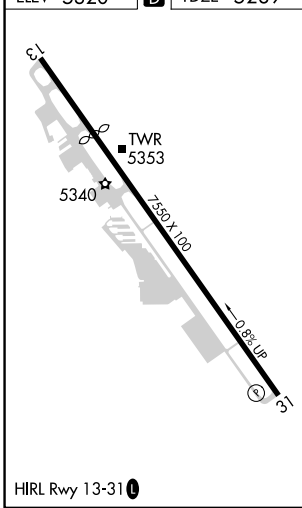
⚠ DME/DME RNP-0.3 NA. Rwy 31 helicopter visibility reduction below 1 SM NA.

⚠ -14°C

ATIS 128.225	SALT LAKE CENTER 118.05 363.0	HAILEY TOWER * 125.6 (CTAF) 0	GND CON 121.7	UNICOM 122.95
------------------------	---	---	-------------------------	-------------------------



ELEV 5320	D	TDZE 5289
-----------	----------	-----------



10500	JOTBO	tr 231°	WOGAR	tr 147°	PRESN	GUNKS	JUNOL
						7400	8600
			CAKIR				
						3.50° TCH 55	
CATEGORY	A	B	C	D			
LP MDA*	6180-1¼	891 (900-1¼)	6180-2½	891 (900-2½)			
LNVA MDA*	6920-1¼ 1631 (1600-1¼)	6920-1½ 1631 (1600-1½)	6920-3	1631 (1600-3)			

NW-1, 23 MAR 2023 to 20 APR 2023

NW-1, 23 MAR 2023 to 20 APR 2023

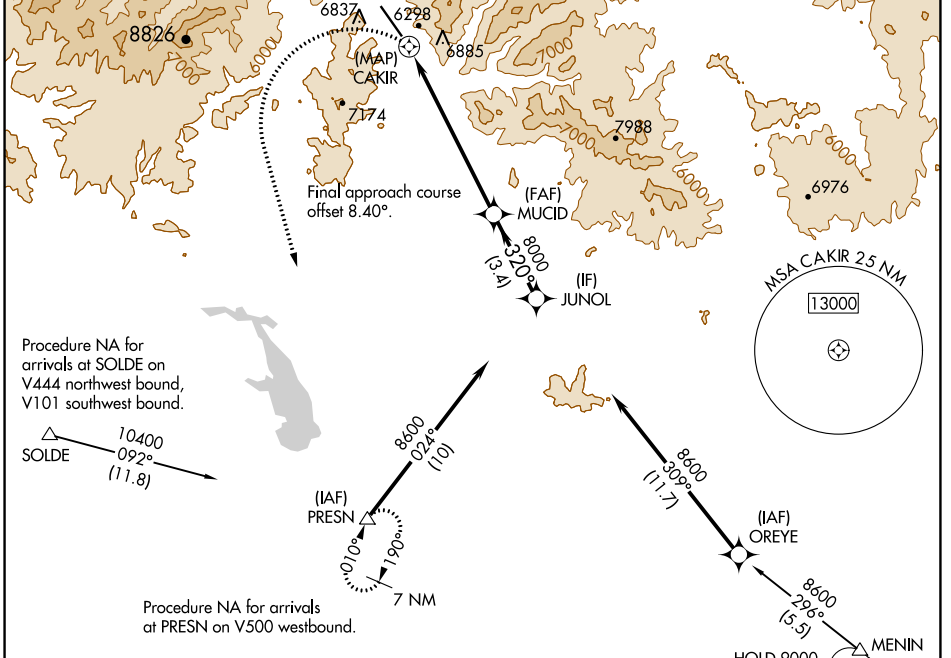
WAAS CH 62939 W31B	APP CRS 320°	Rwy Idg TDZE 5289 Apt Elev 5320	6631
--	------------------------	---	-------------

RNAV (GPS) Y RWY 31

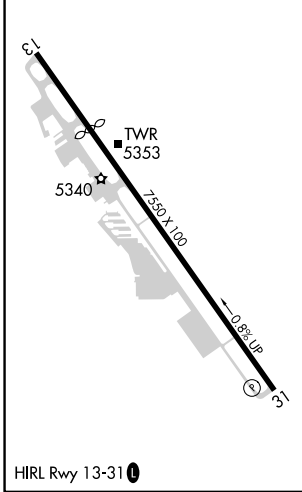
FRIEDMAN MEML (SUN)

⚠ Circling NA northeast of Rwy 13-31.
⚠ DME/DME RNP-0.3 NA. Rwy 31 helicopter visibility reduction below 1 SM NA.
⚠ -14°C
⚠ MISSED APPROACH: (Do not exceed 185 KIAS until PRESN) Climbing left turn to 8700 direct PRESN and hold.*Missed approach requires minimum climb of 410 feet per NM to 7600.

ATIS 128.225	SALT LAKE CENTER 118.05 363.0	HAILEY TOWER* 125.6 (CTAF)	GND CON 121.7	UNICOM 122.95
------------------------	---	--------------------------------------	-------------------------	-------------------------



ELEV 5320	D	TDZE 5289
-----------	----------	-----------



8700	PRESN	MUCID	JUNOL
△			
CAKIR	MUCID → JUNOL		
	320°		8600
	8000		
0.5 NM	6.7 NM	3.4 NM	
CATEGORY	A	B	C
LP MDA*	6900-1¼ 1611 (1600-1¼)	6900-1½ 1611 (1600-1½)	6900-3 1611 (1600-3)
LP MDA	7220-1¼ 1931 (1900-1¼)	7220-1½ 1931 (1900-1½)	7220-3 1931 (1900-3)
LNAV MDA*	7100-1¼ 1811 (1800-1¼)	7100-1½ 1811 (1800-1½)	7100-3 1811 (1800-3)
LNAV MDA	7340-1¼ 2051 (2100-1¼)	7340-1½ 2051 (2100-1½)	7340-3 2051 (2100-3)
C CIRCLING	7340-1¼ 2020 (2100-1¼)	7360-1½ 2040 (2100-1½)	7580-3 7940-3 2260 (2300-3) 2620 (2700-3)

NW-1, 23 MAR 2023 to 20 APR 2023

NW-1, 23 MAR 2023 to 20 APR 2023