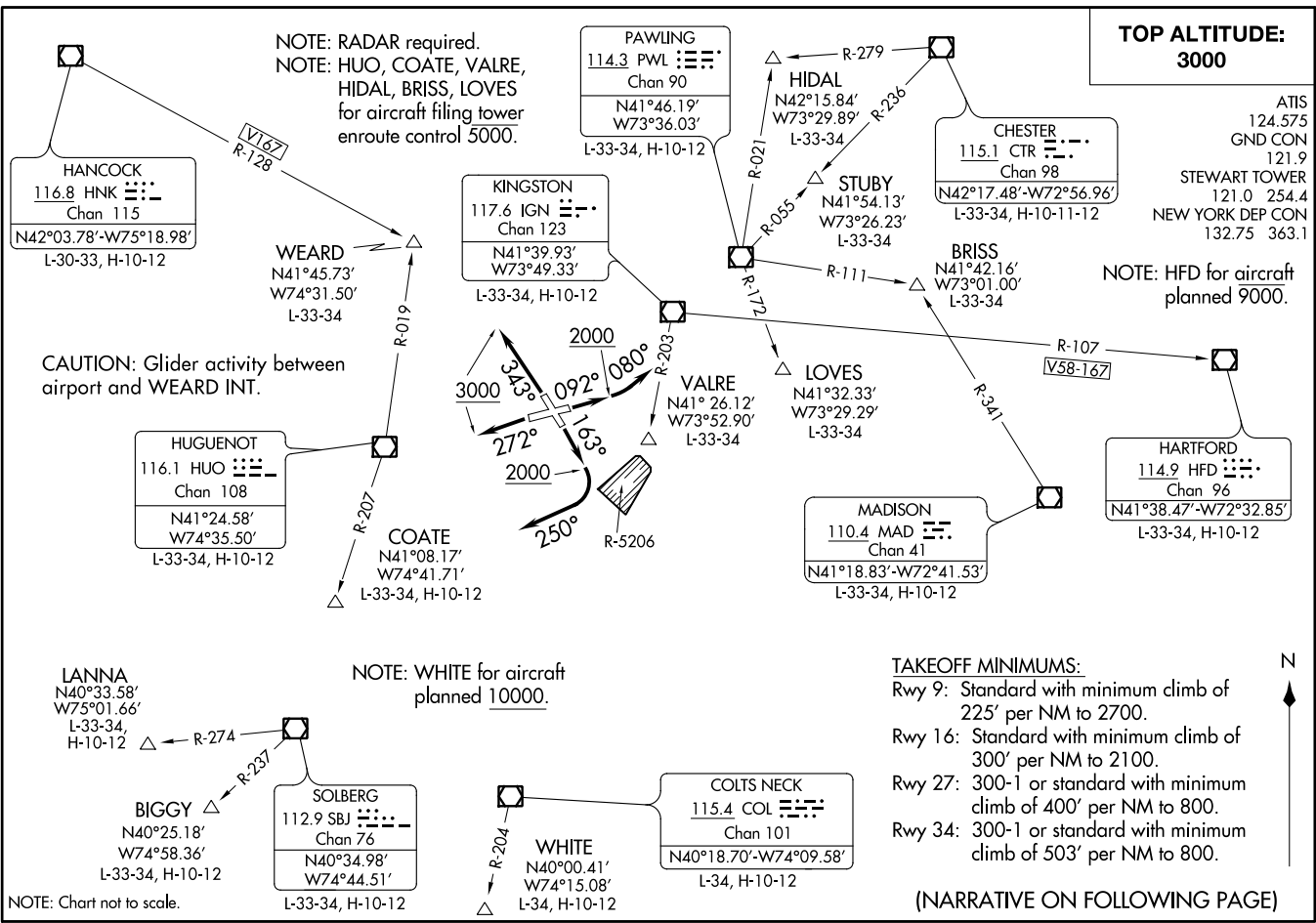


STEWART NINE DEPARTURE  
(SWF9.SWF) 20JUN19

NEW YORK, NEW YORK  
NEW YORK STEWART INTL (SWT)



**TOP ALTITUDE: 3000**

ATIS 124.575  
GND CON 121.9  
STEWART TOWER 121.0 254.4  
NEW YORK DEP CON 132.75 363.1

NOTE: HFD for aircraft planned 9000.

**TAKEOFF MINIMUMS:**

Rwy 9: Standard with minimum climb of 225' per NM to 2700.  
Rwy 16: Standard with minimum climb of 300' per NM to 2100.  
Rwy 27: 300-1 or standard with minimum climb of 400' per NM to 800.  
Rwy 34: 300-1 or standard with minimum climb of 503' per NM to 800.

(NARRATIVE ON FOLLOWING PAGE)

(SWF9.SWF) 22335  
STEWART NINE DEPARTURE

AL-450 (FAA)  
NEW YORK STEWART INTL (SWT)  
NEW YORK, NEW YORK



DEPARTURE ROUTE DESCRIPTION

TAKEOFF RUNWAY 9: Climb heading 092° to 2000, then turn left heading 080°, maintain 3000, thence....

TAKEOFF RUNWAY 16: Climb heading 163° to 2000, then turn right heading 250°, maintain 3000, thence....

TAKEOFF RUNWAY 27: Climb heading 272° to 3000, thence....

TAKEOFF RUNWAY 34: Climb heading 343° to 3000, thence....

...via radar vectors to assigned route/fix, expect clearance to filed altitude/flight level within ten (10) minutes after departure.

LOST COMMUNICATIONS: If radio contact is not established/lost within 2 minutes after departure, proceed on course and climb to 5000. Ten minutes after departure, climb to filed altitude/flight level.

NE-2, 18 MAY 2023 to 15 JUN 2023

NE-2, 18 MAY 2023 to 15 JUN 2023