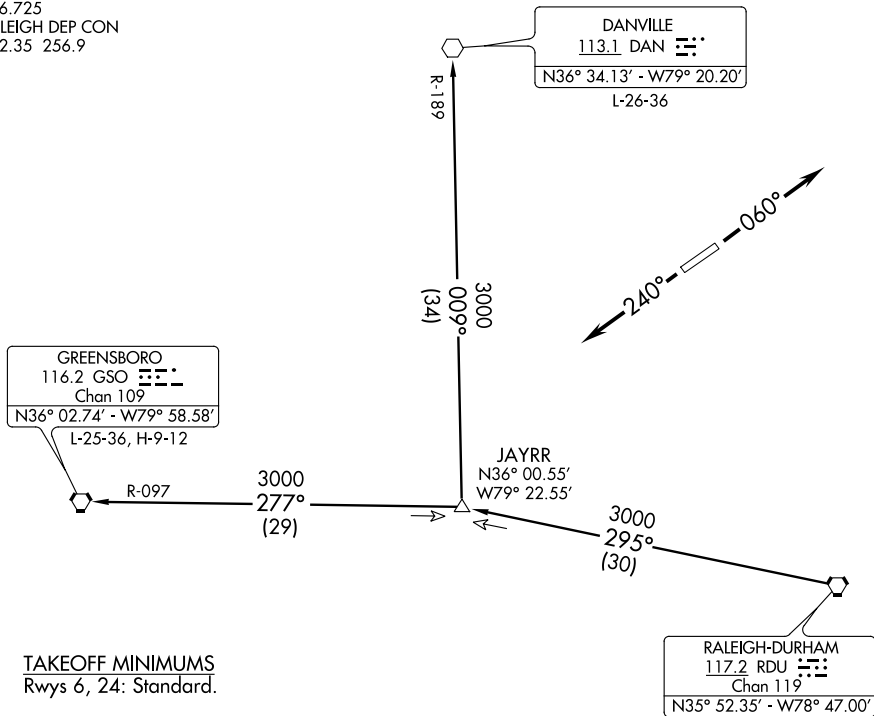


(BLUE7.RDU) 20142

BLUE DEVIL SEVEN DEPARTURE

RALEIGH RGNL AT PERSON COUNTY (T'DF)
AL-6901 (FAA) ROXBORO, NORTH CAROLINA

AWOS-3
126.725
RALEIGH DEP CON
132.35 256.9



TAKEOFF MINIMUMS
Rwys 6, 24: Standard.

NOTE: RADAR required.
NOTE: Turbojets NA.

NOTE: Chart not to scale.

DEPARTURE ROUTE DESCRIPTION

TAKEOFF RUNWAY 6: Climb on heading 060°, thence....

TAKEOFF RUNWAY 24: Climb on heading 240°, thence....

....or as assigned for vectors to assigned transition. Expect clearance to filed altitude/flight level ten minutes after departure.

DANVILLE TRANSITION (BLUE7.DAN): From over RDU VORTAC on RDU R-295 to JAYRR then on DAN R-189 to DAN VOR.

GREENSBORO TRANSITION (BLUE7.GSO): From over RDU VORTAC on RDU R-295 to JAYRR then on GSO R-097 to GSO VORTAC.

BLUE DEVIL SEVEN DEPARTURE

(BLUE7.RDU) 26MAR20

ROXBORO, NORTH CAROLINA
RALEIGH RGNL AT PERSON COUNTY (T'DF)

SE-2, 08 OCT 2020 to 05 NOV 2020

SE-2, 08 OCT 2020 to 05 NOV 2020