

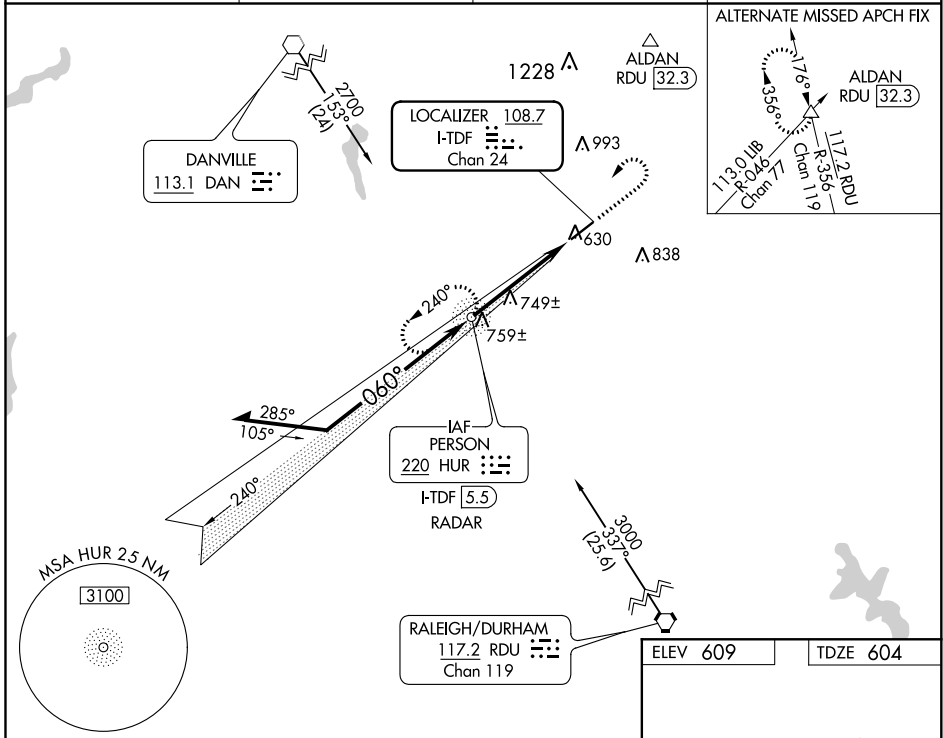
LOC/DME I-TDF 108.7 Chan 24	APP CRS 060°	Rwy Idg 5702 TDZE 604 Apt Elev 609
---	------------------------	---

ILS or LOC RWY 6

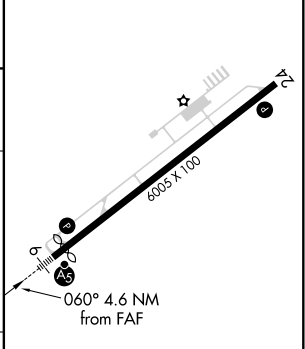
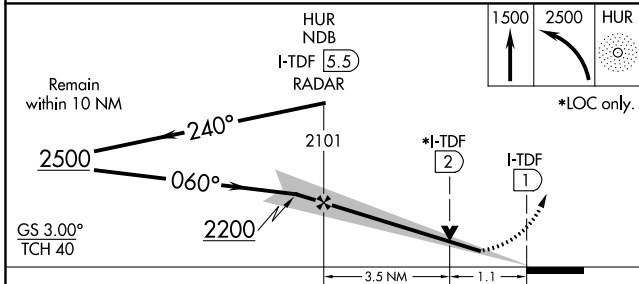
RALEIGH RGNL AT PERSON COUNTY (TDF)

ADF required. ▽ △NA	MALSR ⚡	MISSED APPROACH: Climb to 1500 then climbing left turn to 2500 direct HUR NDB and hold.
---------------------------	------------	---

AWOS-3 126.725	RALEIGH APP CON 132.35 256.9	GCO 119.7	UNICOM 122.7 (CTAF) 0
--------------------------	--	---------------------	--



ELEV 609	TDZE 604
----------	----------



CATEGORY	A	B	C	D
S-ILS 6	854-½ 250 (300-½)			
S-LOC 6	1000-½ 396 (400-½)	1000-¾ 396 (400-¾)	1000-¾ 396 (400-¾)	1000-¾ 396 (400-¾)
CIRCLING	1080-1 471 (500-1)	1080-1½ 471 (500-1½)	1160-2 551 (600-2)	

MIRL Rwy 6-24 0					
FAF to MAP 4.6 NM					
Knots	60	90	120	150	180
Min:Sec	4:36	3:04	2:18	1:50	1:32

ILS or LOC RWY 6

SE-2, 08 OCT 2020 to 05 NOV 2020

SE-2, 08 OCT 2020 to 05 NOV 2020

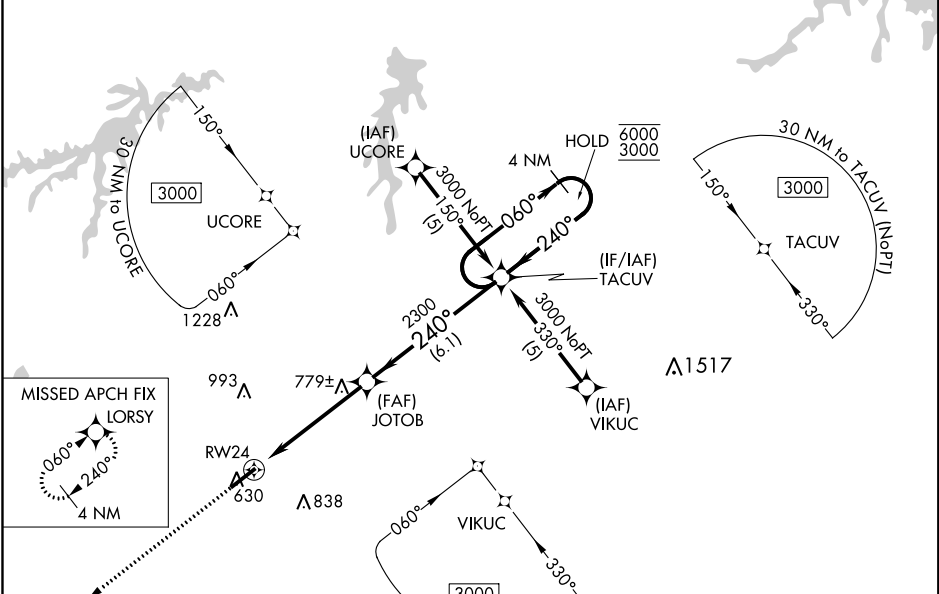
WAAS CH 50510 W24A	APP CRS 240°	Rwy Idg TDZE Apt Elev	6005 609 609
--	------------------------	-----------------------------	---

RNAV (GPS) RWY 24
RALEIGH RGNL AT PERSON COUNTY (TDF)

RNP APCH.
 ▼ Rwy 24 helicopter visibility reduction below ¾ SM NA. For uncompensated
 ▲ Baro-VNAV systems, LNAV/VNAV NA below -16°C or above 54°C.

MISSED APPROACH:
Climb to 3000 direct
LORSY and hold.

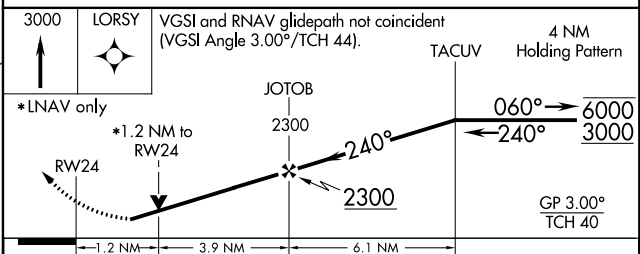
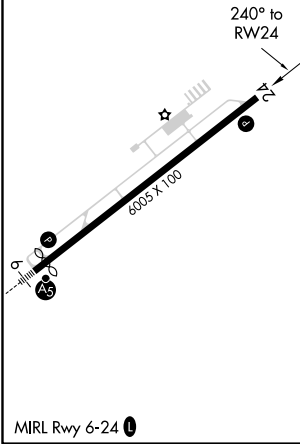
AWOS-3 126.725	RALEIGH APP CON 132.35 256.9	GCO 119.7	UNICOM 122.7 (CTAF) 0
--------------------------	--	---------------------	---------------------------------



SE-2, 08 OCT 2020 to 05 NOV 2020

SE-2, 08 OCT 2020 to 05 NOV 2020

ELEV 609	TDZE 609
-----------------	-----------------



CATEGORY	A	B	C	D
LPV DA		920-1	311 (400-1)	
LNAV/VNAV DA		997-1½	388 (400-1½)	
LNAV MDA	1040-1	431 (500-1)	1040-1¼ 431 (500-1¼)	1040-1½ 431 (500-1½)
CIRCLING	1080-1	471 (500-1)	1080-1½ 471 (500-1½)	1160-2 551 (600-2)

WAAS CH 86512 W06A	APP CRS 060°	Rwy Idg 5702 TDZE 604 Apt Elev 609
--	------------------------	---

RNAV (GPS) RWY 6

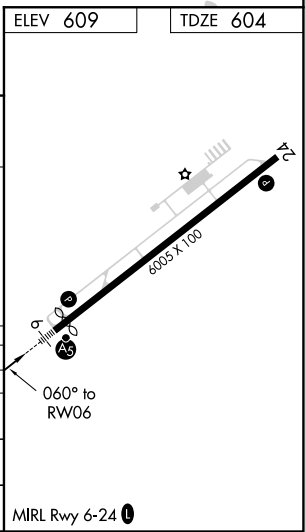
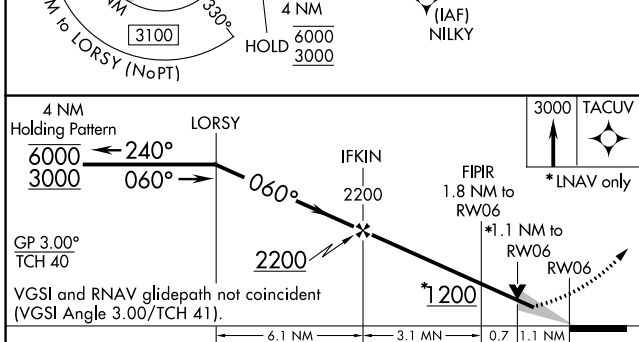
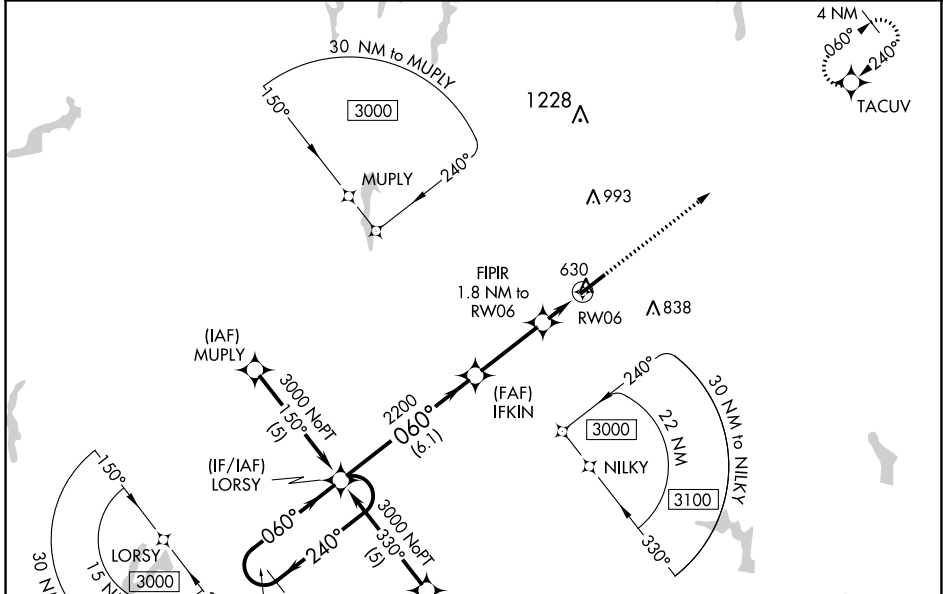
RALEIGH RGNL AT PERSON COUNTY (TDF)

RNP APCH

Baro-VNAV and VDP NA when using Danville altimeter setting. For uncompensated Baro-VNAV systems, LNAV/VNAV NA below -16°C or above 54°C. When local altimeter setting not received, use Danville altimeter setting and increase all LPV DA to 916, LNAV/VNAV DA to 1150 and all MDA 80 feet, increase LNAV Cat C visibility to 7/8 SM. For inop ALS, increase LNAV/VNAV all Cats visibility to 1 1/8 SM and LNAV Cat C visibility to 1 SM. For inop ALS, when using Danville altimeter setting, increase LPV all Cats visibility to 7/8 SM, LNAV/VNAV all Cats visibility to 1 1/8 SM, and LNAV Cat D visibility to 1 3/8 SM.

MALSR MISSED APPROACH: Climb to 3000 direct TACUV and hold.

AWOS-3 126.725	RALEIGH APP CON 132.35 256.9	GCO 119.7	UNICOM 122.7 (CTAF)
--------------------------	--	---------------------	-------------------------------



CATEGORY	A	B	C	D
LPV DA		854-1/2	250 (300-1/2)	
LNAV/VNAV DA		1090-1/4	486 (500-1/4)	
LNAV MDA	980-1/2	376 (400-1/2)	980-5/8 376 (400-5/8)	980-1 376 (400-1)
CIRCLING	1080-1	471 (500-1)	1080-1/2 471 (500-1/2)	1160-2 551 (600-2)

SE-2, 08 OCT 2020 to 05 NOV 2020

SE-2, 08 OCT 2020 to 05 NOV 2020