

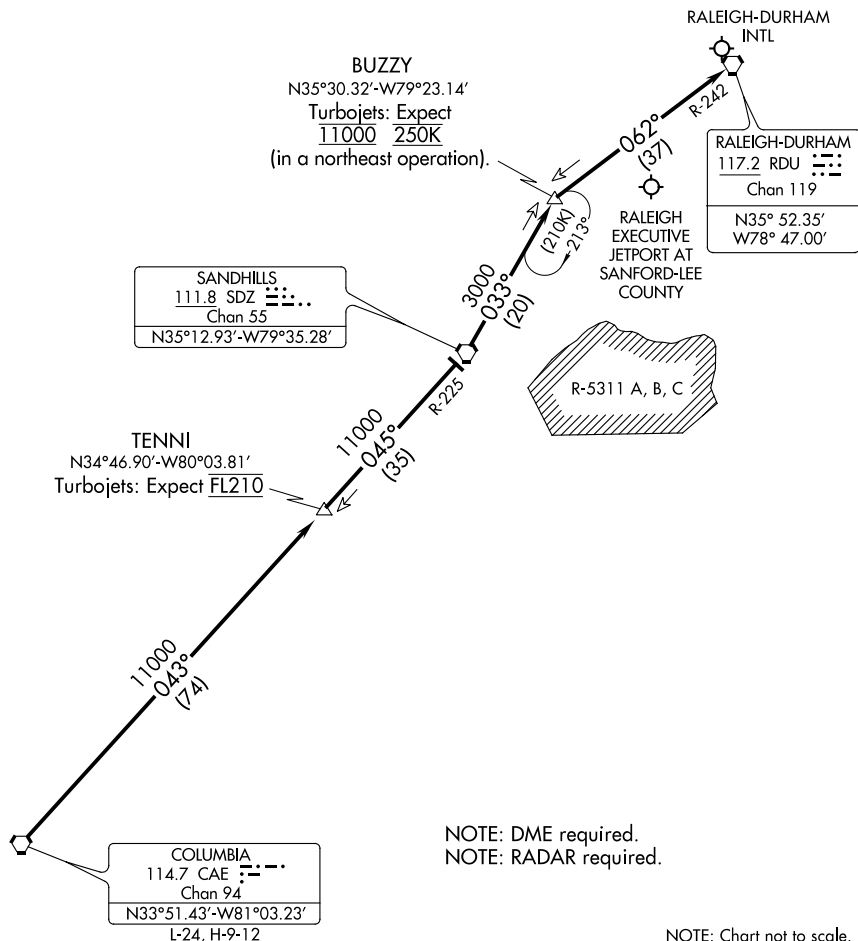
BUZZY NINE ARRIVAL

RALEIGH-DURHAM, NORTH CAROLINA

RALEIGH APP CON
127.675 307.9
RDU D-ATIS
123.8

RALEIGH RGNL AT
PERSON COUNTY

HENDERSON-
OXFORD



SE-2, 08 OCT 2020 to 05 NOV 2020

SE-2, 08 OCT 2020 to 05 NOV 2020

ARRIVAL ROUTE DESCRIPTION

COLUMBIA TRANSITION (CAE.BUZZY9): From over CAE VORTAC on CAE R-043 and SDZ R-225 to SDZ VORTAC, then on SDZ R-033 to BUZZY.

... Thence on RALEIGH/DURHAM VORTAC R-242 to RDU. Expect RADAR vectors to final approach course after BUZZY.

BUZZY NINE ARRIVAL

(BUZZY.BUZZY9) 26MAR20

RALEIGH-DURHAM, NORTH CAROLINA

SOUTH BOSTON SEVEN ARRIVAL

RALEIGH-DURHAM, NORTH CAROLINA

RALEIGH APP CON
127.675 307.9
RDU D-ATIS
123.8

ROANOKE
109.4 ROA
Chan 31
N37°20.61'-W80°04.22'
L-26, H-10-12

GORDONSVILLE
115.6 GVE
Chan 103
N38°00.82'-W78°09.18'
L-34-36, H-10-12

PULASKI
116.8 PSK
Chan 115
N37°05.26'-W80°42.77'
L-26, H-10-12

SOUTH BOSTON
110.4 SBV
Chan 41
N36°40.50'-W79°00.87'

LIBERTY
113.0 LIB
Chan 77

3000
213°
(90)

6000
100°
(32)

TABER
N37°02.92'
W80°02.93'

6000
120°
(55)

6000
132°
(65)

ALDAN
N36°23.88'-W78°56.05'
TURBOJET VERTICAL NAVIGATION
PLANNING INFORMATION
LANDING NORTHEAST:
Expect 12000
LANDING SOUTHWEST:
Expect 10000 250K

BILLA
N36°14.61'-W78°53.37'
TURBOJET VERTICAL NAVIGATION
PLANNING INFORMATION
Expect 9000
TRIANGLE NORTH EXECUTIVE

RALEIGH-DURHAM
117.2 RDU
Chan 119
N35°52.35'
W78°47.00'

NOTE: RADAR required.
NOTE: RADAR required on PSK transition to TABER.

NOTE: Chart not to scale.

ARRIVAL ROUTE DESCRIPTION

GORDONSVILLE TRANSITION (GVE.SBV7): From over GVE VORTAC on GVE R-213 and SBV R-032 to SBV VORTAC. Thence. . . .

PULASKI TRANSITION (PSK.SBV7): From over PSK VORTAC on PSK R-100 to TABER, then on SBV R-300 to SBV VORTAC. Thence. . . .

ROANOKE TRANSITION (ROA.SBV7): From over ROA VOR/DME on ROA R-132 and SBV R-314 to SBV VORTAC. Thence

. . . .from over SBV VORTAC on SBV R-172 and RDU VORTAC R-356 to RDU VORTAC. For arrivals to KRDU, KLHZ, KJNX, and KTTA airports: Expect RADAR vectors to final approach course after BILLA.

For arrivals to KHNZ and KTDF airports: Expect RADAR vectors to final approach course after ALDAN.

SOUTH BOSTON SEVEN ARRIVAL

RALEIGH-DURHAM, NORTH CAROLINA

SE-2, 08 OCT 2020 to 05 NOV 2020

SE-2, 08 OCT 2020 to 05 NOV 2020