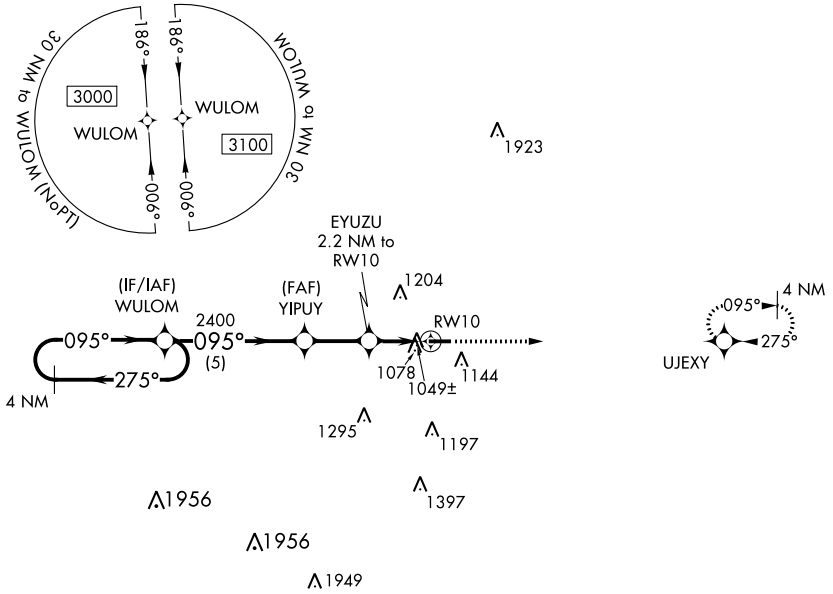


WAAS CH 61134 W10A	APP CRS 095°	Rwy Idg TDZE Apt Elev	4002 920 920
--	------------------------	-----------------------------	---

RNAV (GPS) RWY 10

MASON JEWETT FIELD (TEW)

RNP APCH.		MISSED APPROACH: Climb to 3000 direct UJEXY and hold.
<p>▼ Rwy 10 helicopter visibility reduction below 1 SM NA. Straight-in Rwy 10 NA at night, Circling Rwy 10 NA at night.</p> <p>▲</p>		
AWOS-3P 119.425	GREAT LAKES APP CON ★ 118.65 226.4	UNICOM 122.7 (CTAF) 0



ELEV 920	TDZE 920
----------	----------

Visual Segment - Obstacles. 3000 UJEXY

4002 x 75

28 28

01

095° to RWY 10

MIRL Rwy 10-28 0
REIL Rwy 10 and 28 0

4 NM Holding Pattern	Visual Segment - Obstacles.	3000	UJEXY
WULOM	YIPUY	EYUZU 2.2 NM to RWY 10	
3000	2400	1660	
	5 NM	2.3 NM	2.2 NM
CATEGORY	A	B	C
LP MDA	1300-1	380 (400-1)	NA
LNVA MDA	1380-1	460 (500-1)	NA
CIRCLING	1500-1	580 (600-1)	NA

EC-1, 17 JUN 2021 to 15 JUL 2021

EC-1, 17 JUN 2021 to 15 JUL 2021

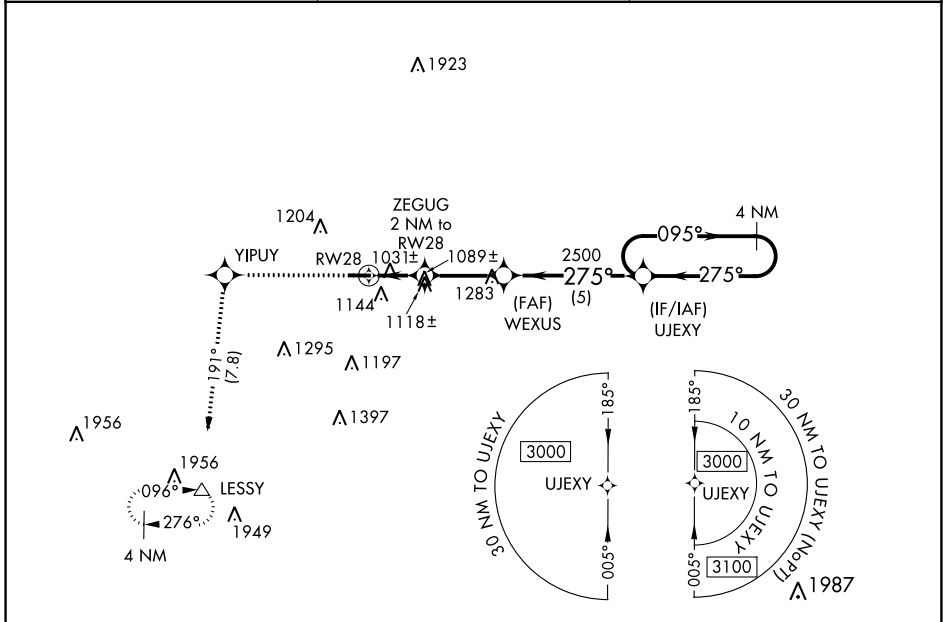
WAAS CH 53534 W28A	APP CRS 275°	Rwy Idg TDZE Apt Elev	4002 918 920
--	------------------------	-----------------------------	---

RNAV (GPS) RWY 28

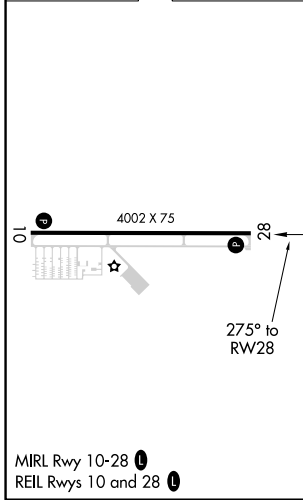
MASON JEWETT FIELD (TEW)

RNP APCH.	MISSED APPROACH: Climb to 3000 direct YIPUY and on track 191° direct LESSY and hold.
<p>▼ Rwy 28 helicopter visibility reduction below 3/4 SM NA.</p> <p>▲ Circling Rwy 10 NA at night.</p>	

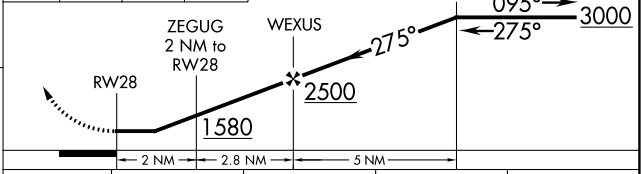
AWOS-3P 119.425	GREAT LAKES APP CON ★ 118.65 226.4	UNICOM 122.7 (CTAF)
---------------------------	--	-------------------------------



ELEV 920	TDZE 918
----------	----------



3000	YIPUY	tr 191°	LESSY	Visual Segment - Obstacles.	4 NM Holding Pattern
------	-------	---------	-------	-----------------------------	----------------------



CATEGORY	A	B	C	D
LP MDA	1300-1	382 (400-1)		NA
LNAV MDA	1380-1	462 (500-1)		NA
CIRCLING	1500-1	580 (600-1)		NA

EC-1, 17 JUN 2021 to 15 JUL 2021

EC-1, 17 JUN 2021 to 15 JUL 2021