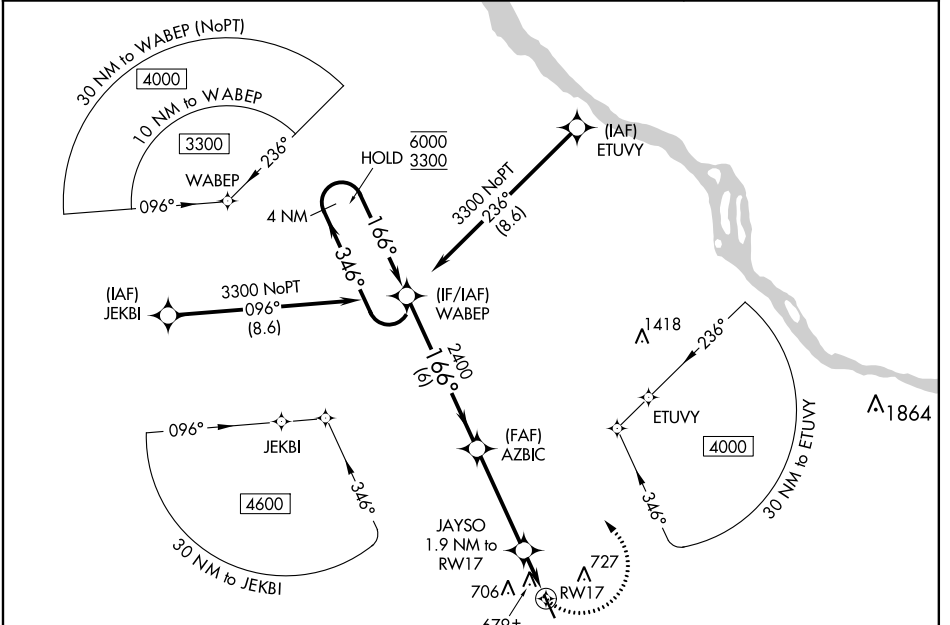


APP CRS	Rwy Idg	4394
166°	TDZE	478
	Apr Elev	495

RNAV (GPS) RWY 17

YORK (THV)

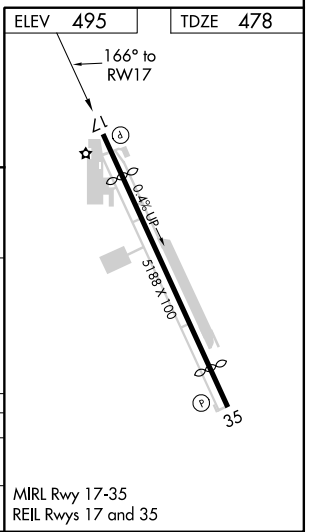
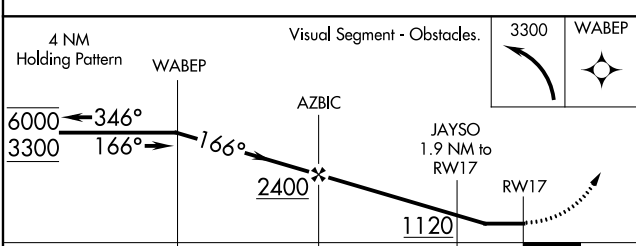
RNP APCH.		MISSED APPROACH: Climbing left turn to 3300 direct WABEP and hold.	
ASOS	HARRISBURG APP CON	CLNC DEL	UNICOM
119.275	124.1 273.525	121.65	123.0 (CTAF)



NE-4, 07 OCT 2021 to 04 NOV 2021

NE-4, 07 OCT 2021 to 04 NOV 2021

ELEV	495	TDZE	478
------	------------	------	------------



CATEGORY	A	B	C	D
LNVA MDA	940-1	462 (500-1)	940-1 $\frac{3}{8}$	462 (500-1 $\frac{3}{8}$)
CIRCLING	1220-1 725 (800-1)	1240-1 745 (800-1)	1260-2 $\frac{1}{4}$ 765 (800-2 $\frac{1}{4}$)	1260-2 $\frac{1}{2}$ 765 (800-2 $\frac{1}{2}$)

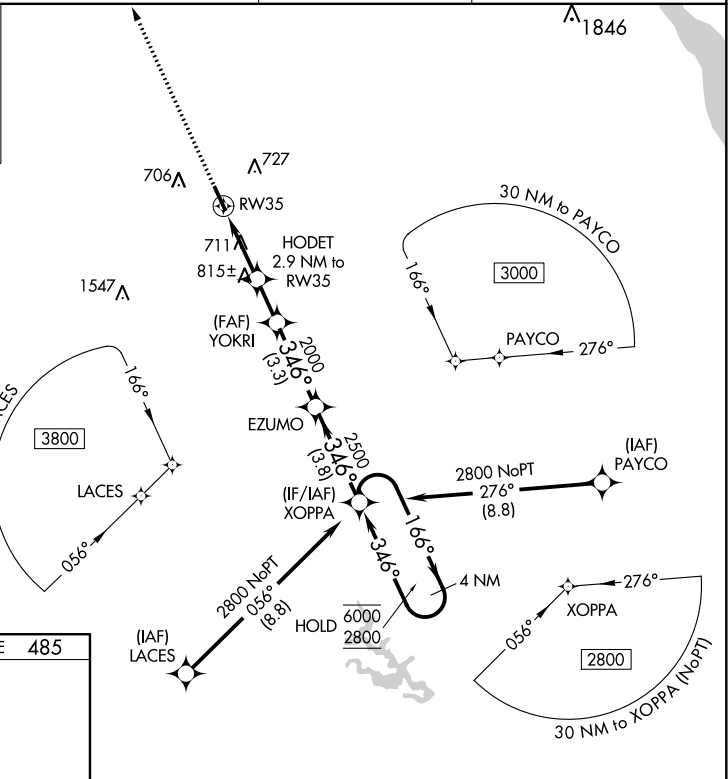
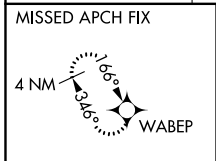
MIRL Rwy 17-35
REIL Rwy 17 and 35

APP CRS	Rwy Idg	4449
346°	TDZE	485
	Apt Elev	495

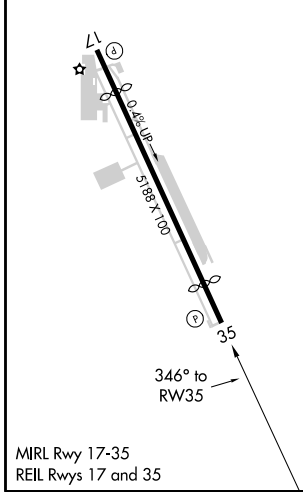
RNAV (GPS) RWY 35

YORK (THV)

RNP APCH.		MISSED APPROACH: Climb to 3300 direct WABEP and hold.	
<p>▼ Rwy 35 helicopter visibility reduction below ¾ SM NA. ▲ Circling Rwy 17 NA at night.</p>		ASOS 119.275	HARRISBURG APP CON 124.1 273.525
		CLNC DEL 121.65	UNICOM 123.0 (CTAF)



ELEV	495	TDZE	485
------	------------	------	------------



3300	WABEP	Visual Segment - Obstacles.			
		XOPPA	EZUMO	XOPPA	4 NM Holding Pattern
		HODET 2.9 NM to RW35	YOKRI		
		1.3 NM to RW35			
		RW35			
		1440	2000	2500	6000
		1.3 NM	1.6 NM	1.7 NM	3.3 NM
					3.8 NM
CATEGORY	A	B	C	D	
LNAV MDA	1080-1	595 (600-1)	1080-1¼	595 (600-1¼)	
CIRCLING	1220-1 725 (800-1)	1240-1 745 (800-1)	1260-2¼ 765 (800-2¼)	1260-2½ 765 (800-2½)	

NE-4, 07 OCT 2021 to 04 NOV 2021

NE-4, 07 OCT 2021 to 04 NOV 2021