

BITHO SEVEN ARRIVAL

ORLANDO, FLORIDA

ORLANDO APP CON
 128.375 338.2
 ISM ATIS
 128.775
 KCOF ATIS
 119.175 273.5
 MLB ATIS
 132.55
 MCO D-ATIS ARR
 121.25
 TIX ATIS
 120.625

ORMOND BEACH
 112.6 OMN
 Chan 73
 N29° 18.20' - W81° 06.76'
 L-21-23-24, H-8

LAMMA
 N29° 00.87' - W81° 05.38'
TURBOJET VERTICAL NAVIGATION
PLANNING INFORMATION

Expect clearance to cross at 15000' landing Patrick SFB, Melbourne Orlando Intl, and Merritt Island.
 Expect clearance to cross at 12000' landing Orlando Intl, Kissimmee Gateway, Space Coast Rgnl, Cape Canaveral SFS Skid Strip, and Space Florida Launch and Landing.
 NOTE: Orlando Intl Landing South: Expect clearance to cross at 250K.

OCALA
 113.7 OCF
 Chan 84

JESUP
 N28° 53.31' - W81° 04.78'

COZMO
 N28° 47.95' - W81° 04.36'
TURBOJET VERTICAL NAVIGATION
PLANNING INFORMATION

Expect clearance to cross at 10000' landing Orlando Intl Rwy 18.

ORLANDO
 112.2 ORL
 Chan 59

BITHO
 N28° 37.86' - W81° 03.56'
TURBOJET VERTICAL NAVIGATION
PLANNING INFORMATION

Expect clearance to cross at 8000' landing Space Florida Launch and Landing Facility, Cape Canaveral SFS Skid Strip, Merritt Island, Patrick SFB, and Melbourne Orlando Intl.

ORLANDO INTL

KISSIMMEE GATEWAY

SPACE FLORIDA LAUNCH AND LANDING FACILITY

SPACE COAST RGNL

CAPE CANAVERAL SFS SKID STRIP

MERRITT ISLAND

PATRICK SFB

MELBOURNE ORLANDO INTL

NOTE: Chart not to scale.

ARRIVAL ROUTE DESCRIPTION

From over OMN VORTAC via OMN R-176 to BITHO INT. Expect RADAR vectors to final approach course after BITHO INT.

SE-3, 22 FEB 2024 to 21 MAR 2024

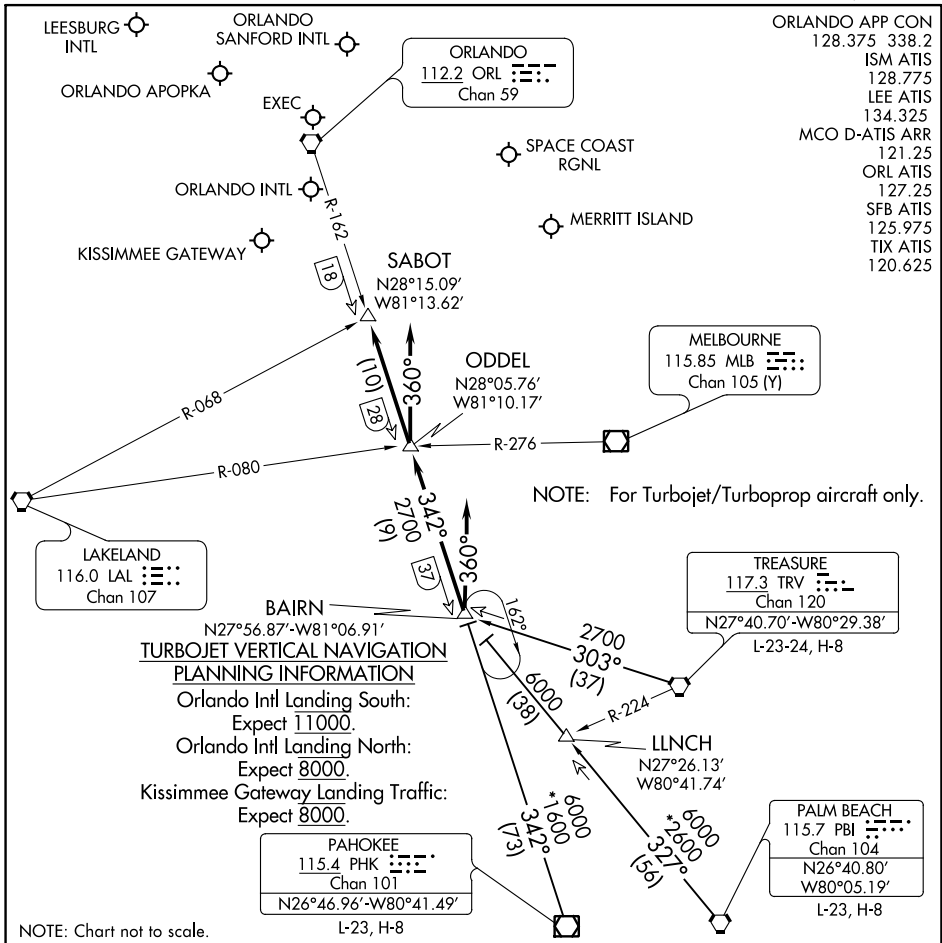
SE-3, 22 FEB 2024 to 21 MAR 2024

(BAIRN.GOOFY7) 23222

AL-571 (FAA)

GOOFY SEVEN ARRIVAL

ORLANDO, FLORIDA



SE-3, 22 FEB 2024 to 21 MAR 2024

SE-3, 22 FEB 2024 to 21 MAR 2024

ARRIVAL ROUTE DESCRIPTION

PAHOKEE TRANSITION (PHK.GOOFY7): From over PHK VOR/DME on PHK R-342 to BAIRN INT.

Thence . . .

PALM BEACH TRANSITION (PBI.GOOFY7): From over PBI VORTAC on PBI R-327 to BAIRN INT.

Thence . . .

TREASURE TRANSITION (TRV.GOOFY7): From over TRV VORTAC on TRV R-303 to BAIRN INT.

Thence . . .

ORLANDO INTL:

. . . Rwy 17/18: From over BAIRN INT on ORL VORTAC R-162 to ODDEL INT. Depart ODDEL INT heading 360° for vector to final approach course.

. . . Rwy 35/36: Depart BAIRN INT heading 360° for vector to final approach course.

LEESBURG INTL: . . . From over BAIRN INT on ORL VORTAC R-162 to SABOT INT. Expect RADAR vectors to the airport.

ALL OTHER AIRPORTS: . . . From over BAIRN INT on ORL VORTAC R-162 to SABOT INT.

Expect RADAR vectors to final approach course.

GOOFY SEVEN ARRIVAL

ORLANDO, FLORIDA

(BAIRN.GOOFY7) 27APR17

ORLANDO APP CON
134.05 339.8
ISM ATIS
128.775
LEE ATIS
134.325
MCO D-ATIS ARR
121.25
ORL ATIS
127.25
SFB ATIS
125.975
TIX ATIS
120.625

OCALA
113.7 OCF
Chan 84

ORLANDO
112.2 ORL
Chan 59
N28°32.56'
W81°20.10'

ANDRO
N28°02.95' - W81°53.14'
TURBOJET VERTICAL NAVIGATION PLANNING INFORMATION

Orlando Intl Landing South: Expect clearance to cross at 13,000'.
Orlando Intl Landing North: Expect clearance to cross at 13,000' and 250 KTS.

MOANS
N27°54.83' - W81°44.91'
TURBOJET VERTICAL NAVIGATION PLANNING INFORMATION

Orlando Intl Landing South: Expect clearance to cross at 13,000'.
Orlando Intl Landing North: Expect clearance to cross at 10,000' and 250 KTS.

ST PETERSBURG
116.4 PIE
Chan 111
N27°54.47'
W82°41.06'
L-21-24, H-8

SYKES
N27°39.88'
W83°02.99'

GUMMY
N27°49.59'
W82°31.94'

LAKELAND
116.0 LAL
Chan 107
N27°59.17'
W82°00.83'

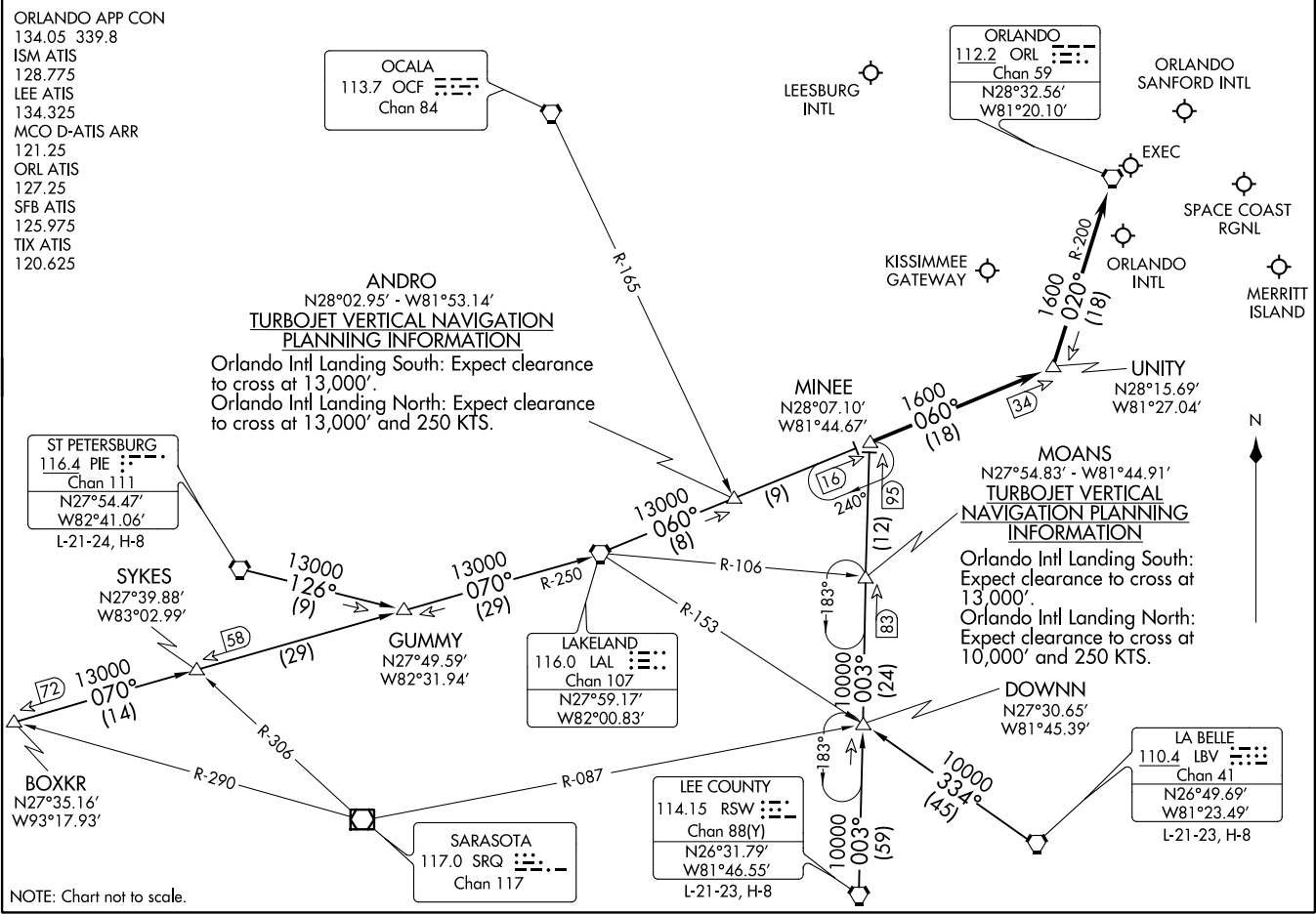
BOXKR
N27°35.16'
W93°17.93'

SARASOTA
117.0 SRQ
Chan 117

LEE COUNTY
114.15 RSW
Chan 88(Y)
N26°31.79'
W81°46.55'
L-21-23, H-8

LA BELLE
110.4 LBV
Chan 41
N26°49.69'
W81°23.49'
L-21-23, H-8

NOTE: Chart not to scale.



MINEE FIVE ARRIVAL (MINEE.MINEE5)

ORLANDO, FLORIDA

ARRIVAL ROUTE DESCRIPTION

BOXKR TRANSITION (BOXKR.MINEE5): From over BOXKR INT via LAL R-250 to LAL VORTAC, then via LAL R-060 to MINEE INT. Thence. . . .

LA BELLE TRANSITION (LBV.MINEE5): From over LBV VORTAC via LBV R-334 to DOWNN INT, then via RSW R-003 to MINEE INT. Thence. . . .

LEE COUNTY TRANSITION (RSW.MINEE5): From over RSW VORTAC via RSW R-003 to MINEE INT. Thence. . . .

ST. PETERSBURG TRANSITION (PIE.MINEE5): From over PIE VORTAC via PIE R-126 to GUMMY INT, then via LAL R-250 to LAL VORTAC, then via LAL R-060 to MINEE INT. Thence. . . .

. . . . From over MINEE INT via LAL R-060 to UNITY INT, then via ORL R-200 to ORL VORTAC.

LEESBURG INTL: Expect radar vectors to airport after UNITY INT.

ALL OTHER AIRPORTS: Expect radar vectors to final approach course after UNITY INT.

SE-3, 22 FEB 2024 to 21 MAR 2024

SE-3, 22 FEB 2024 to 21 MAR 2024