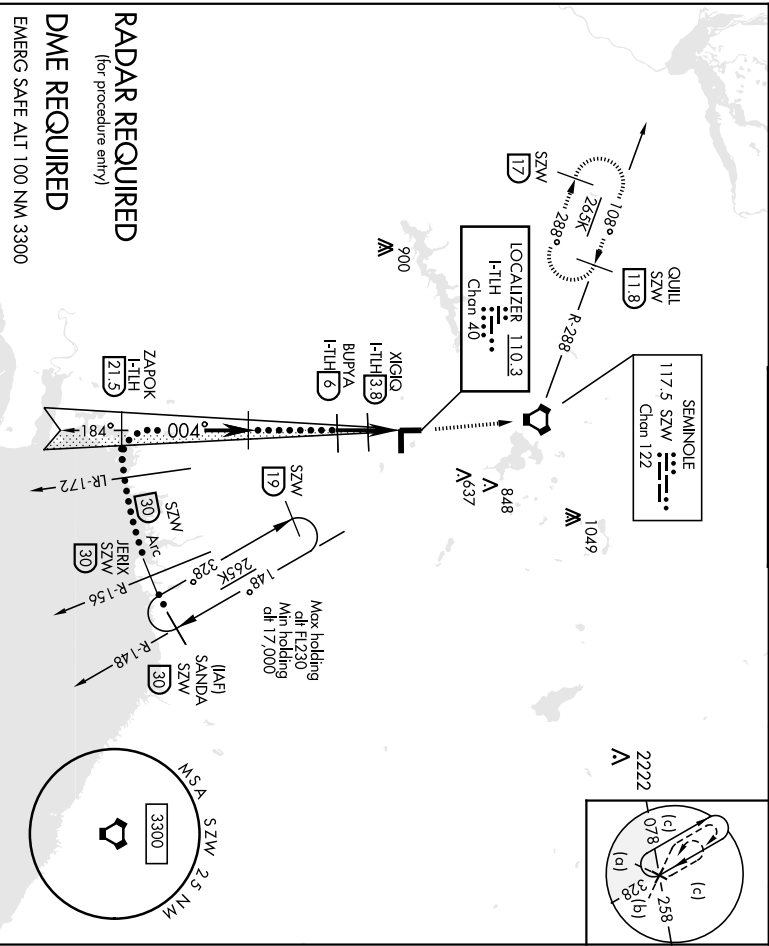


LOC/DME I-TIH 110.3 Chon 40	APCH CRS 004°	Rwy Idg TDZE App'l Elev 62 83	JAL-5048 (USAf)	MAISR MISSED APPROACH: Climb to 4000 direct SZW VOR/TAC then on SZW R-288 to QUILL/SZW 11.8 DME and hold.
** When AIS mpp, increase CAT E RVR to 40. RVR 18 authorized with use of FD or AP or HUD to DA ** When AIS mpp, increase CAT CDE RVR to 60.		TALLAHASSEE TOWER * 118.7 (CTAF) 257.8	GND CON 121.9 348.6	CINCL DEL 126.65 275.8
ATIS 119.45 239.25	TALLAHASSEE APP CON 135.8 317.4	TALLAHASSEE TOWER * 118.7 (CTAF) 257.8	GND CON 121.9 348.6	CINCL DEL 126.65 275.8
		ASR		



4000	SZW R-288	QUILL I-TIH 11.3	ZAPOK I-TIH 21.5	JERIX SZW R-148 30	SANDIA SZW R-148 30	ELEV 83	TDZE 62
VGSJ and ILS glidepath not coincident (VGSJ angle 3.00/53).						HIRL Rwy 9-27, 18-36 REIL Rwy 9, 18 TDZL/CL Rwy 27	
CATEGORY	C	D	E				
S-LS 36 *	262/24	200 (200-1/2)					
S-LOC 36 ***	460/40	398 (400-3/4)					
DIRCLING	640-1 1/2 557 (600-1 1/2)	800-2 1/4 717 (800-2 1/4)		1000-3 917 (1000-3)			

TALLAHASSEE FLORIDA

Andr 5D 15AUG19

30° 24' N-84° 21' W

TALLAHASSEE INTL (KTLH)

HILLS or LOC Rwy 36

HI-VOR or TACAN Rwy 36

TALLAHASSEE, FLORIDA

JAL-5048 USAFI

TALLAHASSEE INTL (KTLH)

VORTAC SZW Chon 122	APCH CRS 353° Arpt Elev 83	Rwy Idg 7000 TDZE 62
------------------------	----------------------------------	-------------------------------

DME required. RADAR required for procedure entry.
* When ALS Inop, increase CAT CDE vis to 1/2 miles.

MAISR

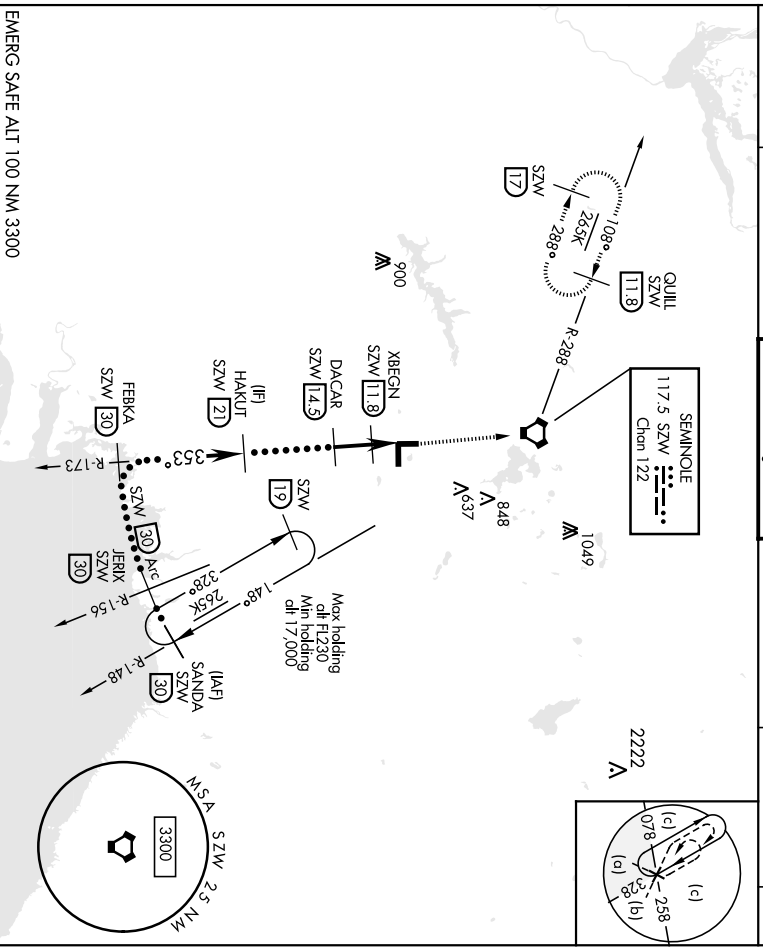
 MISSED APPROACH: Climb to 4000 direct SZW VORTAC then on R-288 to QUIL/11.8 DME and hold.

ATIS 119.45 239.25	TALLAHASSEE APP CON 156.8 317.4	TALLAHASSEE TOWER * 118.7 (TA)F/257.8
-----------------------	------------------------------------	--

GND CON 121.9 348.6

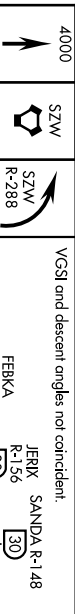
CINC DEL 126.65 275.8

ASR

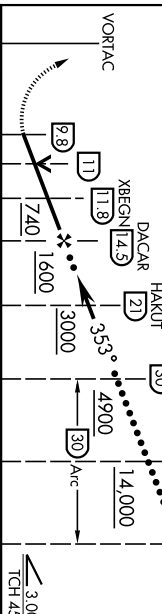


EMERG SAFE ALT 100 NM 3300

VGSI and descent angles not coincident.



ELEV 83	TDZE 62
HIRL Rwy 9-27, 1.8-3.6	REIL Rwy 9, 1.8
TDZL/CL Rwy 27	



CATEGORY	C	D	E
S-36 *	500/45 438 (500-74)	800-21/4 717 (800-214)	1000-3 917 (1000-31)
CIRCLING	640-11/2 557 (600-11/2)	800-21/4 717 (800-214)	1000-3 917 (1000-31)

TALLAHASSEE, FLORIDA

30°24'N-84°21'W

TALLAHASSEE INTL (KTLH)

Amth 3D 13AUG20

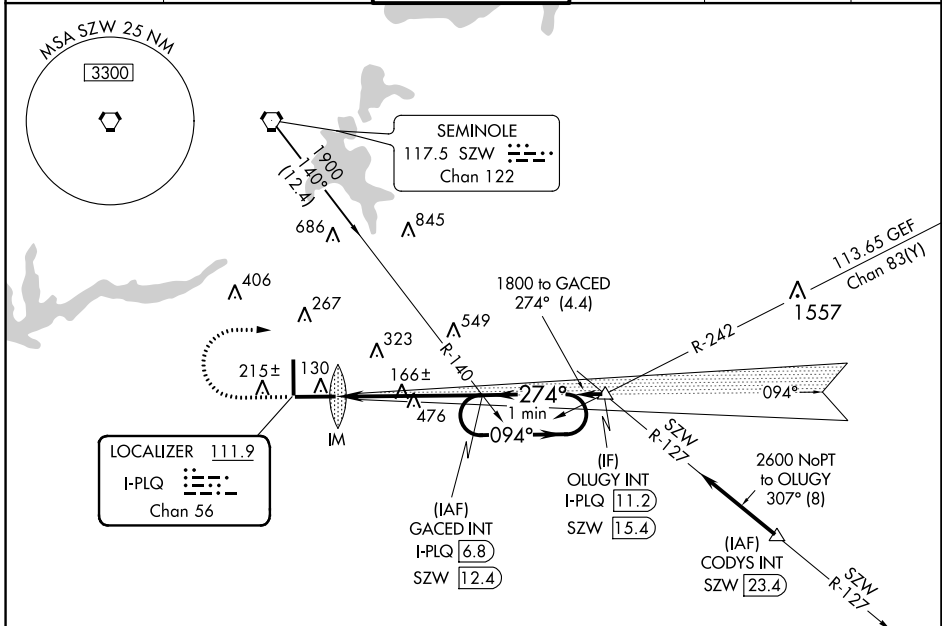
HI-VOR or TACAN Rwy 36

LOC/DME I-PLQ 111.9 Chan 56	APP CRS 274°	Rwy Idg TDZE Apt Elev	8000 58 83
---	------------------------	-----------------------------	---------------------------------------

ILS RWY 27 (CAT II)

TALLAHASSEE INTL (TLH)

DME required.		ALSF-2	MISSED APPROACH: Climb to 2000 then climbing right turn to 4000 on heading 092° and on SZW VORTAC R-140 to GACED INT/SZW 12.4 DME and hold, continue climb-in-hold to 4000.		
S-ILS 27 NA when control tower closed. ASR					
ATIS 119.45 239.25	TALLAHASSEE APP CON * 135.8 317.4	TALLAHASSEE TOWER * 118.7 (CTAF) 257.8	GND CON 121.9 348.6	CLNC DEL 126.65 275.8	UNICOM 123.075



ELEV 83	TDZE 58
---------	---------

81

7000 X 150

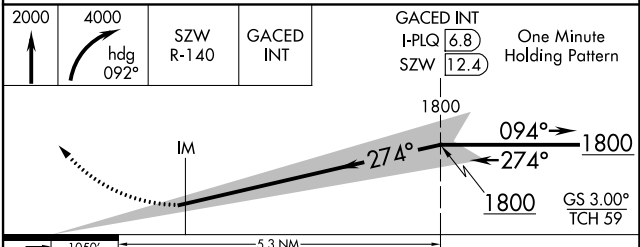
0.4% UP

36

8000 X 150

0.3% UP

TWR 203



CATEGORY	A	B	C	D
S-ILS 27	RA 114/12 100 DA 158			

CATEGORY II ILS - SPECIAL AIRCREW & AIRCRAFT CERTIFICATION REQUIRED

TDZ/CL Rwy 27
REIL Rwys 9 and 18
HIRL Rwys 9-27 and 18-36

SE-3, 22 FEB 2024 to 21 MAR 2024

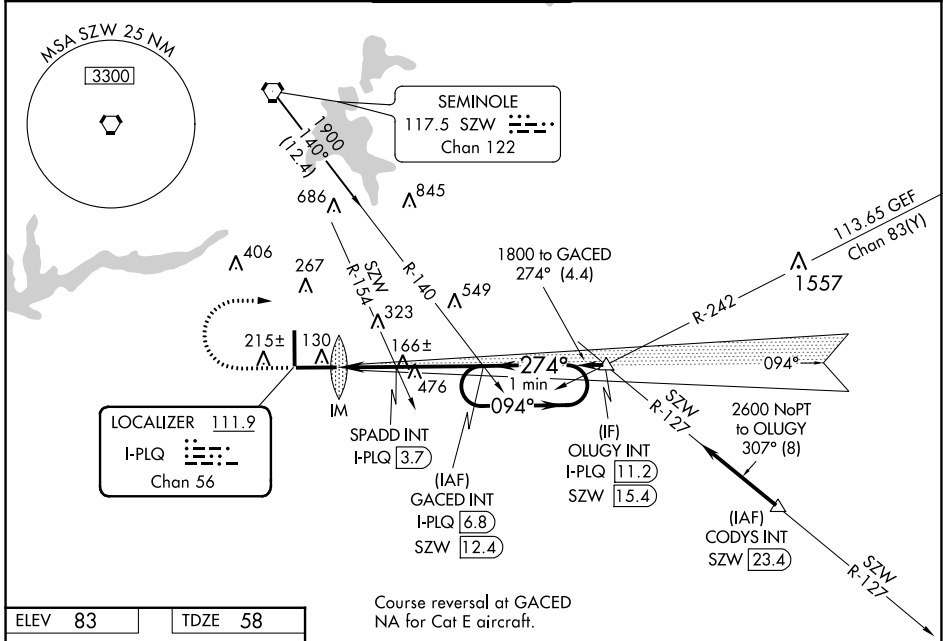
SE-3, 22 FEB 2024 to 21 MAR 2024

LOC/DME I-PLQ 111.9 Chan 56	APP CRS 274°	Rwy Idg 8000
	TDZE 58	
	Apt Elev 83	

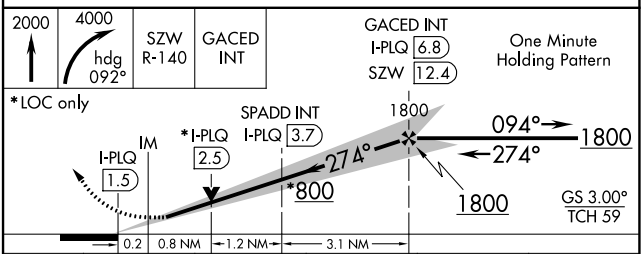
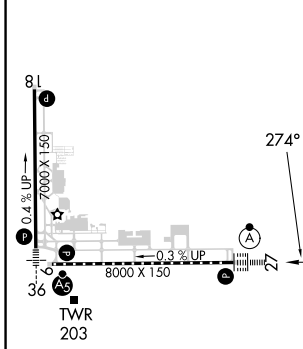
ILS or LOC RWY 27

TALLAHASSEE INTL (TLH)

DME required.	ALS5-2	MISSED APPROACH: Climb to 2000 then climbing right turn to 4000 on heading 092° and on SZW VORTAC R-140 to GACED INT/SZW 12.4 DME and hold, continue climb-in-hold to 4000.			
<p>▼ For inop ALS, increase S-ILS 27 Cat E visibility to RVR 4000 and S-LOC 27 Cats C, D and E visibility to 2 SM. SPADD FIX MINIMUMS increase S-LOC 27 Cats C, D and E visibility to RVR 5500.</p> <p>▲ ASR</p>					
ATIS 119.45 239.25	TALLAHASSEE APP CON ★ 135.8 317.4	TALLAHASSEE TOWER ★ 118.7 (CTAF) 257.8	GND CON 121.9 348.6	CLNC DEL 126.65 275.8	UNICOM 123.075



ELEV 83	TDZE 58
---------	---------



CATEGORY	A	B	C	D	E
S-ILS 27	258/18 200 (200-½)				
S-LOC 27	800/24 742 (800-½)	800/40 742 (800-¾)	800-1¾ 742 (800-1¾)		
CIRCLING	800-1 717 (800-1)	800-1¼ 717 (800-1¼)	800-2 717 (800-2)	800-2¼ 717 (800-2¼)	1000-3 917 (1000-3)
SPADD FIX MINIMUMS					
S-LOC 27	420/24	362 (400-½)	420/35 362 (400-¾)		
CIRCLING	580-1 497 (500-1)	600-1 517 (600-1)	640-1½ 557 (600-1½)	800-2¼ 717 (800-2¼)	1000-3 917 (1000-3)

TDZ/CL Rwy 27
REIL Rwy 9 and 18
HIRL Rwy 9-27 and 18-36

FAF to MAP 5.3 NM

Knots	60	90	120	150	180
Min:Sec	5:18	3:32	2:39	2:07	1:46

SE-3, 22 FEB 2024 to 21 MAR 2024

SE-3, 22 FEB 2024 to 21 MAR 2024

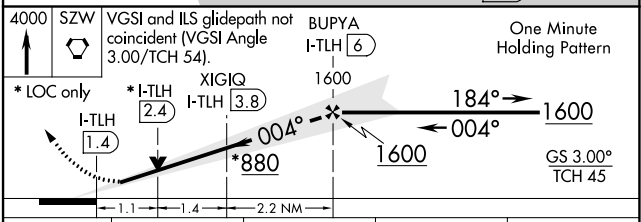
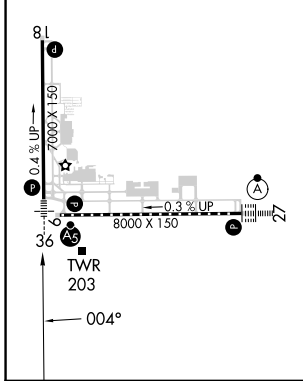
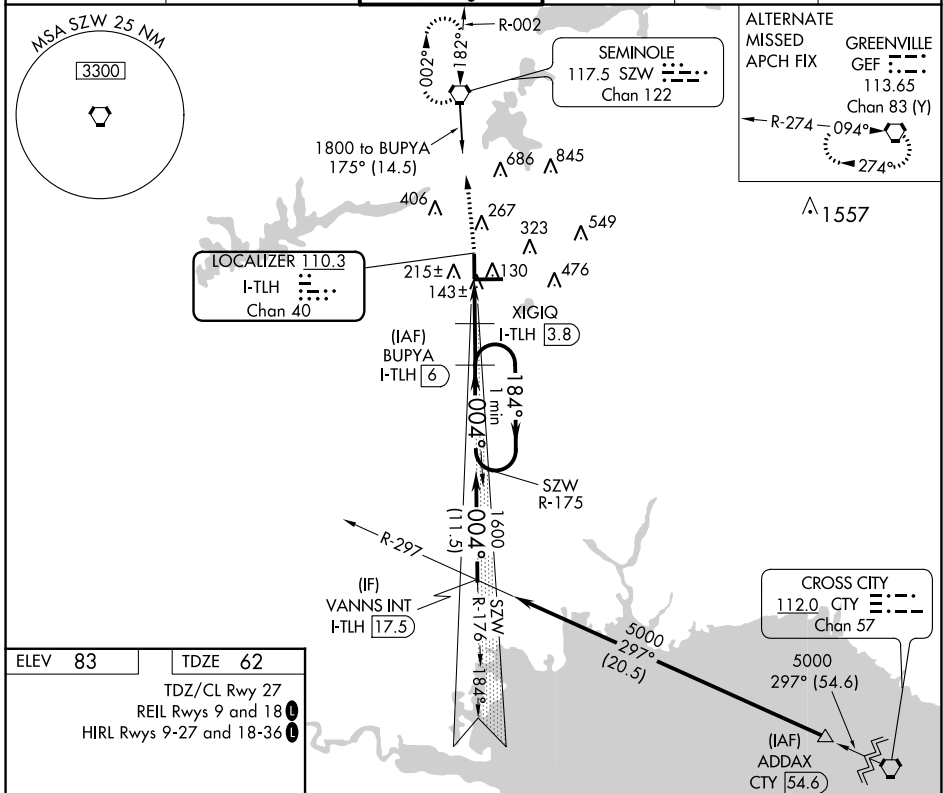
LOC/DME I-TLH 110.3 Chan 40	APP CRS 004°	Rwy Idg TDZE Apt Elev	7000 62 83
--	------------------------	-----------------------------	---------------------------------------

ILS or LOC RWY 36

TALLAHASSEE INTL (TLH)

DME required.	MALSR	MISSED APPROACH: Climb to 4000 direct SZW VORTAC and hold, continue climb-in-hold to 4000.
<p>For inop ALS, increase S-LOC 36 Cats C/D visibility to RVR 6000. ** RVR 1800 authorized with use of FD or AP or HUD to DA.</p>		

ATIS 119.45 239.25	TALLAHASSEE APP CON* 135.8 317.4	TALLAHASSEE TOWER* 118.7(CTAF) 0 257.8	GND CON 121.9 348.6	CLNC DEL 126.65 275.8	UNICOM 123.075
------------------------------	--	--	-------------------------------	---------------------------------	--------------------------



CATEGORY	A	B	C	D
S-ILS 36 **	262/24		200 (200-1/2)	
S-LOC 36	460/24	398 (400-1/2)	460/40	398 (400-3/4)
CIRCLING	580-1 497 (500-1)	600-1 517 (600-1)	640-1 1/2 557 (600-1 1/2)	800-2 1/4 717 (800-2 1/4)

SE-3, 22 FEB 2024 to 21 MAR 2024

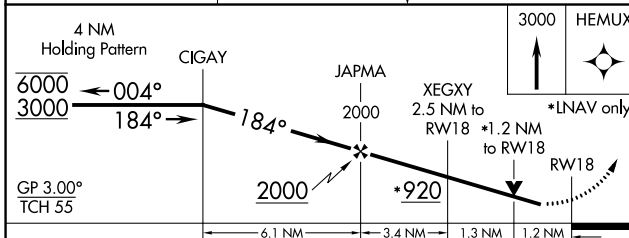
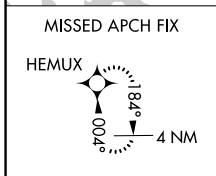
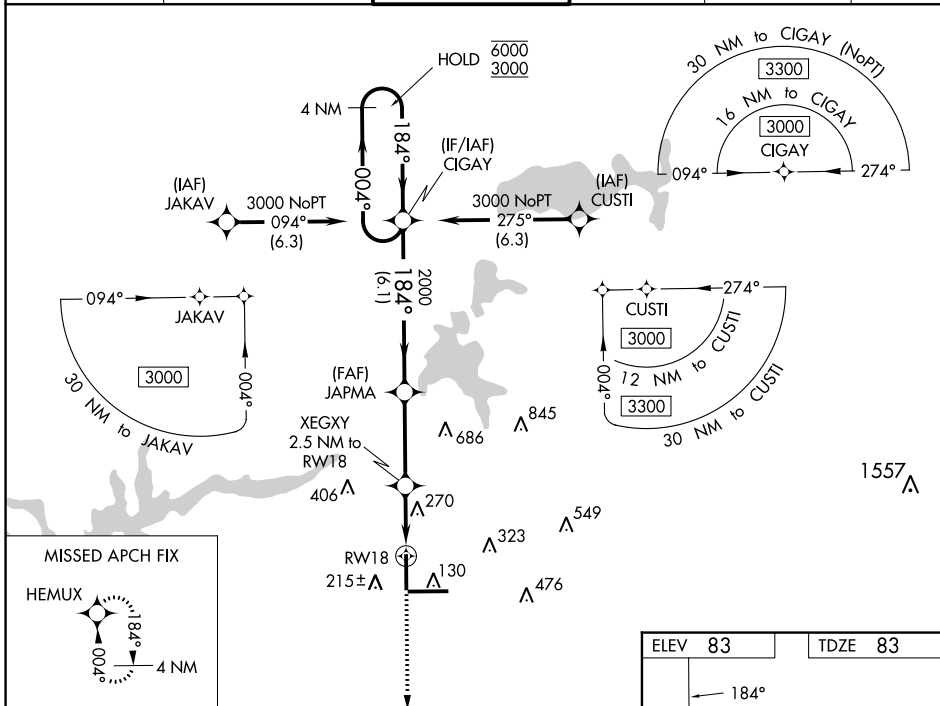
SE-3, 22 FEB 2024 to 21 MAR 2024

WAAS CH 65600 W18A	APP CRS 184°	Rwy Idg TDZE 83 Apt Elev 83	7000
--	------------------------	---	-------------

RNAV (GPS) RWY 18

TALLAHASSEE INTL (TLH)

RNP APCH.		TALLAHASSEE APP CON *		TALLAHASSEE TOWER *		GND CON		CLNC DEL		UNICOM					
Rwy 18 helicopter visibility reduction below 3/4 SM NA. For uncompensated Baro-VNAV systems, LNAV/VNAV NA below -5°C or above 54°C.		MISSED APPROACH: Climb to 3000 direct HEMUX and hold.		119.45 239.25		135.8 317.4		118.7 (CTAF) 257.8		121.9 348.6		126.65 275.8		123.075	



CATEGORY	A	B	C	D
LPV DA		333-3/4	250 (300-3/4)	
LNAV/VNAV DA		537-1 1/2	454 (500-1 1/2)	
LNAV MDA	520-1	437 (500-1)	520-1 1/4	437 (500-1 1/4)
CIRCLING	580-1 497 (500-1)	600-1 517 (600-1)	640-1 1/2 557 (600-1 1/2)	800-2 1/4 717 (800-2 1/4)

TDZ/CL Rwy 27
 REIL Rwys 9 and 18
 HIRL Rwys 9-27 and 18-36

SE-3, 22 FEB 2024 to 21 MAR 2024

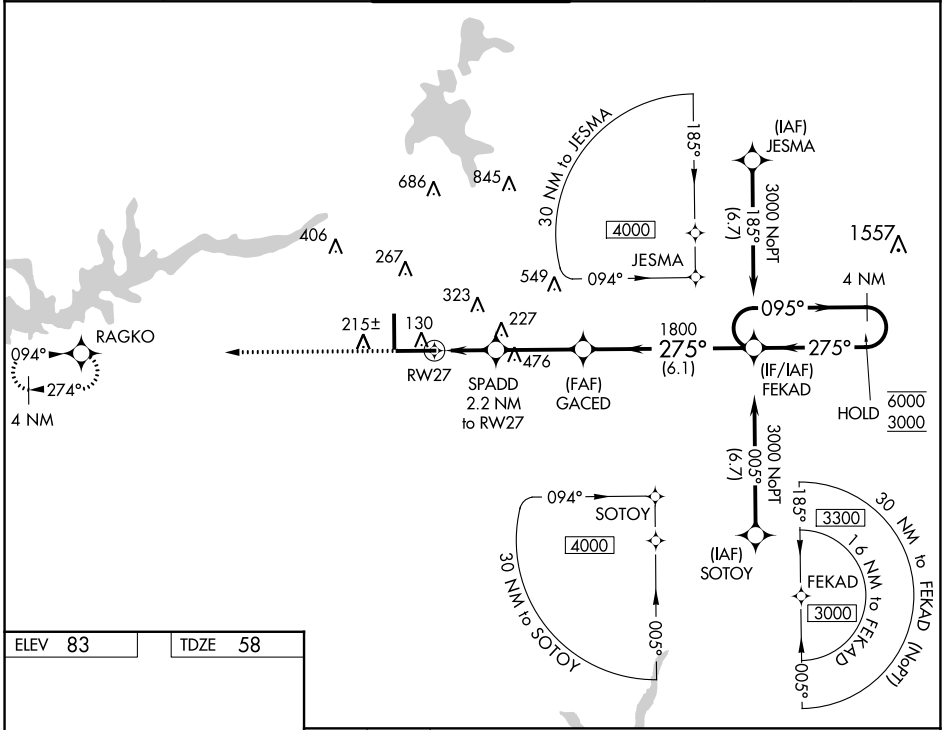
SE-3, 22 FEB 2024 to 21 MAR 2024

WAAS CH 97302 W27A	APP CRS 275°	Rwy Idg TDZE 58 Apt Elev 83
--	------------------------	---

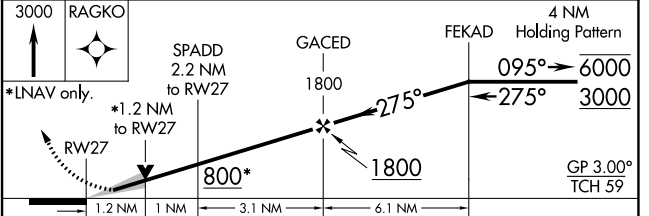
RNAV (GPS) RWY 27

TALLAHASSEE INTL (TLH)

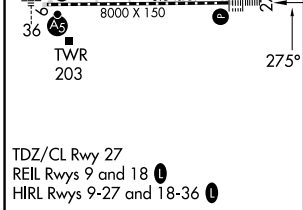
RNP APCH. ▼ For uncompensated Baro-VNAV systems, LNAV/VNAV ▲ NA below -5°C or above 54°C. ASR		ALSF-2 ▲	MISSED APPROACH: Climb to 3000 direct RAGKO and hold.		
ATIS 119.45 239.25	TALLAHASSEE APP CON ★ 135.8 317.4	TALLAHASSEE TOWER ★ 118.7 (CTAF) 0 257.8	GND CON 121.9 348.6	CLNC DEL 126.65 275.8	UNICOM 123.075



ELEV 83	TDZE 58
---------	---------



CATEGORY	A	B	C	D
LPV DA		258/18	200 (200-½)	
LNAV/VNAV DA		375/30	317 (300-¾)	
LNAV MDA	480/24	422 (400-½)	480/40	422 (400-¾)
CIRCLING	580-1 497 (500-1)	600-1 517 (600-1)	640-1½ 557 (600-1½)	800-2¼ 717 (800-2¼)



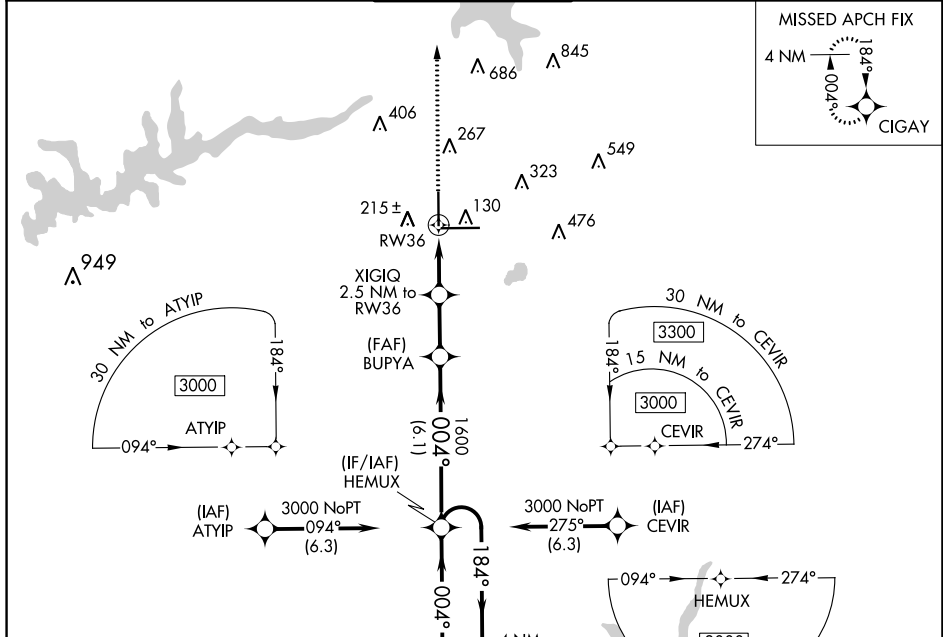
WAAS CH 60900 W36A	APP CRS 004°	Rwy Idg 7000 TDZE 62 Apt Elev 83
--	------------------------	---

RNAV (GPS) RWY 36

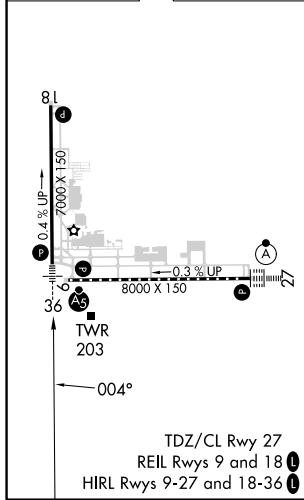
TALLAHASSEE INTL (TLH)

<p>For uncompensated Baro-VNAV systems, LNAV/VNAV NA below -7°C (20°F) or above 54°C (130°F). DME/DME RNP-0.3 NA. **RVR 1800 authorized with use of FD or AP or HUD to DA.</p>	<p>MALS</p>	<p>MISSED APPROACH: Climb to 3000 direct CIGAY and hold.</p>
	<p>ASR</p>	

ATIS 119.45 239.25	TALLAHASSEE APP CON * 135.8 317.4	TALLAHASSEE TOWER * 118.7 (CTAF) 0 257.8	GND CON 121.9 348.6	CLNC DEL 126.65 275.8	UNICOM 123.075
------------------------------	---	--	-------------------------------	---------------------------------	--------------------------



ELEV 83	TDZE 62
---------	---------



3000	CIGAY	VGSI and RNAV glidepath not coincident (VGSI Angle 3.00/TCH 54).	4 NM	
*LNAV only.		BUPYA 1600	HEMUX Holding Pattern	
XIGIQ 2.5 NM to RW36	*1.1 NM to RW36	1600	184° → 3000	
RW36	1.1 NM	1.4 NM	← 004°	
	2.2 NM	6.1 NM	GP 3.00° TCH 45	
CATEGORY	A	B	C	D
LPV DA **	262/24		200 (200-½)	
LNAV/VNAV DA	364/24		302 (300-½)	
LNAV MDA	460/24	398 (400-½)	460/35	398 (400-½)
<input checked="" type="checkbox"/> CIRCLING	580-1 497 (500-1)	600-1 517 (600-1)	640-1½ 557 (600-1½)	800-2¼ 717 (800-2¼)

SE-3, 22 FEB 2024 to 21 MAR 2024

SE-3, 22 FEB 2024 to 21 MAR 2024

WAAS CH 45503 W09A	APP CRS 094°	Rwy Idg TDZE 66 Apt Elev 83	8000
--	------------------------	---	-------------

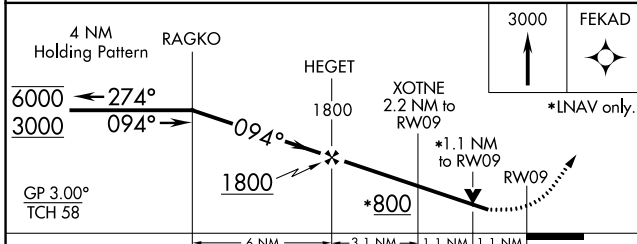
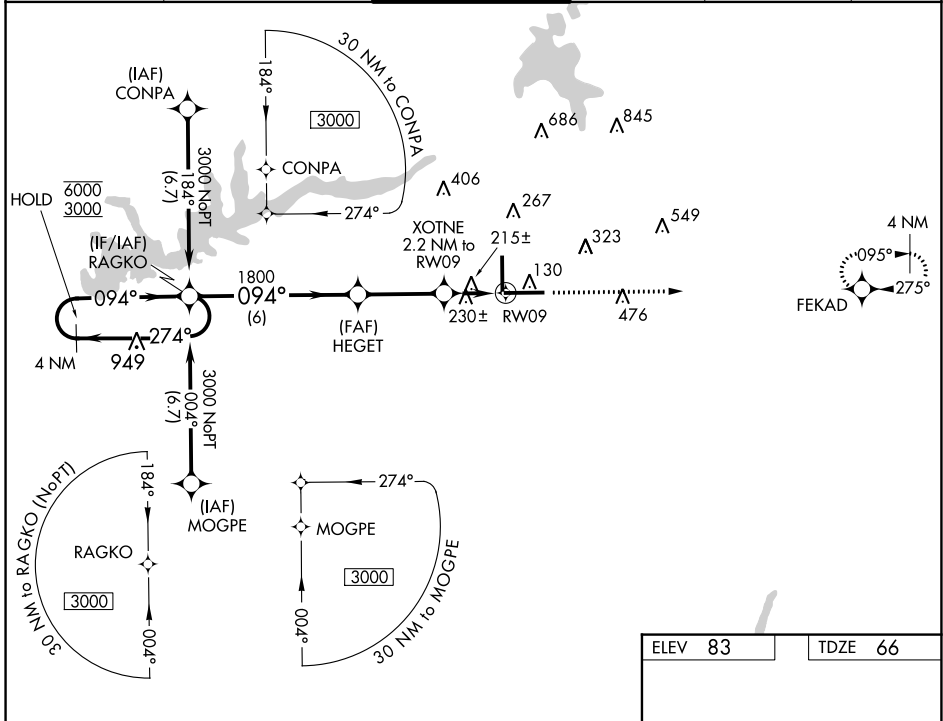
RNAV (GPS) RWY 9

TALLAHASSEE INTL (TLH)

RNP APCH.
 ▼ Rwy 9 helicopter visibility reduction below RVR 4000 NA.
 ▲ For uncompensated Baro-VNAV systems, LNAV/VNAV NA below -5°C or above 54°C.

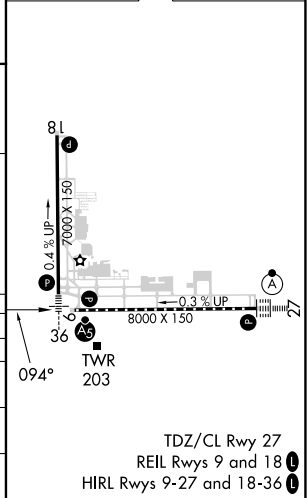
MISSED APPROACH: Climb to 3000 direct FEKAD and hold.

ATIS 119.45 239.25	TALLAHASSEE APP CON * 135.8 317.4	TALLAHASSEE TOWER * 118.7 (CTAF) 257.8	GND CON 121.9 348.6	CLNC DEL 126.65 275.8	UNICOM 123.075
------------------------------	---	---	-------------------------------	---------------------------------	--------------------------



ELEV 83	TDZE 66
----------------	----------------

CATEGORY	A	B	C	D
LPV DA		401/60	335 (400-1¼)	
LNAV/VNAV DA		447-1¼	381 (400-1¼)	
LNAV MDA	480/55	414 (400-1)	480/60	414 (400-1¼)
CIRCLING	580-1 497 (500-1)	600-1 517 (600-1)	640-1½ 557 (600-1½)	800-2¼ 717 (800-2¼)



TDZ/CL Rwy 27
REIL Rwy 9 and 18
HIRL Rwy 9-27 and 18-36

SE-3, 22 FEB 2024 to 21 MAR 2024

SE-3, 22 FEB 2024 to 21 MAR 2024

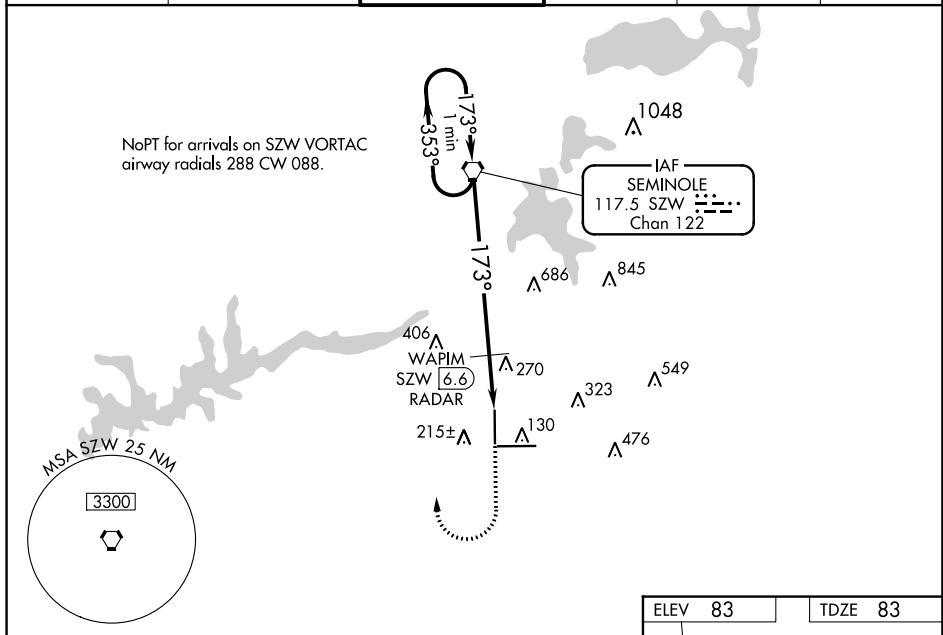
VORTAC SZW 117.5 Chan 122	APP CRS 173°	Rwy Idg 7000 TDZE 83 Apt Elev 83
---	------------------------	---

VOR RWY 18

TALLAHASSEE INTL (TLH)

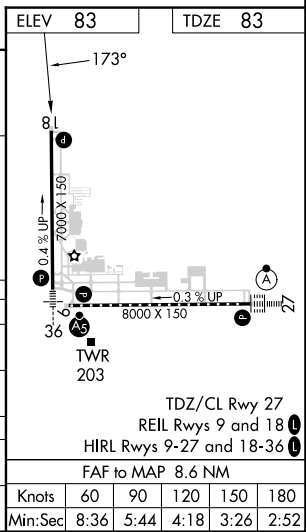
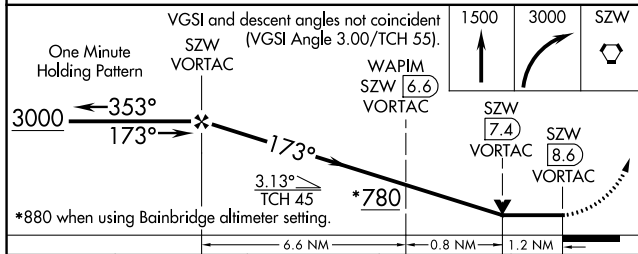
ASR Helicopter visibility reduction below 3/4 SM NA. VDP NA with Bainbridge altimeter setting.	MISSED APPROACH: Climb to 1500 then climbing right turn to 3000 direct SZW VORTAC and hold.
--	---

ATIS 119.45 239.25	TALLAHASSEE APP CON * 135.8 317.4	TALLAHASSEE TOWER * 118.7 (CTAF) 0 257.8	GND CON 121.9 348.6	CLNC DEL 126.65 275.8	UNICOM 123.075
------------------------------	---	--	-------------------------------	---------------------------------	--------------------------



SE-3, 22 FEB 2024 to 21 MAR 2024

SE-3, 22 FEB 2024 to 21 MAR 2024



CATEGORY	A	B	C	D
S-18	780-1 697 (700-1)		780-2 697 (700-2)	
CIRCLING	780-1 697 (700-1)		780-2 697 (700-2)	800-2 1/4 717 (800-2 1/4)
WAPIM FIX MINIMUMS				
S-18	540-1 457 (500-1)		540-1 3/8 457 (500-1 3/8)	
CIRCLING	580-1 497 (500-1)	600-1 517 (600-1)	640-1 1/2 557 (600-1 1/2)	800-2 1/4 717 (800-2 1/4)

Knots	60	90	120	150	180
Min:Sec	8:36	5:44	4:18	3:26	2:52

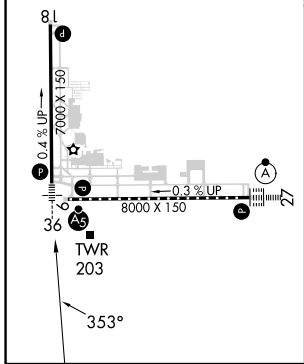
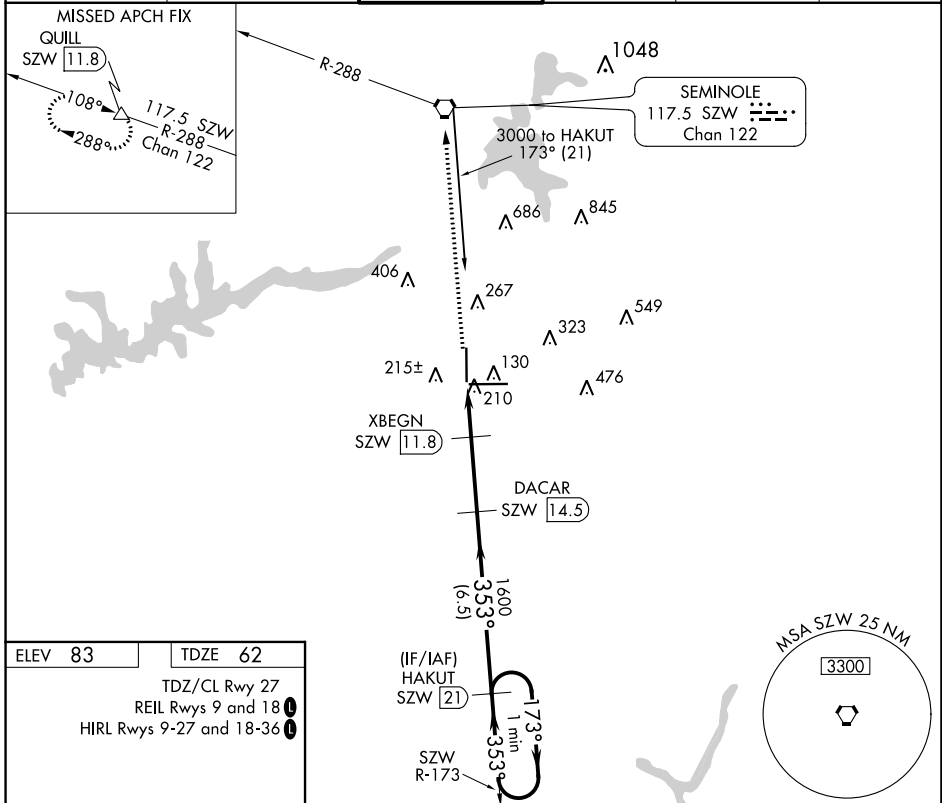
VORTAC SZW 117.5 Chan 122	APP CRS 353°	Rwy Idg TDZE Apt Elev	7000 62 83
---	------------------------	-----------------------------	---------------------------------------

VOR/DME or TACAN RWY 36

TALLAHASSEE INTL (TLH)

For inoperative MALS/R, increase S-36 Cats A/B visibility to 1 mile and Cat E to 1 3/8 mile. Visibility reduction by helicopters NA. ASR		MISSED APPROACH: Climb to 4000 direct SZW VORTAC then on SZW VORTAC R-288 to QUILL/SZW 11.8 DME and hold.		

ATIS 119.45 239.25	TALLAHASSEE APP CON* 135.8 317.4	TALLAHASSEE TOWER* 118.7(CTAF) 257.8	GND CON 121.9 348.6	CLNC DEL 126.65 275.8	UNICOM 123.075
------------------------------	--	--	-------------------------------	---------------------------------	--------------------------



4000 SZW	QUILL	VGSI and descent angles not coincident (VGSI Angle 3.00/TCH 54). HAKUT			
SZW R-288		One Minute Holding Pattern			
XBEGN SZW 11.8	DACAR SZW 14.5	SZW 21			
SZW 9.8	SZW 11	173° → 3000			
		353° ← 353°			
		740			
		1600			
		1.3 0.8 NM 2.6 NM 6.5 NM			
CATEGORY	A	B	C	D	E
S-36	500/40	438 (500-3/4)	500/45	438 (500-7/8)	
CIRCLING	580-1 497 (500-1)	600-1 517 (600-1)	640-1 1/2 557 (600-1 1/2)	800-2 1/4 717 (800-2 1/4)	1000-3 917 (1000-3)

VOR/DME or TACAN RWY 36

SE-3, 22 FEB 2024 to 21 MAR 2024

SE-3, 22 FEB 2024 to 21 MAR 2024