

WAAS CH 99626 W18A	APP CRS 176°	Rwy Idg 3907 TDZE 757 Apt Elev 758
--	------------------------	---

RNAV (GPS) RWY 18

TRENTON MUNI (TRX)

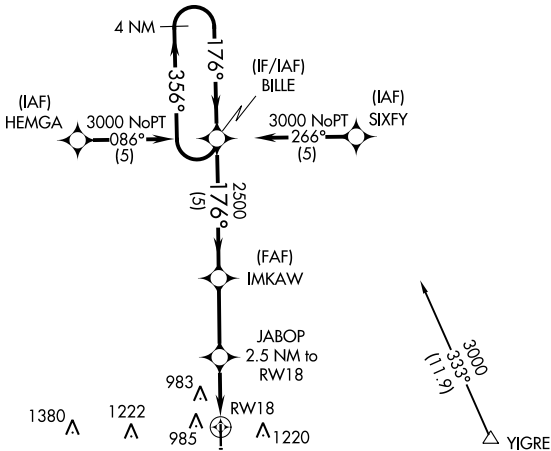
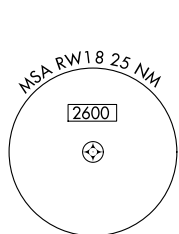
Baro-VNAV NA. Use Chillicothe altimeter setting; when not received, use Kirksville altimeter setting and increase LPV DA to 1191 feet and all visibilities $\frac{3}{8}$ SM, LNAV/VNAV DA to 1341 feet and all visibilities $\frac{1}{4}$ SM; increase all MDAs 100 feet and Circling Cat B visibility $\frac{1}{4}$ SM. DME/DME RNP-0.3 NA. Helicopter visibility reduction below $\frac{3}{4}$ SM NA.

MISSED APPROACH: Climb to 3000 direct HISTU and hold.

KANSAS CITY CENTER
125.25 235.975

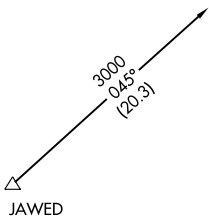
UNICOM
122.8 (CTAF) 0

1476

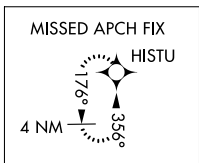


NC-3, 22 FEB 2024 to 21 MAR 2024

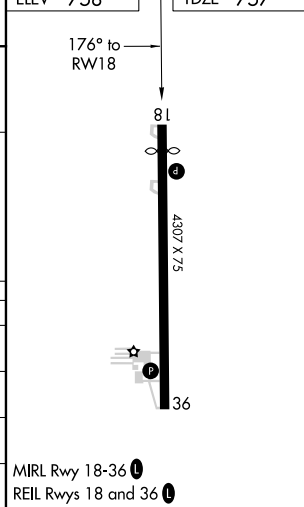
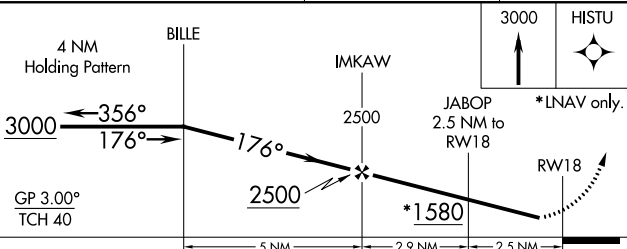
NC-3, 22 FEB 2024 to 21 MAR 2024



Procedure NA for arrivals at JAWED on V13-161 southbound.



ELEV 758	TDZE 757
----------	----------



CATEGORY	A	B	C	D
LPV DA	1098-1 $\frac{1}{8}$	341 (400-1 $\frac{1}{8}$)		NA
LNAV/VNAV DA	1248-1 $\frac{3}{4}$	491 (500-1 $\frac{3}{4}$)		NA
LNAV MDA	1180-1	423 (500-1)		NA
CIRCLING	1340-1 582 (600-1)	1700-1 $\frac{1}{4}$ 942 (1000-1 $\frac{1}{4}$)		NA

WAAS CH 63126 W36A	APP CRS 356°	Rwy Idg 4307 TDZE 757 Apt Elev 758
--	------------------------	---

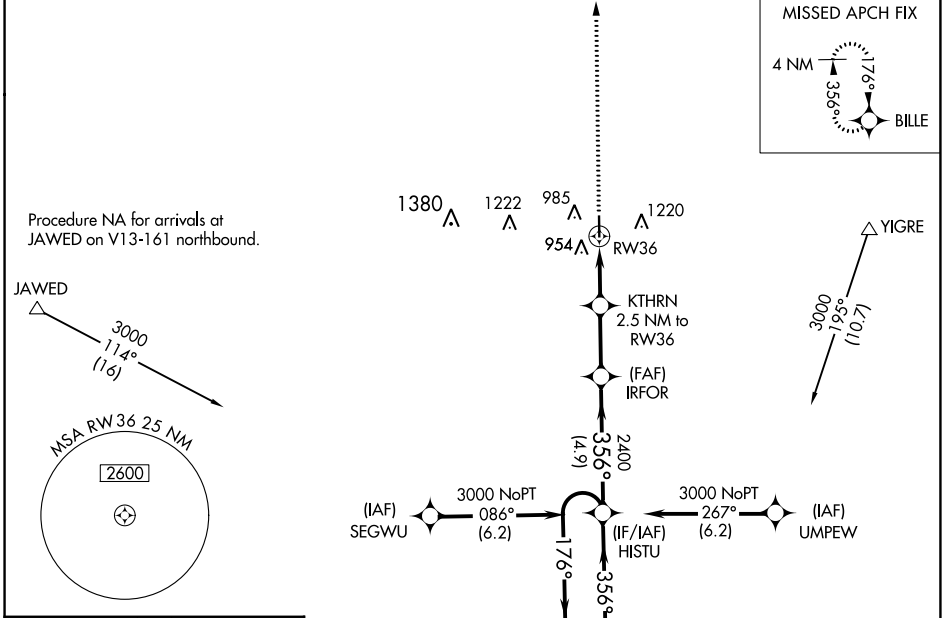
RNAV (GPS) RWY 36

TRENTON MUNI (TRX)

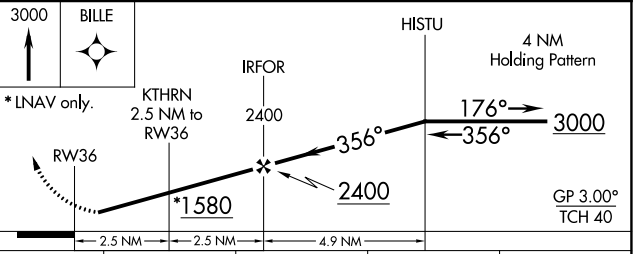
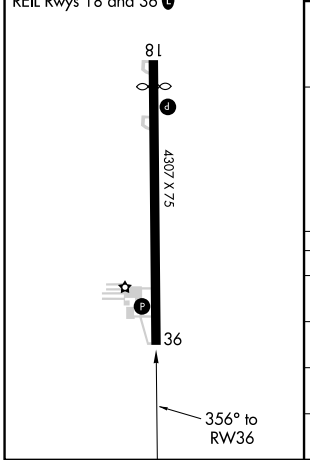
▽ When VGSI inop, Circling Rwy 18 NA at night. Baro-VNAV NA. Use Chillicothe altimeter setting; when not received, use Kirksville altimeter setting and increase LPV DA to 1175 feet and all visibilities ¼ SM, LNAV/VNAV DA to 1288 feet and all visibilities ⅓ SM; increase all MDAs 100 feet and Circling Cat B visibility ¼ SM. DME/DME RNP-0.3 NA. Visibility reduction by helicopters NA.

△ NA MISSED APPROACH: Climb to 3000 direct BILLE and hold.

KANSAS CITY CENTER 125.25 235.975	UNICOM 122.8 (CTAF) ①
---	---------------------------------



ELEV 758	TDZE 757
----------	----------



CATEGORY	A	B	C	D
LPV DA	1082-1⅛	325 (400-1⅛)		NA
LNAV/DA VNAV	1195-1½	438 (500-1½)		NA
LNAV MDA	1320-1	563 (600-1)		NA
CIRCLING	1340-1 582 (600-1)	1700-1¼ 942 (1000-1¼)		NA

NC-3, 22 FEB 2024 to 21 MAR 2024

NC-3, 22 FEB 2024 to 21 MAR 2024