

LOC I-BUZ <b>111.7</b>	APP CRS <b>037°</b>	Rwy Idg TDZE Apt Elev	<b>5500</b> <b>904</b> <b>904</b>
---------------------------	------------------------	-----------------------------	---

# ILS or LOC RWY 4

BOLTON FLD (TZR)

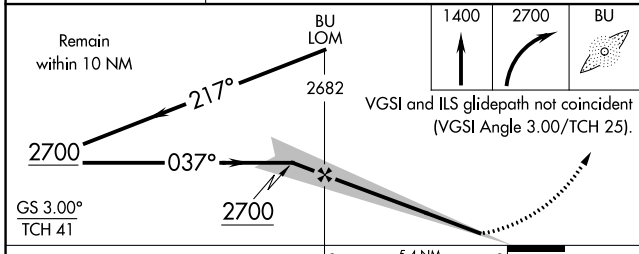
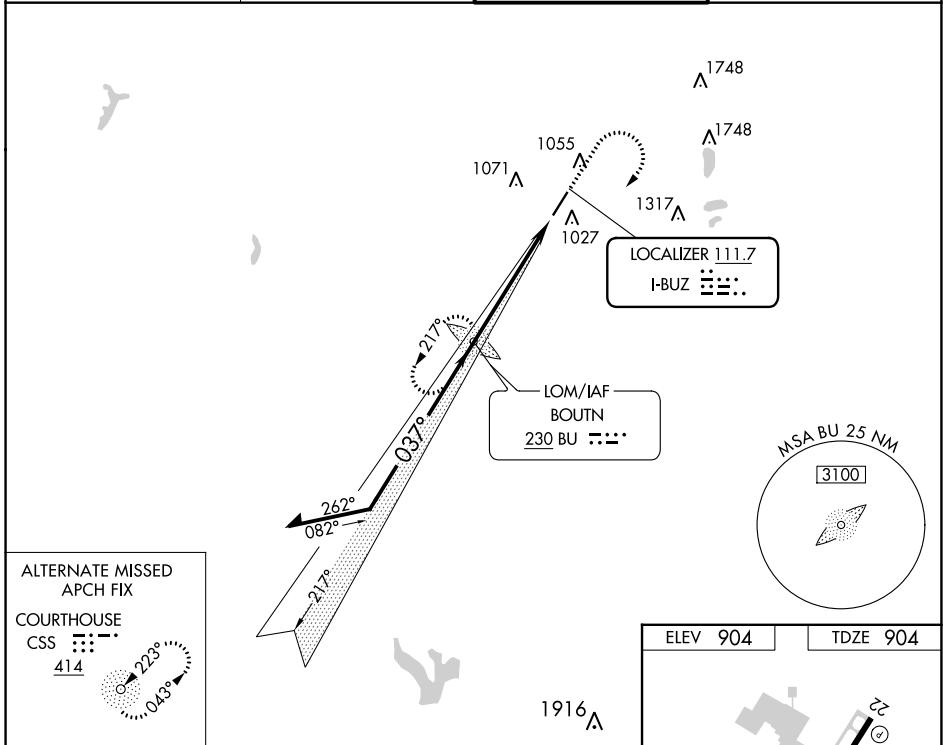
ADF required.  
RADAR required for procedure entry.

▼ AutoPilot coupled approach NA below 1144.

MALSR

MISSED APPROACH: Climb to 1400 then climbing right turn to 2700 direct BU LOM and hold.

AWOS-3PT <b>135.925</b>	COLUMBUS APP CON <b>134.0 279.6</b>	BOLTON TOWER ★ <b>128.1 (CTAF) 0</b>	GND CON <b>121.8</b>
----------------------------	--	---	-------------------------



ELEV 904	TDZE 904
----------	----------

TWR 972

REIL Rwy 22 0

MIRL Rwy 4-22 0

FAF to MAP 5.4 NM

Knots	60	90	120	150	180
Min:Sec	5:24	3:36	2:42	2:10	1:48

CATEGORY	A	B	C	D
S-ILS 4		1104-½	200 (200-½)	
S-LOC 4	1360-½ 456 (500-½)		1360-⅞ 456 (500-⅞)	1360-1 456 (500-1)
CIRCLING	1360-1 456 (500-1)	1380-1 476 (500-1)	1380-1½ 476 (500-1½)	1500-2 596 (600-2)

EC-2, 22 FEB 2024 to 21 MAR 2024

EC-2, 22 FEB 2024 to 21 MAR 2024

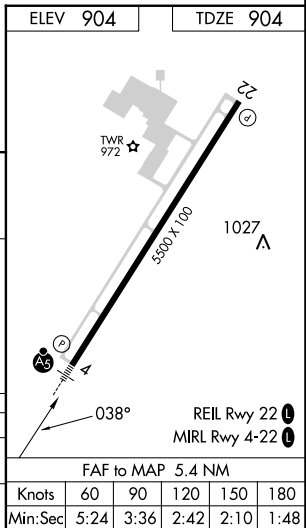
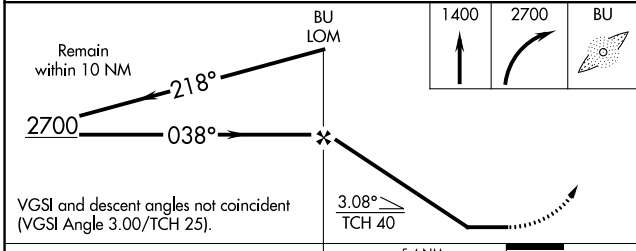
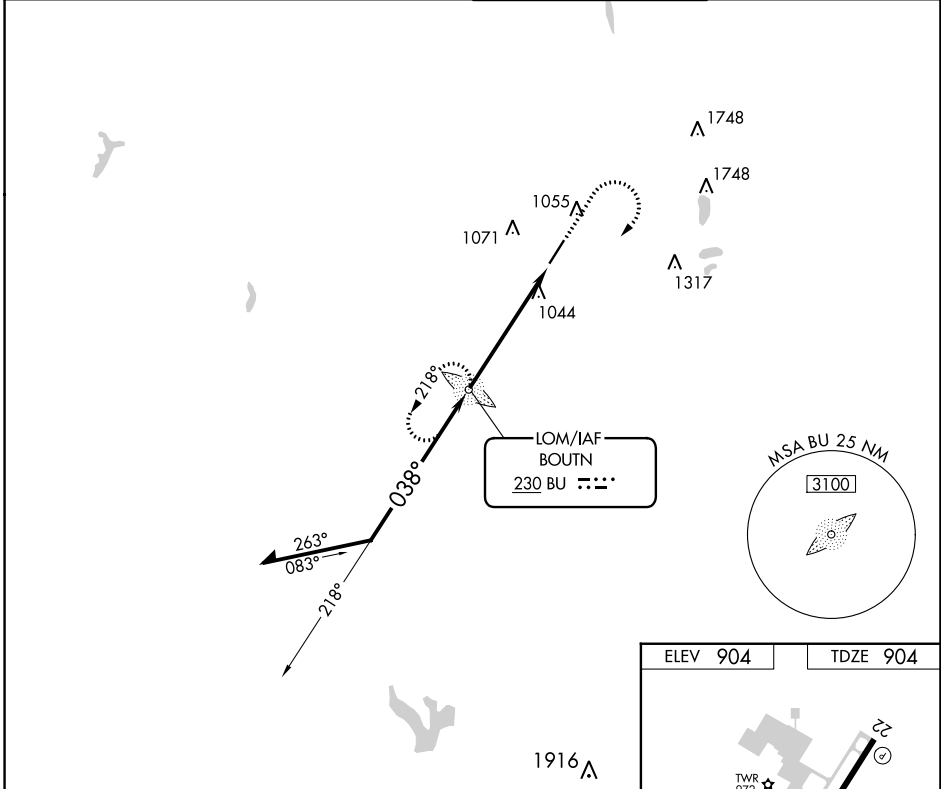
LOM BU <b>230</b>	APP CRS <b>038°</b>	Rwy Idg TDZE Apt Elev	<b>5500</b> <b>904</b> <b>904</b>
----------------------	------------------------	-----------------------------	---

# NDB RWY 4

BOLTON FLD (TZR)

RADAR required for procedure entry.		MALSR 	MISSED APPROACH: Climb to 1400 then climbing right turn to 2700 direct BU LOM and hold.
	For inop ALS, increase S-4 Cats A/B visibility to 1 SM and S-4 Cats C/D visibility to 1 1/2 SM.		

AWOS-3PT <b>135.925</b>	COLUMBUS APP CON <b>134.0 279.6</b>	BOLTON TOWER★ <b>128.1 (CTAF)</b>	GND CON <b>121.8</b>
----------------------------	--	--------------------------------------	-------------------------



CATEGORY	A	B	C	D
S-4	1400-3/4	496 (500-3/4)	1400-1 496 (500-1)	1400-1 1/4 496 (500-1 1/4)
CIRCLING	1400-1	496 (500-1)	1400-1 1/2 496 (500-1 1/2)	1500-2 596 (600-2)

EC-2, 22 FEB 2024 to 21 MAR 2024

EC-2, 22 FEB 2024 to 21 MAR 2024

WAAS CH <b>65641</b> <b>W22A</b>	APP CRS <b>217°</b>	Rwy Idg TDZE Apt Elev	<b>5500</b> <b>904</b> <b>904</b>
--	------------------------	-----------------------------	---

# RNAV (GPS) RWY 22

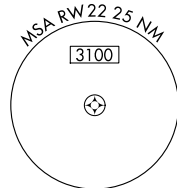
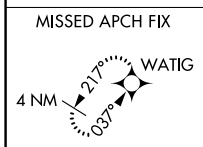
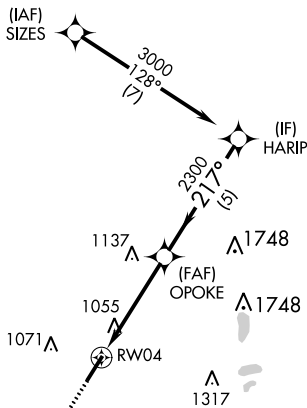
BOLTON FLD (TZR)

**⚠** For uncompensated Baro-VNAV systems, LNAV/VNAV NA below -16°C (4°F) or above 54°C (130°F). Baro-VNAV and VDP NA when using John Glenn Columbus Intl altimeter setting. DME/DME RNP-0.3 NA. When local altimeter setting not received use John Glenn Columbus Intl setting and increase LPV DA to 1196 feet and LNAV/VNAV DA to 1382 feet and all MDA 60 feet; increase LPV and LNAV/VNAV all Cats visibility 1/8 SM, and LNAV Cat C/D visibility 1/4 SM.

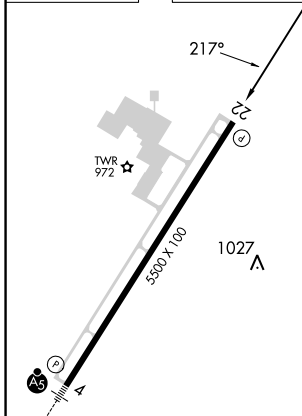
**MISSED APPROACH:**  
Climb to 2700 direct WATIG and hold.

AWOS-3PT <b>135.925</b>	COLUMBUS APP CON <b>134.0 279.6</b>	BOLTON TOWER ★ <b>128.1 (CTAF) 0</b>	GND CON <b>121.8</b>
----------------------------	--	---	-------------------------

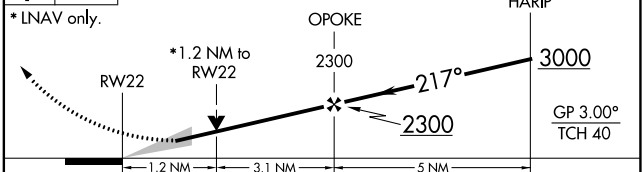
## RADAR REQUIRED



ELEV <b>904</b>	TDZE <b>904</b>
-----------------	-----------------



2700 WATIG VGS1 and RNAV glidepath not coincident (VGS1 Angle 3.00/TCH 25).



CATEGORY	A	B	C	D
LPV DA	1154-7/8 250 (300-7/8)			
LNAV/VNAV DA	1339-1/2 435 (500-1/2)			
LNAV MDA	1320-1	416 (500-1)	1320-1 1/8	416 (500-1 1/8)
<input checked="" type="checkbox"/> CIRCLING	1360-1 456 (500-1)	1380-1 476 (500-1)	1380-1 1/2 476 (500-1 1/2)	1500-2 596 (600-2)

REIL Rwy 22 **0**  
MIRL Rwy 4-22 **0**

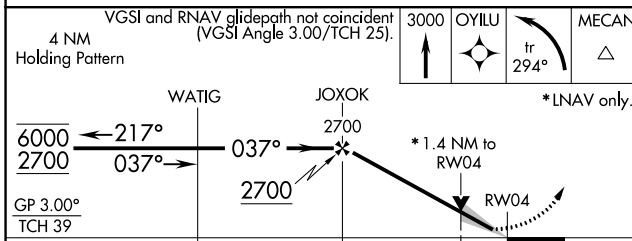
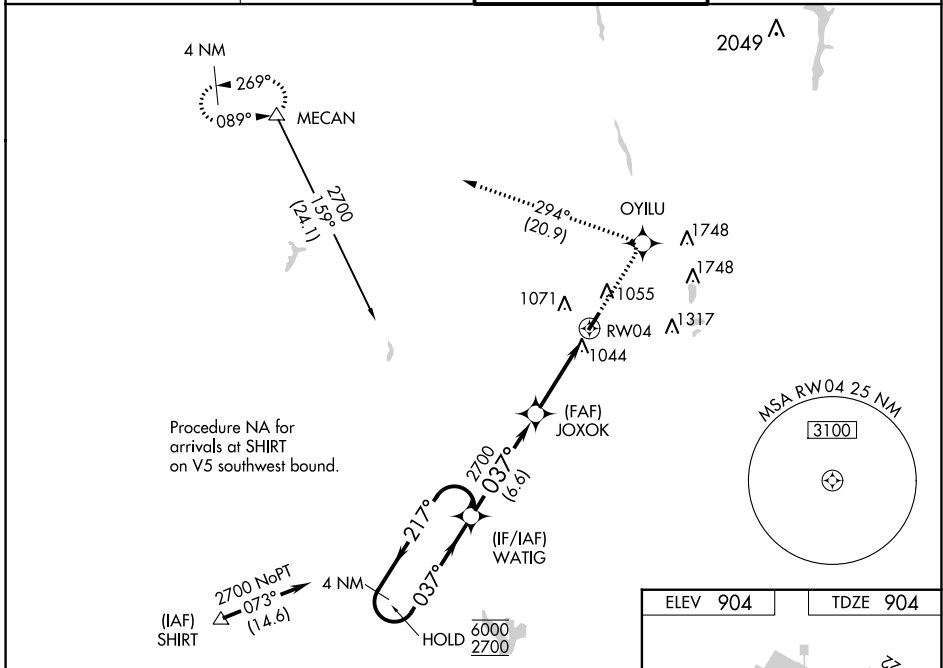
WAAS CH <b>90505</b> <b>W04A</b>	APP CRS <b>037°</b>	Rwy Idg TDZE Apt Elev	<b>5500</b> <b>904</b> <b>904</b>
--	------------------------	-----------------------------	---

# RNAV (GPS) RWY 4

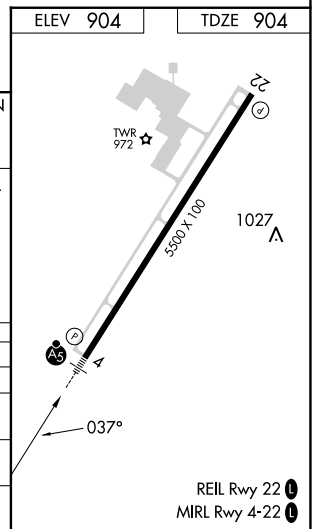
BOLTON FLD (TZR)

RNP APCH. ▼ For uncompensated Baro-VNAV systems, LNAV/VNAV NA below -16°C or above 54°C. For inop ALS, increase LNAV/VNAV all Cats visibility to 1 1/4 SM and LNAV Cats C/D visibility to 1 3/8 SM.	MALSR AS	MISSED APPROACH: Climb to 3000 direct OYILU and left turn on track 294° to MECAN and hold.
--	-------------	---

AWOS-3PT <b>135.925</b>	COLUMBUS APP CON <b>134.0 279.6</b>	BOLTON TOWER ★ <b>128.1 (CTAF) 0</b>	GND CON <b>121.8</b>
----------------------------	--	---	-------------------------



CATEGORY	A	B	C	D
LPV DA	1163-1/2 259 (300-1/2)			
LNAV/VNAV DA	1325-1 421 (500-1)			
LNAV MDA	1360-1/2	456 (500-1/2)	1360-7/8 456 (500-7/8)	1360-1 456 (500-1)
CIRCLING	1360-1 456 (500-1)	1380-1 476 (500-1)	1380-1 1/2 476 (500-1 1/2)	1500-2 596 (600-2)



EC-2, 22 FEB 2024 to 21 MAR 2024

EC-2, 22 FEB 2024 to 21 MAR 2024