

# ACCRA FIVE DEPARTURE (RNAV)

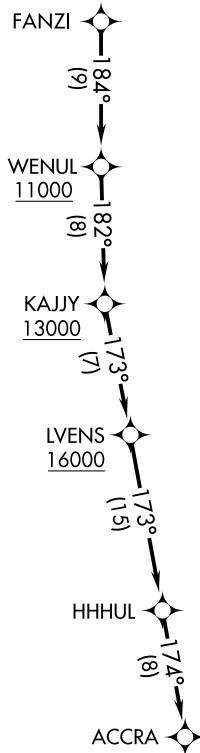
AL-5078 (FAA)

WAUKESHA COUNTY (UES)  
WAUKESHA, WISCONSIN

ATIS  
118.875  
CLNC DEL  
121.6  
MILWAUKEE CLNC DEL  
128.7 (when twr closed)  
GND CON  
121.6  
MILWAUKEE DEP CON  
125.35 307.0



**TOP ALTITUDE:  
ASSIGNED BY ATC**



### TAKEOFF MINIMUMS

Rwys 18, 28, 36: Standard.  
Rwy 10: 400-2½ or standard with minimum climb of 316' per NM to 1400.

- NOTE: RNAV 1.
- NOTE: GPS or DME/DME/IRU required.
- NOTE: RADAR required.
- NOTE: Turbojet aircraft maintain 250K until advised by ATC.
- NOTE: Advise ATC if unable to comply with crossing restrictions.

NOTE: Chart not to scale.

### DEPARTURE ROUTE DESCRIPTION

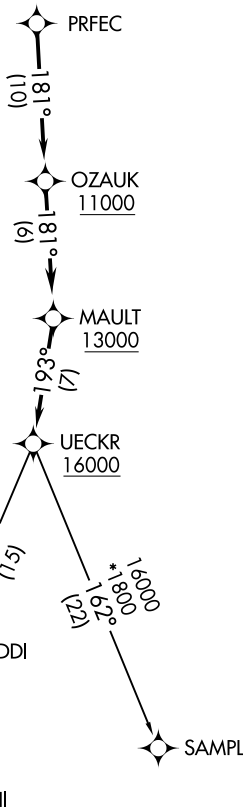
Climb on assigned heading for RADAR vectors to FANZI, thence....

....on track 184° to cross WENUL at or above 11000, then on track 182° to cross KAJJY at or above 13000, then on track 173° to cross LVENS at or above 16000, then on track 173° to HHHUL, then on track 174° to ACCRA. Maintain ATC assigned altitude, expect filed altitude ten minutes after departure.

ATIS  
 118.875  
 CLNC DEL  
 121.6  
 MILWAUKEE CLNC DEL  
 128.7 (when twr closed)  
 GND CON  
 121.6  
 MILWAUKEE DEP CON  
 125.35 307.0



**TOP ALTITUDE:  
ASSIGNED BY ATC**



### TAKEOFF MINIMUMS

Rws 18, 28, 36: Standard.  
 Rwy 10: 400-2½ or standard with minimum climb of 316' per NM to 1400.

- NOTE: RNAV 1.
- NOTE: GPS or DME/DME/IRU required.
- NOTE: RADAR required.
- NOTE: Turbojet aircraft maintain 250K until advised by ATC.
- NOTE: Notify ATC if unable to comply with crossing restrictions.

NOTE: Chart not to scale.

### DEPARTURE ROUTE DESCRIPTION

Climb on assigned heading for RADAR vectors to PRFEC, thence...

...on track 181° to cross OZAUK at or above 11000, then on track 181° to cross MAULT at or above 13000, then on track 193° to cross UECKR at or above 16000, then on (transition). Maintain ATC assigned altitude, expect filed altitude ten minutes after departure.

DELHI TRANSITION (UECKR6.DELHI)

SAMPL TRANSITION (UECKR6.SAMPL)