

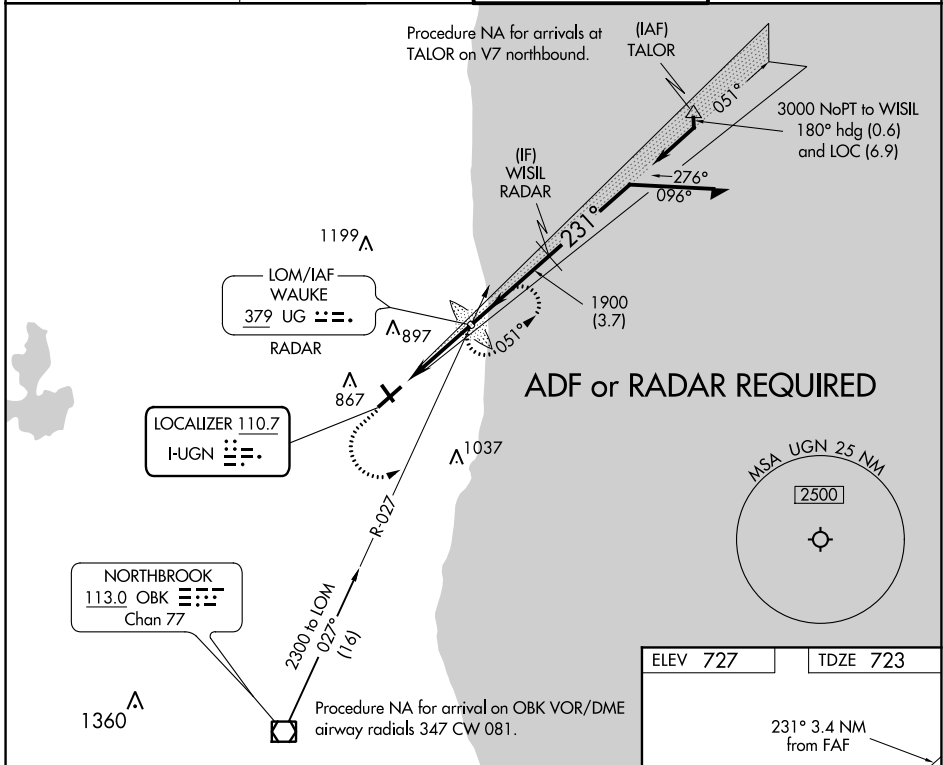
LOC I-UGN <b>110.7</b>	APP CRS <b>231°</b>	Rwy Idg TDZE Apt Elev <b>6001 723 727</b>
---------------------------	------------------------	--

# ILS or LOC RWY 23

WAUKEGAN NTL (UGN)

		MISSED APPROACH: Climb to 1600 then climbing left turn to 2300 to intercept OBK VOR/DME R-027 to WAUKE LOM/RADAR and hold.
--	--	--

ATIS <b>132.4</b>	CHICAGO APP CON <b>120.55</b>	WAUKEGAN TOWER ★ <b>120.05 (CTAF) 273.55</b>	GND CON <b>121.65</b>
----------------------	----------------------------------	---	--------------------------



1600	2300	OBK R-027	UG	WAUKE LOM/RADAR	Remain within 10 NM
------	------	-----------	----	-----------------	---------------------



CATEGORY	A	B	C	D
S-ILS 23		923-1/2	200 (200-1/2)	
S-LOC 23		1040-1/2	317 (400-1/2)	
CIRCLING	1220-1	493 (500-1)	1220-1 1/2 493 (500-1/2)	1400-2 1/4 673 (700-2 1/4)

ELEV 727	TDZE 723
----------	----------

231° 3.4 NM from FAF

051°

23

051°

0150 X 75

6001 X 150

0150 X 52

TWR

REIL Rwy 5

HIRL Rwy 5-23

MIRL Rwy 14-32

FAF to MAP 3.4 NM					
Knots	60	90	120	150	180
Min:Sec	3:24	2:16	1:42	1:21	1:08

EC-3, 02 DEC 2021 to 30 DEC 2021

EC-3, 02 DEC 2021 to 30 DEC 2021

WAAS CH <b>86211</b> <b>W23A</b>	APP CRS <b>232°</b>	Rwy Idg <b>6001</b> TDZE <b>723</b> Apt Elev <b>727</b>
--	------------------------	---

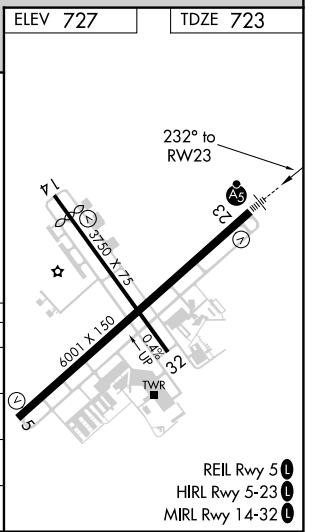
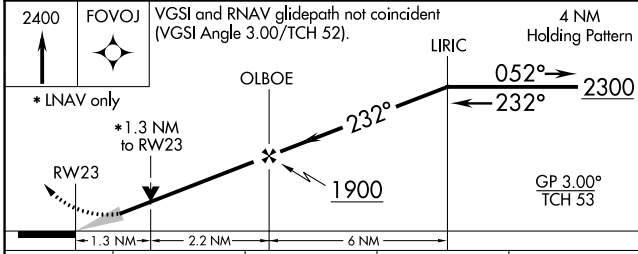
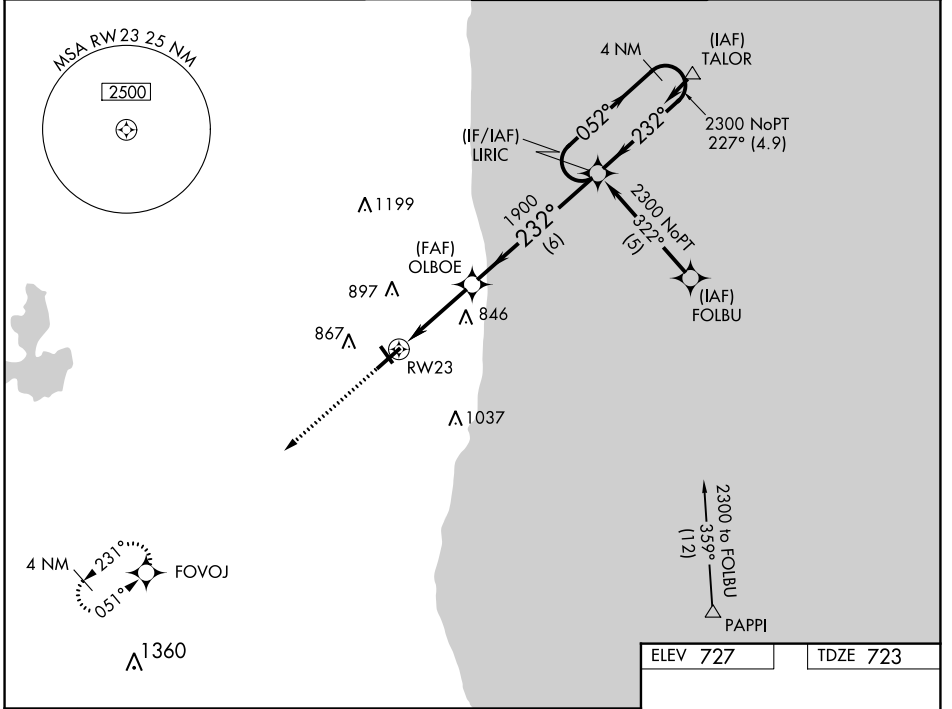
# RNAV (GPS) RWY 23

WAUKEGAN NTL (UGN)

**⚠** Circling to Rwy 14, 32 NA at night. For uncompensated Baro-VNAV systems, LNAV/VNAV NA below -16° C (4° F) or above 54°C (130°F). DME/DME RNP-0.3 NA. For inoperative ALS, increase LNAV/VNAV all Cats visibility to ½ SM.

**MALSR**  
**AS**  
MISSED APPROACH: Climb to 2400 direct FOVOJ and hold.

ATIS <b>132.4</b>	CHICAGO APP CON <b>120.55</b>	WAUKEGAN TOWER ★ <b>120.05 (CTAF) 0 273.55</b>	GND CON <b>121.65</b>
----------------------	----------------------------------	---	--------------------------



CATEGORY	A	B	C	D
LPV DA	980-½ 257 (300-½)			
LNAV/VNAV DA	1020-½ 297 (300-½)		1020-¾ 297 (300-¾)	
LNAV MDA	1160-½ 437 (500-½)	1160-¾ 437 (500-¾)	1160-1 437 (500-1)	1160-1 437 (500-1)
<b>C</b> CIRCLING	1220-1 493 (500-1)	1220-½ 493 (500-½)	1400-2¼ 673 (700-2¼)	1400-2¼ 673 (700-2¼)

EC-3, 02 DEC 2021 to 30 DEC 2021

EC-3, 02 DEC 2021 to 30 DEC 2021

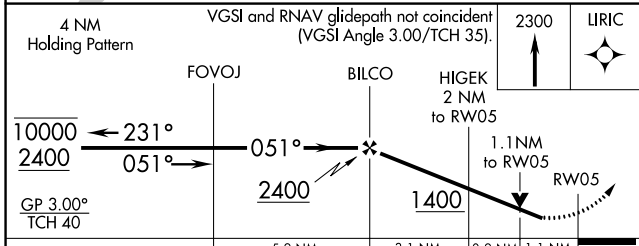
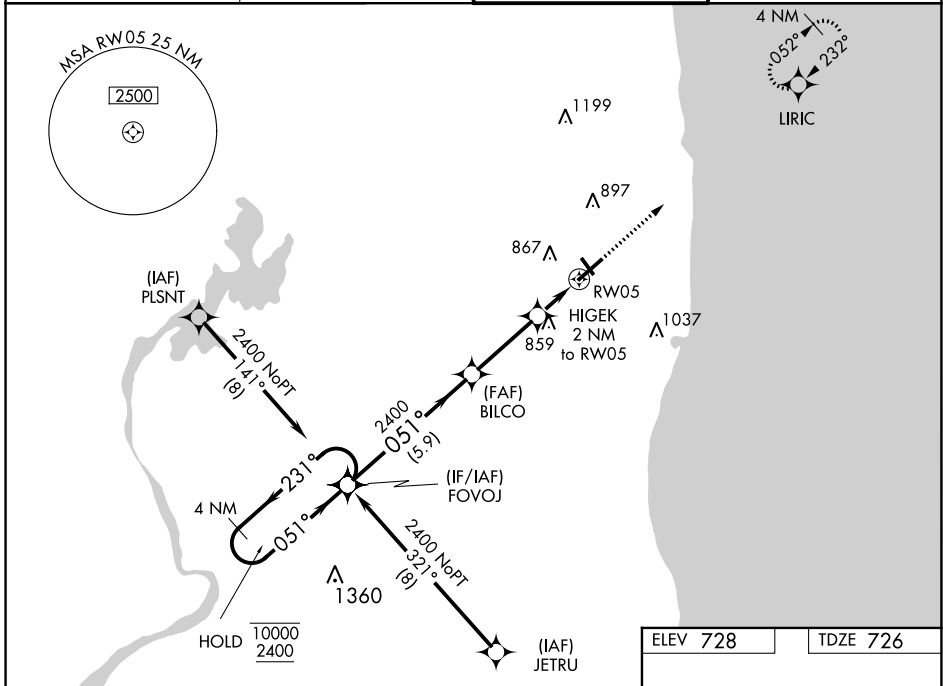
WAAS CH <b>81812</b> <b>W05A</b>	APP CRS <b>051°</b>	Rwy Idg <b>6001</b> TDZE <b>726</b> Apt Elev <b>728</b>
--	------------------------	---

# RNAV (GPS) RWY 5

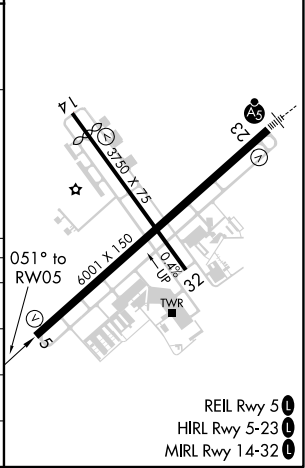
WAUKEGAN NTL (UGN)

RNP APCH - GPS.	MISSED APPROACH: Climb to 2300 direct LIRIC and hold.
<p>▼ Rwy 5 helicopter visibility reduction below 3/4 SM NA. For uncompensated Baro-VNAV systems, LNAV/VNAV NA below -16°C or above 54°C.</p> <p>▲ Circling Rwy 14, 32 NA at night.</p>	

ATIS <b>132.4</b>	CHICAGO APP CON <b>120.55</b>	WAUKEGAN TOWER ★ <b>120.05(CTAF) 273.55</b>	GND CON <b>121.65</b>
----------------------	----------------------------------	--	--------------------------



ELEV 728	TDZE 726
----------	----------



CATEGORY	A	B	C	D
LPV DA		976-3/4	250 (300-3/4)	
LNAV/VNAV DA		1013-7/8	287 (300-7/8)	
LNAV MDA	1120-1	394 (400-1)	1120-1 1/8	394 (400-1 1/8)
CIRCLING	1220-1	492 (500-1)	1220-1 1/2	1400-2 1/4 672 (700-2 1/4)

- REIL Rwy 5
- HIRL Rwy 5-23
- MIRL Rwy 14-32

EC-3, 02 DEC 2021 to 30 DEC 2021

EC-3, 02 DEC 2021 to 30 DEC 2021