

APP CRS	Rwy Idg	<b>2745</b>
<b>167°</b>	TDZE	<b>1165</b>
	Apt Elev	<b>1165</b>

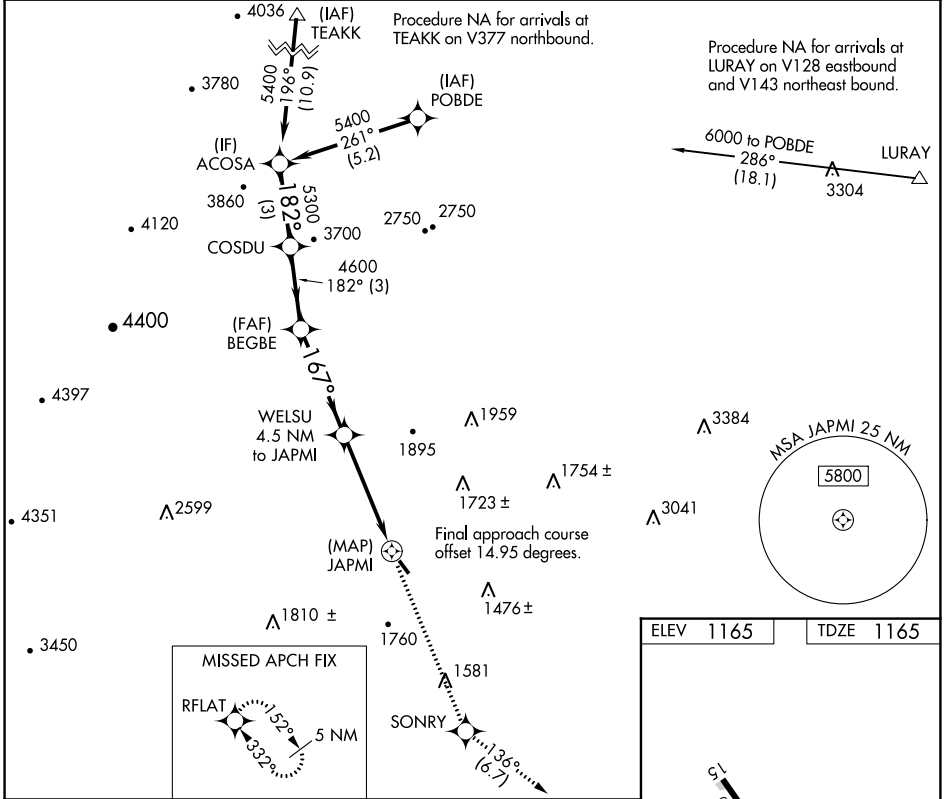
# RNAV (GPS) RWY 15

BRIDGEWATER AIR PARK (VBW)

**▽** DME/DME RNP-0.3 NA. Helicopter visibility reduction below 3/4 SM NA. When local altimeter setting not received, use Staunton/Waynesboro/Harrisonburg altimeter setting and increase all MDA 40 feet and visibility Cat B 1/4 mile.

**△** NA MISSED APPROACH: Climb to 5000 direct SONRY and on track 136° to RFLAT and hold, continue climb-in-hold to 5000.

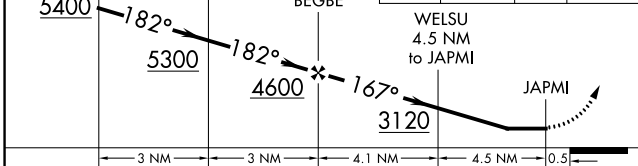
AWOS-3 <b>119.55</b>	POTOMAC APP CON <b>132.85 323.125</b>	UNICOM <b>122.7 (CTAF) 0</b>
-------------------------	--	---------------------------------



NE-3, 22 FEB 2024 to 21 MAR 2024

NE-3, 22 FEB 2024 to 21 MAR 2024

Visual Segment - Obstacles.	5000	SONRY	tr 136°	RFLAT
-----------------------------	------	-------	---------	-------



CATEGORY	A	B	C	D
LNVA MDA	2080-1 1/4	915 (1000-1 1/4)	NA	NA
CIRCLING	2080-1 1/4	915 (1000-1 1/4)	NA	NA

ELEV 1165	TDZE 1165
-----------	-----------

MIRL Rwy 15-33 0

APP CRS	Rwy Idg	<b>2377</b>
<b>332°</b>	TDZE	<b>1165</b>
	Apt Elev	<b>1165</b>

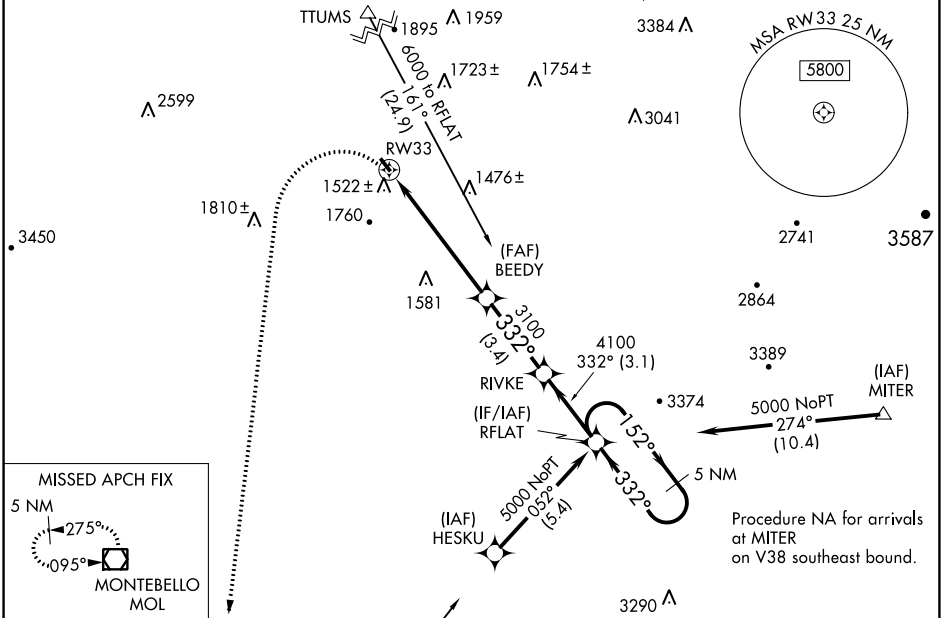
# RNAV (GPS) RWY 33

BRIDGEWATER AIR PARK (VBW)

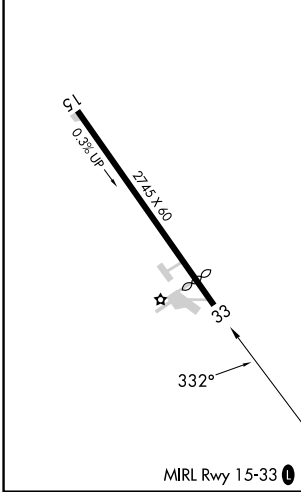
**NA** DME/DME RNP-0.3 NA. Helicopter visibility reduction below ¾ SM NA. When local altimeter setting not received, use Staunton/Waynesboro/Harrisonburg altimeter setting and increase all MDA 40 feet.

MISSED APPROACH: Climbing left turn to 6000 direct MOL VOR/DME and hold.

AWOS-3 <b>119.55</b>	POTOMAC APP CON <b>132.85 323.125</b>	UNICOM <b>122.7 (CTAF) 0</b>
-------------------------	--	---------------------------------



ELEV 1165	TDZE 1165
-----------	-----------



6000	MOL	RFLAT		5 NM Holding Pattern
RW33		BEEDY	RIVKE	5000
3.05° TCH 40		3100	4100	152° → ← 332°
5.9 NM		3.4 NM	3.1 NM	
CATEGORY	A	B	C	D
LNAV MDA	1780-1	615 (700-1)	NA	
CIRCLING	1860-1 695 (700-1)	2020-1¼ 855 (900-1¼)	NA	

NE-3, 22 FEB 2024 to 21 MAR 2024

NE-3, 22 FEB 2024 to 21 MAR 2024