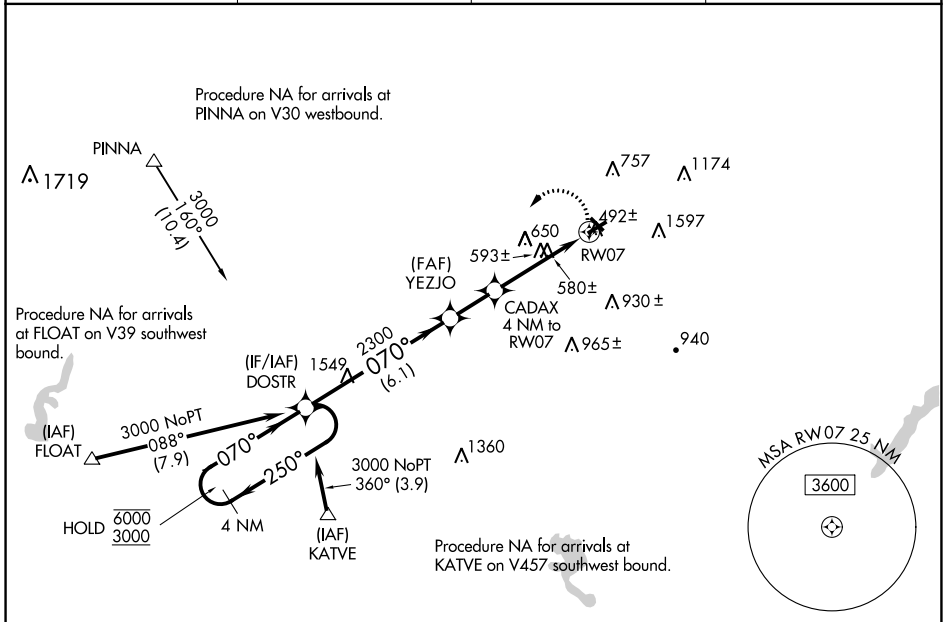


| | | |
|--|------------------------|---|
| WAAS CH 61224 W07A | APP CRS 070° | Rwy Idg TDZE 390 Apt Elev 399 |
|--|------------------------|---|

RNAV (GPS) RWY 7

ALLENTOWN QUEEN CITY MUNI (XLL)

| | | | |
|---|---|--|---------------------------------|
| RNP APCH. | | MISSED APPROACH: Climbing left turn to 3000 direct DOSTR and hold. | |
| <p>▼ Circling NA south of Rwy 7 and 25. ▲ Rwy 7 helicopter visibility reduction below 3/4 SM NA. Circling Rwy 15 NA at night.</p> | | | |
| AWOS-3 127.875 | ALLENTOWN APP CON 119.65 124.45 351.8 | CLNC DEL 118.9 | UNICOM 122.7 (CTAF) 0 |



NE-4, 22 FEB 2024 to 21 MAR 2024

NE-4, 22 FEB 2024 to 21 MAR 2024

| | | | |
|---|-----------------------|---|--------------------------------|
| ELEV 399 | | TDZE 390 | |
| 4 NM Holding Pattern | | Visual Segment - Obstacles. | |
| <p>6000 ← 250°</p> <p>3000 → 070°</p> <p>DOSTR</p> <p>YEZJO</p> <p>CADAX 4 NM to RWY 7</p> <p>RWY 7</p> <p>2300</p> <p>1700</p> <p>6.1 NM 1.9 NM 4 NM</p> | | <p>3000</p> <p>DOSTR</p> <p>070° to RWY 7</p> | |
| CATEGORY | A | B | D |
| LP MDA | 940-1 | 550 (600-1) | NA |
| LNAV MDA | 1060-1 | 670 (700-1) | NA |
| CIRCLING | 1060-1 661 (700-1) | 1120-1 721 (800-1) | 1300-2 3/4 901 (1000-2 3/4) |

