

| | | |
|--|------------------------|---|
| WAAS CH 97602 W31A | APP CRS 315° | Rwy Idg 5900 TDZE 73 Apt Elev 76 |
|--|------------------------|---|

RNAV (GPS) RWY 31

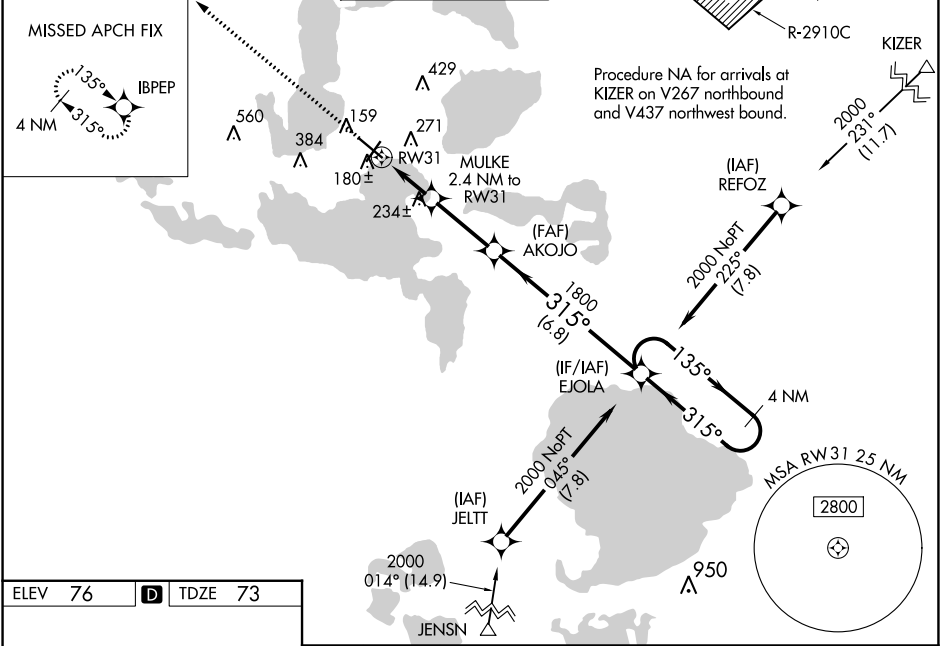
LEESBURG INTL (L.E.E)

RNP APCH-GPS.

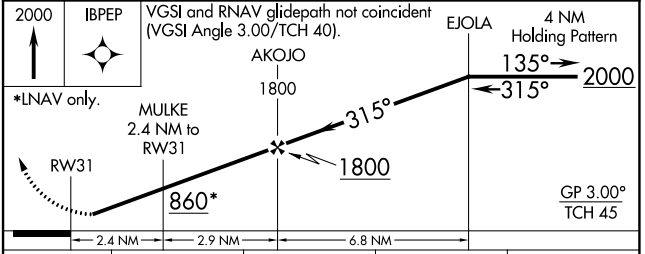
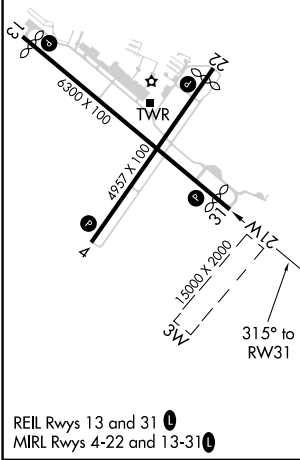
⚠ Baro-VNAV NA when using Orlando Intl altimeter setting. For uncompensated Baro-VNAV systems, LNAV/VNAV NA below -15°C or above 43°C. Rwy 31 helicopter visibility reduction below 1 SM NA. When local altimeter setting not received, use Orlando Intl altimeter setting: increase LPV DA to 408 feet, LNAV/VNAV DA to 442 feet, and all visibilities ¼ SM; increase all MDAs 100 feet and visibility Cats C and D ¼ SM. Straight-in Rwy 31 NA at night, Circling Rwy 4, 22, 31 NA at night.

MISSED APPROACH:
Climb to 2000 direct IBPEP and hold.

| | | | | | |
|------------------------|---------------------------------------|--|---------------------------|---|--------------------------|
| ATIS 134.325 | ORLANDO APP CON 135.3 351.9 | LEESBURG TOWER ★ 119.35 (CTAF) 0 | GND CON 121.725 | CLNC DEL 120.225 (When twr closed) | UNICOM 122.725 |
|------------------------|---------------------------------------|--|---------------------------|---|--------------------------|



| | | |
|---------|----------|---------|
| ELEV 76 | D | TDZE 73 |
|---------|----------|---------|



| CATEGORY | A | B | C | D |
|--------------|-------|-------------|----------------------|------------------------|
| LPV DA | | 323-1 | 250 (300-1) | |
| LNAV/VNAV DA | | 357-1 | 284 (300-1) | |
| LNAV MDA | 500-1 | 427 (500-1) | 500-1¼ | 427 (500-1¼) |
| CIRCLING | 700-1 | 624 (700-1) | 780-2 704 (800-2) | 780-2¼ 704 (800-2¼) |