

WAAS CH 58001 W14A	APP CRS 141°	Rwy Idg 10302 TDZE 4091 Apt Elev 4095
----------------------------------------	------------------------	------------------------------------------------------------------

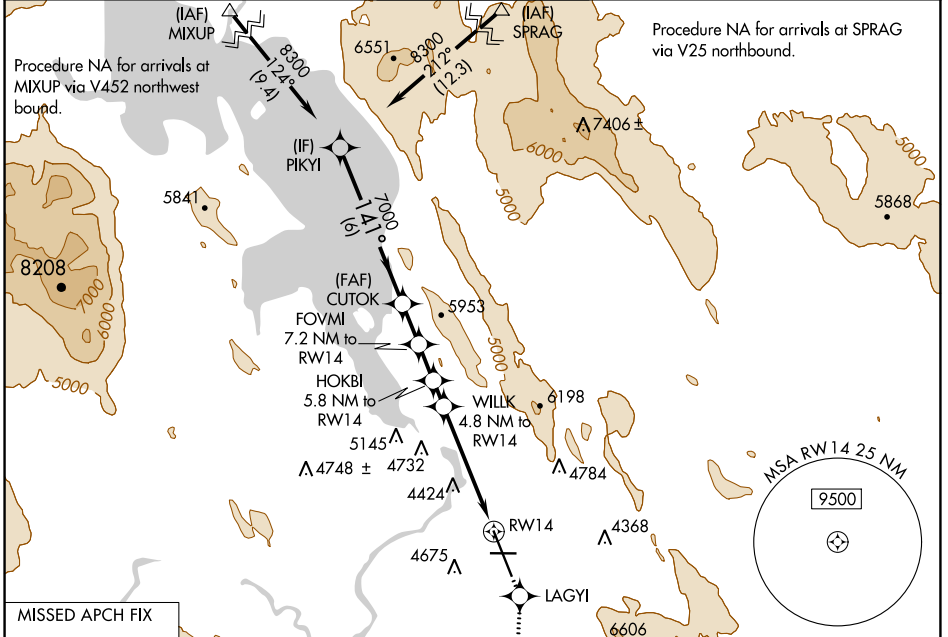
RNAV (GPS) RWY 14

CRATER LAKE/KLAMATH RGNL (L.M.T)

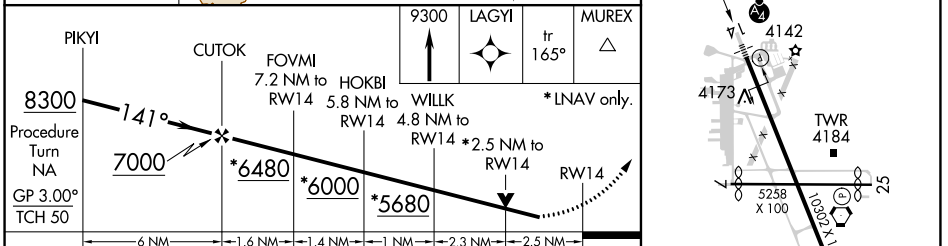
⚠ Inop table does not apply to LPV all Cats, and LNAV Cats B and C. DME/DME RNP-0.3 NA. Helicopter visibility reduction below ¼ SM NA. Circling NA for Cat D east of Rwy 14-32.

MALSF  MISSED APPROACH: Climb to 9300 direct LAGYI and via track 165° to MUREX and hold, continue climb-in-hold to 9300.

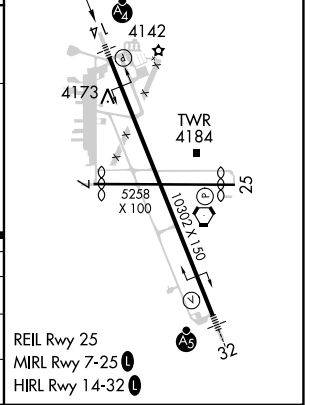
ATIS 126.5 263.0	KINGSLEY APP CON 123.675 270.8	KINGSLEY TOWER* 133.975 (CTAF) 257.8	GND CON 121.9 348.6	UNICOM 122.95
----------------------------	------------------------------------------	------------------------------------------------	-------------------------------	-------------------------



MISSED APCH FIX	ELEV 4095	TDZE 4091
-----------------	-----------	-----------



CATEGORY	A	B	C	D
LPV DA	4635-2 544 (600-2)			
LNAV MDA	4920-3/4 829 (900-3/4)	4920-1 1/4 829 (900-1 1/4)	4920-2 1/2 829 (900-2 1/2)	4920-2 3/4 829 (900-2 3/4)
CIRCLING	4920-1 825 (900-1)	4980-1 1/4 885 (900-1 1/4)	5420-3 1325 (1400-3)	5660-3 1565 (1600-3)



NW-1, 22 FEB 2024 to 21 MAR 2024

NW-1, 22 FEB 2024 to 21 MAR 2024