

RNAV (GPS) RWY 27

APCH CRS	Rwy ldg	4800
258°	THRE	14
	Arpt Elev	14

[USAF]

CAPE LISBURNE LRRS (PALU)

RNP APCH - GFS	MISSED APPROACH: (Do not exceed 220 KIAS until turn completion). Climbing right turn to 3200 direct TAKME and hold.
----------------	--

ANCHORAGE CENTER/DEP CON 119.65 363.25	KOTZEBUE RADIO 122.3	CTAF 126.2 0
---	-------------------------	------------------------

**MILITARY CERTIFIED
AIRCREWS OR AUTHORIZED
CONTRACT AIRCRAFT
ONLY**

NOT FOR CIVIL USE

Helo vis reduction below 1 SM not authorized.

Uncontrolled Airspace below 700' AGL within 7 NM of Cape Lisburne airport.

Unlit weather equipment, 168' MSL, 278' from thld, 19' right of course.

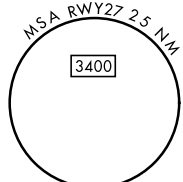
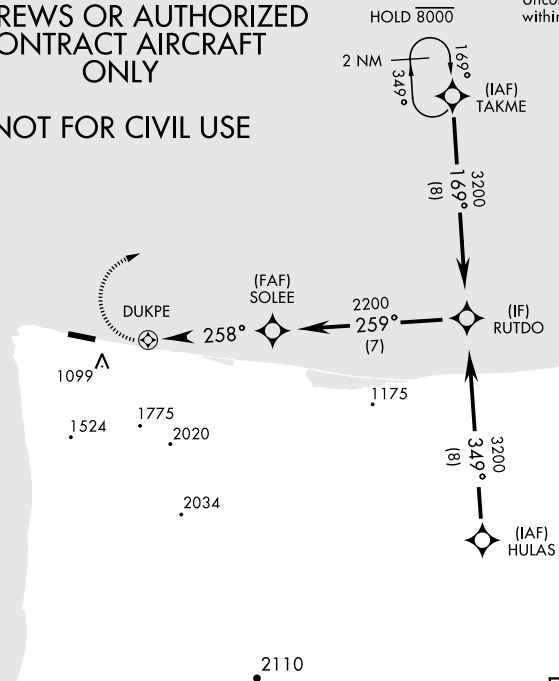
Terrain 630' MSL, 1.88 NM from thld, 1159' left of course.

Terrain 31' MSL, 200' from thld, 200' left of course.

Terrain 30' MSL, 244' from thld, 172' left of course.

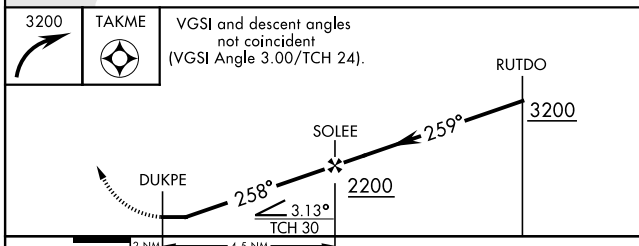
Terrain 597' MSL, 1.91 NM from thld, 1118' left of course.

AK, 25 JAN 2024 to 21 MAR 2024



AK, 25 JAN 2024 to 21 MAR 2024

EMERG SAFE ALT 100 NM 6700



ELEV 14	THRE 14
---------	---------

HIRL Rwy 9-27 **0**
REIL Rwy 9 and 27
TDZL Rwy 9 and 27 **0**

CATEGORY	A	B	C	D
LNAV MDA	1320-2½ 1306 (1400-2½)		1320-3 1306 (1400-3)	NOT AUTHORIZED
C CIRCLING *	1320-2½ 1306 (1400-2½)		1320-3 1306 (1400-3)	NOT AUTHORIZED

RNAV (GPS) RWY 27