

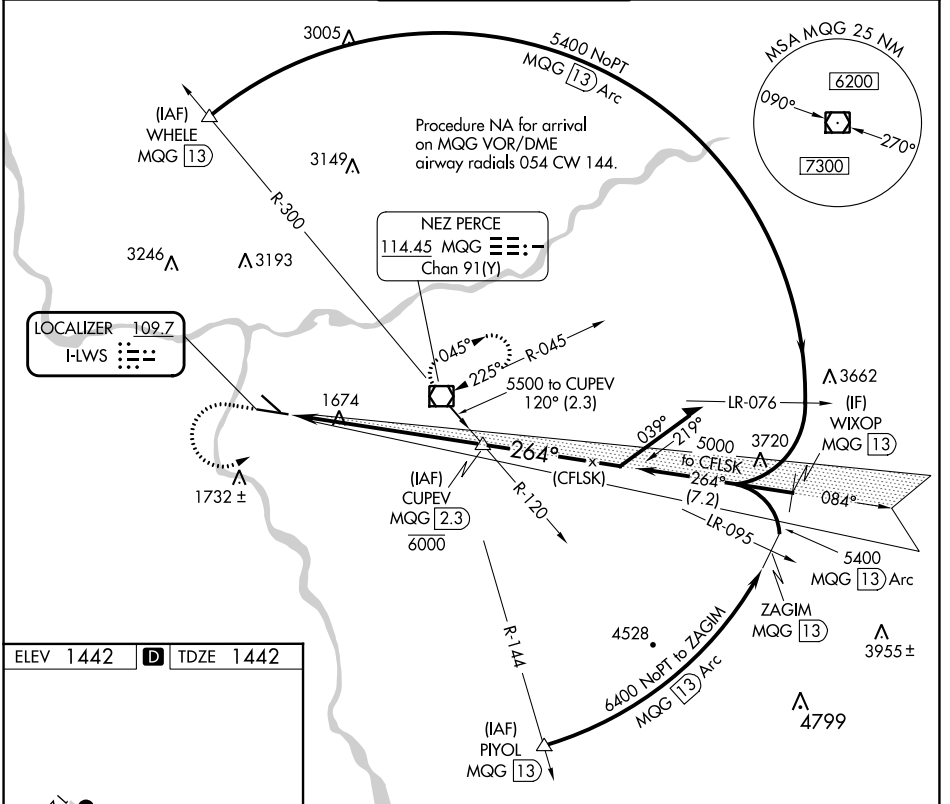
LOC I-LWS <b>109.7</b>	APP CRS <b>264°</b>	Rwy Idg TDZE Apt Elev	<b>6511</b> <b>1442</b> <b>1442</b>
---------------------------	------------------------	-----------------------------	---

# ILS RWY 26

LEWISTON/NEZ PERCE COUNTY (LWS)

<b>▽</b> <b>▲</b>	When local altimeter setting not received, procedure NA. Autopilot coupled approach NA below 2500.	MALSR 	MISSED APPROACH: Climb to 3000 then climbing left turn to 5300 direct MQG VOR/DME and hold, continue climb-in-hold to 5300.
----------------------	--	-----------	---

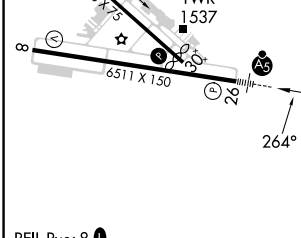
ASOS <b>135.575</b>	SEATTLE CENTER <b>123.95 290.55</b>	LEWISTON TOWER ★ <b>119.4 (CTAF) 0 318.8</b>	GND CON <b>121.9</b>	UNICOM <b>122.95</b>
------------------------	--	---	-------------------------	-------------------------



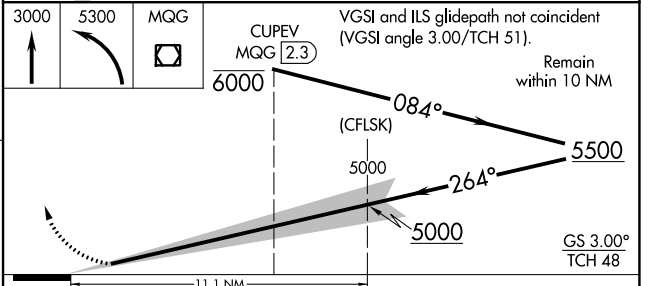
NW-1, 22 FEB 2024 to 21 MAR 2024

NW-1, 22 FEB 2024 to 21 MAR 2024

ELEV 1442	<b>D</b>	TDZE 1442
-----------	----------	-----------



- REIL Rwy 8
- REIL RWY 12
- HIRL Rwy 8-26
- MIRL Rwy 12-30



CATEGORY	A	B	C	D
S-ILS 26	1642-½ 200 (200-½)			

# ILS RWY 26